

# BENCHMARK<sup>TM</sup><sub>MC</sub>

## 40V MAX<sup>†</sup> 13" SNOW SHOVEL



Item # 5554-516

LIMITED  
**5** YEAR\*  
WARRANTY

Includes 2 batteries & 1 charger  
5 Year Limited Warranty on tool  
3 Year Limited Warranty on battery and charger

**SGS**  
C US  
ASYSN02

**READ ALL INSTRUCTIONS BEFORE FIRST USE.  
KEEP THIS MANUAL FOR FUTURE REFERENCE.  
KEEP AWAY FROM CHILDREN.  
SEE NEXT PAGE FOR CRITICAL TOOL RELATED  
PRECAUTIONS.**

<sup>†</sup> Uses two 20v Max lithium-ion batteries that deliver an initial battery voltage (measured without a workload) of 40 volts. Nominal voltage is 36V.



**WEAR CSA APPROVED  
EYE PROTECTION**



**WEAR EAR  
PROTECTION**



**WEAR A  
FACE MASK**

## PRODUCT SPECIFICATIONS

### 40V MAX<sup>i</sup> 13" SNOW SHOVEL

No Load Speed	1900 RPM
Max Clearing Width	13.2" (33.5 cm)
Max Clearing Depth	8" (20 cm)
Max Throw Distance	Up to 26.5ft (8m)
Tool Operational Weight	16.95 LBS (7.69 KG)

### BATTERY AND CHARGER

Battery Voltage	20V 5.0Ah Li-ion (Maximum charged battery voltage, measured without load, is 20V with a nominal value of 18V)
Charge Time	Up to 160 minutes

### REPLACEMENT PARTS AVAILABLE AT HOME HARDWARE

Replacement Battery	HH #5350-012 (5Ah) HH #5350-049 (8Ah)
Replacement Charger	5350-024 dual 2.4A charger (charge 2.0Ah to 5.0Ah) 5350-048 dual 4A charger (charge 2.0Ah to 8.0Ah) 5350-022 6A fast charger (charge 2.0Ah to 8.0Ah)

### CRITICAL TOOL RELATED PRECAUTIONS

Batteries must be fully charged before first use and must be charged/stored indoors in a cool dry environment. Exposure to temperature extremes will reduce battery performance and lifespan.

**READ ALL SAFETY, WARNING, PRECAUTIONS AND MAINTENANCE INFORMATION PROVIDED IN THIS MANUAL.**

### NEED ASSISTANCE?

Call us on our toll-free customer support line:  
1-866-349-8665 (Monday through Friday 9am – 5pm Eastern Standard Time)


- Technical questions
- Replacement parts
- Parts missing from package

## TABLE OF CONTENTS

Product Specifications .....	1
Table Of Contents .....	2
General Safety Warnings .....	3-5
Snow shovel specific safety rules .....	5-6
Battery & Charger Safety .....	7-9
Battery Pack Recycling .....	9
Symbols .....	10
Know Your Snow Shovel .....	11
Checking the Battery Charge Status .....	12
Assembly And Operating .....	12-16
Maintenance .....	17
Exploded View .....	18-19
Parts List .....	20-22
Warranty .....	22

## GENERAL SAFETY WARNINGS

### ALL OPERATORS MUST READ THESE INSTRUCTIONS BEFORE USE

 **WARNING:** Before using this tool or any of its accessories, read this manual and follow all Safety Rules and Operating Instructions. The important precautions, safeguards and instructions appearing in this manual are not meant to cover all possible situations. It must be understood that common sense and caution are factors which cannot be built into the product.


**Notice the personal safety alert symbol  used in this manual to draw your attention to a WARNING given along with the particular operating instruction. This means that the operation requires special ATTENTION, CAUTION and AWARENESS.**

 **WEAR CSA APPROVED EYE PROTECTION**


 **WEAR A FACE MASK**

 **WEAR EAR PROTECTION**

ALWAYS WEAR EYE PROTECTION THAT CONFORMS WITH CSA REQUIREMENTS or ANSI SAFETY STANDARD Z87.1 FLYING DEBRIS can cause permanent eye damage. Prescription eyeglasses ARE NOT a replacement for proper eye protection.


 **WARNING:** Non-compliant eyewear can cause serious injury if broken during the operation of a power tool.

### ALWAYS WEAR EAR PROTECTION

 **WARNING:** Use hearing protection, particularly during extended periods of operation of the tool, or if the operation is noisy.

### ELECTRICAL SAFETY

 **WARNING:** Use proper circuit protection.

 **WARNING:** Ventilation openings in batteries and chargers must always be open to allow cooling air to circulate freely air vents that are blocked, restricted or covered may result in the battery or charger overheating. Overheating may lead to damage to the tool or cause a fire, resulting in possible serious injury.

### WORK AREA SAFETY

**Keep work area clean and well lit.** Cluttered or dark areas invite accidents.

**Do not operate snow shovel in explosive atmospheres, such as in the presence of flammable liquids, gases, or dust.** Power tools create sparks which may ignite the dust or fumes.

**Keep children and bystanders away while operating a power tool.** Distractions can cause you to lose control.

**Snow shovel charger plug must match the outlet.** Never modify the plug in any way Do not use any adapter plugs with earthed (grounded) battery charger. Unmodified plugs and matching outlets will reduce risk of electric shock.

**Avoid body contact with earthed or grounded surfaces such as pipes, radiators, ranges and refrigerators,** There is an increased risk of electric shock if your body is earthed or grounded.

**Do not expose the 13" snow shovel to rain or wet locations.** Water entering a snow shovel will increase the risk of electric shock.

**Do not abuse the cord. Never use the cord for carrying, pulling or unplugging the 13" snow shovel charger. Keep cord away from heat, oil, sharp edges or moving parts.** Damaged or entangled cords increase the risk of electric shock.

**When operating a charger outdoors, use an extension cord suitable for outdoor use.** Use of a cord suitable for outdoor use reduces the risk of electric shock.

**If operating a power tool in a damp location is unavoidable, use a residual current device (RCD) protected supply.** Use of a ground fault circuit interrupter (GFCI) reduces the risk of electric shock.

### PERSONAL SAFETY

**Stay alert, watch what you are doing and use common sense when operating a snow shovel. Do not use a snow shovel while you are tired or under the influence of drugs, alcohol or medication.** A moment of inattention while operating the snow shovel may result in serious personal injury.

**Use personal protective equipment. Always wear eye protection.** Protective equipment such as: dust mask, non-skid safety shoes, hard hat, or hearing protection used for appropriate conditions will reduce personal injuries.

**Prevent unintentional starting. Ensure the switch is in the off-position before connecting to power source and/or battery pack, picking up or carrying the tool.** Carrying power tools with your finger on the switch or energizing power tools that have the switch on invites accidents.

**Remove any adjusting key or wrench before turning the power tool on. A wrench or a key left attached to a rotating part of the 13" snow shovel may result in personal injury.**

**Do not overreach. Keep proper footing and balance at all times.** This enables better control of the 13" snow shovel in unexpected situations.

**Dress properly. Do not wear loose clothing or jewellery. Keep your hair, clothing and gloves away from moving parts.** Loose clothes, jewellery or long hair can be caught in moving parts.

If devices are provided for the connection of dust extraction and collection facilities, ensure these are connected and properly used.

### POWER TOOL USE AND CARE

**Do not force the power tool. Use the correct power tool for your application.** The correct power tool will do the job better and safer at the rate for which it was designed.

**Do not use the power tool if the switch does not turn it on and off.** Any power tool that cannot be controlled with the switch is dangerous and must be repaired.

**Disconnect the plug from the power source and/or the battery pack from the power tool before making any adjustments, changing accessories, or storing power tools.** Such preventive safety measures reduce the risk of starting the power tool accidentally.

**Store idle power tools out of the reach of children and do not allow persons unfamiliar with the power tool or these instructions to operate the power tool.** Power tools are dangerous in the hands of untrained users.

**Maintain power tools. Check for misalignment or binding of moving parts, breakage of parts and any other condition that may affect the power tool's operation.** If damaged, have the power tool repaired before use. Many accidents are caused by poorly maintained power tools.

Keep cutting tools sharp and clean. Properly maintained cutting tools with sharp cutting edges are less likely to bind and are easier to control.

**Use the power tool, accessories and tool bits etc. in accordance with these instructions, taking into account the working conditions and the work to be performed.** Use of the power tool for operations different from those intended could result in a hazardous situation.

**Use auxiliary handles supplied with the tool.** Loss of control can cause personal injury.

## SERVICE

Have your power tool serviced by a qualified repair person using only identical replacement parts. This will ensure that the safety of the power tool is maintained.

## SNOW SHOVEL SPECIFIC SAFETY RULES

**⚠ WARNING:** Read, understand and follow all instructions on the machine and in the manual before operating this unit. Thoroughly familiarize yourself with the controls and the proper use of the equipment. Know how to stop the unit and disengage the controls quickly.

- Children should never be allowed access to the equipment. Adults should never operate the equipment without carefully reading and understanding these instructions.
- Keep the area of operation clear of all persons, particularly small children and pets.
- Exercise caution to avoid slipping or falling.
- Thoroughly inspect the area where the equipment is to be used and remove all doormats, sleds, boards, wires and other foreign objects.
- Do not operate the equipment without wearing adequate winter garments. Avoid loose fitting articles of clothing that can become caught in moving parts. Wear footwear that will improve footing on slippery surfaces.
- Do not attempt to clear snow from a gravel or crushed rock surface. This product is intended for use only on paved surfaces.
- Never attempt to make any adjustments while the motor is running (except when specifically recommended by the manufacturer).

- Always wear safety glasses or eye shields during operation or while performing an adjustment or repair to protect your eyes from foreign objects that may be thrown from the machine.
- Do not put hands or feet near or under rotating parts. Keep clear of the discharge opening at all times.
- Exercise extreme caution when operating on or crossing gravel drives, walks or roads. Stay alert for hidden hazards or traffic.
- After striking a foreign object, stop the motor. Thoroughly inspect the cordless snow shovel for any damage, and repair the damage before restarting and operating the cordless snow shovel.
- If the unit should start to vibrate abnormally, stop the motor and check the unit immediately to ascertain the cause vibration is generally a sign of trouble.
- Stop the motor and remove the battery whenever you leave the operating position, when transporting the unit, before unclogging the rotor blade housing and when making any repairs, adjustments or inspections to the unit.
- When cleaning, repairing or inspecting the cordless snow shovel, make sure that all moving parts have come to a complete stop before beginning work.
- Exercise extreme caution when operating on slopes.
- Never operate the cordless snow shovel without proper guards and other safety devices in place and in proper working order.
- Never direct the discharge toward people or areas where property damage can occur. Keep children, pets and other bystanders away from the work area.
- Do not overload the machine capacity by attempting to clear snow at too fast a rate.
- Look behind and use care when backing up with the cordless snow shovel.
- Never operate the cordless snow shovel without good visibility or light. Always be sure of your footing, and keep a firm hold on the handles. Walk, never run, with the unit.

**⚠ WARNING:** Hand contact with the rotating auger inside the motor housing is the most common cause of injury associated with cordless snow shovels. Never use your hands to clear a clogged motor housing.

#### **To clear the rotor housing:**

- Shut the motor off and remove the batteries.
- Wait 10 seconds to be sure the auger has come to a complete stop
- Always use a clean-out tool, not your hands, to free the rotating auger.

#### **MAINTENANCE AND STORAGE**

Check all fasteners at frequent intervals for proper tightness to ensure that the equipment is in safe working condition.


Always refer to the operator's manual for important details, such as how to properly store your cordless snow shovel for an extended period of time.

Maintain or replace safety and instruction labels as needed.

Run the machine a few minutes after throwing snow to prevent the auger from freezing.

## BATTERY PACK & CHARGER SAFETY

### BATTERY SAFETY INSTRUCTIONS

 **WARNING:** Only use the charger supplied with this kit to charge the 20V Li-ion batteries for this tool. Charging any other batteries may damage the charger and possibly cause serious injury.

1. Recharge only with the charger specified by the manufacturer. A charger that is suitable for one type of battery pack may create a risk of fire when used with another battery pack. Incorrect use may result in electric shock, overheating or leakage of corrosive liquid from the battery.
2. Use the snow shovel only with specifically designated battery packs. Use of any other battery packs may create a risk of injury and fire.
3. Be aware of possible hazards when not using your battery tool or when changing accessories. To reduce risk, remove the battery packs from the machine while not in operation. This will reduce the risk of electric shock, fire or serious personal injury.
4. Do not place appliances or their batteries near fire or heat. Continuous intense sunlight, fire or other heat sources may cause an increased danger of explosion.
5. Do not crush, drop or damage the battery pack. Do not use a battery pack or charger that has been dropped or received a sharp blow. A damaged battery is subject to explosion. Properly dispose of a dropped or damaged battery immediately.
6. Batteries can explode in the presence of a source of ignition, such as a pilot light. To reduce the risk of serious personal injury, never use any cordless product in the presence of an open flame. An exploded battery can propel debris and chemicals. If exposed, flush with water immediately.
7. Do not charge battery in a damp or wet location. Following this rule will reduce the risk of electric shock.
8. Longer life and better performance can be obtained if the battery pack is charged when the air temperature is between 75°F / 24°C and 64°F / 18°C. Do not charge the battery pack in air temperature below 41°F / 5°C or above 105°F / 40.5°C. This is important as it can prevent serious damage to the battery pack.
9. Under extreme usage or temperature conditions, battery leakage may occur. If liquid comes in contact with your skin, wash immediately with soap and water. If liquid gets into your eyes, flush them with clean water for at least 10 minutes, then seek immediate medical attention.
10. When battery pack is not in use, keep it away from other metal objects like: paper clips, coins, keys, nails, screws, or other small metal objects that can make a connection from one terminal to another. Shorting the battery terminals together may cause sparks, burns, or a fire.

11. Do not disassemble the battery and avoid mechanical damage to the battery. Risk of short circuit and fumes may be emitted. Ensure fresh air and seek medical assistance in the event of discomfort.
12. Always remove battery pack from your tool when you are assembling parts, making adjustments, cleaning, or when not in use. Removing the battery pack will prevent accidental starting that could cause serious personal injury.
13. Always remove battery pack before storing the device. When battery becomes fully charged, unplug the charger from the power supply and remove the battery pack from the charger.
14. Keep battery pack dry, clean, and free from oil and grease. Always use a dry cloth when cleaning. Never use brake fluids, gasoline, petroleum-based products, or any solvents to clean battery pack.
15. Keep the battery pack out of the reach of children.
16. Do not charge the batteries in rain, snow or in damp or wet locations. Do not use the batteries or charger in the presence of explosive atmospheres (gaseous fumes, dust or flammable materials) because sparks may be generated when inserting or removing the batteries which could lead to a fire.

### CHARGER SAFETY INSTRUCTIONS

1. The plug of the charger must match the outlet. Never modify the plug in any way. Unmodified plugs and matching outlets will reduce the risk of electric shock.
2. Ensure the battery pack is charged indoors only, in a dry, cool and well ventilated environment.
3. Do not subject the battery to sunlight over long periods and do not leave it near a heat source. Heat damages the battery and there is a risk of explosion.
4. Allow a hot battery to cool before charging.
5. Do not use non-rechargeable batteries!
6. Do not attempt to charge battery packs other than those supplied. The charger and battery pack supplied with it are specifically designed to work together.
7. Before each use, check the charger, cable, and plug. Do not use a defective charger and do not disassemble the charger. Incorrect reassembly may result in the risk of fire, electric shock, or electrocution.
8. Protect the charger against moisture and wet conditions. There is a danger of electric shock.
9. Operate the charger only with the original batteries. Charging other batteries may result in injuries and risk of fire.
10. Avoid mechanical damage to the charger. This can result in internal short circuits.
11. Do not operate the charger on easily inflammable surfaces (e.g. paper, textiles, etc.). The heating of the battery charger during the charging process could pose a fire hazard.
12. Do not abuse the cord of the charger. Never use the cord for carrying, pulling or unplugging the charger.

13. Keep the cord away from heat, oil, sharp edges or moving parts.
14. Damaged or entangled cords increase the risk of electric shock.
15. Do not operate the charger with a damaged cord or plug, which could cause a short circuit and electric shock. If damaged, immediately discontinue use. Replace the charger with the identical unit as listed in the Product Specifications in this manual. If the power cord for this equipment is damaged, it must be replaced by the manufacturer, a customer service agent of the same or qualified person to prevent hazards.
16. Do not use a charger that has been dropped or received a sharp blow.
17. The voltage indicated on the charger rating plate must correspond to the voltage of the power source.
18. Never touch the charger or charger plug with wet hands.
19. The batteries are not fully charged at the time of delivery. They need to be fully charged before using for the first time. For the first recharge cycle, charge the batteries fully.
20. It is good practice to unplug the charger and remove the lithium-ion battery pack when not in use.
21. This charger is not intended for use by persons (including children) with reduced physical, sensory or mental capabilities, or lack of experience and knowledge, unless they have been given supervision or instruction concerning use of the charger by a person responsible for their safety.
22. Children should be supervised to ensure that they do not play with the charger.
23. Charge in a well-ventilated area. Do not block the charger vents. Keep them clear to allow for proper ventilation. Do not allow smoking or open flames near a charging battery pack. Vented gases may explode. Do not charge the battery outside in freezing weather; charge it at room temperature.
24. Charger is rated for 120 volts only. The charger must be plugged into an appropriate receptacle.

## RECYCLING AND DISPOSAL

**⚠️ WARNING:** Do not dispose of batteries/rechargeable batteries into household waste!

## BATTERY PACK RECYCLING



To preserve our natural resources, please recycle or dispose of batteries properly.

The batteries charged by this charger may contain chemicals and metals that are harmful to the environment. Never dispose of rechargeable batteries in your normal household garbage or in landfill sites as they will add to the pollution of the environment.

**SYMBOLS**

**⚠ WARNING: Some of the following symbols may appear on this snow shovel. Study these symbols and learn their meaning. Proper interpretation of these symbols will allow for more efficient and safer operation of this tool.**

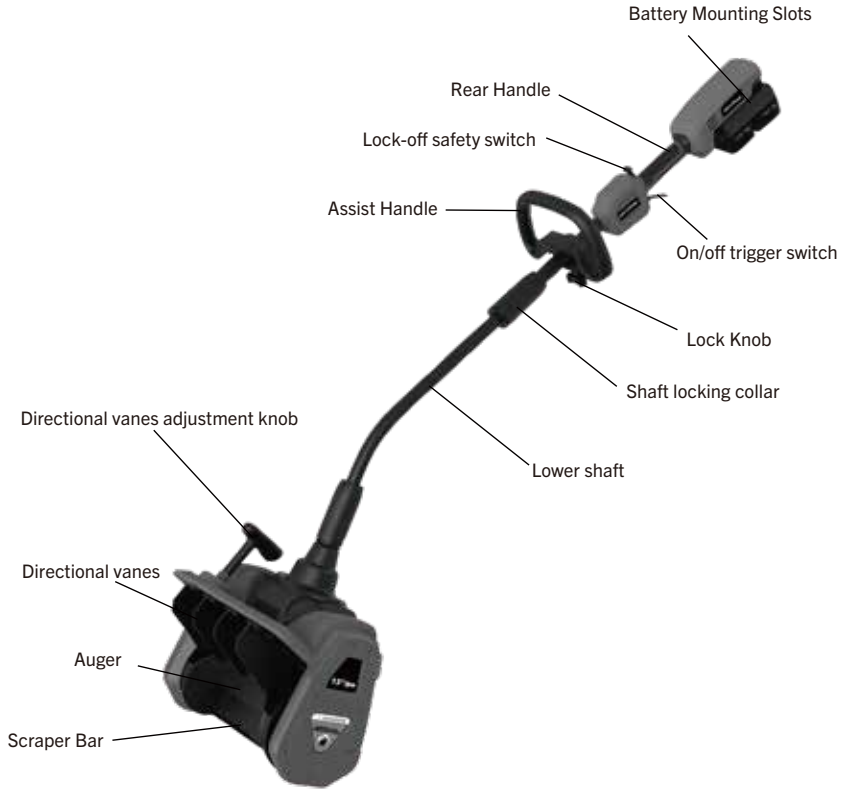
	READ THE OPERATOR'S MANUAL(S)- Read understand and follow all instructions in the user manual(s) before attempting to assemble and operate.
	SAFETY ALERT -Indicates a precaution, a warning or a danger.
	Wear hearing protection. Wear eye protection. Wear breathing protection.
	Wear safety gloves during use to protect hands.
	Do not use hands to unclog chute.
	Keep hands, feet and clothing away from the rotating auger to avoid injury.
	The rotating part will continuously run for several seconds after you turn off the machine.

	WARNING! Do not expose the unit to rain or wet conditions. Keep dry.
	DANGER! Cutting/dismemberment hazard - Keep feet away from the rotating auger.
	CAUTION! Beware of stones and other foreign objects that could be thrown from the appliance.
	Wear safety footwear at all times to provide protection against objects that may accidentally fall on feet.
	DANGER! Cutting/dismemberment hazard - Keep hands away from the rotating auger. Do not use hands to unclog rotor housing. Stop motor before removing debris.
	Keep bystanders and children a safe distance (at least 11 yd/10 m) away from the work area.
	Indoor use only. Only use battery charger indoors.

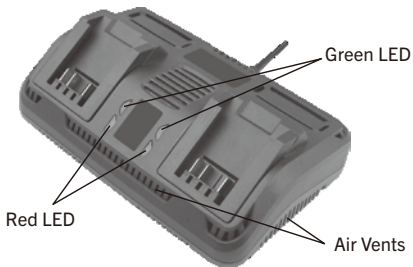


This symbol designates that this tool is listed with Canadian and U.S. requirements by cSGSus Testing Laboratories, Inc. UL 1090, 7th edition, Rev. March 14, 2022 CSA C22.2 No. 147-15, May 2015

## KNOW YOUR SNOW SHOVEL



Dual Charger 5350-024



Replacement  
5Ah battery 5350-012



## CHECKING THE BATTERY CHARGER STATUS

The level of charge remaining in the battery can be checked by using the battery LED power indicator that is contained on the end of the battery.

**NOTE:** The battery charge remaining may be checked while the battery is installed in the tool with the ON/OFF switch turned OFF. It may also be checked while the battery is removed from the tool. **DO NOT check the battery charge remaining while the battery is in the charger.** You will get a false reading and you may also damage the battery status system.

1. Press and hold the battery status button located on the end of the battery.
2. One or more of the Four LED lights in the LED window will come ON to indicate the amount of charge that is remaining in the battery as follows:

Charge Level Indicator						
Amount of Charge Remaining	0 - 10%	10 - 25%	25 - 50%	50 - 75%	75 - 100%	

3. Release the battery status button to turn the LEDs OFF.

## ASSEMBLY AND OPERATING

### CHARGING THE BATTERY PACK

1. Place the battery charger (1) in a dry location near a 110–120V 60Hz outlet (Fig.1).
2. Plug the battery charger into the outlet and make sure the green LED indicator light (5) comes ON. If it does not, refer to the chart (Fig. 2) to identify the problem.
3. Turn the battery (2) upside down and slide it onto the charger.

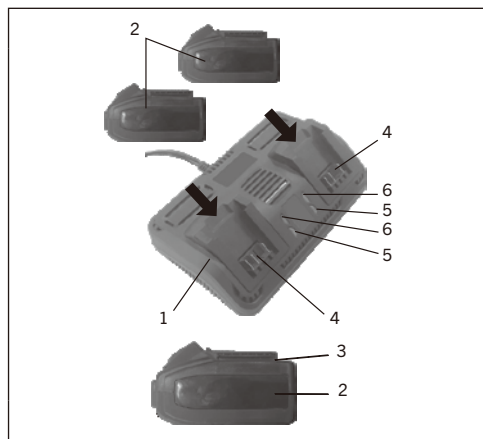






FIG. 1

- NOTE:** a) When the charger is plugged into the wall receptacle and NO battery is on the charger, the green indicator light (5) (Fig.1) will turn ON indicating the charger is “live”.
- b) When a discharged battery is installed on the charger, the green indicator light will turn OFF and the red indicator light (6) (Fig.1) will FLASH. The flashing red indicator light indicates the battery is being charged.
- c) If the red indicator light does not come ON, check to make sure battery pack is slid fully onto the charger and the electrical outlet is working properly.
- d) See (Fig.2) below for other indicator light functions.
- e) A discharged battery pack should be fully charged in up to 160 minutes.
- f) It is normal for the battery charger to hum and be warm to the touch during operation.
- g) If the battery pack does not charge properly, check to make sure the electrical outlet is “live”.
- h) DO NOT charge batteries when the work area or the battery temperature is at or below 5°C (41° F) or above 40°C (105° F).

GREEN LIGHT	RED LIGHT	BATTERY INSERTED INTO CHARGER	SYMBOL	CHARGING STATUS
ON	OFF	NO	NONE	CHARGER CONNECTED TO POWER SUPPLY
OFF	FLASHING	YES		BATTERY BEING CHARGED
ON	OFF	YES		BATTERY FULLY CHARGED
OFF	ON	YES		DEFECTIVE-BATTERY IS CHARGED BUT NOT OPERATIONAL ON TOOL
ON	ON	YES		CHARGING CONDITIONS ARE EITHER TOO HOT OR TOO COLD

**FIG. 2**

## INSTALLING A BATTERY ON THE SNOW SHOVEL

1. Remove the discharged battery pack (1) from the tool by pressing the battery release button (2) on the rear of the battery downward (Fig. 3) and pulling the battery pack out of the tool handle (3) (Fig. 4).
2. Insert the fully charged battery pack into the matching slots in the side of the tool handle where the discharged battery pack has been removed.

**NOTE:** The battery release button will “click” into place when the battery pack is fully installed.

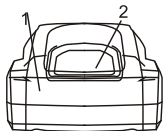


Fig. 3

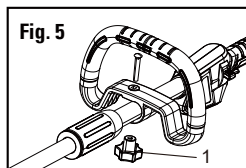


Fig. 4

**⚠ WARNING:** To prevent accidental starting that could cause serious personal injury, always remove the batteries from the product when assembling parts.

### ADJUSTING THE ASSIST HANDLE

The assist handle can be slid up or down, rotated from side to side or forward or backward to place the assist handle in the most comfortable position. Turn the lock knob on the assist handle counter-clockwise to loosen (1) (Fig.5) before adjusting the assist handle position and retighten it to lock the assist handle in the new position.



### JOINING THE SHAFTS

1. Align the pins located at the end of each shaft with the holes in the top of the shaft to be attached.
2. Push the pins in the upper shaft into the holes in the lower shafts.
3. Pull the shaft locking collar over the connection and rotate clockwise to lock the shafts together.
4. To separate the shafts. Rotate the shaft locking collar counter clockwise until loose and pull them apart. Fig. 6

**NOTE:** Hand tighten the shaft locking collar only.

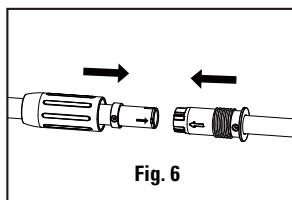


Fig. 6

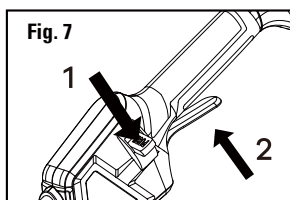


Fig. 7

### STARTING THE SNOW SHOVEL

**⚠ WARNING:** In order to avoid serious injury, the operator and unit must be in a stable position when starting the snow shovel.

**NOTE:** The snow shovel starts only when two battery packs are installed at the same time.

1. Ensure both batteries are charged and inserted into the snow shovel.
2. Push and hold the lock-off safety switch on the top of the tool and then squeeze the On/Off trigger switch. Once the machine powers on, you can release the

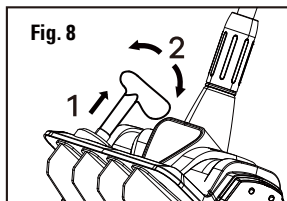
lock-off safety switch (Fig. 7).

3. To stop the cordless snow shovel, release the On/Off trigger switch.

**⚠ WARNING:** Always remove the battery packs from the snow shovel during work breaks and after finishing work and while making adjustments to the shovel.

## ADJUSTING SNOW DIRECTION

- The direction of the snow discharge can be changed by turning the directional vanes adjustment knob.
- Pull the directional vanes adjustment knob "up" and then turn either right or left, depending on which direction the snow is to be discharged, then release the knob to lock direction (Fig. 8).



**IMPORTANT:** DO NOT force the knob. If it won't turn, check for blockages of ice or snow. Remove the battery, clear the blockage, and then try adjusting the directional vanes again.

## APPLICATIONS

This snow shovel is most ideal for clearing snow from sidewalks, steps, decks, patios, and smaller driveways.

## Using The Snow Shovel

**⚠ WARNING:** Always Use Proper Eye Protection That Conforms To ANSIZ87.1 (CAN/CSA Z94.3) While Operating This Appliance.

**⚠ WARNING:** Never use the snow shovel on a rooftop, frozen lakes ice or other unstable surface, which can result in death or serious injury.

**⚠ WARNING:** Make sure that the area to be cleared is free of stones, sticks, wires, gravel, and other objects that could be accidentally thrown by the snow shovel in any direction and cause serious personal injury to the operator and others.

**⚠ WARNING:** To prevent serious personal injury, remove the battery packs from the tool before servicing, cleaning changing attachments or removing material from the tool.

**⚠ WARNING:** DO NOT immerse battery packs in snow, water or other liquids at any time. Battery packs are not waterproof.

- Charge both batteries at the same time to keep the capacity of the batteries the same.
- Start the snow shovel by following the "starting the snow shovel" instructions and push the snow shovel forward after 3 or 5 seconds so that it rides on the scraper. The depth and weight of the snow will determine the forward speed. Do not push too hard.

- When using the snow shovel, hold the tool with a firm grip with both hands while in operation.
- Take notice of the direction of the wind before beginning. When possible, discharge snow in the same direction as the wind to prevent snow from being thrown back into operator's face.
- Some parts of the snow shovel can freeze under extreme weather conditions. Do not attempt to operate the tool with frozen parts.
- If the tool contacts with any type of obstruction during operation, stop it and remove the batteries. Check the tool carefully before using.
- If the snow is deeper than the clearing depth, it may take more than one pass to clear.
- When finished, allow the tool to run for several minutes to allow all snow to clear the auger before storing.

### Troubleshooting

Problem	Possible causes	Solution
The snow shovel does not start.	Battery is not secure	To secure the battery packs, make sure the latches on the top of the battery packs snap into place.
	Battery charge status is low	Charge the battery packs according to the instructions.
The snow shovel leaves a thin layer.	The scraper bar is worn.	Replace the scraper bar.
Unexpected shutdown during work. No snow is thrown from the deck.	Machine is overloaded. The auger is jammed by heavy snow.	Remove the snow from the auger and reduce the machine load intensity.
	The battery packs or the machine is overheated.	Allow the battery packs and/or tool to cool down before resuming work.

## MAINTENANCE

### GENERAL

**⚠ WARNING: When servicing, use only identical replacement parts. The use of any other parts may create a hazard or cause product damage.**

DO NOT use solvents when cleaning plastic parts. Plastics are susceptible to damage from various types of commercial solvents and may be damaged by their use. Use a clean cloth to remove dirt, dust, oil, grease etc.

**⚠ WARNING: Do not allow brake fluids, gasoline, petroleum-based products, penetrating oils, etc. to come into contact with plastic parts. They contain chemicals that can damage, weaken or destroy plastic.**

DO NOT abuse power tools. Abusive practices can damage the tool and the workpiece.

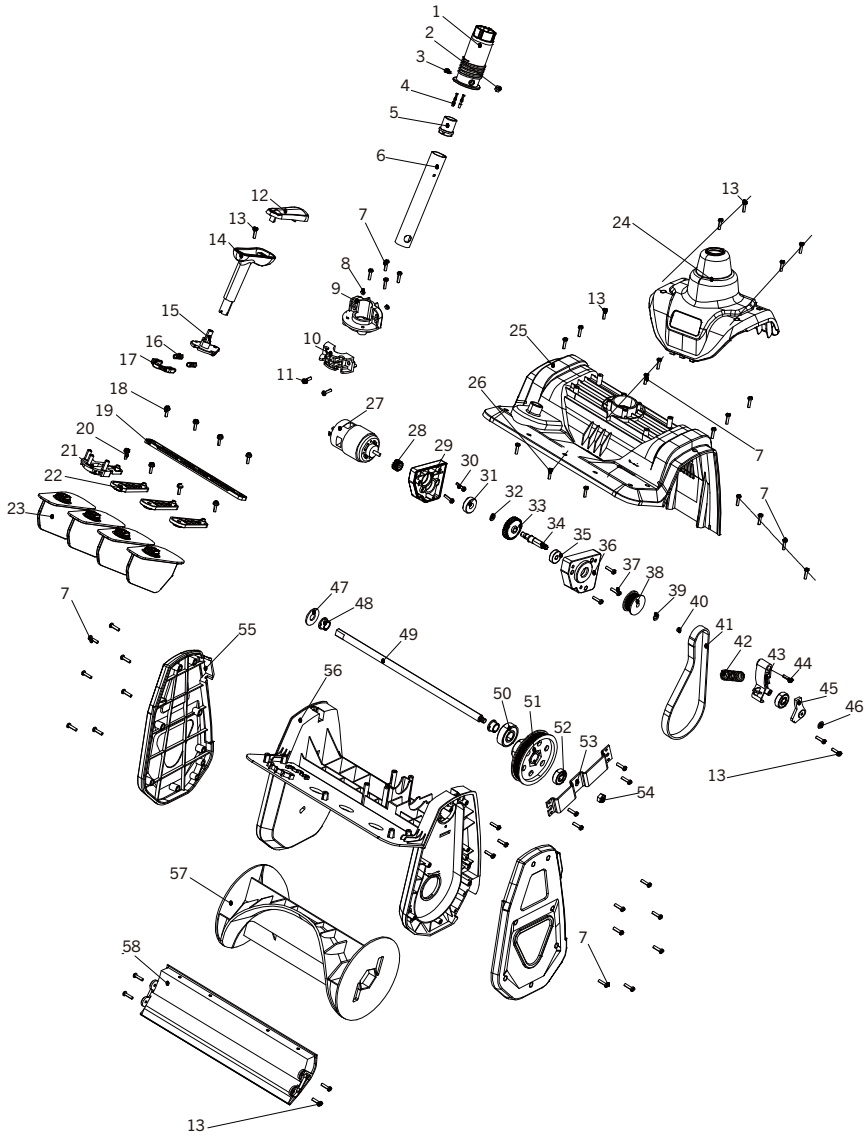
**⚠ WARNING: DO NOT attempt to modify tools or create accessories. Any such alteration or modification is misuse and could result in a hazardous condition leading to possible serious injury. It will also void the warranty.**

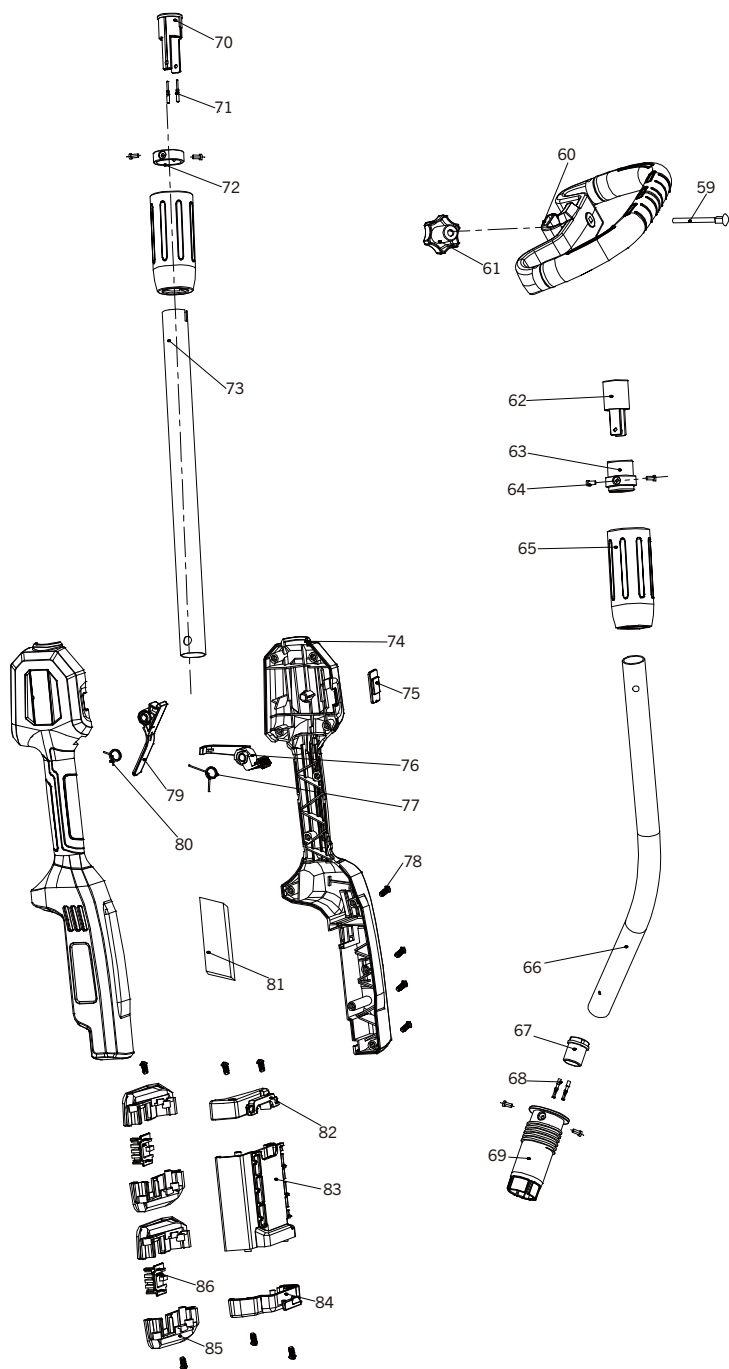
### CLEANING

1. Remove the batteries.
2. Brush or blow dust and debris out of the air vents using compressed air or a vacuum. Keep the air vents free of obstructions, sawdust, and wood chips  
Do not spray, wash, or immerse the air vents in water.
3. Wipe off the housing and the plastic components using a moist soft cloth. Do not use strong solvents or detergents on the plastic housing or plastic components. Certain household cleaners may cause damage, and may cause a shock hazard.

**⚠ WARNING: Upon removal of the battery pack, cover the terminals of the battery pack with electrical tape or heavy-duty adhesive tape. Never touch both terminals with metal objects or parts, because a short circuit may result. Keep away from children. Do not attempt to destroy or disassemble battery pack or remove any of its components. Rechargeable batteries must be recycled or disposed of properly. Failure to comply with these warnings could result in fire and serious injury.**

EXPLODED VIEW





## PARTS LIST

**⚠ WARNING:** When servicing, use only original equipment replacement parts. The use of any other parts may create a safety hazard or cause damage to the snow shovel.

Any attempt to repair or replace electrical parts on this snow shovel may create a safety hazard unless repairs are performed by a qualified technician. For more information, call the Toll-free Helpline, at 1-866-349-8665 Monday - Friday from 9am to 5pm Eastern Standard Time.

Always order by PART NUMBER, not by key number.

Key #	Part #	Part Name	Quantity
1	1	Threaded sleeve	1
2	2	M4x3 Nut	1
3	3	Screw M4x32	1
4	4	Female plug	2
5	5	Female socket	1
6	6	25MM aluminum tube head	1
7	7	Screw ST3.9X22	24
8	8	M5 self-locking nut	2
9	9	Main body of bearing seat	1
10	10	Bearing seat cover	1
11	11	Screw M5x16	2
12	12	T-shaped handle upper cover	1
13	13	Screw ST3.9x14	24
14	14	T-shaped handle lower cover	1
15	15	Connecting seat handle	1
16	16	Push button pressure spring	2
17	17	Connecting seat rotating buckle	1
18	18	Screw ST2.9X10	4
19	19	Diversion bracket	1
20	20	Outlet sleeve	4
21	21	Connection seat diversion bracket	1
22	22	Diversion small bracket	3
23	23	Diverter plate	4
24	24	Top cover	1
25	25	Upper cover	1
26	26	Screw ST3.9X10	1
27	27	997 motor	1
28	28	Motor gear	1
29	29	Lower cover of gearbo	1
30	30	Screw M5x8	2
31	31	627 bearing	1
32	32	φ 8 snap ring	1
33	33	Driven gear	1
34	34	Snow shovel with wheel axle	1
35	35	6000 bearing	2
36	36	Gearbox cover	1
37	37	Screw ST3.5X14	3

Key #	Part #	Part Name	Quantity
38	38	Small pulley	1
39	39	Shim $\phi$ 6x $\phi$ 12x1	1
40	40	M6 self-locking nut	1
41	41	Belt	1
42	42	Adjusting the seat pressure spring	1
43	43	Main body with adjustable seat	1
44	44	Screw ST4X20	1
45	45	With adjustable seat cover plate	1
46	46	Shim $\phi$ 4x $\phi$ 12x1	1
47	47	Shim $\phi$ 12.5x $\phi$ 30x2.5	1
48	48	Shaft sleeve	2
49	49	Twisted dragon shaft	1
50	50	6808 bearing	1
51	51	Large pulley	1
52	52	6901 bearing	1
53	53	Large pulley pressure plate	1
54	54	Left-handed self-locking nut M8	1
55	55	Left and right side covers	1
56	56	Subject	1
57	57	Twisted dragon	1
58	58	Snowplow	1
59	59	Screw M6x65	1
60	60	Second handle	1
61	61	Knob	1
62	62	Male fixed seat	1
63	63	25MM plug sleeve	1
64	64	Stainless Steel Mou Nail 4X7	6
65	65	Thread knob	2
66	66	1.8MM small aluminum pipe (bent pipe)	1
67	67	Female fixed socket	1
68	68	Female plug	2
69	69	Threaded sleeve	1
70	70	Tolerance fixing seat	1
71	71	Male plug	2
72	72	Plug sleeve	1
73	73	Large aluminum tube	1
74	74	Left and right handles	1
75	75	Left and right handle decorative cover	1
76	76	Upper button	1
77	77	Upper button torsion spring	1
78	78	Screw ST3.9X14	17
79	79	Lower button	1
80	80	Lower button torsion spring	1
81	81	Lower button	1
82	82	Upper cover of adapter	1
83	83	Adapter socket	1
84	84	Lower cover of adapter	1

Key #	Part #	Part Name	Quantity
85	85	Left and right interfaces of battery	2
86	86	Battery Pin Holder	2

## **WARRANTY**

### **BENCHMARK 40V MAX<sup>†</sup> 13" SNOW SHOVEL**

If this Benchmark tool fails due to a defect in material or workmanship within five years from the date of purchase, return it to any Home Hardware store with the original bill of sale for exchange. 3 years for the battery and the charger. This warranty does not include expendable parts including but not limited to blades, brushes, belts, light bulbs.

This warranty covers defects in material or workmanship only. It does not cover normal wear and tear, failure due to abuse/misuse, or defects caused by careless or accidental mishandling. If this Benchmark product is used for commercial or rental purposes, this warranty does not apply.

# 40V MAX<sup>†</sup> 13" SNOW SHOVEL



Includes 2 batteries & 1 charger  
5 Year Limited Warranty on tool  
3 Year Limited Warranty on battery and charger

**BENCHMARK**<sup>TM</sup>  
MC

**BENCHMARK TOOLS CANADA**  
ST. JACOBS, ONTARIO N0B 2N0  
© 2024 Home Hardware Stores Limited

**CUSTOMER SERVICE/TECH SUPPORT**  
1-866-349-8665

**5554-516**

Made in China



\*This Benchmark<sup>TM</sup> product carries a five (5) year LIMITED warranty against defects in workmanship and materials. The charger and batteries carry a three (3) year LIMITED warranty. See Owner's Manual for full details.



**READ ALL INSTRUCTIONS BEFORE FIRST USE.  
KEEP THIS MANUAL FOR FUTURE REFERENCE.  
KEEP AWAY FROM CHILDREN.**

† Uses two 20v Max lithium-ion batteries that deliver an initial battery voltage (measured without a workload) of 40 volts. Nominal voltage is 36V.



**WEAR CSA APPROVED  
EYE PROTECTION**



**WEAR EAR  
PROTECTION**



**WEAR A  
FACE MASK**