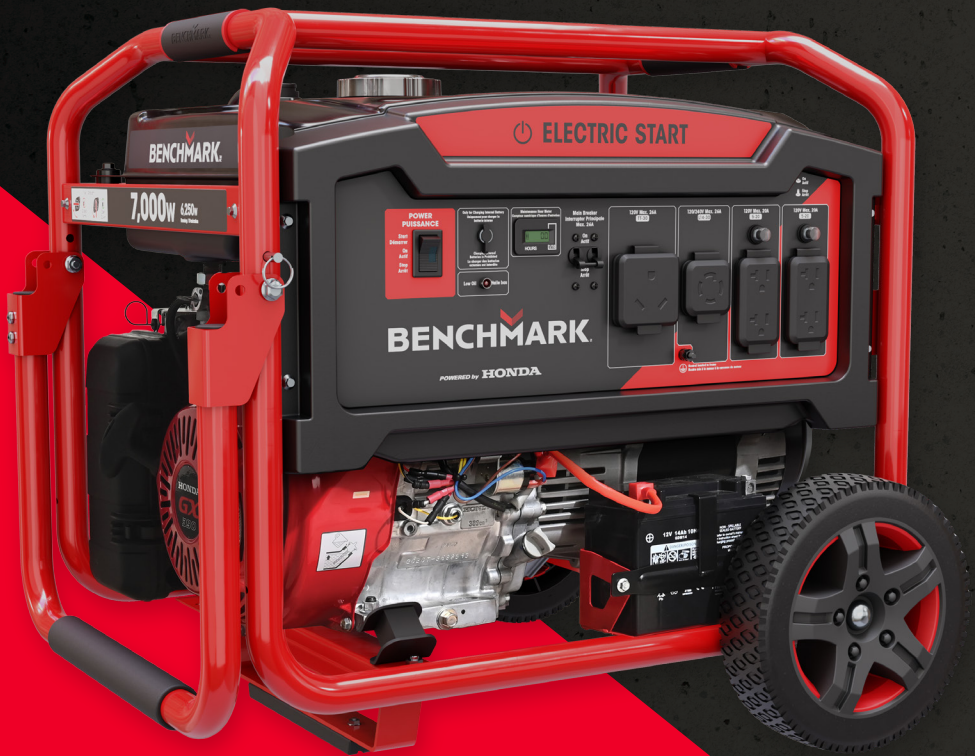


5210-241

BENCHMARK™

BG7000H



MANUAL



This product is supported by **Midland Power**. Contact us directly for assistance and warranty help. Do not return this product to store.

You must register online for your warranty to be valid. It only takes a minute, do it now while you still have your purchase receipt.

Register Your Product Online

[www.benchmark.midlandpowerinc.com/
register-warranty](http://www.benchmark.midlandpowerinc.com/register-warranty)



Support for your product is available online, including parts, service center locations, and live expert advice.

Visit us online at

www.benchmark.midlandpowerinc.com



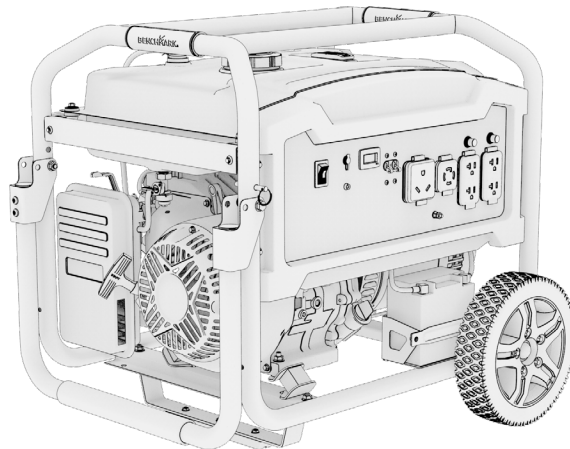
Or call us anytime at **1-877-528-3772**.

Thanks for choosing the BG7000H!

You're excited to get started, we'll keep this brief.

READ THIS ENTIRE GUIDE BEFORE USING THIS PRODUCT AND SAVE FOR LATER USE.

This user guide contains important instructions including safety, setup, operation, and maintenance that must be followed. All information in this guide is based on information available at the time of print. This guide or revised editions can be found on our website for download. No part of this publication may be reproduced without written permission.



THIS PRODUCT MEETS ALL CERTIFICATION REQUIREMENTS FROM:



The engine exhaust from this product contains chemicals known to cause cancer, birth defects or other reproductive harm.



©2024 Benchmark. All Rights Reserved.

BG7000H_Manual_EN_2024-05-22

TABLE OF CONTENTS

1. Safety	1
2. Learn About Your Generator	5
3. Pre-Operation Check	13
3.1 Prepare the Air Filter and Check the Oil Level	13
3.2 Check the Fuel Level	13
3.3 Electric Start Battery Connection	14
4. Using Your Generator	16
4.1 Starting your Gasoline Generator	17
4.2 Using Your Appliances	19
4.3 Stopping the Engine	20
5. Folding the Handle	21
6. Maintenance	22
6.1 Maintenance Schedule	23
6.2 Emission Control System	23
6.3 Changing the Oil	24
6.4 Cleaning the Air-Filter	24
6.5 Spark Plug Service	24
6.6 Spark Arrester Maintenance	24
6.7 Fuel Filter Maintenance	25
6.8 Battery Charger	25
7. Transportation & Storage	27
8. Troubleshooting	28
9. Technical Specifications	30
10. Appendix	31
11. Limited Warranty	32

1. SAFETY

⚠ DANGER	
Using a generator indoors CAN KILL YOU IN MINUTES . Generator exhaust contains carbon monoxide. This is a poison you cannot see or smell.	
 NEVER use inside a home or garage, EVEN IF doors and windows are open.	 Only use OUTSIDE and far away from windows, doors, and vents.
Avoid other generator hazards. READ MANUAL BEFORE USE.	

⚠ DANGER! ⚠

Using a generator indoors can kill you in minutes.

The engine exhaust from this product contains chemicals known to cause cancer, birth defects or other reproductive harm.

1.1 OPERATOR SAFETY

⚠ WARNING!

- Always perform an oil, fuel and air filter check before starting the engine.
- Properly clean and maintain the equipment.
- Operate the generator according to instructions for safe and dependable service.
- Before operating the generator, read the user guide carefully. Otherwise, it may result in personal injuries or equipment damage.
- Never run the generator in an enclosed area to avoid harm from exhaust emissions of a poisonous carbon monoxide gas.
- Be careful not to touch the exhaust system during operation due to risk of burns.
- Pay attention to the warning labels. The engine exhaust system will become heated during operation and remain hot immediately after the engine is stopped.
- Gasoline is a highly flammable and explosive liquid. Refuel in a well ventilated area with the engine stopped.
- Use of gasoline with an ethanol content greater than 10% can damage the engine and fuel system and will void the manufacturer's warranty.
- When refueling the generator, keep it away from cigarettes, open flames, smoke and/or sparks.

- Place the generator at least 10 feet away from buildings or other equipment during operation.
- Run the generator on a level surface. Tilting the generator may result in fuel spills.
- Know how to stop the generator quickly and understand operation of all the controls. Never permit anyone to operate the generator without proper instructions.
- Keep children, pets and machinery with rotating parts away during operation.
- Do not operate the generator in rain or snow.
- Do not allow any moisture to come in contact with the generator.
- Do not touch the spark plug while the engine is operating or shortly after the engine has been shut down.

1.2 AC SAFETY

WARNING!

Before connecting the generator to an electrical device or power cord:

- Make sure that everything is in proper working order. Faulty devices or power cords can lead to an electrical shock.
- Turn off the generator immediately if the device begins to operate abnormally. Then disconnect the device and investigate the problem.
- To prolong engine life, make sure that the combined load of your devices does not exceed the rated running wattage of the generator.
- Connections for standby power to a building's electrical system must be done by a qualified electrician and must comply with all applicable laws and electrical codes. Improper connections may cause serious injuries to electrical workers during a power outage, and when the utility power is restored, the generator may explode or cause fires. The generator shall be connected through transfer equipment that switches all conductors other than the equipment grounding conductor. The frame of the generator must be connected to an approved grounding electrode.
- BG7000H is neutral bonded to frame. There is a permanent conductor between the generator (stator winding) and the frame.
- Electrical devices that require a grounded receptacle pin connection will not function if the receptacle ground pin is not functional.

1.3 PROPANE SAFETY

⚠ WARNING!

- Propane is a Liquid Petroleum Gas (LPG) which is highly flammable and explosive.
- Do not store or use LPG in an enclosed area.
- Do not expose the LPG cylinder to excessive heat.
- Fully close the LPG cylinder when the generator is not in use or is running with gasoline.
- Never use a gas container, LPG connector hose, LPG cylinder or any other fuel item that appears damaged.
- If you smell gas, close the gas supply and check all connections for leaks before attempting to use the generator again.
- Keep the LPG cylinder in an upright position.
- Keep a fire extinguisher near the generator all the time.


1.4 MAINTENANCE SAFETY

⚠ WARNING!

- After any maintenance is performed, wash hands immediately using soap and clean water because repeated exposure to lubricant may cause skin irritation.
- Do not clean the filter element with flammable liquids like gasoline because an explosion may occur.
- Turn off the engine and allow the generator to cool down before performing any maintenance. Failure to do so can cause severe personal injury or death.
- Always wear safety glasses when cleaning the generator set with air.
- Do not clean the generator set with a pressure washer because it can cause damage to the generator set.
- When working with batteries, ventilate the area, use safety glasses, do not smoke. Always disconnect the negative first and reconnect it last.
- Use rubber gloves when coming into contact with engine oil.
- Always stop the generator set before removing the oil filler cap.
- Only qualified maintenance personnel with knowledge of fuels, electricity, and machinery hazards should perform maintenance procedures.
- See 'Maintenance Schedule' for the recommended maintenance schedule.

1.5 OTHER SAFETY TIPS

⚠ WARNING ⚠
AVERTISSEMENT

 **TOXIC FUMES HAZARD.** Running engines give off carbon monoxide, an odourless poisonous gas that can cause nausea, fainting, or death. Do not start engine indoors or in an enclosed area, even if the windows and doors are open.

DANGER TOXIQUE. Faire fonctionner un moteur dégage de l'oxyde de carbone, un gaz inodore toxique qui peut provoquer la nausée, évanouissement ou la mort. Ne démarrer pas le moteur à l'intérieur ou dans une espace clos, même si les fenêtres et les portes sont ouvertes.

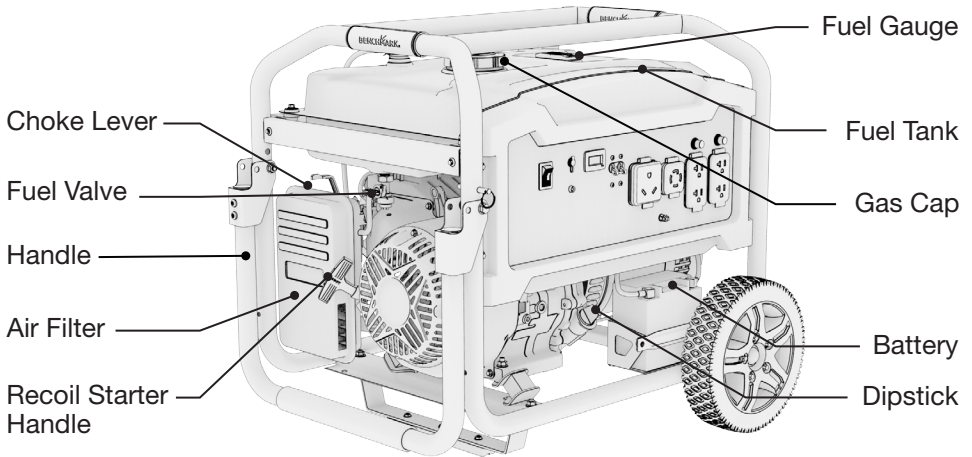
⚠ WARNING!

- To avoid breathing in poisonous carbon monoxide from the exhaust gases, adequate ventilation should be provided, only operate the generator outside and away from enclosed areas, windows, and doors.
- If the generator set is stored outdoors, check all the electrical components on the control panel before each use. Moisture can damage the generator and can lead to an electric shock.
- Generators vibrate in normal use. During and after the use of the generator, inspect the generator as well as extension cords and power supply cords connected to it for damage resulting from vibration. Have damaged items repaired or replaced as necessary. Do not use plugs or cords that show signs of damage such as broken or cracked insulation or damaged blades.
- If you start to feel sick, dizzy, or weak after the generator has been running, move to fresh air **RIGHT AWAY**. See a doctor. You could have carbon monoxide poisoning.

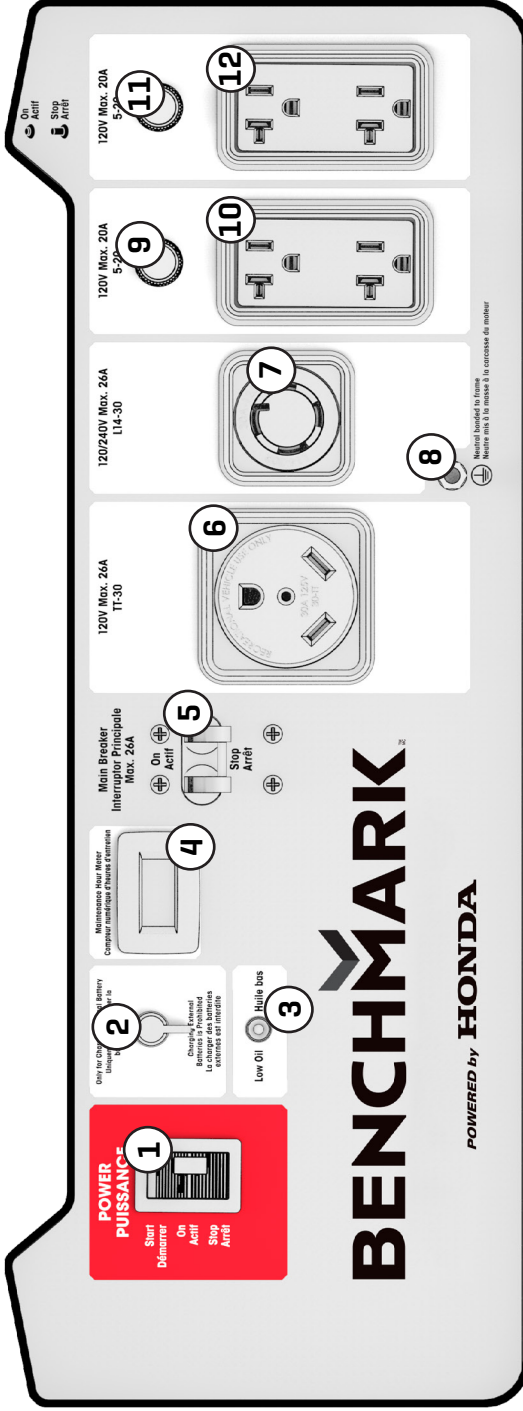
2. LEARN ABOUT YOUR GENERATOR

This section will show you how to identify key parts of your generator. Going over the terminology below will make sure we're on the same page.

2.1 COMPONENT IDENTIFICATION



2.2 CONTROL PANEL



1. Power Switch
2. Startup Battery Wall Charger Port
3. Low Oil Light
4. Maintenance Hour Meter
5. Master Breaker
6. 120V 26A (TT-30)
7. 120/240V 26A (L14-30)
8. Ground Connection
9. 20A AC Breaker
10. 120V 20A (5-20)
11. 20A AC Breaker
12. 120V 20A (5-20)

2.3 CONTROL FUNCTIONS

AC Circuit Breakers

- While the generator is running, the breakers should be in the ON position.
- If the current has exceeded its limits the breaker will automatically pop out to the OFF position. Reduce the electrical load on the generator and push the button back to the ON position.

Battery Charging Port

- When the generator will be stored for an extended period of time plug the battery charger into a 120V outlet every two months to top up the battery and prolong its life (Charger sold separately).

Ground Terminal

⚠ WARNING!

Before using the ground terminal consult a qualified electrician, electrical inspector, or local agency having jurisdiction for local laws and codes that apply to the intended use of the generator.

- BG7000H is neutral bonded to frame.
- The ground terminal is connected to the non-current carrying metal parts (such as the fuel tank), the frame, and the ground terminals of the AC outlets.

Hour Meter

- Always on display shows total run time. Perform maintenance at the proper intervals according to the 'Maintenance Schedule' section of this manual.

Low Oil Indicator Light

- The oil alert system is designed to prevent engine damage caused by an insufficient amount of oil in the crankcase. Before the oil level in the crankcase reaches an unsafe limit, the oil alert system will automatically shut down the engine (the power switch remains in the ON position).
- If the oil alert system shuts down the engine, the low oil indicator light (red) will turn on. Check the engine oil level.

2.4 MAKE SURE YOU HAVE EVERYTHING

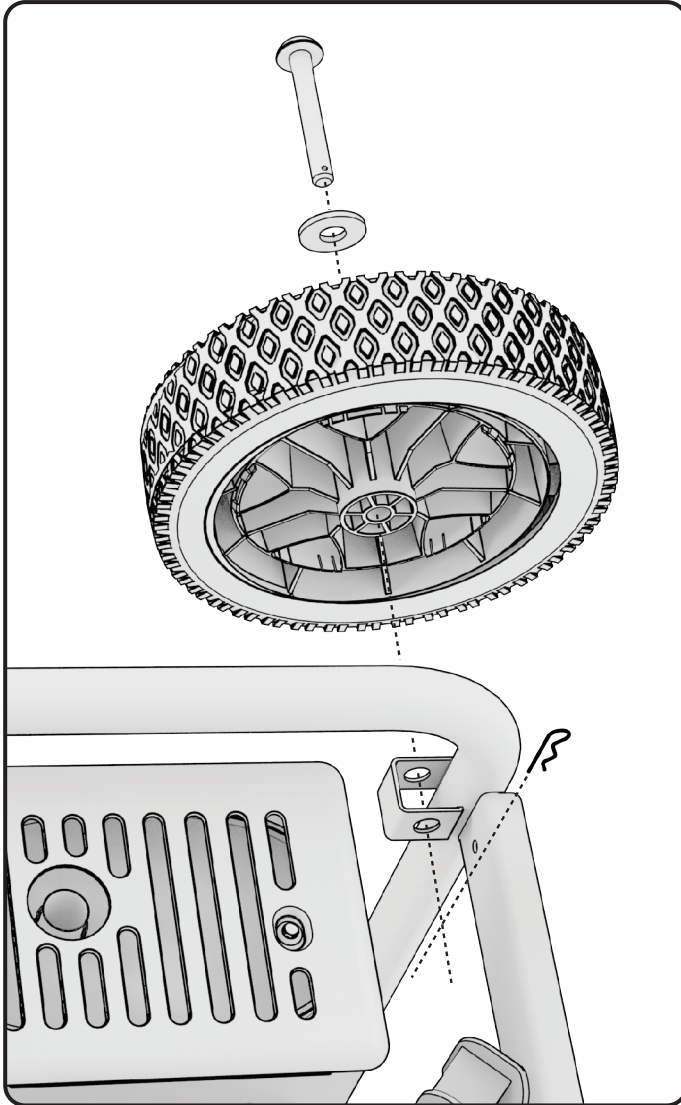
Make sure your generator has everything listed in the table below.

ITEMS INCLUDED	QUANTITY
English user guide	1
French user guide	1
Oil funnel	1
Spark plug wrench	1
Metal bar for spark plug wrench	1
Handle	1
Handle grip	1
Handle mount bolt	2
Frame mount bolt	2
Frame mount nut	2
Frame mount washer	4
Handle pin	2
Foot	1
Foot pad	1
Foot pad bolt	3
Foot pad nut	3
Frame mount bolt	2
Frame mount nut	2
Wheel	2
Short axle	2
Washer	2
Cotter pin	2

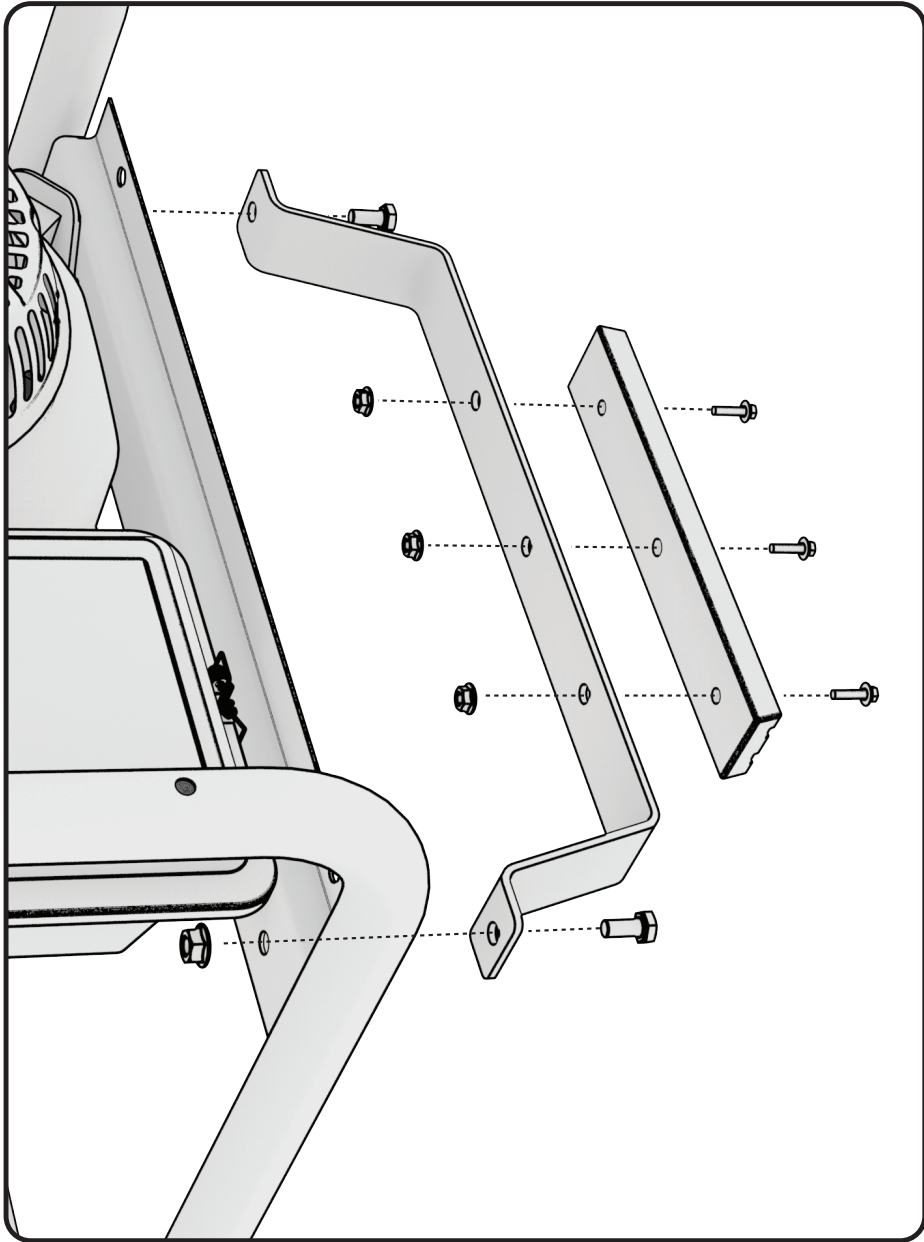
2.5 ASSEMBLY INSTRUCTIONS

Setup of your BG generator is designed to get you up and running as quickly as possible. If equipped with your generator, install the wheel, handle, and feet kits, then continue on to Chapter 3.

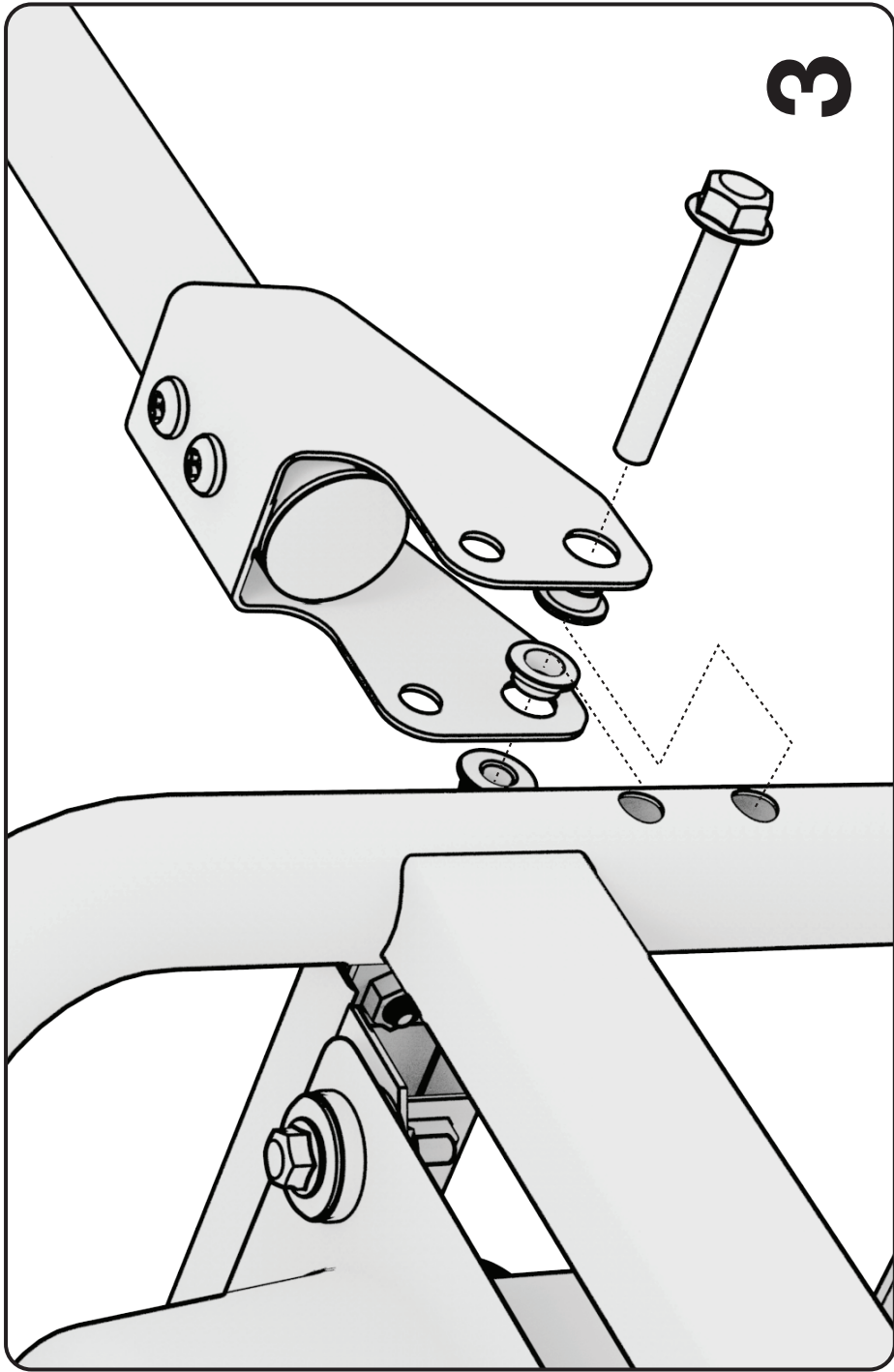
1. Install the wheels, foot, and handle as shown below.



Install Wheel Kit



Install Foot



Install Handle Kit Step 3 (Repeat for other side)

3. PRE-OPERATION CHECK

These quick checks should be done each time the generator is started to ensure you get the most out of your generator.

Set the generator on a level surface and the power switch to STOP.

3.1 PREPARE THE AIR FILTER AND CHECK THE OIL LEVEL

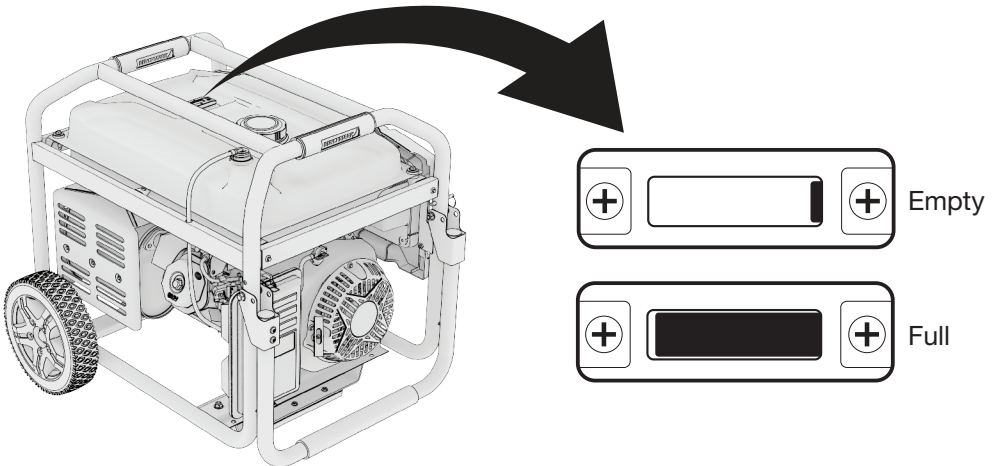
Refer to Honda's engine owner's manual.

3.2 CHECK THE FUEL LEVEL

⚠ WARNING!

Gasoline is highly flammable and explosive under certain conditions. Refuel in a well-ventilated area with the engine stopped. Do not smoke or allow open flames or sparks in the area where the generator is being refueled or where gasoline is stored. Do not overfill the tank. Be careful not to spill fuel when refueling. Wipe up any spilled gasoline and let the area dry before starting the engine.

Gasoline substitutes such as gasohol are not recommended. They may be harmful to the fuel system components.



1. Check the fuel level by reading the gauge or removing the fuel tank cap to visually check the level.
2. Add fuel. Tighten the fuel cap securely after refilling.

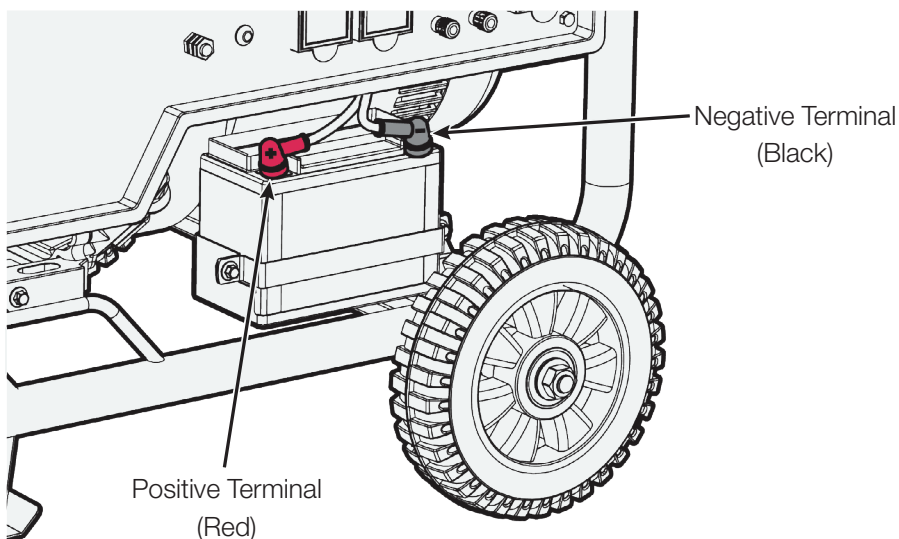
NOTE

- Only use unleaded gasoline (Pump Octane 87 or higher).
- Never use stale or contaminated gasoline, or an oil/gasoline mixture.
- Avoid getting dirt or water into the fuel tank.
- Do not use a mixture of gasoline containing methanol. This will cause serious damage to the engine.
- Use of gasoline with an ethanol content greater than 10% can damage the engine and fuel system and will void the manufacturer's warranty.

3.3 ELECTRIC START BATTERY CONNECTION

⚠ WARNING!

Batteries produce explosive gases. Keep sparks, flames and cigarettes away from the battery at all times.






1. Connect the red cable to the positive terminal of the battery. Ensure the connection is secured by using the fastener at the battery terminal.
2. Connect the black cable with the negative terminal of the battery. Ensure the connection is secured by using the fastener at the battery terminal.

NOTE

- The onboard electric start battery recharges while the generator is running.
- Be sure to connect the electric start battery to the generator set before operation. Do not reverse the polarity of the terminals when charging

the battery. Serious damage to the generator and/or battery may occur. Do not attempt to connect the battery while the generator engine is running. Disconnect the cables from the battery while the generator is in storage.

4. USING YOUR GENERATOR

⚠ DANGER	
Using a generator indoors CAN KILL YOU IN MINUTES . Generator exhaust contains carbon monoxide. This is a poison you cannot see or smell.	
 	
NEVER use inside a home or garage, EVEN IF doors and windows are open.	Only use OUTSIDE and far away from windows, doors, and vents.
Avoid other generator hazards. READ MANUAL BEFORE USE.	

⚠ DANGER! ⚠

Using a generator indoors WILL KILL YOU IN MINUTES.

Generator exhaust contains high levels of carbon monoxide (CO), a poisonous gas you cannot see or smell. If you can smell the generator exhaust you are breathing CO. Even if you cannot smell the exhaust, you could be breathing CO.

NEVER use a generator inside a home, garage, crawlspace, or other partly enclosed area, deadly levels of carbon monoxide can build up in these areas. Using a fan or opening windows and doors will NOT supply enough fresh air.

ONLY use a generator outdoors and far away from open windows, doors, and vents. These openings can pull in generator exhaust. Even when you use a generator correctly, CO may leak into the home. ALWAYS use a CO alarm in your home.

If you start to feel sick, dizzy, or weak after the generator has been running, move to fresh air RIGHT AWAY and seek medical attention. You could have carbon monoxide poisoning. Never run the generator in an enclosed or even partially enclosed area where people may be present.

⚠ WARNING!

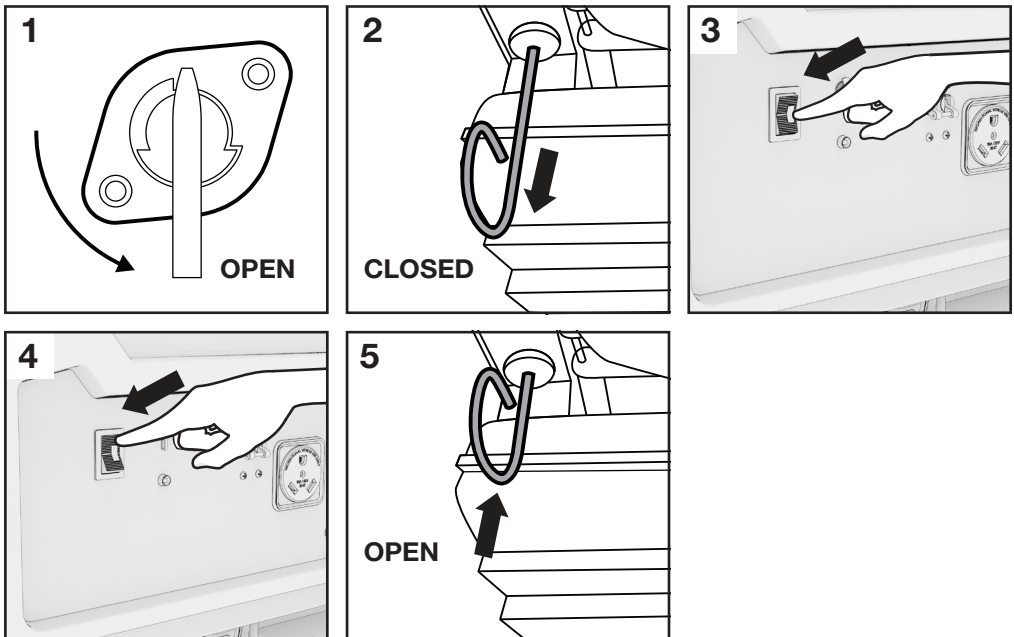
Before using the generator, a ground wire may need to be connected to the ground terminal. The terminal is located on the front panel. Before using the ground terminal consult a qualified electrician.

4.1 STARTING YOUR GASOLINE GENERATOR

NOTE

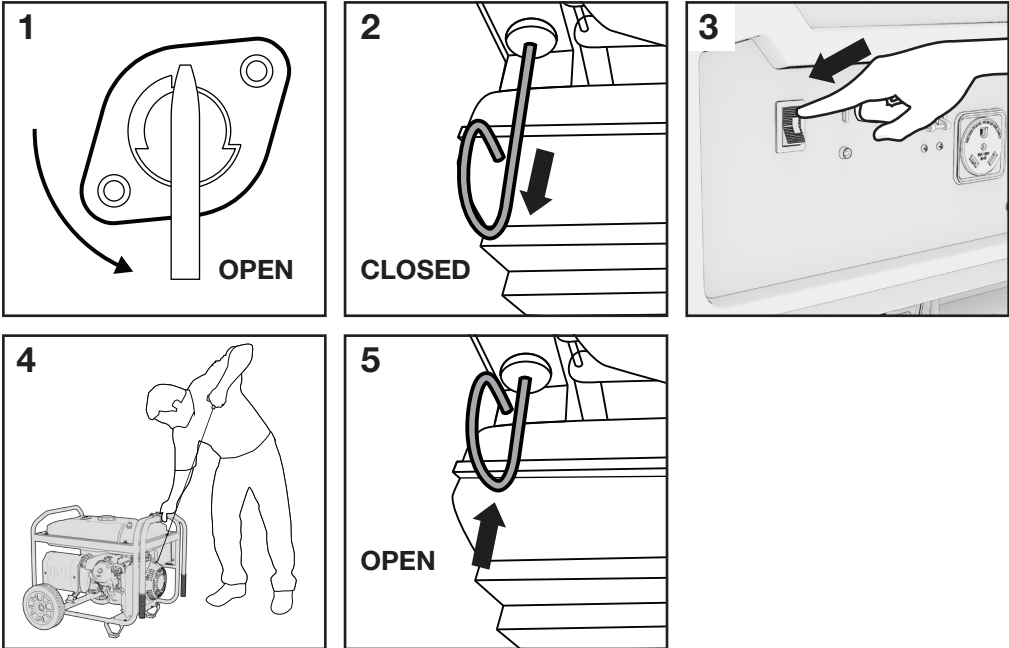
- Do not push the choke lever to the START/CLOSED position when the engine is hot or ambient air temperature is high.
- If recoil starting, return the starter grip slowly by hand, do not let it snap back.
- If there is no electric-start battery in the generator or the battery has died, the generator can only be started using the recoil method. If there is a battery and it is drained, running the generator will recharge the battery.

4.1.1 ELECTRIC START



1. Rotate the fuel valve to the OPEN position.
2. If the engine is cold, push the choke lever to the CLOSED position. The choke is used to provide the proper air-fuel mixture when the engine is cold. You can find the choke lever behind the air filter on the back side of your generator.
3. Turn the power switch to the ON position.
4. Press and hold the START button for 1 second, or until the generator starts, then release it.
5. When the engine warms up push the choke lever to the OPEN position.

4.1.3 MANUAL RECOIL START



1. Rotate the fuel valve to the OPEN position.
2. If the engine is cold push the choke lever to the CLOSED position. The choke is used to provide the proper air-fuel mixture when the engine is cold. You can find the choke lever behind the air filter on the back side of your generator.
3. Turn the power switch to the ON position.
4. Pull the starter slowly until it engages then pull quickly. Repeat until the generator starts.
5. When the engine warms up push the choke to the OPEN position.

4.2 USING YOUR APPLIANCES

Before starting make sure you know what you can power with your generator.

Here's how you can decide:

Add the watt ratings of all loads the generator will be powering at the same time. Make sure the total wattage will not exceed the generator's rating.

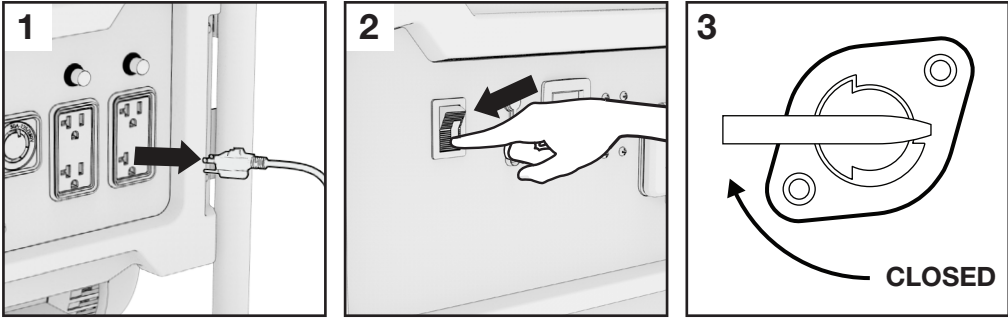
EXAMPLE:

A generator set rated 5000W can power two 1500W heaters, a 900W circular saw, a 500W drill and a 100W light at the same time (4500W combined). However, to operate an extra 900W saw, it will be necessary to disconnect one of the 1500 W heaters.

NOTE

- To stop the engine in an emergency, turn the engine switch to STOP. Always connect the generator to the ground terminal to prevent electrical shock.

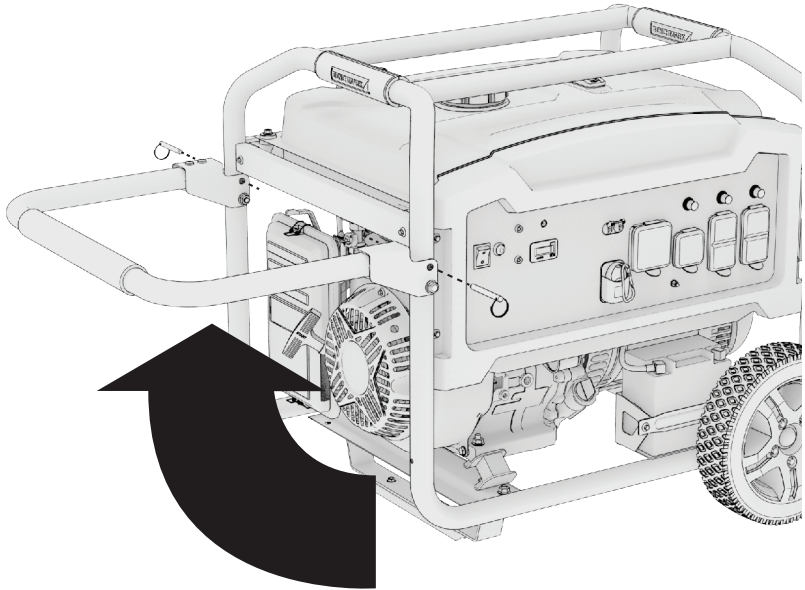
4.3 STOPPING THE ENGINE



1. Switch off the connected electrical appliances, and disconnect them from the generator.
2. Turn the power switch to the STOP position.
3. Turn the fuel valve to the CLOSED position.

5. FOLDING THE HANDLE

The handle folds down for compact storage and locks up into position for easy maneuvering.



1. Pull up the handle into the upright position.
2. Insert the locking pin on both sides.

6. MAINTENANCE

Proper maintenance keeps your generator in the best operating condition by ensuring safe, economical and trouble-free operation. Only use genuine parts and recommended fluids to replace the worn components. Improper maintenance may cause the generator to malfunction and can lead to serious injury. Contact customer support if you have any maintenance questions.

General Inspection Tips

- Look for fuel leaks around the fuel tank, fuel hose, and fuel valve. Close the fuel valve and repair leaks immediately.
- Look and listen for exhaust leaks while the engine is running. Have all the leaks repaired before continuing operation.
- Check for dirt and debris and clean as necessary .
- Check the engine oil level and add oil as necessary.

6.1 MAINTENANCE SCHEDULE

Refer to Honda's engine owner's manual.

6.2 EMISSION CONTROL SYSTEM

Emission Source

Exhaust gas contains carbon monoxide, nitrogen oxides (NOx) and hydrocarbons. It is very important to control the emissions of NOx and hydrocarbons as they are a major contributor to air pollution. Carbon monoxide is a poisonous gas. The emission of fuel vapors is a source of pollution as well. The generator engine utilizes a precise air-fuel ratio and emission control system to reduce the emissions of carbon monoxide, NOx, hydrocarbons and evaporative fuel emissions.

Regulation

Your engine has been designed to meet current Environmental Protection Agency (EPA) clean air standards. The regulations dictate that the manufacturer provides operation and maintenance standards regarding the emission control systems. Tune up specifications are provided in the Specifications section and a description of the emission control system may be found in the appendix to this manual. Adherence to the following instruction will ensure your engine meets the emission control standards.

Modification

Modification of the emission control system may lead to increased emissions.

Modification is defined as the following:

- Disassembling or modifying the function or parts of the intake, fuel or exhaust system.
- Modifying or destroying the speed governing function of the generator.

Engine faults that may affect emission

Any of the following faults must be repaired immediately. Consult with your authorized service centre for diagnosis and repair:

- Hard starting or shut down after starting.
- Unstable idle speed.
- Shut down or backfire after applying an electrical load.
- Backfire or after fire.
- Black smoke and/or excessive fuel consumption.

Replacement parts and accessories

The parts making up the emission control system in your product's engine have been specifically approved and certified by the regulatory agencies. You can trust that the replacement parts supplied by customer service have been manufactured to the same production standard as the original parts. The use of replacement parts or accessories which are not designed for your engine – may negatively affect the engine emission performance. Therefore only use replacements parts and accessories from a qualified service centre to guarantee that the replacement products will not adversely affect emission performance.

Replacement parts other than those from an authorized service centre will void the warranty.

6.3 CHANGING THE OIL

Refer to Honda's engine owner's manual.

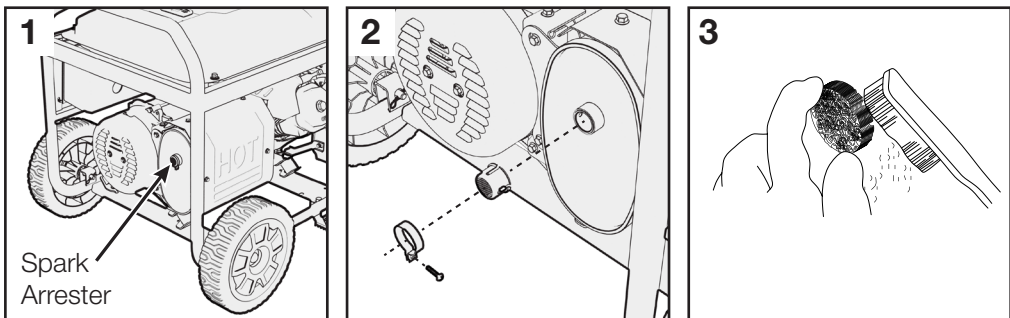
6.4 CLEANING THE AIR-FILTER

Refer to Honda's engine owner's manual.

6.5 SPARK PLUG SERVICE

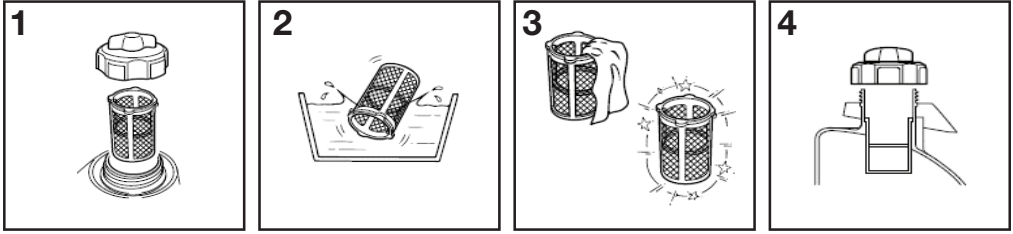
Refer to Honda's engine owner's manual.

6.6 SPARK ARRESTER MAINTENANCE



1. After the engine has cooled down remove the spark arrester from the muffler by loosening the screw.
2. Use a brush to remove carbon deposits from the spark arrester. If the spark arrester is worn down, replace it.
3. Reinstall the spark arrester.

6.7 FUEL FILTER MAINTENANCE

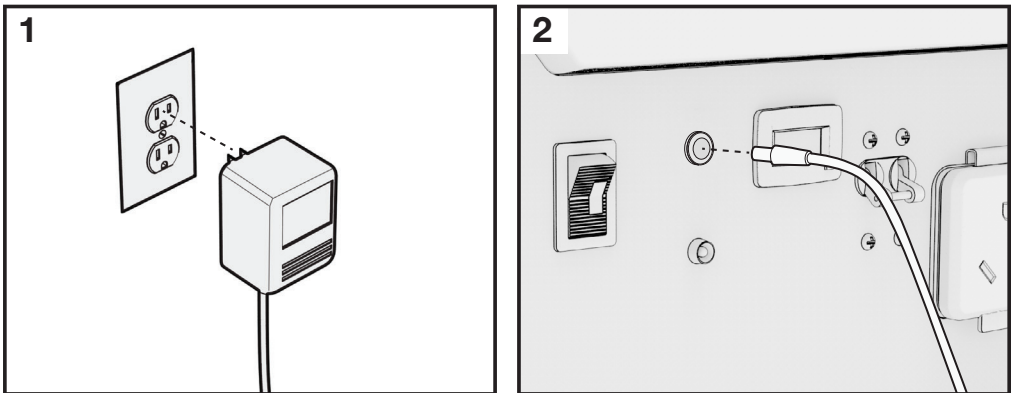


1. Remove the fuel cap and filter.
2. Clean the filter with solvent.
3. Wipe the filter.
4. Reinsert the filter.

6.8 BATTERY CHARGER

If your BG7000H is equipped with an electric start it will also feature a battery charging port (Charger sold separately. You can find the charging cord on our part store at www.benchmark.midlandpowerinc.com or by calling our toll free support number). When storing your generator for an extended period of time the battery will self-discharge, which could cause permanent damage or even complete failure of the battery.

To prolong the battery life, it should be kept above 12.4 Volts (75%) charged while in storage. A fully charged battery will read 12.6-12.7 Volts. To top up, plug the charger into a standard 120V wall outlet and the charging port on your BG7000H (do not charge longer than 10 hours at a time). This will slowly recharge the battery and prolong its life.



1. Plug the charging cord into a 120V wall outlet.
2. Plug the other end into the charging port of the generator.

NOTE

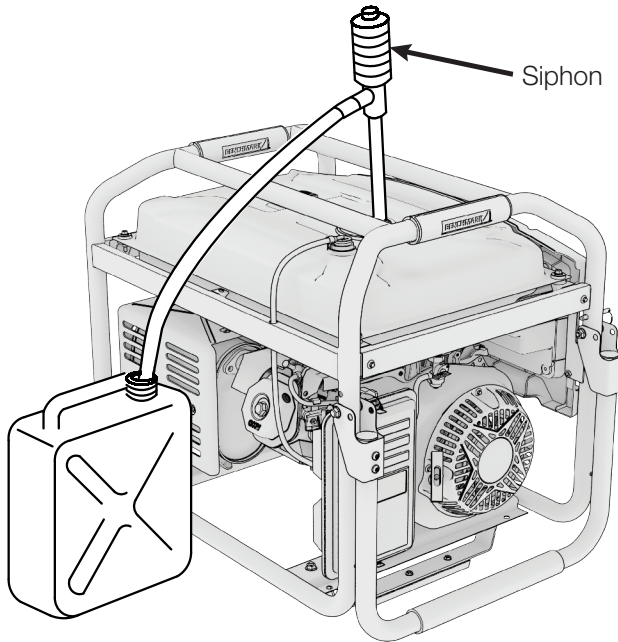
- The onboard electric start battery recharges while the generator is running.
- Do not charge for more than 10 hours at a time.
- Check the voltage with a digital voltmeter and top up the battery every two months while in storage. 12V batteries typically lose 5-15% per month when not in use.

7. TRANSPORTATION & STORAGE

Transporting the Generator

- Do not overfill the fuel tank (No residual fuel on the neck of tank).
- Do not use the generator in the vehicle. The generator should ONLY be used while in a well ventilated area.
- Avoid exposing the generator to prolonged direct sunlight while in an enclosed vehicle. The high temperature inside the vehicle could cause fuel to vaporize resulting in a possible explosion.
- Drain the generator of fuel and oil before being transported on rough roads.

Draining the Fuel Tank



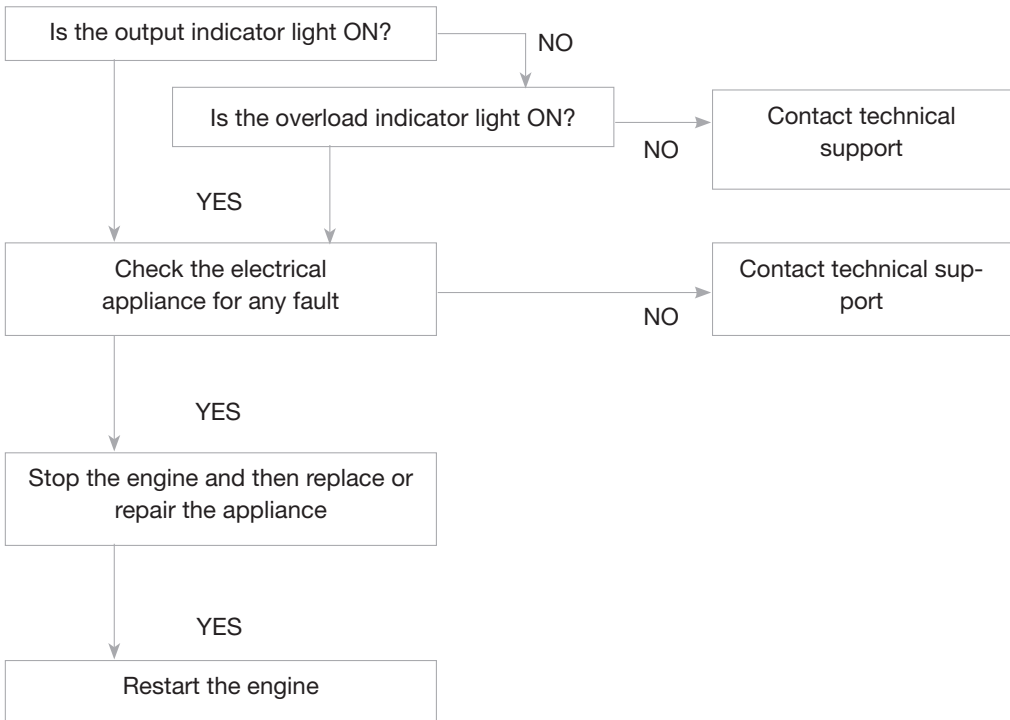
1. Turn OFF the engine. Remove the fuel cap and the debris screen underneath the fuel cap.
2. Empty the fuel tank using a siphon and an approved gasoline container.

Draining the Carburetor

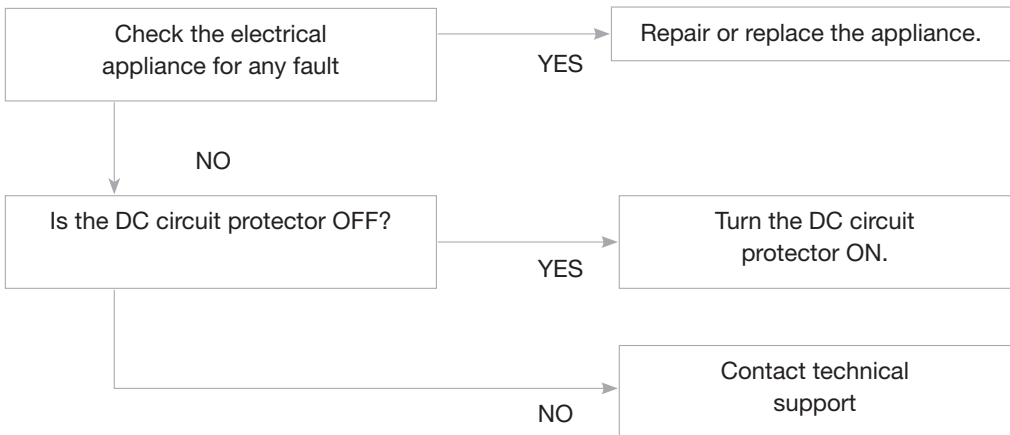
Refer to Honda's engine owner's manual.

8. TROUBLESHOOTING

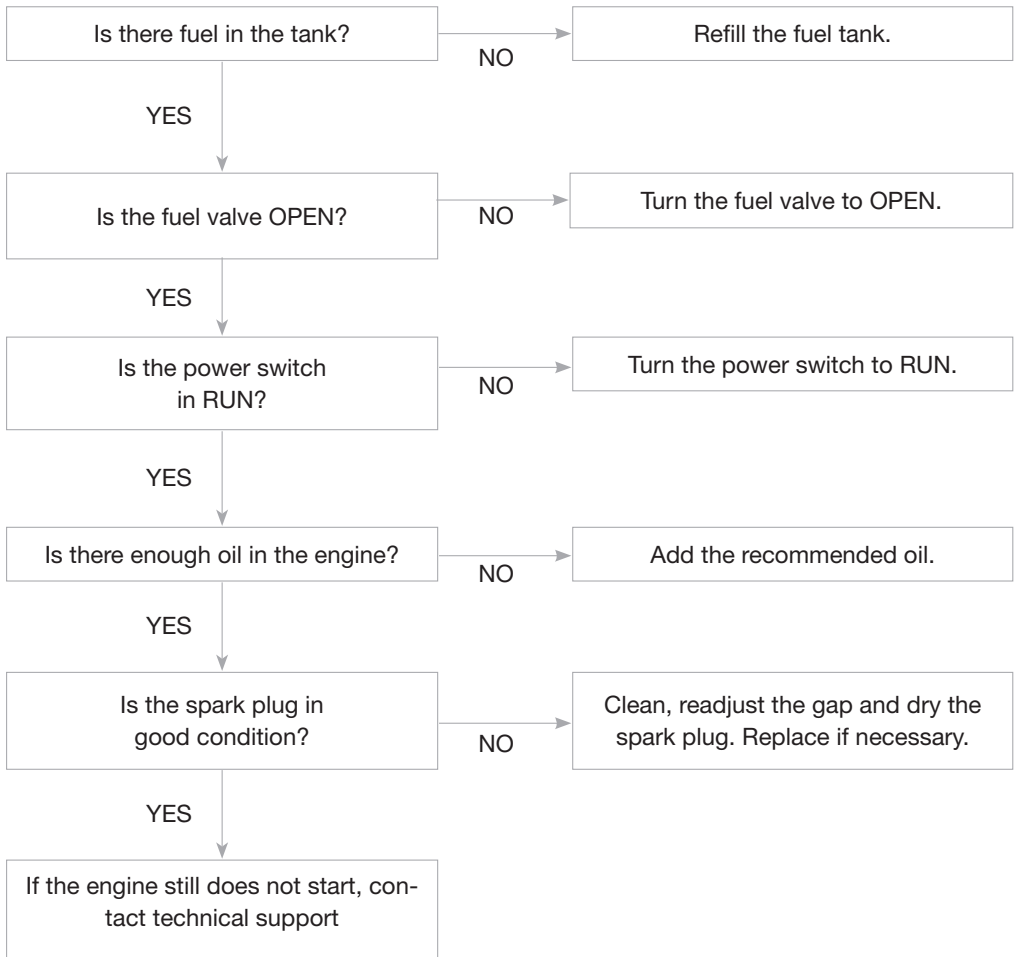
If appliances do not operate:



DC receptacle without any electricity:



If the engine does not start:



9. TECHNICAL SPECIFICATIONS

		BG7000H
GENERATOR	Rated frequency (Hz)	60Hz
	Max AC Output Power (W)	7000W
	Running AC Output Power (W)	6250W
	AC Voltage (V)	120/240V
	Power Factor	1.0
ENGINE	Type	11.7 HP, Single Cylinder, forced air cooling, 4-stroke, OHV
	Displacement	389cc
	Starting mode	Electric Start, Recoil Start
	Max. Output (rpm)	3600
	Fuel tank capacity (Gal)	25L / 6.6 Gal
	Oil capacity	1.1L (10W30)
	Fuel Type	Unleaded gasoline 87+ Octane
UNIT	L x W x H	29.5 x 26 x 26.6"
	Gross Weight	193 lbs
BAT.	Battery Size	12V 14Ah

10. APPENDIX

The standard condition of rated power output:

Altitude: 0m

Ambient temperature: 25°C

Relative humidity: 30%

Factor of Environment Correction:

Altitude (m)	Ambient Temperature°C				
	25	30	35	40	45
0	1	0.98	0.96	0.93	0.90
500	0.93	0.91	0.89	0.87	0.84
1000	0.87	0.85	0.82	0.80	0.78
2000	0.75	0.73	0.71	0.69	0.66
3000	0.64	0.62	0.60	0.58	0.56
4000	0.54	0.52	0.50	0.48	0.46

NOTE:

Relative humidity 60% correction factor C-0.01

Relative humidity 80% correction factor C -0.02

Relative humidity 90% correction factor C-0.03

Relative humidity 100% correction factor C-0.04

Example:

Rated power (PN) 2.8kVA generator (Altitude: 1000m) Ambient temperature: 35°C,

Relative humidity: 80%

$$P=P_n*(C-0.02)=2.8*(0.82-0.02)=2.24\text{kVA}$$

11. LIMITED WARRANTY

This product is distributed by:

Midland Power Inc.

376 Magnetic Drive, Toronto, ON M3J 2C4, Canada

Warranty

Honda engine is warranted by Honda and is not covered by the below Midland Power Inc. Warranty. Contact Honda Canada at (888) 946-6329 or www.honda.ca for more information

Beginning at the time of retail purchase and for the duration of the warranty period Midland Power Inc. (Midland) warrants that Equipment manufactured by it is warranted to be free from defects in material and workmanship. Midland will, at its sole discretion, replace or repair any part(s) which, upon evaluation and testing by Midland or an authorized service center, show a defect in workmanship or material. Valid proof of purchase must be submitted online for registration with Midland, or presented to Midland at time of claim, for warranty to be valid. This warranty is not transferable from the original owner.

Limited Warranty Period:

Non-commercial use:

- Year 1, 2 and 3 - Parts and Labour
- Year 4 and 5 - Parts

Commercial use:

- First 6 Months - Parts and Labour

Replacement parts sold to a consumer or installed by an authorized service center are warranted for a period of 90 days from date of purchase. Labour must be performed by an authorized service center unless given Midland's prior written approval. Midland will not bear any transportation or shipping fees to or from an authorized service center. Service calls, travel charges, overtime, or weekend rates, are not covered.

This warranty does NOT cover:

- a. Any repairs required as a result of any parts not supplied by Midland, and this part is responsible for the failure or malfunction;
- b. Any Equipment modified, altered, disassembled or remodelled;
- c. Any repairs required as a result of a failure to install, maintain, store, transport, or operate the Equipment in accordance with standard practices set out in the user guide;
- d. Damage that occurred after receipt of equipment, not caused by defects in

- workmanship or material;
- e. Normal maintenance services, as outlined in the user guide and intended for a consumer to perform;
- f. Replacement of parts made in connection with normal maintenance services including oils, adhesives, additives, fuel, filters, brushes, belts, lubricants, spark plugs, gaskets, seals, fasteners, wires, tubes, pipes, fittings, wheels, batteries, and other expendables susceptible to natural wear;
- g. Any accessory or attachment.

Any battery supplied with this Equipment is considered a consumable item and is excluded from this warranty. Batteries can be damaged by shock, shorting terminals, heat, acid spillage, neglect, and other factors. It is the customer's responsibility to take great care when handling a battery so no spillage of acid occurs which may cause corrosion.

Midland disclaims any responsibility for loss of time or use of the product, transportation, or towing costs or any other indirect, incidental, or consequential damage, inconvenience or commercial loss.

This warranty is the entire and only warranty given by Midland for Midland products or equipment. No agent or employee is authorized to extend or enlarge this warranty on behalf of Midland by any written or verbal statement or advertisement.

California

The California Air Resources Board and Midland Power Inc. are pleased to explain the emission control system warranty on your Midland Power Inc. engine. In California, new spark-ignited small off-road equipment engines must be designed, built, and equipped to meet the State's stringent anti-smog standards.

Other States, U.S. territories, and Canada

In other areas of the United States and in Canada, your engine must be designed, built, and equipped to meet the U.S. EPA and Environment Canada emission standards for spark-ignited engines at or below 19 kilowatts.

All of the United States and Canada

Midland Power Inc. must warrant the emission control system on your power equipment engine for the period of time listed below, provided there has been no abuse, neglect, or improper maintenance of your power equipment engine. Where a warrantable condition exists, Midland Power Inc. will repair your power equipment engine at no cost to you including diagnosis, parts, and labor.

Your emission control system may include such parts as the carburetor or fuel

injection system, the ignition system, and catalytic converter. Also included may be hoses, connectors, and other emission-related assemblies.

Emission Control System Warranty Parts:

This list applies to parts supplied by Midland Power Inc. and does not cover parts supplied by the equipment manufacturer. Please see the original equipment manufacturer’s emissions warranty for non-Midland Power Inc. parts.

Consumable parts are covered up to a maximum of 30 days.

SYSTEMS COVERED IN WARRANTY	PARTS DESCRIPTION
Fuel Metering	Carburetor assembly (includes starting enrichment system), Engine temperature sensor, Engine control module, Fuel regulator, Intake manifold
Evaporative	Fuel Tank, Fuel Cap, Fuel Hoses, Vapor Hoses, Carbon Canister, Canister Mounting Brackets, Fuel Strainer, Fuel cock, Fuel Pump, Fuel Hose Joint, Canister Purge Hose Joint
Exhaust	Catalyst, Exhaust Manifold
Air Induction	Air filter housing, Air filter element
Ignition	Flywheel magneto, Ignition pulse generator, Crankshaft position sensor, Power coil, Ignition coil assembly, Ignition control module, Spark plug cap, Spark plug
Crankcase Emission Control	Crankcase breather tube, Oil filler cap
Miscellaneous Parts	Tubing, fittings, seals, gaskets, and clamps associated with these listed systems

BENCHMARK^{INC.}

**MIDLAND
POWER** 

Customer Service

Online: www.benchmark.midlandpowerinc.com

E-mail: support@midlandpowerinc.com

Toll Free: 1-877-528-3772

Enjoy!

Be sure to check www.benchmark.midlandpowerinc.com for updates regarding your product.





BENCHMARKTM_{MC}

BG7000H