

# Radley®

# 208 cc 4 Cycle Portable Generator

**3800**  
Starting watts

**3000**  
Running watts

**Owner's Manual**  
**3 Year** limited warranty



Intertek  
5017208

**READ ALL INSTRUCTIONS BEFORE FIRST USE.  
KEEP THIS MANUAL FOR FUTURE REFERENCE.  
KEEP AWAY FROM CHILDREN.**



**WEAR CSA APPROVED  
EYE PROTECTION**



**WEAR EAR  
PROTECTION**



**WEAR A  
FACE MASK**

**PRODUCT SPECIFICATIONS**

Model:	PB3300B
Engine Model:	GB210-2
Style:	OHV, air cooled, four-stroke, single cylinder
Displacement (cm <sup>3</sup> ):	208
Ignition system:	TCI
Start style:	Hand recoil starting
Oil capacity (L):	0.6
Frequency (Hz):	60
Voltage (V):	120
Rated power (kW):	3.0
Maximum power (kW):	3.3
Power factor:	1.0
Insulation rate:	F
Fuel capacity (L):	13
Operating temperature (°C)	-5-40
Max. site altitude of installation (m):	1500
Measured sound pressure level (dB(A)):	≤73
Measurement uncertainty (dB(A)):	≤1.5
Guaranteed sound power level (dB(A)):	≤96
Net weight (kg):	53

**Notes: The gasoline engine with different specifications and configurations may have different parameters and may change at any time without notice.**

**Customer Service/Tech Support**

1-866-206-0888

[www.mecanair.net](http://www.mecanair.net)

## TABLE OF CONTENTS

Product specifications	.....1
Table of contents	.....2
Operating safety	.....3
Unpacking	.....7
Assembly	.....7
Features & controls	.....8
Operating checklist	.....9
Starting the engine	.....12
Connect to electrical devices	.....14
Stopping the engine	.....15
Maintenance	.....17
Maintenance schedule	.....17
Generator maintenance	.....18
Engine maintenance	.....19
Troubleshooting	.....22
Storage and transportation	.....23
Wiring diagram	.....24
Warranty statements	.....25
Parts schematic	.....31
Parts list	.....32

## OPERATING SAFETY



Pay attention to this safety alert symbol. Obey all safety messages that follow this symbol to avoid possible property damage, **INJURY** or **DEATH**. Each safety message is preceded by a safety alert symbol and one of three words, **DANGER**, **WARNING** or **CAUTION**.

### **DANGER**

Indicates a hazardous situation which, if not strictly complied with, will result in substantial property damage, serious injury or DEATH.

### **WARNING**

Indicates a hazardous situation which, if not strictly complied with, may result in property damage, serious injury or DEATH.

### **CAUTION**

Indicates a hazardous situation which, if not strictly complied with, could result in property damage or injury.

---

### **WARNING**

#### **READ THIS MANUAL COMPLETELY BEFORE OPERATING.**

DO NOT operate this generator until you have read ALL safety, operation, and maintenance instructions listed in this manual.

#### **Failure to follow the instructions may result in property damage, INJURY or DEATH.**

The warnings and precautions discussed in this manual cannot cover all possible conditions and situations that may occur. It must be understood by the operator that common sense and caution are factors which cannot be built into this product, but must be supplied by the operator.

### **WARNING**

This generator is intended for residential consumer use only. Air cooled generators cannot be run full time.



**⚠ DANGER****TOXIC FUMES**

Using a generator indoors **CAN KILL YOU IN MINUTES**.

Generator exhaust contains carbon monoxide. This is a poison you cannot see or smell. **NEVER** use inside a home or garage, **EVEN IF** doors and windows are open. Only use **OUTSIDE** and far away from open windows, doors, and vents.

**⚠ WARNING**

**ACID** (For types equipped with battery)

Be careful when using any battery.

Keep away from flame, heat or spark.

Battery will exhaust hydrogen while charging. Only charge a battery in a well-ventilated place.

Avoid spilled battery acid. If contact with skin, wash immediately with clean water.

**⚠ WARNING****FIRE**

Operation of this generator may create sparks that can start fires around dry vegetation. This generator may not be equipped with a spark arresting muffler. If the generator will be used around flammable materials, or on land covered with materials such as agricultural crops, forest, brush, grass, or other similar items, then an approved spark arrester must be installed.

**⚠ WARNING****HOT SURFACE**

Running a generator produces heat. Severe burns can occur on contact.

**DO NOT** touch generator while operating or just after stopping. Avoid contact with hot exhaust gases.

Maintain at least three feet of clearance on all sides to ensure adequate cooling.

Combustible material can catch fire on contact. Maintain at least five feet of clearance from combustible materials.

**⚠ WARNING**

Read the instructions provided and be aware of the safety procedures, set up, shut-down, operation and protective apparel to wear when operating this equipment.

### NEUTRAL FLOATING:

- i) THE GENERATOR (STATOR WINDING) IS ISOLATED FROM THE FRAME AND FROM THE AC RECEPTACLE GROUND PIN.
- ii) ELECTRICAL DEVICES THAT REQUIRE A GROUNDED RECEPTACLE PIN CONNECTION WILL NOT FUNCTION IF THE RECEPTACLE GROUND PIN IS NOT FUNCTIONAL.

### **DANGER**



#### **FIRE OR EXPLOSION**

Gasoline is highly flammable and extremely explosive.

Fire or explosion can cause severe burns or death.

Keep flammable items away while handling gasoline.

Fill fuel tank outdoors and in a well-ventilated area with the generator stopped.

Always wipe off spilled fuel and wait until the fuel has dried before starting the generator.

DO NOT operate the generator with known leaks in the fuel system.

Use proper fuel storage and handling procedures.

DO NOT store fuel or other flammable materials nearby.

Empty the fuel tank before storing or transporting this generator.

Keep fire extinguisher handy and be prepared if a fire starts.

### **WARNING**

Before each use, check for loose or damaged parts, signs of oil or fuel leaks, and any other condition that may affect proper operation. Repair or replace all damaged or defective parts immediately.

Locate all operating controls and safety labels.

Make sure all the safety instructions are in right and working condition. Operate only on level surfaces.

DO NOT expose generator to excessive moisture, dust, or dirt.

Keep all safety guards in place and in proper working order at all times.

DO NOT allow any material to block the cooling slots.

DO NOT allow children or untrained persons to operate the generator.

DO NOT run the generator unattended. Turn off the generator before leaving the area.

### **DANGER**



#### **MOVING PARTS**

Moving parts can cause severe injury. Keep hands and feet away.

DO NOT operate generator with covers, shrouds, or guards removed.

DO NOT wear loose-fitting clothing, dangling drawstrings or items that could become caught. Tie up long hair and remove jewelry.

The moving parts may catch operator's hand, feet, hair or clothes such that will cause traumatic amputation or broken bones, fracture.

NEVER place fingers, hands, or body near the generator when it is running.

**⚠ DANGER**



**ELECTRICAL SHOCK**

This generator produces powerful voltage and the electricity CAN KILL YOU.

This generator must be properly connected to an appropriate ground to help prevent electric shock. Failure to properly ground the generator can result in electrocution, especially if the generator is equipped with a wheel kit.

Consult an electrician for local grounding requirements.

Installation should be performed by a certified electrician.

Improper installation can result in electrical shock and death.

To reduce the risk of electrical shock, DO NOT use electrical cords that are worn, frayed, bare or otherwise damaged.

DO NOT touch bare wires or receptacles.

DO NOT operate the generator in wet weather. Keep the generator dry.

DO NOT handle the generator or electrical cords while standing in water, while barefoot, or while hands or feet are wet.

DO NOT allow unqualified persons or children to operate or service the generator.

DO NOT hook up any generator to a buildings electrical system without the proper use and installation of a transfer switch installed by a qualified electrician.

When using the generator for backup power, notify utility company. Use approved transfer generator to isolate generator from electric utility.

Failure to isolate the generator from power utility can result in death or injury to electric utility workers due to back feed of electrical energy.

DO NOT expose to rain.

**⚠ WARNING**



**KICKBACK**

Rapid retraction of the starter cord will pull hand and arm towards the generator faster than you can let go.

Unintentional startup can result in an accident.

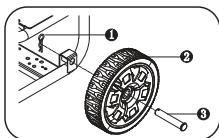
## UNPACKING

### Remove the generator from the shipping carton

1. Place the shipping carton on a solid, flat surface.
2. Carefully cut each corner of the cardboard box from top to bottom. Let each side go flat to the ground.
3. Remove everything from the carton except the generator.

## ASSEMBLY

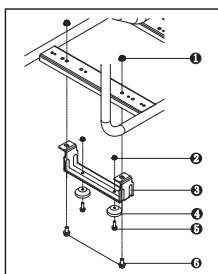
Your generator requires some assembly. If you have any questions regarding the assembly of your generator, please have your model number and serial number ready and consult your local dealer for help.



### 1. Install Wheel Kit

Put wheel stop pin through wheel and mounting lug hole, then secure it with the clamp.

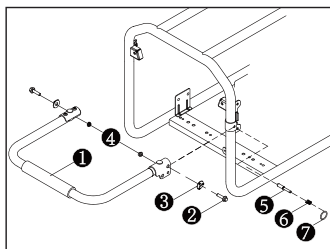
1. Clamp
2. Wheel
3. Wheel stop pin



### 2. Install support bracket

Use supporting bracket bolt to feed through the supporting bracket and the mounting hole on the rack, and then secure with the support bracket nut.

1. Support bracket nut
2. Damping seat nut
3. Support bracket
4. Damping seat
5. Damping seat bolt
6. Support bracket bolt



### 3. Install the handle

Put M8x16 bolt through washer and handle, then secure it to the frame with M8 nut. Put stop pin through spring, frame and the handle, then secure it with pin chain of handle.

- |                    |                   |
|--------------------|-------------------|
| 1. Handle assembly | 5. Wheel stop pin |
| 2. M8x16 bolt      | 6. Spring         |
| 3. Nylon washer    | 7. Pin chain      |
| 4. M8 nut          |                   |

### 3. FEATURES AND CONTROLS



## OPERATING CHECKLIST

### 1. Operating Location

Only use OUTSIDE and place the generator in a well-ventilated area.

Only operate the generator on a flat, level surface and in a clean, dry operating environment.

Operating the generator in the scope of application, and please consult your local dealers if you have any question about the application scope.

#### **DANGER**



#### **TOXIC FUMES**

The exhaust of the generator contains carbon monoxide, an odourless, poisonous gas. Using engine indoors **CAN KILL YOU!**

**NEVER** use inside any building or any kind of enclosure, **EVEN IF** doors and windows are open.

Place the generator in a well-ventilated area and carefully consider wind and air currents when positioning the generator.

#### **High altitude**

This generator may require a high altitude carburetor kit to ensure correct operation at high altitudes. Consult your local dealer for high altitude kit information if you always operate your engine at altitudes above 5,000 feet (1,500 meters).

#### **CAUTION**

Even with carburetor modification, the generator's horsepower will decrease about 3.5% for each 1,000 feet (300 meters) increase in altitude. The effect of altitude on horsepower will be greater than this if no carburetor modification is made.

#### **CAUTION**

Operating the engine at altitude below 5,000 feet (1,500 meters) with modified carburetor may cause the generator to overheat and result in serious engine damage.

### 2. Operating Condition

Check for loose or damaged parts, signs of oil or fuel leaks, and any other condition that may affect proper operation. Repair or replace all damaged or defective parts immediately.

#### **WARNING**

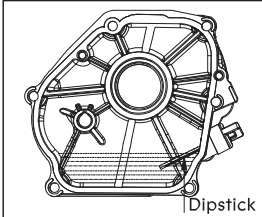
Failing to correct problem(s) before operation could result in property damage, serious injury or DEATH.

Remove any excessive dirt or debris, especially around the muffler and recoil starter.

**DO NOT** move or tip the generator during operation.

Use the generator only for intended uses. If you have questions about intended use, ask your local dealer.

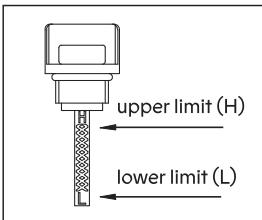
### 3. Engine oil



Place the engine on a level surface with engine stopped. Remove the dipstick and wipe it clean. Reinstall dipstick into tube; rest on oil fill neck, DO NOT thread cap into tube.

Remove the dipstick again and check oil level. Level should be at top of indicator on dipstick. Fill to the upper limit (marked with "H") of the dipstick with the recommended oil if the oil level is low. Reinstall and fully tighten the dipstick. Refer to add oil instruction in **MAINTENANCE** section for more information.

**Oil capacity(rated): See Parameters.**



#### **⚠ WARNING**

Oil is a major factor affecting performance and service life. Use 4-stroke automotive detergent oil recommended in the MAINTENANCE section of this manual.

#### **⚠ WARNING**

This engine is packaged empty and is not filled with oil. Any attempt to crank or start the engine before it has been properly filled with the recommended type and amount of oil may result in engine damage and void your warranty.

#### **⚠ CAUTION**

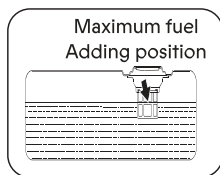
Operate the generator only on level surfaces. The engine is equipped with a low oil sensor (applicable types) that will automatically stop the engine when the oil level falls below the safe limit. To avoid the inconvenience of an unexpected shutdown, fill to the upper limit and check the oil level regularly.

### 4. Engine fuel

With the engine stopped, check the fuel level. Refill the fuel tank if necessary.

#### **⚠ CAUTION**

Pressure can be built up due to fuel vapour. Allow engine to cool at least 2 minutes before removing fuel cap, and loosen the fuel cap slowly to release any pressure in the tank.



Use clean, fresh, regular unleaded gasoline.

Do not fill the fuel when the generator is running indoors or in high temperature.

DO NOT mix oil with gasoline.

Always wipe up any spilled fuel.

Be sure not to fill above the upper limit mark. Always allow room for fuel expansion.

**Fuel capacity (rated): See Parameters.**

### **DANGER**

Do not fill the fuel tank above the upper limit. Overfilling will result in the engine failing or damage to the carbon canister (if equipped) and void your warranty.

### **WARNING**



#### **FIRE OR EXPLOSION**

Gasoline is highly flammable and extremely explosive.

Keep flammable items away while handling gasoline.

Fill fuel tank outdoors and in a well-ventilated area with the generator stopped.

Always wipe off spilled fuel and wait until the fuel has dried before starting the generator.

DO NOT operate the generator with known leaks in the fuel system. Regularly check if there is any leak in the fuel system.

Use proper fuel storage and handling procedures. DO NOT store fuel or other flammable materials nearby.

Keep fire extinguisher handy and be prepared if a fire starts.

NEVER use engine or carburetor cleaner products in the fuel tank or permanent damage may occur.

It is important to prevent gum deposits from forming in essential fuel system parts, such as the carburetor, fuel filter, fuel hose or tank during storage. Also, experience indicates that alcohol-blended fuels (called gasohol, ethanol or methanol) can attract moisture, which leads to separation and formation of acids during storage.

Acidic fuel can damage the fuel system of the generator while in storage. Be sure to review the instructions given in "Storage" section.

Gasoline/Alcohol blends: up to 10% alcohol, 90% unleaded gasoline by volume is approved as a fuel. Other gasoline/alcohol blends are not approved.

Effects of old, stale or contaminated fuel are not warrantable.

### **CAUTION**

To minimize gum deposits in your fuel system and to insure easy starting, do not use gasoline left over from the previous season.

### **CAUTION**

Pressure can build up in the fuel tank. Allow the generator to cool for at least two minutes before removing fuel cap.

Loosen the fuel cap slowly to relieve any pressure in the tank.



## 5. Electrical devices

Disconnect all electrical devices from the generator and switch off the AC circuit breaker before starting the engine.

The generator may be hard to start with electrical devices.

The electrical devices that are connected cannot go over the max limit. See the specific limitations for connected electric devices.

## 6. Grounding

The generator must be properly connected to an appropriate ground. It helps prevent electrical shock if a ground fault condition exists in the generator or in connected electrical devices, especially when the unit is equipped with a wheel kit. Proper grounding also helps dissipate static electricity, which often builds up in ungrounded devices.

### DANGER

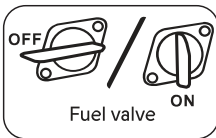
#### Electrical Shock

Failure to properly ground the generator can result in electric shock.

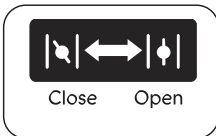
A grounding terminal has been provided on the frame of the generator. For remote grounding, connect a length of heavy gauge (4 mm<sup>2</sup>) copper wire between the generator ground terminal and a copper rod driven into the ground.

Local electrical codes may also require proper grounding of the unit. We strongly recommend that you consult with a qualified electrician for grounding requirements in your area.

## STARTING THE ENGINE



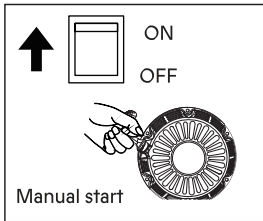
1. Perform operating checklist.
2. Turn fuel valve to the "ON" position.



3. Pull the choke valve switch to "CLOSE" position.

### CAUTION

Choke plate should be set in a different width due to temperature and other factors.



4. **Manual start:** Turn the switch to “**RUN**” position. With the choke switch adjusted to the open position, seize the starter handle and slowly pull until there is a sense of resistance and then quickly pull to start.

### **WARNING**

#### KICKBACK

Rapid retraction of the starter cord will pull hand and arm towards the engine faster than you can let go.

Unintentional startup can result in accidents.

If the starter fails to start the engine, immediately turn off the starter. Don't attempt to restart the engine before the failure cause is identified. Don't restart the engine by replacing the other storage battery without authorization.

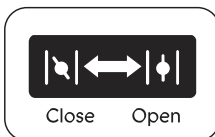
### **CAUTION**

If the engine fails to start after attempting 3 times or cuts out, inspect and ensure that the generator is placed on a horizontal surface and enough engine oil is injected.

During starting, don't keep the starting switch to the “ON” position for more than 5 seconds, otherwise it is possible to damage the motor. If the unit fails to start the first time, restart after about 10 seconds. After the unit is used for a period, if the starting speed of the motor decreases, please replace the storage battery.

During the operation of the unit, the storage battery supplies power for the solenoid valve of the carburetor. For this, when the unit is turned off, make sure that the starting switch is in “OFF” position, otherwise the storage battery voltage is reduced due to the operating solenoid valve of the carburetor, impacting on starting for the next time.

While generator is running, routinely inspect the engine oil. See maintenance section for recommended maintenance period.



5. When the generator operates stably, pull the choke valve to “OPEN” position.

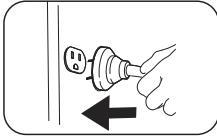
6. The generator may be normally loaded.

### **WARNING**

Connect the output terminal of the generator with the electric equipment. Don't start or stop the engine when the electric equipment is in “ON” status.

## CONNECT TO ELECTRICAL DEVICES

Inspect power cord for damage before using. There is a hazard of electrical shock from crushing, cutting or heat damage.



### ELECTRICAL SHOCK

To reduce the risk of electrical shock, **DO NOT** use electrical cords that are worn, frayed, bare or otherwise damaged. **DO NOT** touch bare wires or receptacles. **DO NOT** handle the generator or electrical cords while standing in water, while barefoot, or while hands or feet are wet.

1. Allow the engine to stabilize and warm up for a few minutes after starting.
2. Make sure the electrical device is in the "**OFF**" position, and the load current is not higher than the maximum withstanding current of a single socket.

### CAUTION

If the current of a single load is higher than the maximum withstanding current of a single socket, please connect the load to the terminal.

### Bearing capacity

### WARNING

Exceeding the generator's capacity can damage the generator and/or electrical devices connected to it.

You must make sure your generator can supply enough rated (running) and (starting) watts for the electrical devices at the same time. Follow these simple steps to calculate the running and starting watts necessary for your purposes.

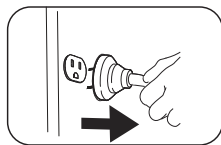
1. Count the electrical devices you will power at the same time.
2. The amount of power you need to run the devices is the total rated (running) watts of these items.
3. Starting power is the power needed shortly when electric devices start. Since not all devices start at the same time, starting power can be estimated by the max power of all devices plus the total power counted in step 2.

## WATTAGE REFERENCE CHART

Electric equipment		Rate power (W)
Appliances	Tablet computer 27"	120
	Energy saving lamp	5-50
	Electric cooker	1000
	Computer	400
	Refrigerator	50
	Washing machine	250
	Electric Fan	50
	Air conditioner 2HP	1600
Power tools	Electric welding machine	2500
	Electric hammer	1000
	Water pump	800

### **WARNING**

You must isolate the generator from electric utility by opening the electrical system's main circuit breaker or main switch if the generator is used for backup power. Failure to isolate the generator from the power utility may result in injury or death due to back feed of electrical energy.

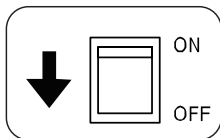


### **STOPPING THE ENGINE**

1. Remove all the load on the generator.
2. Remove the plug of all electric equipment from the generator panel.

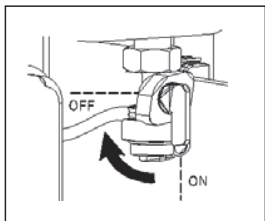
### **WARNING**

NEVER stop the engine with electrical devices connected and with the connected devices turned "ON".



3. Allow the generator to run at no load for a few minutes to stabilize internal temperatures of the engine and generator.

4. Turn off the flameout switch (turn the engine switch to “**OFF**” position).



5. Turn the fuel valve to “OFF” position.

## MAINTENANCE

It is the operator's responsibility to complete all scheduled maintenance in a timely manner. Correct any issue before operating the generator. Always follow the inspection and maintenance recommendations and schedules in this manual.

Before servicing the generator, stop the generator, disconnect all electric devices and battery (if equipped) and allow the generator to cool down.

### **DANGER**



Accidental starts can cause severe injury or death. Remove the ground spark plug wire before performing any service.

### **WARNING**

Improper maintenance or failure to correct a problem before operating the unit can cause a malfunction and result in property damage, serious injury or DEATH. Improper maintenance will void your warranty.

### **CAUTION**

The filter element may contain PAHs; PAHs are harmful to your health. Please wear gloves for protection during air filter maintenance.

## MAINTENANCE SCHEDULE

Follow the service intervals indicated in the chart below. Service your generator more frequently when operating in adverse conditions.

Contact your local service dealer for your generator or engine maintenance needs.

## MAINTENANCE CHART

		Each time before use	The first month or 10 hours <sup>2</sup>	Every three months or 50 hours <sup>2</sup>	Every six months or 100 hours <sup>2</sup>	Every year or 300 hours <sup>2</sup>
Engine oil	Inspection	●				
	Replacement		●		●	
Air filter	Inspection	●				
	Cleaning			● <sup>3</sup>		
Spark plug	Inspection & Adjustment				●	
	Replacement					●
Spark extinguisher <sup>1</sup>	Cleaning				●	
Idle speed	Inspection & Adjustment					● <sup>4</sup>
Valve clearance	Inspection & Adjustment					● <sup>4</sup>
Carbon canister <sup>1</sup>	Inspection	Every two years <sup>4</sup>				
Low permeability oil tube <sup>1</sup>	Inspection	Every two years <sup>4</sup>				
Oil tube	Inspection	Every two years <sup>4</sup>				

### NOTE:

1. Applicable types (if available).
2. Before each season and after (whichever comes first).
3. Service more frequently under severe, dusty, dirty conditions.
4. To be performed by knowledgeable, experienced owners or the authorized dealer.

## GENERATOR MAINTENANCE

Use a damp cloth to clean exterior surfaces of the generator. Use a soft brush to clean the dirt and oil.

Use an air compressor (25 PSI) to clear dirt and debris from the generator.

Inspect all air vents and cooling slots to ensure that they are clean and unobstructed.

### WARNING

DO NOT use water to clean the generator. Water can enter the generator through the cooling slots and damage the generator windings.

## ⚠ WARNING

DO NOT modify the generator in any way.

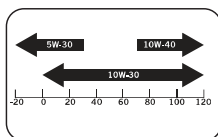
DO NOT tamper with or modify the speed regulator. The generator supplies correct rated frequency and voltage when running at factory settings.

Tampering or modifying the factory settings will void your warranty.

## ENGINE MAINTENANCE

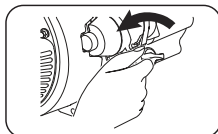
### Engine oil

SAE 10W-30 is recommended for general, all-temperature use. Other viscosities shown in the chart may be used when the average temperature in your area is within the indicated range.



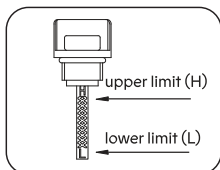
### Ambient temperature

**Oil capacity (rated): See parameters.**



### Add oil

1. Place the engine on a level surface.
2. Remove the dipstick and wipe it clean.
3. Add recommended oil to the upper limit.
4. Fully tighten the dipstick.
5. Dispose of used oil at an approved waste management facility.



## ⚠ CAUTION

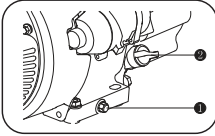
### Oil level check

Reinstall dipstick into tube; rest on oil fill neck.

## ⚠ CAUTION

Change oil when the engine is warm from operation.





### Change oil

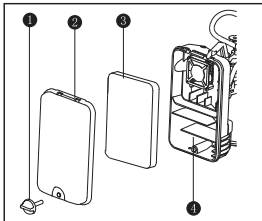
1. Place the engine on a level surface.
2. Clean area around dipstick and drain plug.
3. Remove oil dipstick.

1. Oil drain plug 2. Dipstick

4. Remove the oil drain plug and allow the oil to drain completely.
5. Reinstall and fully tighten the oil drain plug.
6. Add recommended oil to the upper limit (see add oil instruction above).
7. Reinstall and fully tighten the dipstick.
8. Dispose of used oil at an approved waste management facility.

### **⚠** WARNING

The engine is not filled with oil at the factory. If operating the unit before it has been properly filled with the recommended type and amount of oil may result in engine damage and void your warranty.



### Air filter

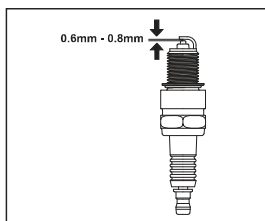
1. Loosen the filter bolt and remove the cover of the air filter.

1. Filter bolt
2. Air filter cover
3. Foam filter element
4. Air filter body

2. Remove the foam filter element.
3. Wash in liquid detergent and warm water.
4. Squeeze thoroughly dry in a clean cloth.
5. Saturate in clean engine oil.
6. Squeeze in a clean absorbent cloth to remove all excess oil.
7. Place the filter in the assembly.
8. Fasten the air filter cover with the bolt, and mount it back to the air filter body

### **⚠** WARNING

DO NOT run the engine without the air filter, or serious damage can result or it can pose serious danger.



### Spark plug

1. Clean any dirt from the spark plug cap and spark plug base.
2. Remove the spark plug cap.
3. Using socket wrench to loosen and remove the spark plug.
4. Inspect the spark plug and spark plug washer, if it is broken or worn, replace it with a new one. Clean

the spark plug with a wire brush if you are reusing it.

5. Check spark plug gap. Carefully bend side electrode to adjust the gap if necessary.

**Spark plug gap: 0.6mm -0.8mm.**

6. Carefully thread the plug into the engine **by hand**.
7. After the spark plug is seated, use spark plug wrench to tighten the plug.

**Spark Plug Tighten Torque:15-20 N.m**

8. Attach the spark plug wire to the plug.

### **⚠ WARNING**

Only use recommended spark plug or equivalent. DO NOT use spark plugs that have improper heat range.

### **Speed**

The speed has been pre-set at the factory and should rarely require readjustment. Consult your local authorized dealer for such needs.

### **⚠ WARNING**

Unauthorized adjustment will damage your engine and/or your electrical devices and void your warranty.

### **Adjustment**

There is no other service and/or adjustment needed for your generator.

Unauthorized adjustments or tampering can damage your generator and electrical devices and will void your warranty. Contact your local authorized dealer for such needs.

## TROUBLESHOOTING

Failure	Trouble	Solution
Engine won't start.	Engine switch is "OFF".	Turn engine switch to the "ON" position.
	No fuel.	Fill tank per instructions in this manual.
	Inadequate engine oil.	Check oil level. This engine is equipped with a low oil sensor. The engine cannot be started unless the oil level is above the prescribed lower limit.
	No ignition.	Remove the spark plug cap. Clean any dirt around the plug base, and then remove the spark plug. Install the spark plug in the plug cap. Turn the engine switch to "ON". Grounding the electrode to any engine ground, pull the recoil starter to see if sparks jump across the gap. If there is no spark, replace the plug.  Reinstall the plug and start engine according to instructions in this manual.  Consult Customer Service if necessary.
Generator has no output.	Breaker trip.	Reset circuit breakers.
	Inadequate cord sets or extension cords.	Check cord sets or extension cords capabilities in section controls; cable size in this manual.  Consult Customer Service if necessary.

## STORAGE AND TRANSPORTATION

### Storage

The generator should be started at least once every 2 weeks and allowed to run for at least 20 minutes. Follow the instructions below for longer term storage if the generator will be out of service for 2 months or more.

### DANGER

#### Fire or explosion

Gasoline is highly flammable and extremely explosive. Empty the fuel tank and shut off fuel valve before storing or transporting this generator.

1. Allow the generator to cool completely before storage.
2. Clean the generator according to the instructions in the maintenance section.
3. Drain all fuel completely from the fuel hose and carburetor to prevent gum from forming.
4. Turn off the fuel supply at the fuel valve.
5. Change the oil.
6. Remove the spark plug and pour about 15 ml of oil into the cylinder. Crank the engine slowly to distribute the oil and lubricate the cylinder.
7. Clean the generator according to the instructions in the maintenance section.
8. Store the unit in a clean, dry area out of direct sunlight.

### Transportation

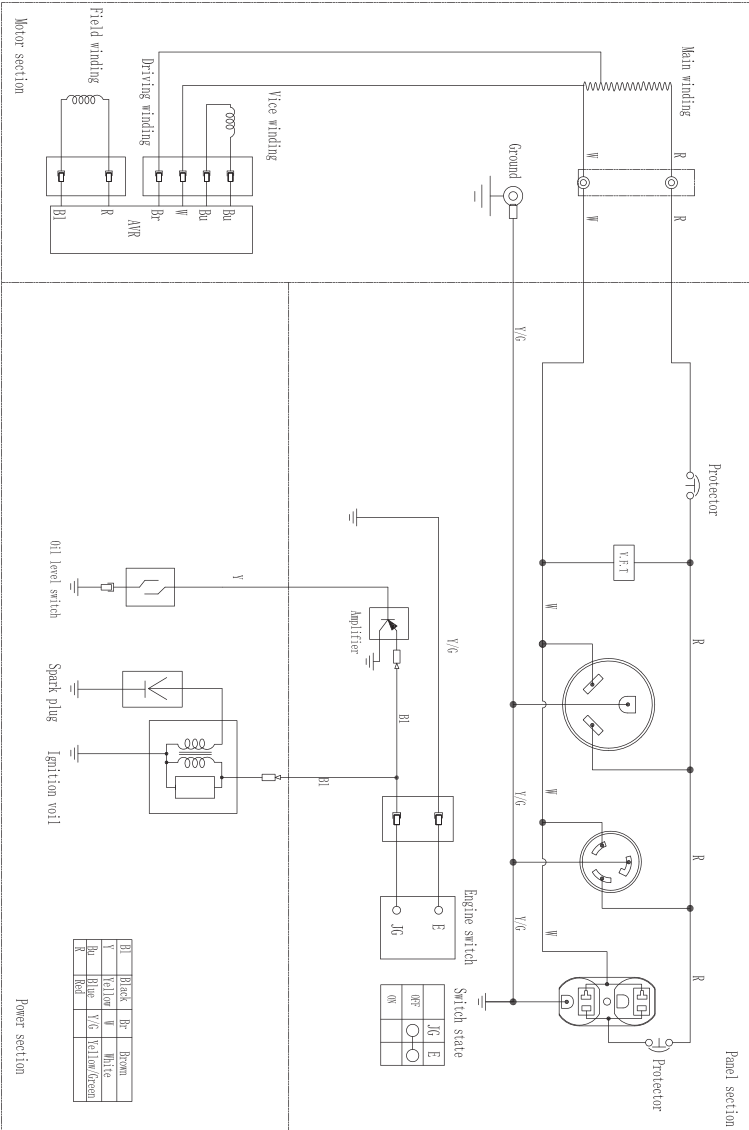
To prevent fuel spillage when transporting or during temporary storage, the generator should be secured upright in its normal operating position, with the engine switch OFF. The fuel valve lever should be turned OFF.

### WARNING

#### When transporting:

Do not overfill the tank. Do not operate the generator while it is on the vehicle. Take the generator off the vehicle and use it in a well-ventilated place. Avoid a place exposed to direct sunlight when putting the generator on a vehicle. If the generator is left in an enclosed vehicle for many hours, high temperature inside the vehicle could cause fuel to vaporize resulting in a possible explosion. Do not drive on a rough road for an extended period with the generator on board. If you must transport the generator on a rough road, drain the fuel from the generator beforehand.

## WIRING DIAGRAM



## **WARRANTY STATEMENTS**

### **FEDERAL EXHAUST AND EVAPORATIVE EMISSIONS CONTROL WARRANTY STATEMENT**

#### **YOUR WARRANTY RIGHTS AND OBLIGATIONS**

The United States Environmental Protection Agency (EPA), and MECANAIR INC. (MECANAIR) are pleased to explain the exhaust and evaporative emissions (“emissions”) control system’s warranty on your 2020 small off-road engine or equipment (SORE). New equipment that use small off-road engines must be designed, built, and equipped to meet the State’s stringent anti-smog standards. MECANAIR must warrant the emissions control system on your SORE for the periods of time listed below provided there has been no abuse, neglect or improper maintenance of your small off-road engine or equipment leading to the failure of the emissions control system.

Your emissions control system may include parts such as the carburetor or fuel-injection system, the ignition system, catalytic converter, fuel tanks, fuel lines (for liquid fuel and fuel vapors), fuel caps, valves, canisters, filters, clamps and other associated components. Also included may be hoses, belts, connectors, and other emission-related assemblies.

Where a warrantable condition exists, MECANAIR will repair your SORE at no cost to you including diagnosis, parts and labor.

#### **MANUFACTURER’S WARRANTY COVERAGE:**

This exhaust and evaporative emissions control system on your SORE is warranted for two years. If any emissions-related part on your SORE is defective, the part will be repaired or replaced by MECANAIR.

#### **OWNER’S WARRANTY RESPONSIBILITIES:**

As the SORE owner, you are responsible for performance of the required maintenance listed in your owner’s manual. MECANAIR recommends that you retain all receipts covering maintenance on your SORE, but MECANAIR cannot deny warranty coverage solely for the lack of receipts or for your failure to ensure the performance of all scheduled maintenance.

As the SORE owner, you should however be aware that MECANAIR may deny your warranty coverage if your SORE or a part has failed due to abuse, neglect, or

improper maintenance or unapproved modifications.

You are responsible for presenting your SORE to a MECANAIR distribution center or service center as soon as the problem exists. The warranty repairs shall be completed in a reasonable amount of time, not to exceed 30 days.

If you have any questions regarding your warranty rights and responsibilities, you should contact **MECANAIR INC.** at **1-866-206-0888** or at **www.mecanair.net**

#### **DEFECTS WARRANTY REQUIREMENTS:**

(a) **Applicability.** This section applies to emissions control systems on small off-road engines or equipment that use small off-road engines subject to the emission standards in this Article. The warranty period begins on the date the engine or equipment is delivered to an ultimate purchaser.

(b) **General Emissions Warranty Coverage.** The engine or equipment must be warranted to the ultimate purchaser and any subsequent owner that the emissions control system when installed was:

(1) Designed, built, and equipped so as to conform with all applicable regulations; and

(2) Free from defects in materials and workmanship that causes the failure of a warranted part for a period of two years.

(c) **The warranty on emissions-related parts will be interpreted as follows:**

(1) Any warranted part that is not scheduled for replacement as required maintenance in the written instructions furnished with each new engine or equipment must be warranted for the warranty period defined in subsection (b)(2). If any such part fails during the period of warranty coverage, it must be repaired or replaced by MECANAIR according to subsection (4) below. Any such part repaired or replaced under the warranty must be warranted for a time not less than the remaining warranty period.

(2) Any warranted part that is scheduled only for regular inspection in the written instructions furnished with each new engine or equipment must be warranted for the warranty period defined in subsection (b)(2). A statement in such written instructions to the effect of "repair or replace as necessary" shall advise owners of

the warranty coverage for emissions related parts. Replacement within the warranty period is covered by the warranty and will not reduce the period of warranty coverage. Any such part repaired or replaced under warranty must be warranted for a time not less than the remaining warranty period.

(3) Any warranted part that is scheduled for replacement as required maintenance in the written instructions furnished with each new engine or equipment must be warranted for the period of time prior to the first scheduled replacement point for that part. If the part fails prior to the first scheduled replacement, the part must be repaired or replaced by the manufacturer according to subsection (4) below. Any such part repaired or replaced under warranty must be warranted for a time not less than the remainder of the period prior to the first scheduled replacement point for the part.

(4) Repair or replacement of any warranted part under the warranty provisions of this article must be performed at no charge to the owner at a warranty station.

(5) Notwithstanding the provisions of subsection (4) above, warranty services or repairs must be provided at distribution centers that are franchised to service the subject engines or equipment.

(6) The owner must not be charged for diagnostic labor that leads to the determination that a warranted part is in fact defective, provided that such diagnostic work is performed at a warranty station.

(7) Throughout the emissions control system's warranty period set out in subsection (b)(2), MECANAIR must maintain a supply of warranted parts sufficient to meet the expected demand for such parts and must obtain additional parts if that supply is exhausted.

(8) Manufacturer-approved replacement parts that do not increase the exhaust or evaporative emissions of the engine or evaporative emission system must be used in the performance of any warranty maintenance or repairs and must be provided without charge to the owner. Such use will not reduce the warranty obligations of MECANAIR.

(9) The use of add-on or modified parts may be grounds for disallowing a warranty claim made in accordance with this Article. MECANAIR will not be liable under this Article to warrant failures of warranted parts caused by the use of an add-on or modified part.

(10) MECANAIR shall provide any documents that describe MECANAIR's warranty



procedures or policies within five working days of request by the Executive Officer.

**(d) A list of all emissions warranty parts must be included with each new engine or equipment subject to this Article. The emissions warranty parts list shall include all parts whose failure would increase exhaust or evaporative emissions, and contains the following parts (if applicable):**

(1) Fuel Metering System

- Carburetor and internal parts (and/or pressure regulator or fuel injection system).
- Air/fuel ratio feedback and control system.
- Cold start enrichment system.

(2) Air Induction System

- Controlled hot air intake system.
- Intake manifold.
- Air filter.

(3) Ignition System

- Spark Plugs.
- Magneto or electronic ignition system.
- Spark advance/retard system.

(4) Exhaust Gas Recirculation (EGR) System

- EGR valve body, and carburetor spacer if applicable.
- EGR rate feedback and control system.

(5) Air injection System

- Air pump or pulse valve.
- Valves affecting distribution of flow.
- Distribution manifold.

(6) Catalyst or Thermal Reactor System

- Catalytic converter.
- Thermal reactor.
- Exhaust manifold.

(7) Particulate Controls

- Traps, filters, precipitators, and any other device used to capture particulate emissions.

(8) Miscellaneous items Used in Above Systems

- Vacuum, temperature, and time sensitive valves and switches.
- Electronic controls.

- Hoses, belts, connectors, and assemblies.
- (9) Evaporative Controls
  - Fuel Tank
  - Fuel Cap
  - Fuel Lines (for liquid fuel and fuel vapors)
  - Fuel Line Fittings
  - Clamps
  - Pressure Relief Valves
  - Control Valves
  - Control Solenoids
  - Electronic Controls
  - Vacuum Control Diaphragms
  - Control Cables
  - Control Linkages
  - Purge Valves
  - Gaskets
  - Liquid/Vapor Separator
  - Carbon Canister
  - Canister Mounting Brackets
  - Carburetor Purge Port Connector

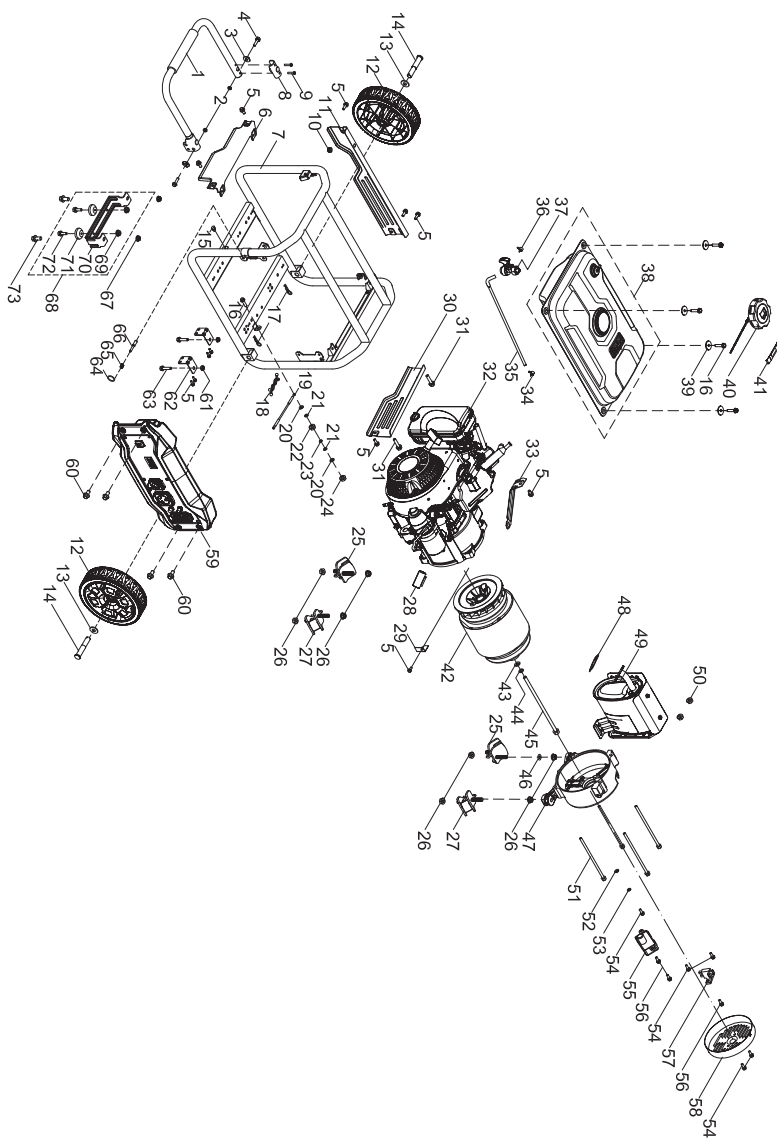
**Note: Any other warranty statements apply to engines or equipment units shall not limit the emissions warranty period (two years) or its applicability to subsequent owners after the ultimate purchaser.**

## **WARRANTY**

### **RADLEY PORTABLE GENERATOR WARRANTY**

If this Radley tool fails due to a defect in material or workmanship within three years from the date of purchase, return it to any Home Hardware store with the original bill of sale for exchange. This warranty does not include expendable parts including but not limited to blades, brushes, belts, light bulbs and/or batteries. This warranty covers defects in material or workmanship only. It does not cover normal wear and tear, failure due to abuse/misuse, or defects caused by careless or accidental mishandling. If this Radley product is used for commercial or rental purposes, this warranty does not apply.

## PARTS SCHEMATIC



## PARTS LIST



**WARNING:** When servicing, use only original equipment replacement parts. The use of any other parts may create a safety hazard or cause damage to the portable generator.

Any attempt to repair or replace electrical parts on this portable generator may create a safety hazard unless repairs are performed by a qualified technician.

Customer Service /Tech Support 1-866-206-0888.

No.	Description	Qty.
1	Handle	1
2	Nut M8	2
3	Washer	2
4	Bolt, M8x16	2
5	Bolt, M6x12	12
6	Across Bar	1
7	Frame Assembly	1
8	Handle Connecting Piece	1
9	Screw, M6x30	2
10	Damping Pad	1
11	Decorative Sheet, Rear	1
12	Tire	2
13	Washer, $\phi$ 16x2.5x $\phi$ 30	2
14	Wheel Shaft	2
15	Damping Pad	1
16	Bolt, M6x25	5
17	Circlip	2
18	Clamp	1
19	Earth Wire	1
20	Washer, $\phi$ 6	2
21	Washer, $\phi$ 6	2
22	Nut M6	1
23	Washer, $\phi$ 6	1
24	Nut M6	1

No.	Description	Qty.
25	Damping Pad	2
26	Nut, M8	8
27	Damping Pad	2
28	Clip	1
29	Support Block	1
30	Across Bar	1
31	Bolt, M6x30	2
32	Engine	1
33	Air Filter Bracket	1
34	Clamp	1
35	Clamp	1
36	Clamp	1
37	Fuel Switch	1
38	Fuel Tank	1
39	Washer, $\phi$ 6.5x2x $\phi$ 25	4
40	Fuel Cap	1
41	Oily Sense Clip	1
42	Alternator	1
43	Washer, $\phi$ 8	1
44	Washer, $\phi$ 8	1
45	Bolt, M8x1x220	1
46	Washer, $\phi$ 8x2x $\phi$ 24	1
47	Rear Bracket	1
48	Gasket, Muffler	1
49	Muffler	1
50	Nut, M8	2

<b>No.</b>	<b>Description</b>	<b>Qty.</b>
51	Bolt, M6x165	4
52	Washer, $\phi$ 5	1
53	Washer, $\phi$ 5	1
54	Bolt, M5x14	5
55	Voltage Regulator	1
56	Bolt, M5x18	3
57	Brush	1
58	End Cover	1
59	Control Panel	1
60	Bolt, M6x15	4
61	Nut, M8	2
62	Reinforcement Block	2
63	Bolt, M8x35	2
64	Chain	1
65	Spring	1
66	Pin	1
67	Nut, M8	2
68	Support Base	1
69	Nut, M6	2
70	Support Base	1
71	Damping Pad	2
72	Bolt, M6x18	2
73	Bolt, M8x16	2