

BENCHMARK™

BM3775



MANUAL

BENCHMARK[™]

**MIDLAND
POWER** 

This product is supported by **Midland Power**. Contact us directly for assistance and warranty help. Do not return this product to store.

You must register online for your warranty to be valid. It only takes a minute, do it now while you still have your purchase receipt.

Register Your Product Online

[www.benchmark.midlandpowerinc.com/
register-warranty](http://www.benchmark.midlandpowerinc.com/register-warranty)



Support for your product is available online, including parts, service center locations, and live expert advice.

Visit us online at

www.benchmark.midlandpowerinc.com



Or call us anytime at **1-877-528-3772**.

Thanks for choosing the BEM3775!

You're excited to get started, we'll keep this brief.

READ THIS ENTIRE GUIDE BEFORE USING THIS PRODUCT AND SAVE FOR LATER USE.

This user guide contains important instructions including safety, setup, operation, and maintenance that must be followed. All information in this guide is based on information available at the time of print. This guide or revised editions can be found on our website for download. No part of this publication may be reproduced without written permission.



TABLE OF CONTENTS

1. Safety	1
2. Learn More About Your Mower	5
2.1 Component Identification	5
2.2 Control Functions	6
2.3 Make Sure You Have Everything	8
3. Getting Started	9
3.1 Unpacking	9
3.2 Connecting the Battery	10
3.3 Installing the Seat	11
3.4 Installing the Steering Column	12
3.5 Charging the Product	13
4. Starting the Riding Mower	15
4.1 Start the Riding Mower	16
4.2 Stop the Riding Mower	18
4.3 Reverse Mowing Operation (RMO)	19
5. Using Your Riding Mower	20
5.1 Installing the Mulch Cover	20
5.2 Adjusting the Cutting Deck Height	21
5.3 Setting the Cruise Control	22
5.4 Slope Operation	23
5.5 Mowing Tips	24
6. Maintenance	26
6.1 Maintenance Schedule	27
6.2 Removing the Cutting Deck	28
6.3 Replacing Cutting Blades	30
6.4 Tire Air Pressure	31
6.5 Replacing Tires	31
6.6 Adjusting the Brakes	32
6.7 Replacing Batteries	33
7. Transportation & Storage	35
8. Troubleshooting	37
9. Technical Specifications	40
10. Limited Warranty	41

1. SAFETY

WARNING!

FOLLOW THESE INSTRUCTIONS CAREFULLY!

Before use, read and understand the installation and operation instructions in this manual to become familiar with how this riding mower works. Failure to follow all instructions listed below may result in electric shock, fire, and/ or serious injury.

1.1 OPERATOR SAFETY

WARNING!

- Properly clean and maintain the equipment.
- Operate the riding mower according to instructions for safe and dependable service.
- Before operating, read the user guide carefully. Otherwise, personal injuries or equipment damage may result.
- NEVER run the equipment in an enclosed area.
- Keep children, pets and machinery with rotating parts away during operation.
- DO NOT operate machine in explosive atmospheres, such as in the presence of flammable liquids, gases or dust.
- DO NOT operate riding mower in rain or snow.
- Use personal protective equipment and always wear eye protection.
- Keep your hair and clothing away from moving parts.
- Ensure the switch is in the OFF position before connecting to power source and/or battery pack, picking up or carrying the tool.
- Know how to stop the riding mower quickly and understand operation of all the controls. NEVER permit anyone to operate the generator without proper instructions.
- DO NOT operate the riding mower if damaged. Have the machine repaired before use.
- Keep handles and grasping surfaces dry, clean, and free from oil and grease.
- NEVER carry passengers or children, even when the blades have stopped.
- Keep hands and feet away from the cutting area, which is located under the mower deck and inside the side discharge chute. Keep clear of the side discharge chute opening at all times.

- NEVER leave a running product unattended. Always turn off the blades, engage the parking brake, stop the motor, and remove the start key before dismounting.
- Stop the blade when crossing gravelly surfaces to avoid discharging gravel and rocks.
- DO NOT mow in reverse unless absolutely necessary. Always look down and behind before and while reversing.

1.2 BATTERY AND CHARGER SAFETY

⚠ WARNING!

Risk of fire, explosion, or burns. DO NOT charge battery packs that show signs of leaks. Dispose of them properly.

- Recharge only with the charger specified by the manufacturer.
- Use machine only with specifically designated battery packs. Use of any other battery packs may create a risk of injury and fire.
- NEVER touch both terminals with metal objects and body parts as short circuit may result.
- Under abusive conditions, liquid may be ejected from the battery; avoid contact. If contact accidentally occurs, flush with water. If liquid contacts eyes, additionally seek medical help. Liquid ejected from the battery may cause irritation or burns.
- DO NOT use a battery pack or tool that is damaged or modified. Damaged or modified batteries may exhibit unpredictable behaviour resulting in fire, explosion or risk of injury.
- DO NOT expose a battery pack or tool to fire or excessive temperature. Exposure to fire or temperature above 60°C may cause explosion. Charging improperly or at temperatures outside the specified range may damage the battery and increase the risk of fire.
- DO NOT attempt to destroy or disassemble battery pack or remove any of its components.
- NEVER service damaged battery packs. Service of the battery packs should only be performed by the manufacturer or authorised service providers.
- Keep cord and charger away from heat to prevent damage to housing or internal parts.
- Keep charger and charger plug free of contamination and dirt.
- DO NOT pull the charger cord rather than the plug when disconnecting from the charge port. Damage to the cord or charger could occur and

create an electric shock hazard. Have damaged cords replaced by an authorized service center immediately.

1.3 RIDING ON SLOPE SAFETY

⚠ WARNING!

Slopes are a major factor related to loss of control and tip-over accidents, which can result in severe injury or death. Operation on all slopes requires extra caution. If you cannot back up the slope or if you feel uneasy on it, DO NOT mow it.

- NEVER attempt to ride on a steep slope or mow a slope that is greater than 15°.
- Mow up and down; not across the face of slopes.
- Avoid holes, ruts, bumps, rocks, property stakes, or other hidden objects. Uneven terrain could overturn the product.
- Use a slow speed so you will not have to stop suddenly or accidentally accelerate while on a slope.
- DO NOT mow on wet grass when on a slope.
- Avoid starting, stopping, or turning on a slope. If the tires lose traction, disengage the blades and proceed slowly straight down the slope.
- DO NOT try to stabilize the product by putting your foot on the ground.
- DO NOT use the product near drop-offs, ditches, excessively steep slopes, or embankments. The product could suddenly roll over if a wheel goes over the edge or if the edges caves in and result in death or serious personal injury.

1.4 MAINTENANCE SAFETY

⚠ WARNING!

Use only original manufacturer's replacement parts, accessories and attachments. Failure to do so can cause possible injury, can contribute to poor performance, and may void your warranty.

- Service on the product and the charger must be performed by qualified repair personnel only.
- Remove the start key from the product before storing, servicing, or changing accessories. Such preventive safety measures reduce the risk of starting the product accidentally.
- Keep the product free of grass, leaves, or other debris build up.
- DO NOT use water to clean the product. Use an air moving device, such as a compressor or leaf blower to clean the product.

- Always wear heavy-duty gloves when checking or clearing a blockage.
- Keep blades sharp and guards in place and in working order.
- The cutting blades continue to rotate for a few seconds after the motor is shut off. When servicing the blades, be aware that even though the power source is switched off, the blades can still be moved.
- To prevent serious personal injury, prevent damage to the product, and to maintain best performance, replace damaged, bent, cracked, or unevenly worn out blades.
- Make sure all nuts, bolts and screws at frequent intervals for proper tightness to ensure that the product is in safe working condition.
- Check the brakes before each use and frequently during use. Adjust and service as required.
- After each use, clean the product with a soft, dry cloth. Any part that is damaged should be properly repaired or replaced by an authorised service centre.

1.5 OTHER SAFETY TIPS

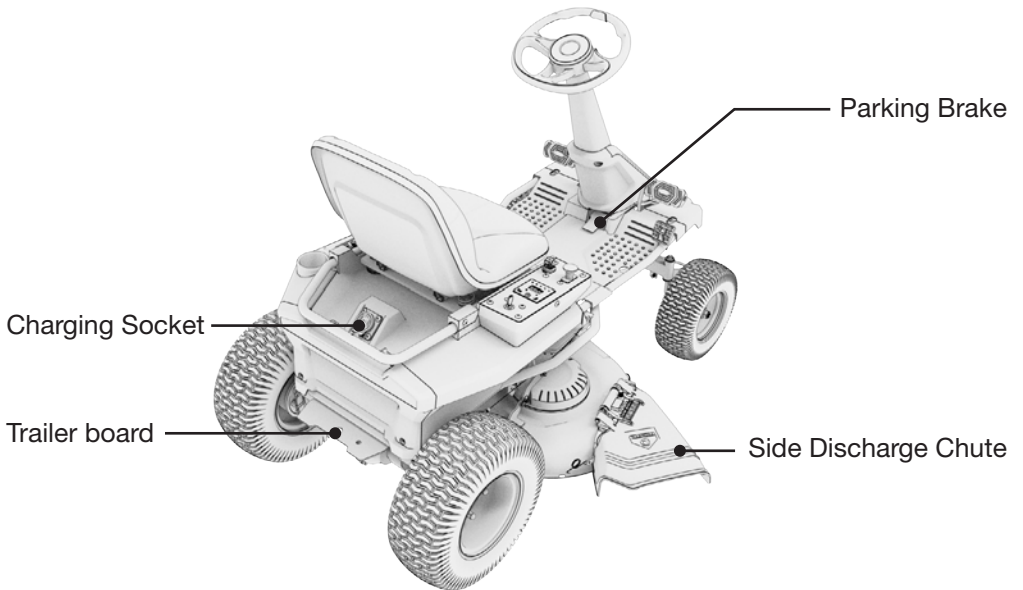
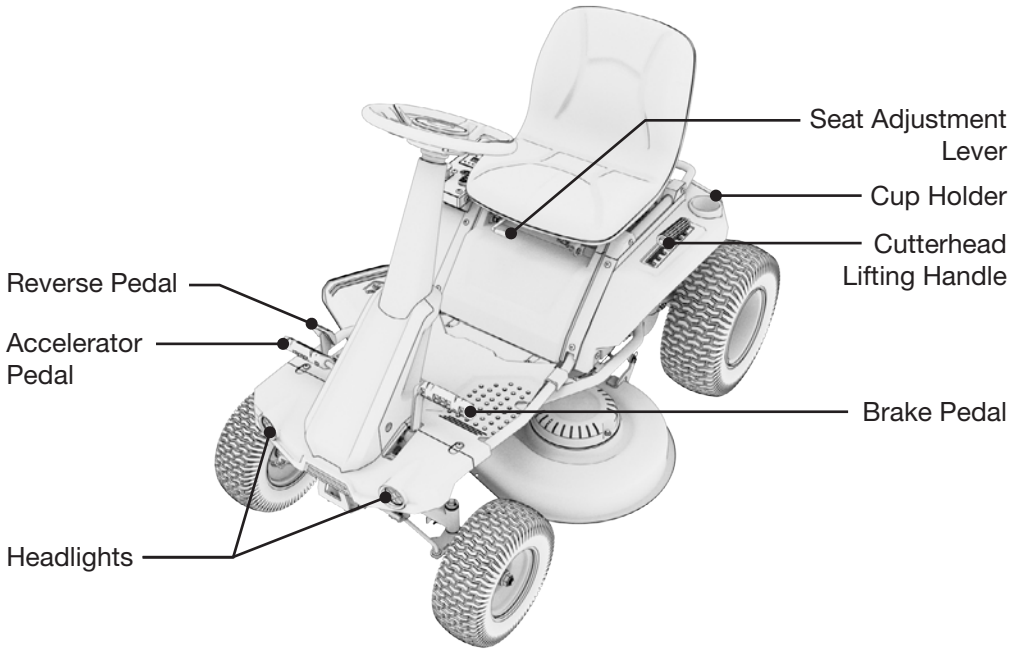
WARNING!

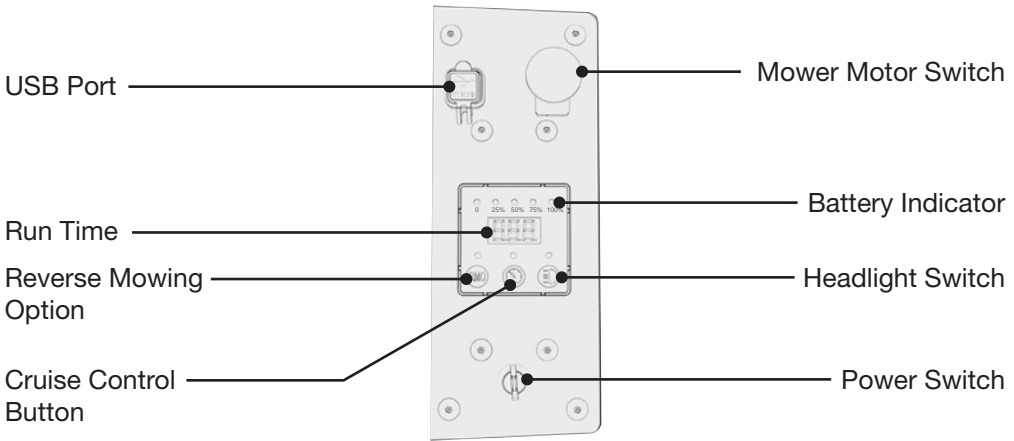
- Clean all foreign materials from the product. Store the product in a cool, dry, and well-ventilated place that is inaccessible to children.
- Remove the start key and store in a separate location out of the reach of children.
- Keep the product away from corrosive agents such as garden chemicals and de-icing salts. DO NOT store the product outdoors.

2. LEARN MORE ABOUT YOUR MOWER

This section will show you how to identify key parts of your lawn mower. Going over the terminology below will make sure we're on the same page.

2.1 COMPONENT IDENTIFICATION





2.2 CONTROL FUNCTIONS

Accelerator Pedal

- Controls the forward movement and speed of the riding mower.

Brake Pedal

- Slow down and stop the movement of the riding mower.

Charging Socket

- When charging, first connect the wire between the power supply and the charger, and then connect the charger and the mower.
- Always leave charger plugged in while not in use.
- When powered, the LED indicator on the charger will illuminate to indicate the charger's status.

Cruise control button

- Press to continue forward at a set speed without needing to press the accelerator pedal.

Cutterhead Lifting Handle

- Raise or lower the height of the cutting deck.

Mower Motor Switch

- Lift the switch upwards to start the mower blades.
- Push the switch to stop the mower blades.

NOTE

- For cutting in reverse, the reverse mode option (RMO) must also be activated.

Parking Brake

- Step on the parking brake and then the brake pedal. After hearing the sound, the riding mower will be locked in the braking position.

Power Switch

- Insert the start key and turn it to “ON” position to operate the riding mower.
- Turn the key to “OFF” position and remove it to fully stop the riding mower.

Reverse Mowing Option (RMO)

- Press the RMO button to allow the mower to cut when maneuvering in the reverse direction.

NOTE:

- The blades will automatically disengage if mower is operated in reverse without pressing the RMO button.

Reverse Pedal

- Controls the back movement and speed of the riding mower.

Seat Adjustment Lever

- Rotate the seat adjustment lever to adjust the position of the seat.

Run Time

- Tracks the running time of the riding mower.

USB Port

- The USB charging port can provide total 5V 2A DC power to your devices.

2.3 MAKE SURE YOU HAVE EVERYTHING

Make sure your mower has everything listed in the table below.

Part Name	Quantity
Riding Mower	1
User Guide	1
Seat Assembly	1
Steering Column Assembly	1
Battery Charger	1
Start Keys	1
Decorative tube	1
Wrench 10-13	1
Wrench 13-15	1
Allen wrench	1

3. GETTING STARTED

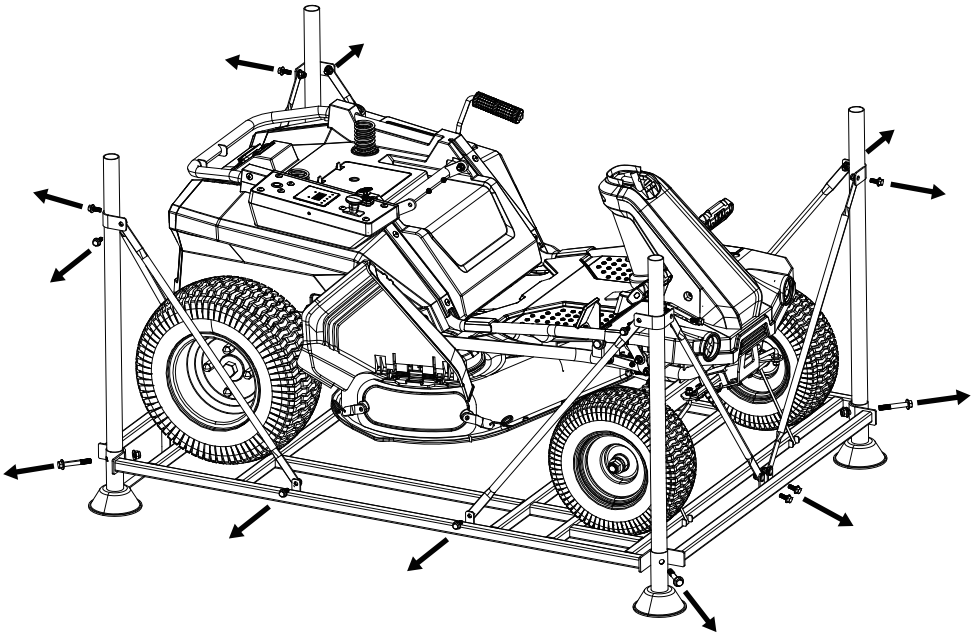
Setup of your riding lawn mower is designed to get you up and running as quickly as possible. Cut the four corners of the carton from top to bottom instead of attempting to lift it out of the box.

3.1 UNPACKING

⚠ WARNING!

If any parts on the 2.3 section are already assembled to the product when you unpack it, verify that the part is assembled correctly and properly tightened. Use of a product that may have been improperly assembled could result in serious personal injury.

To prevent accidental starting that could cause serious personal injury, always remove the start key from the product when assembling the parts.



1. Remove the bolts securing the corner and side braces to the frame bottom, then lift the braces to remove.
2. Cut the nylon straps securing the front and rear wheel axles to the frame.
3. Remove the boxes containing loose parts, assembly hardware, and documentation.
4. Remove and set aside all accessible packaging and wrap from the unit and

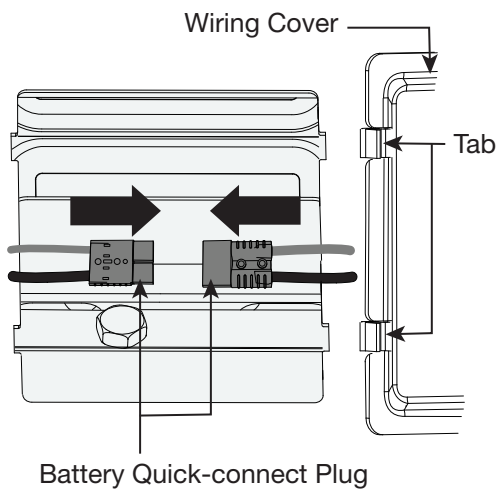
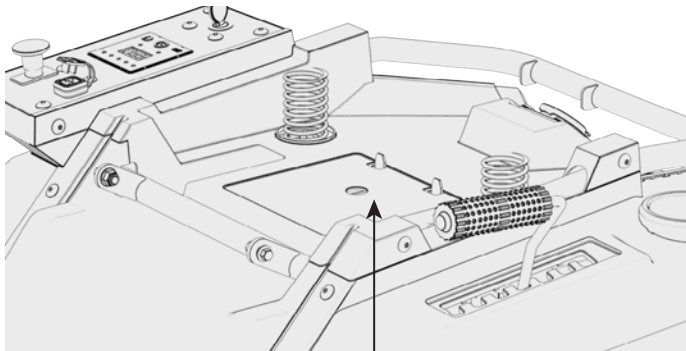
parts. DO NOT discard the packing material until you have carefully inspected and satisfactorily operated the product.

NOTE

- The product should be assembled while positioned on the frame bottom.

3.2 CONNECTING THE BATTERY

When shipped from the factory, the product's batteries are disconnected. Follow the instructions below to connect the battery.



1. Press the tabs on the wiring cover, and lift the cover.
2. Connect the two ends of the battery quickconnect plug together.

NOTE

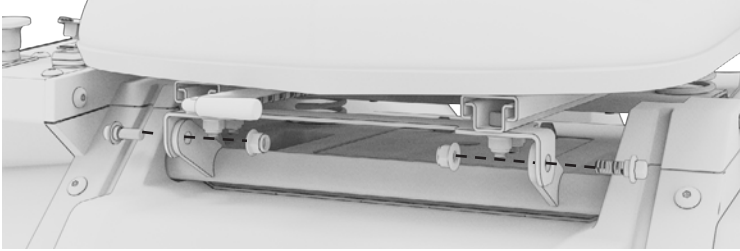
- Before reinstalling the wiring cover, install the seat as described in the next section.

3.3 INSTALLING THE SEAT

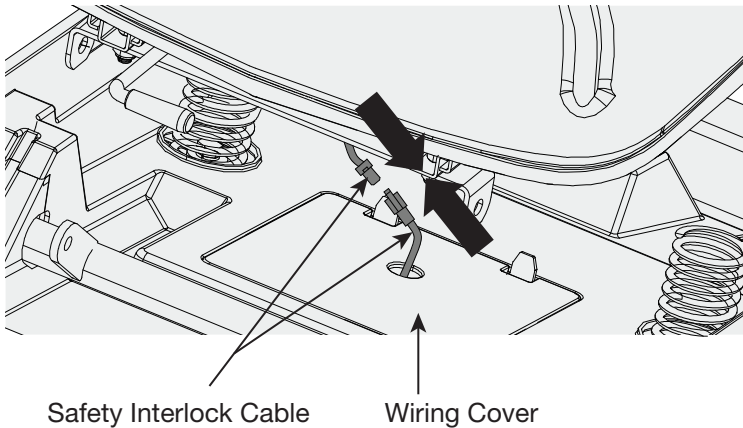
⚠ WARNING!

Inspect the product carefully to ensure that no breakage or damage occurred during shipping. Assembling the product with damaged, missing, or incorrect parts could result in serious personal injury.

1. Place the seat assembly over the mounting brackets, aligning the holes as shown. Install and securely tighten the bolts and flange nuts.

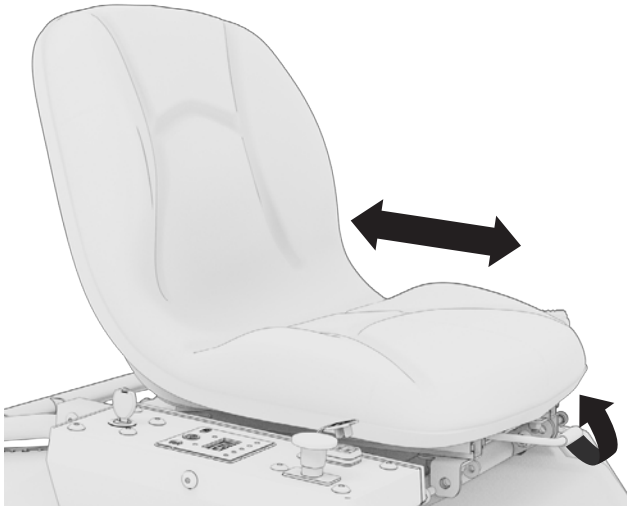


2. Route the seat safety interlock cable through hole in the wiring cover, then connect to the plug on the mower.



3. Reinstall wiring cover, and ensure that it is securely seated.

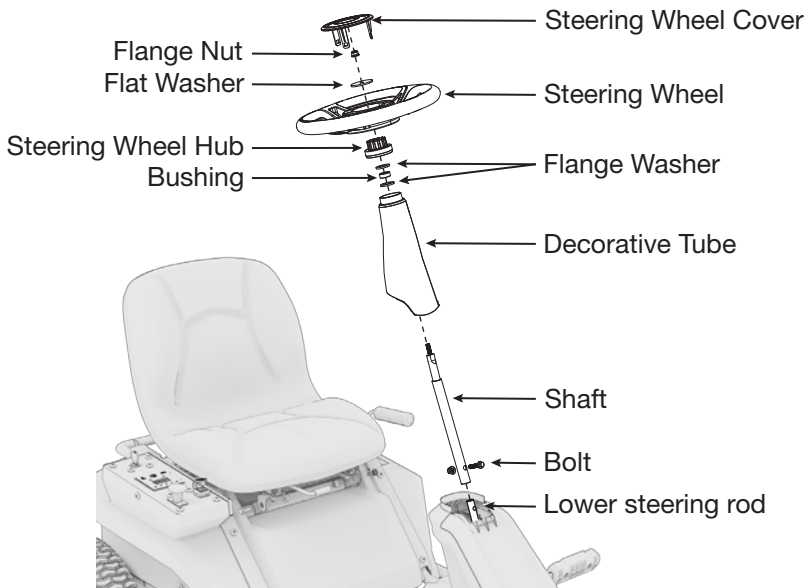
Adjusting the Seat



Before operating the riding mower, adjust the seat position to ensure that your feet can step in the accelerator pedal or brake pedal firmly.

1. Sit down on seat and lift the seat adjustment lever.
2. While holding the lever, slide the seat to the desired position.
3. Release the lever and make sure the seat is locked in position.

3.4 INSTALLING THE STEERING COLUMN



1. Put the shaft into the lower steering rod to align the shaft and lower steering rod mounting holes. After inserting the bolts, tighten them with

- Flange nut. The recommended torque is $25 \pm 2\text{N.m}$.
2. After installing the shaft, put the decorative tube on the shaft.
 3. Put flange washer, bushing, flange washer, Steering wheel hub on the shaft.
 4. Then install steering wheel and flat washer in the order and direction as shown in the figure. The mounting points of the steering wheel and the steering wheel base are aligned and fixed with flange nut. The recommended torque is $24 \pm 2\text{N.m}$.
 5. Finally install the steering wheel cover on steering wheel

Once assembly is complete, set the cutting deck to its maximum height, then position a ramp next to the frame bottom, and slowly and carefully drive the product off the frame.

NOTE

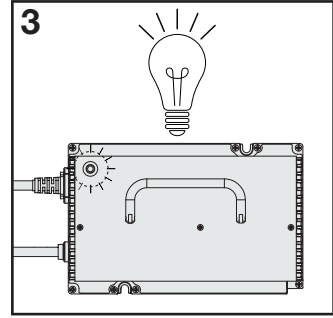
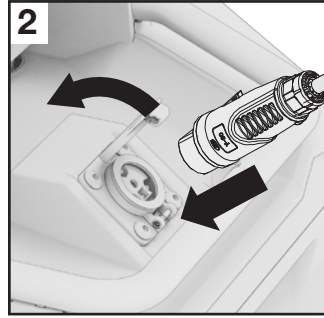
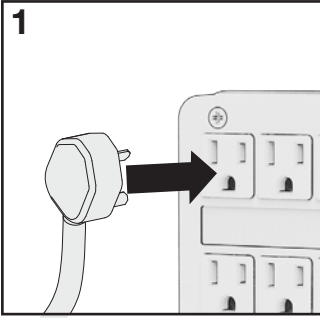
- Use care when driving the product off or the frame, and step on the brake pedal as needed to control the speed. The product freely rolls if it is moved on an inclined surface without stepping on the brake pedal or engaging the parking brake. Failure to follow these instructions can result in loss of control and result in death, serious personal injury, or property damage.
- If no ramp is available, slowly and carefully drive the product off the frame in reverse while looking down and behind. Driving the product off the frame in the forward direction without a ramp can cause damage to the cutting deck.

3.5 CHARGING THE PRODUCT

Mower batteries must be charged overnight before first use. To verify mower batteries are fully charged, check the battery level indicator.

NOTE

- Charger input power specification: AC 100V~ 240V, frequency 50/60Hz.
- The charger is equipped with a plug featuring a grounding pin and must be plugged into a matching standard three prong outlet that has been properly installed and grounded in accordance with all local codes and ordinances.
- In order to prolong the service life of the battery, it is recommended to charge it once every three months.
- When the battery power is lower than 25%, the mowing motor will automatically shut down.



1. First connect the wire between the power supply and the charger. If equipped with a filter, connect the filter between the power supply and the charger.
2. Connect the charger to the mower.
3. See the chart below to determine the meaning of the light colours.

Light	Description
Red	Battery charging.
Green	Battery charge complete.

4. When you are ready to mow, disconnect the charger from the power supply, then disconnect the charger from the mower.

4. STARTING THE RIDING MOWER

 **WARNING!**

Clear the area before operating the product. If anyone enters the mowing area, stop immediately and do not return to mowing until the bystanders leave the area.

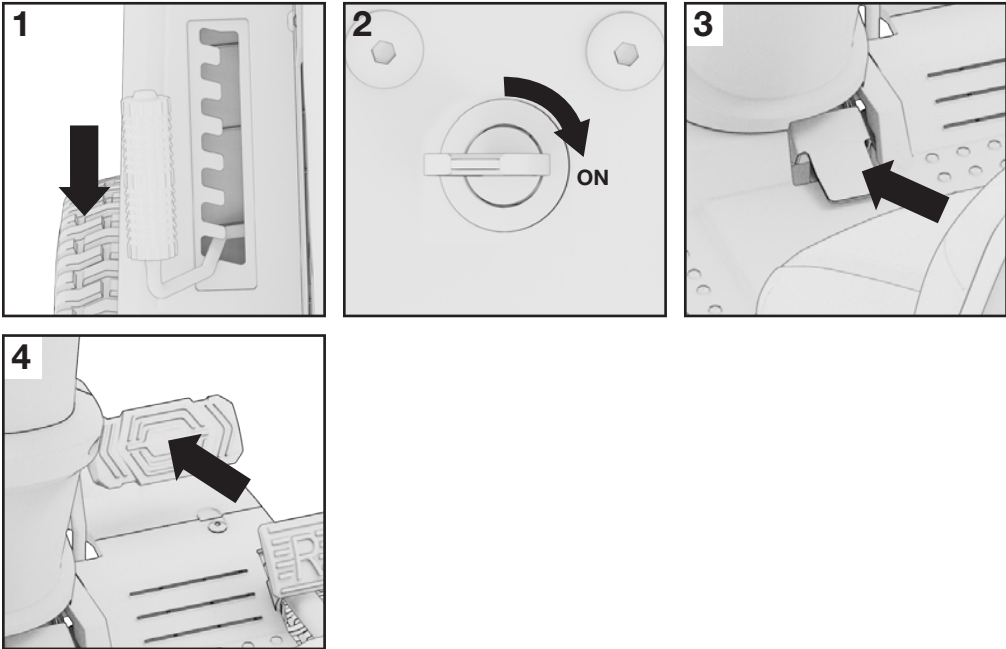
Use caution when crossing over gravelly paths or driveways. Before crossing, stop the blades and set the cutting deck to the maximum height to minimize the possibility of ricochet. Drive slowly to avoid loss of traction and control.

DO NOT attempt to change the direction of operation while the mower is in motion. Always come to a complete stop before changing the mower direction.

4.1 START THE RIDING MOWER

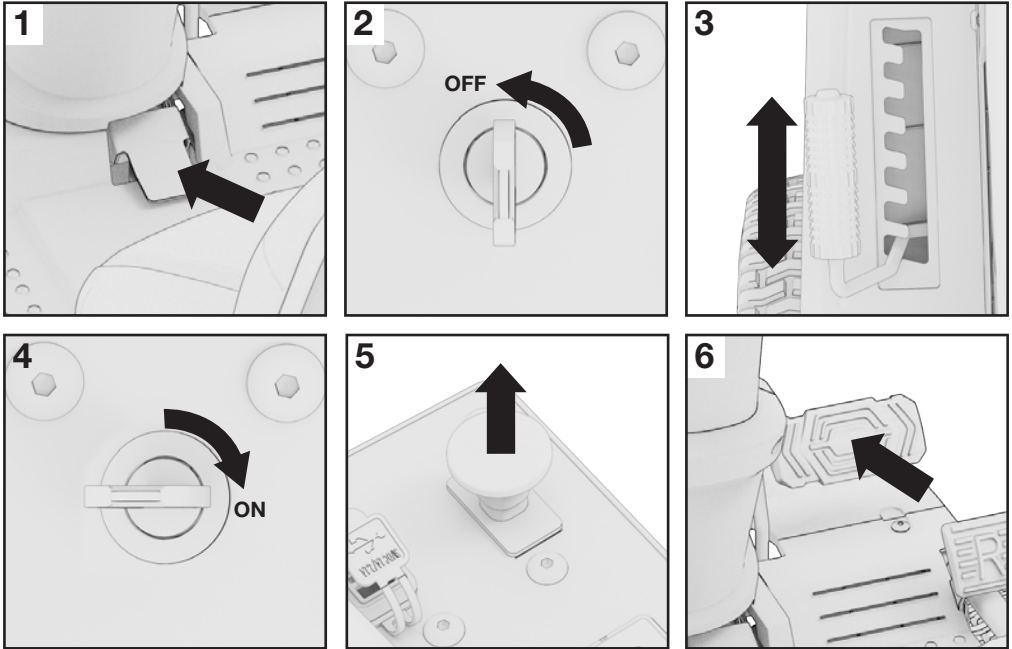
WARNING!

Be certain that you have correctly set your intended direction of travel with the direction control switch before pressing the accelerator pedal. Failure to do so could result in you driving the mower in an unintended direction, which could cause loss of control or an accident resulting in death, serious personal injury, or property damage.



1. Set the cutterhead lifting handle to the maximum height.
2. Insert key to power switch, and turn the key to the ON position.
3. Disengage the parking brake.
4. Press on the accelerator pedal to drive to desired location.

To Start Mowing

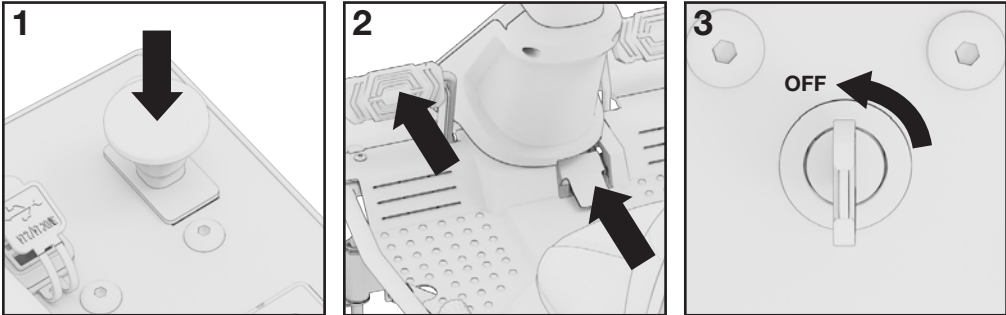


1. Stop the mower and engage the parking brake.
2. Turn the start key to the OFF position.
3. Set the cutting deck to the preferred position.
4. Turn the key to the ON position, and disengage the parking brake.
5. Pull up the mower motor switch to activate the blades.
6. Press the accelerator pedal to mow the lawn.

4.2 STOP THE RIDING MOWER

NOTE

- Stop mower on a flat, level surface. DO NOT stop the mower on a slope.

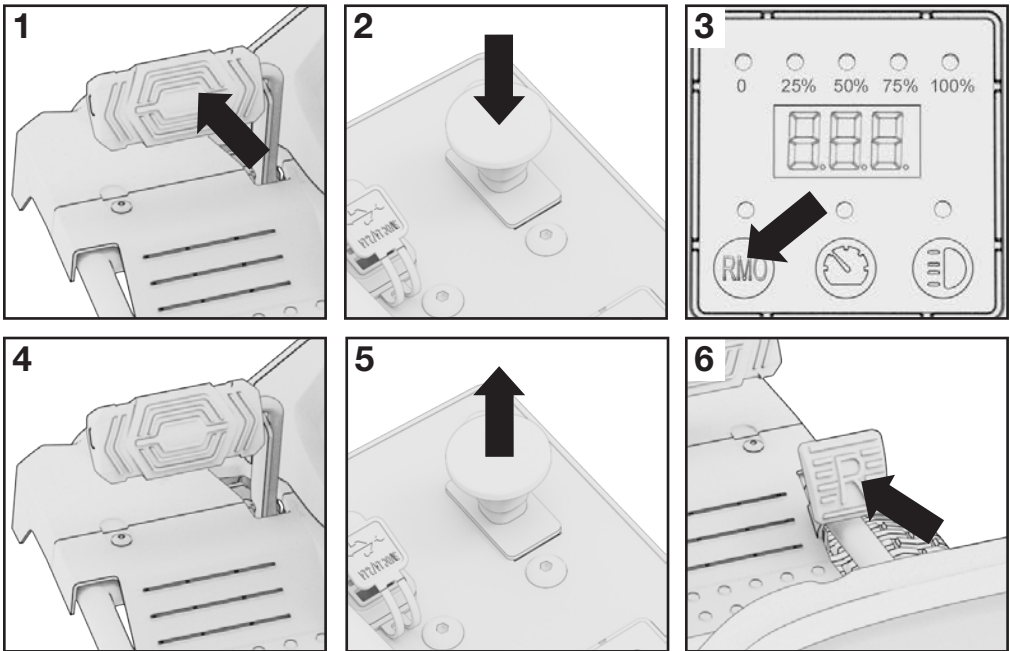


1. Push the mower motor switch to OFF.
2. Set the parking brake by fully depressing the brake pedal and parking brake at the same time.
3. Turn the key to OFF position.

4.3 REVERSE MOWING OPERATION (RMO)

⚠ WARNING!

DO NOT mow in reverse unless absolutely necessary. Always look down and behind before and while backing to make sure no children, bystanders, or pets enter the mowing area. Be aware that the reverse mode operation is activated when the reverse mode button is illuminated in red and a constant beeping sound is emitted.



1. Press the brake pedal to bring the riding mower to a complete stop.
2. Press the mower motor switch to confirm that the blade stops rotating.
3. Press the “RMO” button and confirm that the indicator light is on.
4. Release the brake.
5. Pull up the mower motor switch.
6. Slowly step on the reverse pedal.

NOTE

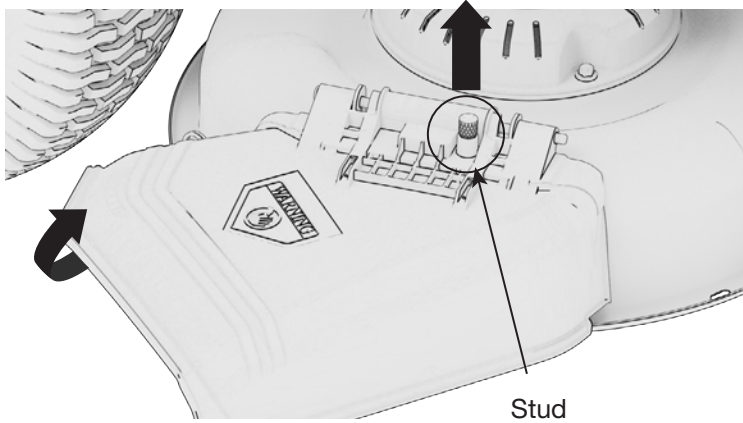
- Reverse mode operation resets each time the power switch is turned to the OFF position.

5. USING YOUR RIDING MOWER

5.1 INSTALLING THE MULCH COVER

The mower is configured for side discharge when shipped. If mulching is desired:

1. Lift the stud and then raise the side discharge chute.

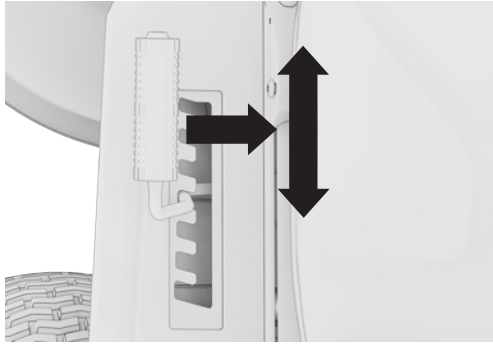


2. Place the mulch cover on the tab on the mower housing.
3. Connect the mulch cover latches to the two side mounting points on the mower deck housing.
4. Release the side discharge chute.

5.2 ADJUSTING THE CUTTING DECK HEIGHT

NOTE

- During equipment transportation, set the height of the cutter head from the ground to 3 inches.
- DO NOT release the cutterhead lifting handle quickly, it may cause harm by squeezing or pulling the operator's hand.



Raise the Cutting Deck

1. Stop the mower as described in Section 4.2.
2. Hold the cutterhead lifting handle, push left to disengage from slot, move toward the back of the mower, then push right into slot to secure.

Lower the Cutting Deck

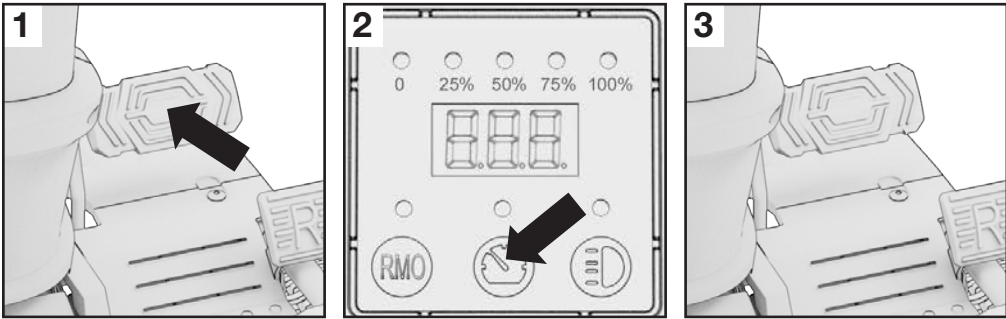
1. Stop the mower as described in Section 4.2.
2. Hold the cutterhead lifting handle, push left to disengage from slot, move toward the front of the mower, then push right into slot to secure.

5.3 SETTING THE CRUISE CONTROL

⚠ WARNING!

Cruise control should only be used in the forward position on relatively smooth, straight surfaces, and should never be used on slopes or rough terrain.

Activate Cruise Control



1. While driving the mower forward, press the accelerator pedal until the desired rate of speed is achieved.
2. Press the cruise control button. The light around the button will illuminate to show cruise control is active.
3. Release the accelerator pedal. Mower speed should remain constant.

Deactivate Cruise Control

1. Choose one of the following options to deactivate cruise control:
 - a. Tap on the accelerator pedal.
 - b. Press the brake pedal.
 - c. Press the cruise control button.
2. The light around the cruise control button will go out to indicate cruise control is no longer active.

5.4 SLOPE OPERATION

⚠ WARNING!

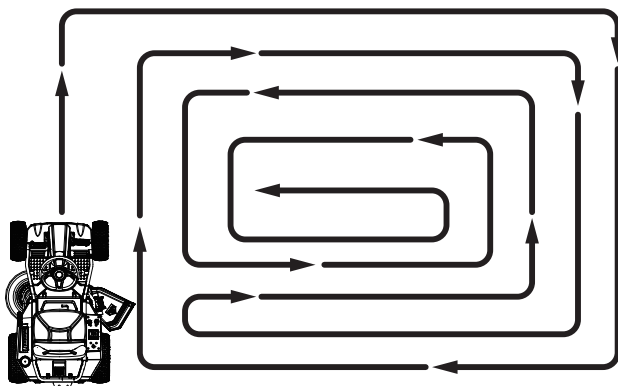
Slopes are a major factor related to tip-over and rollover accidents that can result in severe injury or death. Operation on slopes requires extra caution. If you feel uneasy on a slope, do not mow it. For your safety, do not attempt to mow steep slopes greater than 15°. Make a copy or cut out the slope guide image on and use to determine if your slope is too steep for safe operation.



- Mow up and down, not across the face of slopes.
- DO NOT mow on wet grass. Wet grass can cause the tires to lose traction or slip on slopes, even though the brakes are functioning properly.
- Watch for holes, ruts, rocks, hidden objects, or bumps which can cause you to slip or trip. Tall grass can hide obstacles. Remove all objects such as rocks, tree limbs, etc., which could be tripped over or thrown by the blade.
- DO NOT mow near dropoffs, ditches, or embankments.
- Drive slowly and do not make sudden changes in speed or direction.
- Avoid stopping on slope if at all possible. If stopping is unavoidable, make sure to engage parking brake.
- When restarting, use lowest possible speed. If turning is necessary, exercise extreme caution when changing direction and always turn downhill.
- NEVER attempt to stabilize the mower on a slope by placing your foot on the ground during operation.

- If using the optional bagger kit, use extreme caution and operate the mower slowly when operating on slopes, as the bagging kit can change the stability of the mower.
- Always use the brakes when travelling down the slope. DO NOT attempt to let the mower coast downhill in neutral.
- If at any point the tires lose traction while operating on a slope, disengage the blades and proceed slowly and carefully straight down the slope.

5.5 MOWING TIPS



- Keep mower blades sharp.
- Make sure the lawn is clear of stones, sticks, wires, toys, tree nuts, tree branches, and other objects that could damage the riding mower blades or motor. DO NOT mow over property stakes or other metal posts. Such objects could damage the blade or be accidentally thrown by the mower in any direction and cause serious personal injury to the operator and others.
- For a healthy lawn, always cut off one-third or less of the total length of the grass.
- When mowing large areas, start by turning to the right so that clippings will discharge away from shrubs, fences, driveways, etc. After one or two rounds, mow in the opposite direction, making left hand turns until finished.
- Mow so that discharged clippings exit in the direction of the lawn area that has already been cut.
- When cutting heavy grass, reduce speed to allow for more effective cutting and a proper discharge of the clippings.

- DO NOT cut wet grass. It will stick to the underside of the deck and prevent proper bagging or mulching of grass clippings.
- New or thick grass may require a narrower cut or a higher cutting height.
- Keep the mower deck and side discharge chute clean. Remove grass clippings, leaves, dirt, and any other accumulated debris before and after each use. DO NOT spray with a garden hose to clean.

6. MAINTENANCE

⚠ WARNING!

Before performing any maintenance, stop the mower, wait for the blades to come to a complete stop, and remove the start key to avoid accidental starting and possible serious personal injury.

Always wear eye protection with side shields marked to comply with ANSI Z87.1. Failure to do so could result in objects being thrown into your eyes resulting in possible serious injury.

Proper maintenance keeps your riding mower in the best operating condition by ensuring safe, economical and trouble-free operation. Only use genuine parts to replace the worn components. Improper maintenance may cause the generator to malfunction and can lead to serious injury. Contact customer support if you have any maintenance questions.

NOTE

- Check for damaged, missing, or loose parts such as screws, nuts, bolts, caps, etc.
- Check for dirt and debris and clean as necessary.
- DO NOT operate this product until all missing or damaged parts are replaced.

6.1 MAINTENANCE SCHEDULE

Regular maintenance will improve performance and extend the service life. Maintain the riding mower according to the maintenance schedule below.

NOTE

- Service more frequently when used in dusty areas or adverse conditions.
- These items should be serviced by an authorized service center, unless you have the proper tools and are mechanically proficient. Refer to user guide for service procedures.

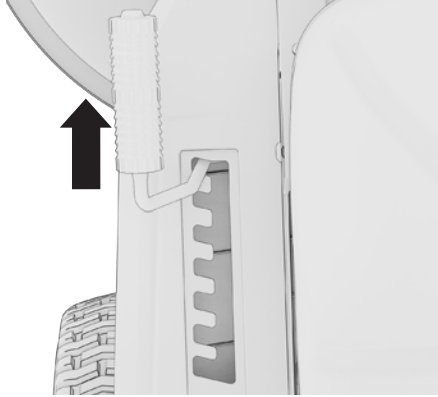
Before Each Use
Check Brake Operation Check Tire Pressure Check Safety Interlock System Check for Loose Fasteners Clean Debris from Mower
Every 24 Hours
Inspect / Replace Mower Blades Lubricate mower pivot points, front axle pivot and axle spindles, front axle wheel bushings, and deck pivot points
Every 50 Hours or 6 months
Clean Debris from Mower Inspect / Replace Mower Blades ¹ Clean Battery Terminals
Every 100 Hours or 12 months
Add Oil to Transaxle ¹

¹ Recommend service to be performed by authorized service dealer.

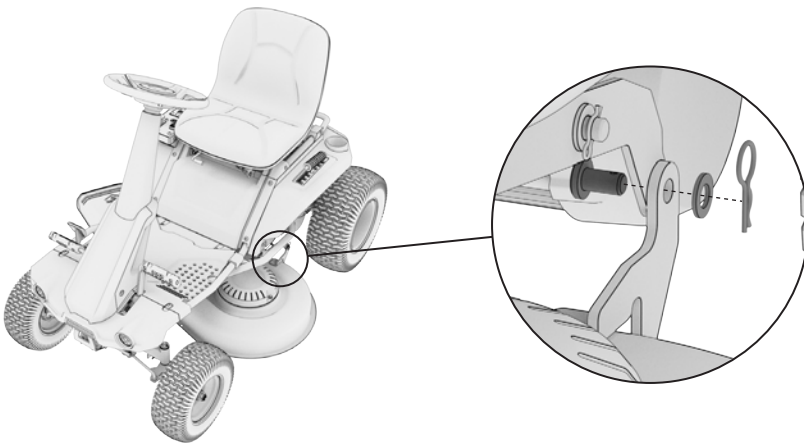
6.2 REMOVING THE CUTTING DECK

If desired, the cutting deck can be removed from the mower to make accessing the blades easier.

1. Stop the mower as described in Section 4.2 and remove the key.
2. Lower the position of the deck to the lowest level.

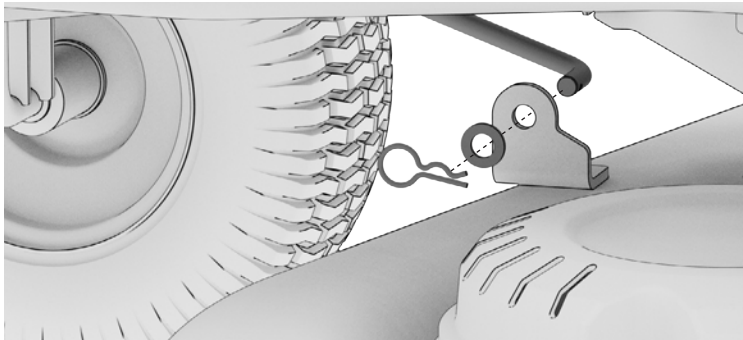
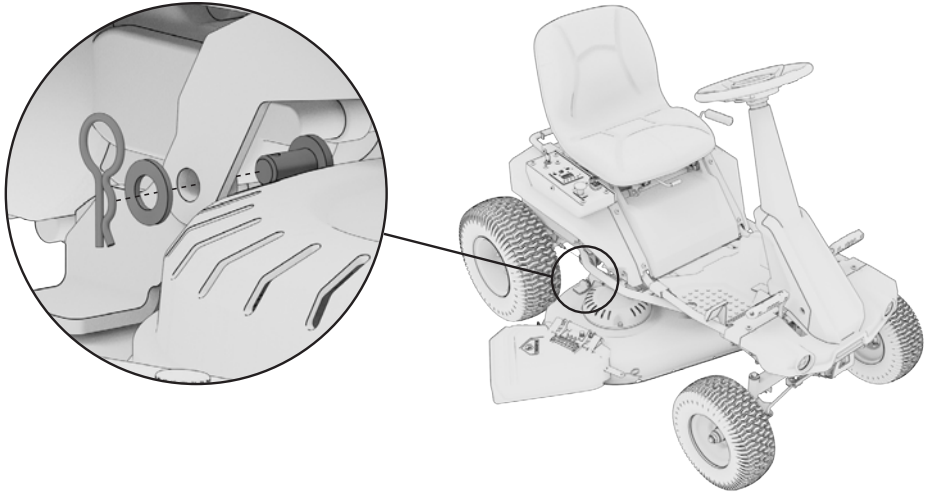


3. Disconnect the wire connecting the riding mower motor and the riding mower (the left cutting deck wire connects to the right controller line, the right cutting deck wire connects to the left controller line). Rotate the cable counter clockwise to lock, and turn clockwise to loosen.
4. Remove the three lock pins, gaskets and pin shafts of the fixed cutting deck in sequence.



5. Slide the cutting deck out from under the riding mower. At this time, a staff

member is also needed to stabilize the fixed lifting handle to prevent rebound from falling out.



6.3 REPLACING CUTTING BLADES

⚠ WARNING!

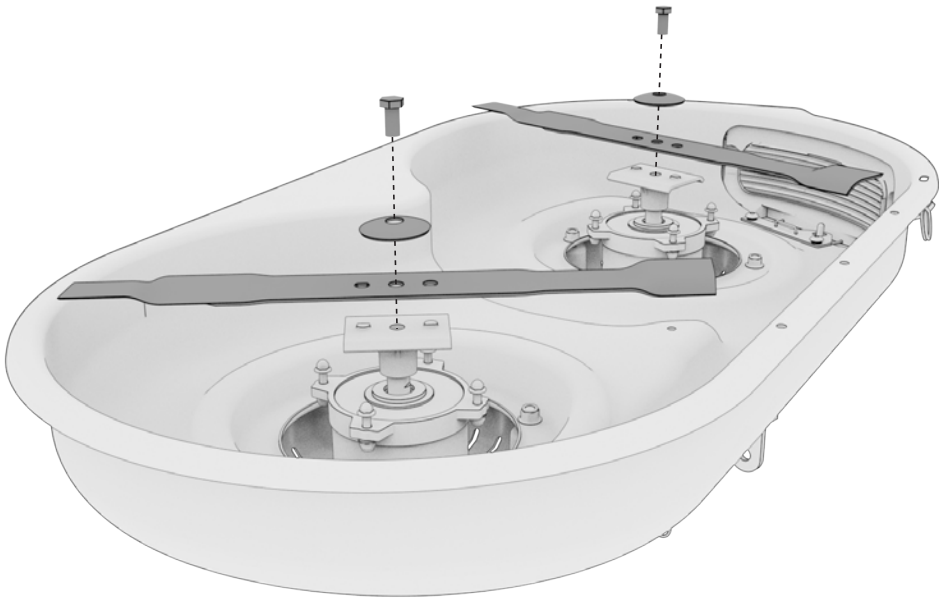
If raising the mower to access the blades, make sure the mower is properly secured and the parking brake is set before proceeding. Failure to properly secure the mower could cause it to fall, resulting in death or possible serious personal injury.

Only use replacement blades and blade bolts authorized by the manufacturer of your riding mower. Use of blades and blade bolts not authorized is hazardous and may damage your riding mower.

NOTE

- When removing and replacing the cutter head and blades, at least two people are required to work together.

Recommended torque of the blade bolt: **40N.M**



1. Remove the cutter head as described in the previous Section 6.3.
2. Insert a wooden board between the blade and the wall of the cutter head of the mower to prevent the blade from rotating.
3. Use a 15mm wrench or socket to turn the blade bolt counterclockwise (viewed from the bottom of the mower) to loosen the blade bolt.
4. Remove blade bolts, washers, flat washers and blades.
5. Place the new blade on the blade holder in the direction of the original blade, and make sure that the two semicircular holes at the center of the blade fit into the semicircular protrusions of the blade holder.

6. Replace with new nylon flat gaskets, blade septa, and bolts. Make sure to install the parts back in the reverse order of disassembly during assembly.
7. Use a torque wrench to tighten the blade bolts clockwise to ensure that the bolts are in place.

6.4 TIRE AIR PRESSURE

⚠ WARNING!

Check the tire pressure carefully while inflating. Too much air in the tire could cause the tire to burst, causing serious personal injury.

Failure to maintain correct air pressure in the tires could cause problems with mower operation and stability, causing serious personal injury.

Check the air pressure in all tires before use. Improper air pressure will affect handling, steering response, traction, tire life, level cutting, and operator comfort. Be sure tires are inflated to the pressure shown below.

Recommended pressure: **20 PSI (137.9 kpa)**

NOTE

- Front tire size: 13 in
- Rear tire size: 16 in
- Tire pressure should only be measured or adjusted when tires are cold.

6.5 REPLACING TIRES

When tires are worn, the traction of the mower will be decreased, which increases the chance of having an accident. Tires should be replaced when the depth on the tread is 0.16 in. (4 mm or less, or any time there is damage to the tire. Always use identical replacement tires. Using improper tires on the mower could cause loss of control, which could cause serious personal injury. Have tires replaced by an authorized service center or a qualified tire repair station.

NOTE

- If a leak or flat tire occurs due to a puncture, the tire may be repaired using a plugtype patch.
- If the damage is from a cut, or if the puncture cannot be repaired using a plug, the tire should be replaced.

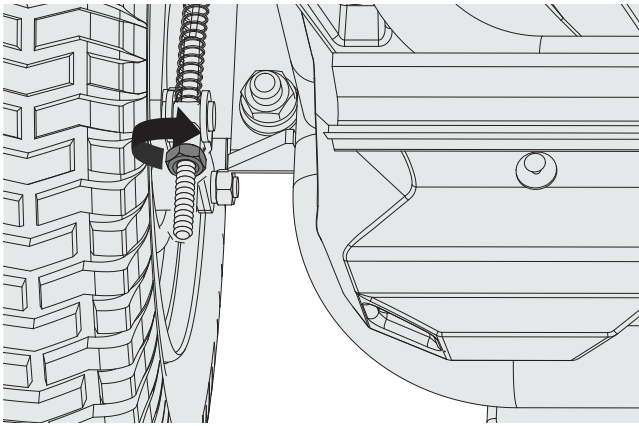
6.6 ADJUSTING THE BRAKES

Being able to stop the mower properly is critical to mowing safety. If you've noticed your mower traveling farther before stopping when you depress the brake pedal, the brakes may need adjusting.

Test the Brakes

1. Park the mower on a level surface and set the parking brake.
2. Place the direction control switch in neutral (N).
3. Stand behind the mower and try to push it forward. If the rear tires turn, the brakes need to be tightened.

Tighten the Brakes



1. Locate the brake adjustment nuts on the interior side of each of the rear wheels.
2. Turn each adjustment nut 1/4 turn clockwise, then try again to push the mower. Continue rotating each nut 1/4 turn and testing until the mower can no longer be moved by pushing.
3. After final adjustment, test the brakes by driving the mower at normal speed on flat ground to be sure the mower stops quickly when the brake pedal is depressed.

6.7 REPLACING BATTERIES

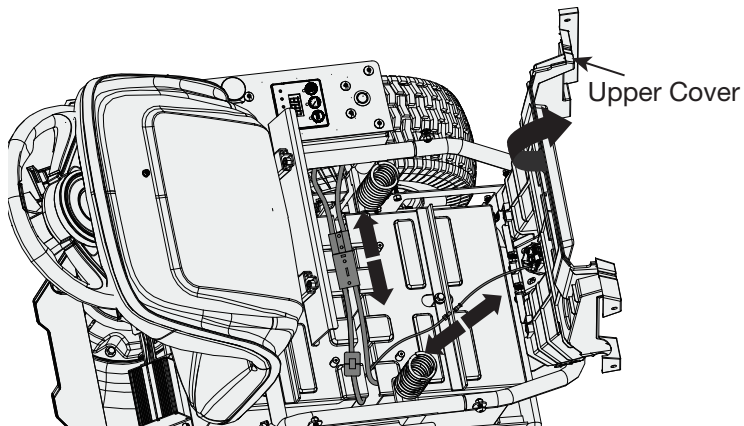
⚠ WARNING!

DO NOT attempt to destroy or disassemble battery pack or remove any of its components. Lead-acid batteries must be recycled or disposed of properly. NEVER touch both terminals with metal objects and body parts as short circuit may result. Keep away from children. Keep away from other metal objects like paper clips, coins, keys, nails, screws, or other small metal objects that can make a connection from one terminal to another. Failure to comply with these warnings could result in fire and /or serious injury.

Under extreme usage or temperature conditions, battery leakage may occur. If liquid comes in contact with your skin, wash immediately with soap and water. If liquid gets into your eyes, flush them with clean water for at least 10 minutes, then seek immediate medical attention.

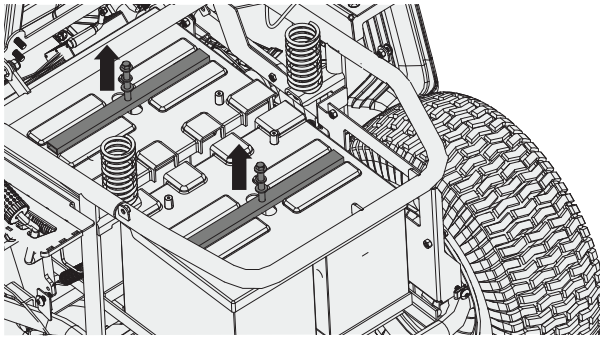
This mower operates on four 12V batteries connected in a series. If replacing one or more of the batteries, always replace using a battery of the same type with equal voltage and capacity.

1. Stop the mower as described in Section 4.2 and remove the key.
2. Lift the seat forward and pull out the seat sensing cable from the middle joint.
3. Remove the 6 screws fixing the upper cover, pull out the connection cable between the charging socket and the riding mower, and take out the upper cover.
4. Disconnect all the connecting wires between the battery and the riding mower from the joints.



5. Remove the battery bead and screw of the battery waterproof cover,

unfasten the clamps that fix the wiring harness, and take out the battery waterproof cover.



6. Remove the series wires from the battery terminals.
7. Pull out the battery from back to front until the battery to be replaced is taken out. The battery is heavy, please handle with care to prevent the battery from being damaged by collision.
8. Upon removal, cover the battery pack terminals with heavy-duty adhesive tape. Recycle or dispose of batteries properly.
9. Put in the new battery from the front to the back, and place it according to the position when it was taken out.
10. In the reverse order of disassembly, install the battery waterproof cover, battery fixing plate and screw in sequence.
11. Connect the battery power cord to the plug of the riding mower, and then fix it with a wire clip.
12. Connect the cable between the charging socket and the riding mower, the round hole of the cover plate of the upper cover penetrates upwards.
13. Fix the rear cover on the frame with screws, and connect the upper joint of the seat sensor cable to the lower connector connection.
14. Reset the seat. Sit on the seat, insert the key to turn ON the power switch, and check whether the electricity meter is displayed normally.

NOTE

- The product contains lead-acid batteries. Local regulations may prohibit disposal of lead-acid batteries in ordinary trash. Consult your local waste authority for information regarding available recycling and /or disposal options.

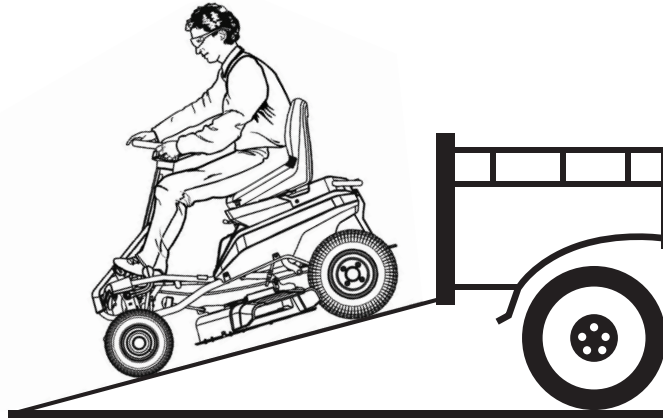
7. TRANSPORTATION & STORAGE

⚠ WARNING!

Use extreme caution when towing the product. Keep all body parts away from the blade while it is exposed.

NOTE

- Use extra care when loading or unloading the product onto a trailer or truck. Step on the brake pedal as needed to control the speed.
- When loading or unloading the product, do not exceed the maximum recommended operation angle of 15°.
- Ensure the cutting deck is raised to the highest position so that it is not caught on the ramp.



Transportation

1. Park the mower on a level surface.
2. Raise the cutting deck to the highest position.
3. Position and secure ramp to the trailer. Use one full width loading ramp that is at least 1 ft. wider than the mower to minimize the risk of the mower's wheels going off the side of the ramp. Slowly drive the mower onto the ramp and into the trailer.
4. Lower cutting deck completely.
5. Set the parking brake.
6. Turn off mower and remove key. Make sure that all moving parts have come to a complete stop.
7. Secure the mower as needed using straps or cables to prevent movement during transport.
8. Allow the product to cool down before transporting.

Storage

NOTE

- Keep the product away from corrosive agents such as garden chemicals and de-icing salts.
 - DO NOT store the product outdoors.
 - Check for loose fasteners and clean debris from mower before storage.
1. Park the mower on a level surface.
 2. Set the parking brake.
 3. Turn off mower and remove key. Make sure that all moving parts have come to a complete stop.
 4. Allow the product to cool down before storing in a cool, dry, and well-ventilated place.

Transporting Lead-acid Batteries

Transport the battery in accordance with local and national provisions and regulations. Ensure that no batteries can come in contact with other batteries or conductive materials while in transport by protecting exposed connectors with insulating, non-conductive caps or tape.

NOTE

- DO NOT transport batteries that are cracked or leaking.

8. TROUBLESHOOTING

Problem	Look for	Solution
The key is inserted but the machine does not start.	The battery is too low.	Charge the battery.
	The charger is not unplugged.	Unplug the charger.
	The key is not turned to the ON position.	Turn the key to the ON position.
	Poor connection of battery circuit.	Check and clean the wiring connection.
The riding mower does not work when the forward pedal is depressed.	Parking brake activated.	Cancel the parking brake.
	The machine is low on battery.	Charge the machine.
	The machine is malfunctioning.	Contact an authorized dealer for testing.
The riding mower cuts the grass unevenly.	Uneven tire air pressure.	Check and adjust the air pressure of the four tires.
	The left and right height difference of the cutter head is too large.	Adjust the left and right height of the cutter head.
	Worn or damaged blades.	Replace the blade.
	Weeds piled up in the cutter head.	Clean the weeds from the cutter head.
	Mowing too fast.	Reduce mowing speed.
The riding mower vibrates severely.	The riding mower vibrates severely.	Replace the blade.
	The motor shaft of the blade is bent.	Stop the machine and remove the start key to check for damage. If damaged, Contact an authorized dealer for repair.

The mowing effect is not good.	Side exhaust ducts or openings are blocked.	Clean side exhaust ducts or openings.
	Grass is wet.	Wait until the grass is dry.
	Mowing too fast.	Reduce mowing speed.
	The grass grows too high.	Re-mowing the area where the grass is too high.
The blade stops working while mowing.	The position of the cutter head is too low.	Increase the height of the cutter head.
	The battery is too low.	Charge the battery.
The blade does not start.	The battery is too low.	Charge the battery.
	The motor switch of the blade is not turned on.	Turn on the blade motor switch.
	Operator is not fully seated.	The operator is fully seated in the seat.
	There are debris in the cutter head blocking the blade from working.	Clean the bottom of the cutter head.
The blade does not work when retreating to mowing.	RMO button is not pressed.	Press the RMO button to enter the backward mowing mode.
	The motor switch of the blade is not turned on.	Turn on the blade motor switch.
Riding mower cannot reach full speed.	The battery is too low.	Charge the battery.
After the operator is not activate the parking brake and leave the operating seat, the blade continued to work.	The security system is not working properly.	Contact an authorized dealer for inspection and repair.

The headlight does not turn on when the light button is pressed.	Headlamp is damaged.	Replace the headlight.
	Wiring is damaged.	Check wiring, and contact an authorized dealer.
The battery cannot be charged.	Battery is damaged.	To replace the battery.
	The charging cradle's wiring failure.	Send the riding mower to the after-sales center for inspection and repair.
	The charger is damaged.	Replace the charge.

9. TECHNICAL SPECIFICATIONS

	SPECIFICATIONS	BEM3775
BATTERY	Power Source	Lead-Acid Battery
	Number of Batteries	4
	Battery Voltage	48V (12V x 4)
	Battery Amperage	75A
	Cell MilliAmp Hours	75000 mAh
	Run Time (Minutes)	100 min
	Battery Charger	Wall Mounted with Cord
	Cord Length	2.8 m
	Charge Time (Minutes)	720 min
RIDING MOWER	Starting	Electric
	Deck Width	37 in
	Deck Functions	Side, Mulch
	Height Positions	7
	Number of Blades	2
	Blade Type	Straight
	Blade Length	18 in x 2
	Cutting Width	36 in
	Minimum Cutting Height	1.5 in
	Maximum Cutting Height	4.5 in
	Front/Rear Wheel	13 / 16 in
	Propulsion Type	RWD
	Max Forward Speed	5 mph ± 0.5 mph (8 km/h ± 0.8 km/h)
	Max Reverse Speed	2.2 mph ± 0.2 mph (3.6 km/h ± 0.4 km/h)
	Sound Level	100 dBA (Blades Only)
Dimensions (L*W*H)	58.2 x 49.2 x 43.5 in	
Net Weight	454 lbs / 206 kg	

10. LIMITED WARRANTY

This product is distributed by:
Midland Power Inc.
376 Magnetic Drive, Toronto, ON M3J 2C4, Canada

Warranty

Beginning at the time of retail purchase and for the duration of the warranty period Midland Power Inc. (Midland) warrants that Equipment manufactured by it is warranted to be free from defects in material and workmanship. Midland will, at its sole discretion, replace or repair any part(s) which, upon evaluation and testing by Midland or an authorized service center, show a defect in workmanship or material. Valid proof of purchase must be submitted online for registration with Midland, or presented to Midland at time of claim, for warranty to be valid. This warranty is not transferable from the original owner.

Limited Warranty Period:

Non-commercial use:

- Year 1, 2 and 3 - Parts and Labour
- Year 4 and 5 - Parts

Commercial use:

- First 6 Months - Parts and Labour

Replacement parts sold to a consumer or installed by an authorized service center are warranted for a period of 90 days from date of purchase. Labour must be performed by an authorized service center unless given Midland's prior written approval. Midland will not bear any transportation or shipping fees to or from an authorized service center. Service calls, travel charges, overtime, or weekend rates, are not covered.

This warranty does NOT cover:

- a. Any repairs required as a result of any parts not supplied by Midland, and this part is responsible for the failure or malfunction;
- b. Any Equipment modified, altered, disassembled or remodelled;
- c. Any repairs required as a result of a failure to install, maintain, store, transport, or operate the Equipment in accordance with standard practices set out in the user guide;
- d. Damage that occurred after receipt of equipment, not caused by defects in workmanship or material;
- e. Normal maintenance services, as outlined in the user guide and intended for a consumer to perform;

- f. Replacement of parts made in connection with normal maintenance services including oils, adhesives, additives, fuel, filters, brushes, belts, lubricants, spark plugs, gaskets, seals, fasteners, wires, tubes, pipes, fittings, wheels, batteries, and other expendables susceptible to natural wear;
- g. Any accessory or attachment.

Any battery supplied with this Equipment is considered a consumable item and is excluded from this warranty. Batteries can be damaged by shock, shorting terminals, heat, acid spillage, neglect, and other factors. It is the customer's responsibility to take great care when handling a battery so no spillage of acid occurs which may cause corrosion.

Midland disclaims any responsibility for loss of time or use of the product, transportation, or towing costs or any other indirect, incidental, or consequential damage, inconvenience or commercial loss.

This warranty is the entire and only warranty given by Midland for Midland products or equipment. No agent or employee is authorized to extend or enlarge this warranty on behalf of Midland by any written or verbal statement or advertisement.

BENCHMARK[™]

**MIDLAND
POWER** 

Customer Service

Online: www.benchmark.midlandpowerinc.com

E-mail: support@midlandpowerinc.com

Toll Free: 1-877-528-3772

Enjoy!

Be sure to check www.benchmark.midlandpowerinc.com for updates regarding your product.





BENCHMARKTM_{MC}

BM3775