

# BENCHMARK<sup>TM</sup> MC

## 43cc/2-CYCLE 8" GAS EARTH AUGER



3 Year Limited Warranty on tool



**READ ALL INSTRUCTIONS BEFORE FIRST USE.  
KEEP THIS MANUAL FOR FUTURE REFERENCE.  
KEEP AWAY FROM CHILDREN.**



**WEAR CSA APPROVED  
EYE PROTECTION**



**WEAR EAR  
PROTECTION**



**WEAR A  
FACE MASK**

## PRODUCT SPECIFICATIONS

<b>43CC/2-CYCLE 8" GAS EARTH AUGER</b>	
Engine	43cc, 2 cycle
Fuel Tank Capacity	28.74 oz (0.85 L)
Fuel Type	Unleaded Gasoline - 87 Octane or higher
2-Cycle Oil Type	2-Cycle Oil that meets or exceeds JASO - FC Specifications
Fuel Mixture	50:1 (Gasoline: 2-Cycle Oil)
Net Weight	43cc Auger Powerhead - 21 lb / 9.4 kg
Auger Bit	8" Auger Bit - 9.7 lb / 4.4 kg

### NEED ASSISTANCE?

Call us on our toll-free customer support line:

1-833-818-4111 (Monday through Friday 9am - 5pm Eastern Standard Time)

- Technical questions
- Replacement parts
- Parts missing from package

**TABLE OF CONTENTS**

Product Specifications ..... 1  
Table of Contents ..... 2  
General Safety Instructions ..... 3-4  
Important Safety Information ..... 4-7  
Parts & Features ..... 8  
Assembly ..... 8-9  
Operation ..... 9-12  
Routine Maintenance ..... 13-14  
Troubleshooting ..... 15  
Exploded View ..... 16  
Parts List ..... 17-19  
Warranty ..... 20

## GENERAL SAFETY INSTRUCTIONS

### IMPORTANT SAFETY PRECAUTIONS

RETAIN FOR FUTURE REFERENCE AND READ CAREFULLY!

Do not attempt to install or operate this machine until you have read the safety instructions in this manual. Safety items throughout this manual are labeled with a Danger Warning, or Caution depending on the risk type.

### DEFINITIONS






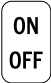
This is the safety alert symbol. It is used to alert you to potential personal injury hazards. Obey all safety messages that follow this symbol to avoid possible injury or death.

### SAFETY WARNING SYMBOLS

The following symbols can be found on your Auger. Carefully read and understand their meaning.

SYMBOL	MEANING
	<b>DANGER</b> Indicates an imminently hazardous situation which, if not avoided, will result in death or serious injury.
	<b>WARNING</b> Indicates a potentially hazardous situation which, if not avoided, could result in death or serious injury.
	<b>CAUTION</b> Indicates a potentially hazardous situation which, if not avoided, could result in minor or moderate injury.
	<b>NOTICE</b> Indicates a practice not related to personal injury which, if not avoided, may result in property damage.
	Read, understand and follow operator's manual before operating this machine. Failure to follow directions could result in serious injury.
	Extremely hot surface. Do not touch a hot muffler, gear box or cylinder, you may get burned. These parts get extremely hot from operation and remain hot for a short time after the unit is turned off.

**CONTROL AND OPERATING SYMBOLS**

SYMBOL	MEANING
	<p><b>CHOKE CONTROL</b>                      Cold Start - Push the choke lever to the left position                      Run/Warm Start - Push the choke lever to the right position</p>
	<p><b>FUEL PRIMER</b>                      Press 6 times.</p>
	<p><b>FUEL MIXTURE</b>                      50:1 (Unleaded Gas : 2 Cycle Oil)</p>
	<p><b>IGNITION SWITCH</b>                      ON / OFF</p>

**IMPORTANT SAFETY INFORMATION**

**BEFORE OPERATING EARTH AUGER**

 **DANGER**

1. Contact your local utility company in order to locate underground electrical lines or pipes prior to using this product. Failure to do so may result in serious injury or death and possible damage to equipment or property.
2. The auger engine exhaust contains carbon monoxide, an odorless and potentially deadly gas. Never start or run the auger inside an enclosed area or building. Breathing exhaust fumes can kill.

 **WARNING**

Read and follow all warnings and safety instructions. Failure to do so can result in serious injury to you or bystanders.

1. Avoid Dangerous Environments
  - a. Do not operate Earth Auger while under the influence of alcohol, medications, or drugs.
  - b. Do not operate Earth Auger when you are tired.
  - c. Do not use this Earth Auger if you are mentally or physically unable to operate safely.
2. Inspect Earth Auger for damaged parts, and make sure all fasteners and guards are in place and secure. Replace any damaged parts.
3. The handles must be mounted in accordance with the Operators Manual.
4. Never use this Earth Auger with other accessories not specifically designed for

use with this product.

5. Dress properly when operating Earth Auger.
  - a. Always wear heavy long pants, boots, gloves, and a long-sleeve shirt.
  - b. Do not wear loose clothing or jewelry that can get caught in the moving parts of the Earth Auger.
  - c. Always wear protective hair covering to contain long hair.
6. Always wear a face or dust mask if operation is dusty.
7. Always wear eye protection that meets or exceeds the requirements of ANSI Z87.1.
8. Always wear hearing protection, which meets or exceeds ANSI standards.
9. Thoroughly inspect the area where the Earth Auger is to be used and remove all foreign objects.
10. Auger blades and drilling points are sharp. Avoid contact with the auger blades and drilling points while installing auger bit, starting or transporting the unit.

## WHILE OPERATING EARTH AUGER



### CAUTION

Prolonged exposure to vibrations through use of gasoline powered hand tools could cause blood vessel or nerve damage in fingers, hands, and joints of people prone to circulation disorders or abnormal swellings. Extensive use in cold weather has been linked to blood vessel damage in otherwise healthy people. If symptoms occur such as numbness, pain, loss of strength, change in skin color or texture, or loss of feeling in the fingers, hands, or joints, discontinue the use of this tool and seek medical attention.



### WARNING

1. Maintain a firm grip on the handles with both hands while using the auger. Keep the auger bit away from your body and below waist level.
2. Stay alert. Watch what you are doing.
3. Do not operate Earth Auger if it is damaged or not securely and fully assembled.
4. Only well instructed adults should operate Earth Auger. Never allow children to operate Earth Auger.
5. Keep children away. Keep all bystanders at least 50 ft (15 m) away.
6. This Auger is only intended for earth digging. Do not use Earth Auger for any job except that for which it is intended. Severe personal injury to yourself or others can result.
7. The Auger Bit should not rotate while engine is idling. If it does rotate when engine is idling, contact technical service immediately for instructions.
8. Maintain your balance and proper footing at all times. Do not overreach.
9. Keep all parts of your body away from cutting area, the rotating auger bit and blades, and hot surfaces.

10. Always keep the throttle control on your right hand side, while the exhaust points away from your body.
11. Use extreme caution when using this unit. Bit thrust or Kick Back may occur when the spinning blade contacts an object that it does not immediately cut. A Kick Back can be violent enough to cause the unit and/or operator to be propelled in any direction, and possibly lose control of the unit. Kick Back can occur without warning if the bit snags, stalls or binds.
12. An improper or dull bit blade can cause serious personal injury. Bit blades must be sharp. Discard earth bit blades that are bent, warped, cracked, broken or damaged in any way.
13. Use only the manufacturer's replacement bit blade intended for this unit. Do not use any other bit blade. To install any other brand bit blade to this unit can result in serious personal injury.
14. Do not force the earth auger. It will do the job better and with less likelihood of a risk of injury when used at the rate for which it was designed.
15. After turning the unit off, make sure the earth auger bit has stopped before the unit is sat down.
16. A coasting bit can cause injury while it continues to spin after the engine is stopped or throttle lever is released. Maintain proper control until the bit has completely stopped rotating.
17. Never touch the area near the muffler because it is extremely hot and can cause severe burns. Never touch parts of the engine that become hot after operation.

## **FUEL SAFETY**



### **WARNING**

1. Mix and pour fuel outdoors WHERE THERE ARE NO SPARKS OR FLAMES.
2. Never fill gasoline container or the product's fuel tank inside a vehicle or in a truck bed. Accidental electrical static discharge can ignite fuel vapors which could result in serious injury or death.
3. Use a container approved for gasoline.
4. Do not smoke or allow smoking near fuel or the unit.
5. Avoid spilling fuel or oil. Wipe up all fuel spills.
6. Move at least 10 feet (3 meters) away from fueling site before starting engine.
7. Stop engine and allow to cool before removing fuel cap. Remove fuel cap slowly.
8. Store unit and fuel in area where fuel vapors cannot reach sparks or open flames from water heaters, electric motors or switches, furnaces, etc.

## **MAINTENANCE, TRANSPORTING & STORAGE OF EARTH AUGER**

1. Disconnect the spark plug before performing maintenance. Secure spark plug boot away from engine and frame to prevent arcing.
2. Maintain Earth Auger with care. Inspect unit periodically. If unit is not working properly or damaged, have it repaired by a qualified service center.

3. Check for misalignment of moving parts, binding of moving parts, broken parts, mounting, and any other condition that may affect its operation.
4. Any part that is damaged should be properly repaired or replaced by a qualified service center.
5. Use only genuine replacement parts and accessories. Use of any parts or accessories could lead to injury, damage to the unit, and will void your warranty.
6. Do not remove or modify any parts. Removing or modifying parts could lead to injury, damage the Earth Auger and will void the warranty.
7. Keep handles dry, clean, and free from oil and grease.
8. Allow engine to cool and empty the fuel tank into an approved container before storing or transporting in vehicle. Use up remaining fuel in the carburetor by starting the engine and letting it run until it stops.
9. When not in use, store unit indoors in a dry location. Store Earth Auger above the reach of children or in a locked area out of the reach of children.
10. For cold weather operation, store the unit in a cool environment to minimize the possibility of condensation which could lead to unsatisfactory product performance.
11. When preparing the Earth Auger for storage or when Earth Auger will not be used for 30 days or more:
  - a. Inspect and clean the Earth Auger thoroughly.
  - b. Lightly oil all external metal surfaces.
  - c. Remove the spark plug, place a few drops of 2-cycle engine oil into the cylinder. Pull the recoil starter several times to distribute the oil. Reinstall the spark plug.
  - d. Inspect and clean air filter as required.

**NOTE:** To prevent fuel gum deposits in the carburetor and fuel system, it is recommended to use fuel stabilizer. Follow the stabilizer manufacturer's instructions. Run the engine at least 5 minutes after adding stabilizer.

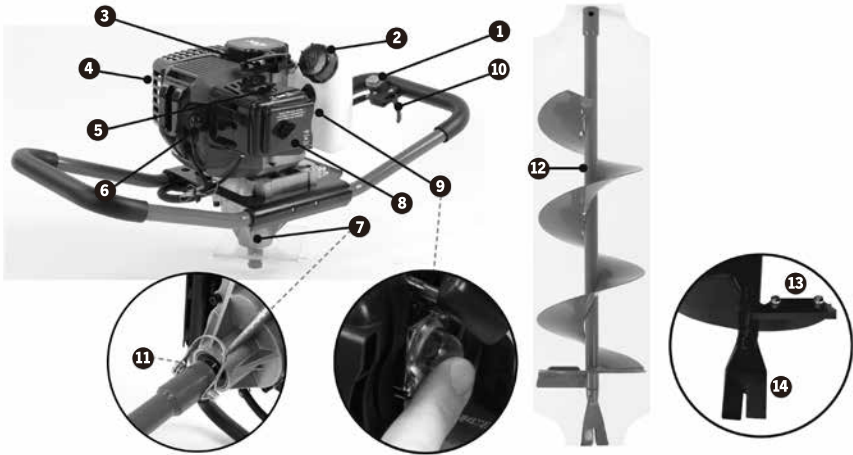


## **WARNING**

Store unit and fuel in area where fuel vapors cannot reach sparks or open flames from water heaters, electric motors or switches, furnaces, etc.



## PARTS & FEATURES



### Powerhead

- |                           |                     |
|---------------------------|---------------------|
| 1. On/Off Ignition Switch | 6. Spark Plug       |
| 2. Fuel Tank              | 7. Gear Box         |
| 3. Recoil Starter Handle  | 8. Air Filter Cover |
| 4. Muffler                | 9. Fuel Primer Bulb |
| 5. Choke Lever            | 10. Throttle Lever  |

### 8" Auger Bit

- |                                  |
|----------------------------------|
| 11. Type D Pin                   |
| 12. 8" Auger Body                |
| 13. Earth Blade (replaceable)    |
| 14. Fishtail Point (replaceable) |

## ASSEMBLY

### PARTS INCLUDED WITH THE EARTH AUGER

- |                         |               |
|-------------------------|---------------|
| 1. 43cc Auger Powerhead | 4. Type D Pin |
| 2. 8" Auger Bit         | 5. Manual     |
| 3. Fishtail Point       |               |

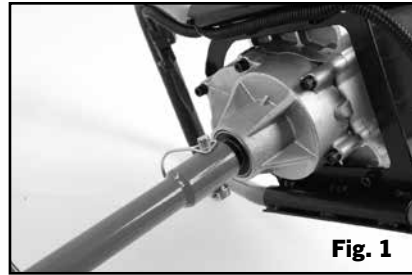
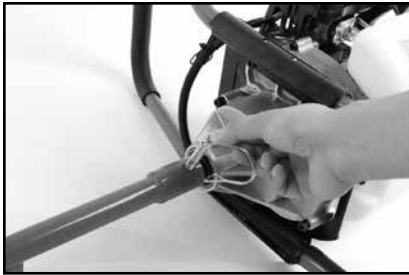


### WARNING

Do not operate Earth Auger if it is damaged or not securely and fully assembled.

### A. TO ASSEMBLE THE AUGER BIT

Hand tighten the Fishtail Point into the thread end of the auger body. Avoid contact with the Earth Blade and cutting edge of the Fishtail Point.



## B. TO ASSEMBLE AUGER BIT TO POWERHEAD

1. Move the On/Off Switch to the off position.
2. Remove the Spark Plug boot from the Spark Plug and secure the boot away from the engine and frame.
3. Insert the Powerhead output shaft into the auger bit adapter and align the top hole of the auger bit to the hole at the output shaft.
4. Insert the type D pin through the hole of the shaft of engine and auger body, then close the type D pin for locking.
5. Reinstall the Spark Plug boot onto the Spark Plug.

## OPERATION

### A. BEFORE STARTING ENGINE:

#### MIXING GASOLINE / 2-CYCLE OIL



#### WARNING

Do not smoke or allow smoking near fuel or the Earth Auger. Mix and pour fuel outdoors WHERE THERE ARE NO SPARKS OR FLAMES.

The 2-cycle engine on your unit requires that gasoline and 2-cycle engine oil be pre-mixed before adding to the unit's fuel tank. To mix the gasoline/2-cycle oil:

1. Use FRESH unleaded gasoline with an octane rating of 87 or higher. Do not use gasoline containing more than 10% ethanol. We recommend the continuous use of a fuel additive/stabilizer to counteract the effects of ethanol. These additives also prolong the shelf life of gasoline.

**NOTE:** Use of gasoline containing more than 10% ethanol can damage the engine.

2. Always use 2-cycle oil that meets or exceeds JASO - FC specifications and is intended for mixing at a gasoline/oil ratio of 50:1.
3. Do not use automotive or 2-cycle marine outboard oil. These will damage your unit's engine and void the warranty.
4. Always mix the gasoline and 2-cycle oil in a container approved for gasoline. Never mix fuel directly in the unit's fuel tank.
5. Follow instructions on 2-cycle oil container for mixing fuel. Mix gasoline and 2-cycle oil at a ratio of 50:1. A mixture with a 50:1 ratio is obtained by mixing 1 gallon (3.8 liters) of gasoline with 2.6 ounces of oil (77 ml). After adding oil to

gasoline, shake container momentarily to ensure proper mixing.

6. Mix only enough fuel for your immediate needs. Do not store pre-mixed fuel.
7. Stop engine and allow to cool before refueling.
8. To fill the unit's fuel tank with the gasoline/oil mixture, place the Powerhead upright on the ground or on a sturdy bench and wipe and any debris from around the fuel cap.
9. Remove fuel cap slowly and use a funnel to pour the mixture into the tank, and replace the fuel cap.
10. Avoid spilling fuel or oil. Wipe up all fuel spills.
11. Move at least 10 feet (3 meters) away from fueling site before starting engine.

## **B. STARTING ENGINE:**



### **WARNING**

1. Ensure that the four handle retaining pins are fully engaged into the Powerhead frame and that the handle bars are secure to the Powerhead frame.
2. Check that all guards and fasteners are in place and secure.
3. Keep all parts from your body and clothing away from drilling location, Auger Bit and Powerhead.
4. Ensure that no grass or other debris is wrapped around any part of the Auger Bit, Powerhead or handles.
5. The Powerhead can cause a sudden jerk on the Recoil Starter Handle due to the engine compression and ignition. Maintain a firm grip on the Powerhead handle and Recoil Starter Handle and follow the instruction below to avoid injury.
6. Ensure that the unit is in a stable and controllable position before pulling the Recoil Starter Handle. When the unit starts, raise the unit to a vertical position and maintain control of the unit with both hands on the handle bars and the Muffler exhaust port facing away from your body before engaging the Throttle Lever.
7. Never leave the auger running while unattended.
8. Never carry the unit between drilling locations while engine is running.

## **Starting Position**

1. Place the right handle bar flat on the ground with the throttle in the upward position. Place left hand on left handle bar (see Figure 2).
2. While standing on the operating side of the unit place your right foot onto the right handle bar and grip the left handle bar with your left hand. The Auger Bit will be pointing to your left.



**Fig. 2**

3. Tilt the auger to the right so that the Auger Bit is off the ground.
4. See Cold, Warm, or Flooded Engine Starting procedures below.
5. When the engine starts, raise the unit upright and with the auger bit vertical and above the location of operation for drilling.
6. Maintain a firm grip with both hands on the handle bars and with the exhaust port facing away from your body before engaging the throttle.



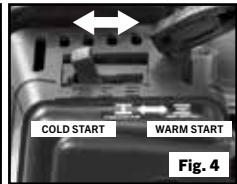
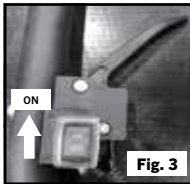
## WARNING

Keep all parts of your body away from cutting area, the rotating Earth Auger bit and blades, and hot surfaces.

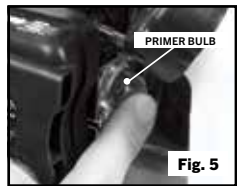
### Cold Starting The Engine

**NOTE:** DO NOT squeeze the throttle lever until engine starts and runs.

1. Place the unit on a flat surface.
2. Move the On/Off Ignition Switch to the "ON" position (see Fig. 3).
3. Move the Choke Lever to the "COLD START" position (see Fig. 4).
4. Press the Primer Bulb slowly 6 times (see Fig. 5).



**NOTE:** Follow the instruction in the Starting Position section above for the safe auger position during and after starting the engine.



5. Pull the Recoil Starter Handle sharply until the engine starts and runs.
6. After engine starts, move choke lever to the half position gradually, and after engine runs for 15 seconds, move choke lever to "Run/Warm Start" position (see Figure 4).

**NOTE:** When the weather gets cold, please allow the engine to warm up at idle for longer period of time, before moving the Choke Lever to RUN/WARM START position.

### Warm Starting The Engine

1. Place the unit on a flat surface.
2. Move the On/Off Ignition Switch to the "ON" position

**NOTE:** Follow the instruction in the Starting Position section above for the safe auger position during and after starting the engine.

3. With the Choke Lever in "Run/Warm Start" position, use left hand to engage the Throttle Lever, right hand to pull the Recoil Starter Handle sharply until the engine starts and runs.

### C. STARTING A FLOODED ENGINE

1. Place the unit on a flat surface.
2. Move the On/Off Ignition Switch to the "ON" position

**NOTE:** Follow the instruction in the Starting Position section above for the safe auger position during and after starting the engine.

3. With the Choke Lever in "Run/Warm Start" position, use right foot to hold the Throttle Lever fully depressed and pull the starter handle repeatedly until engine starts and runs. This could require pulling the starter handle many times, depending on how badly the unit is flooded.
4. If the engine fails to start, replace the spark plug with a new clean and dry spark plug.
5. Repeat steps 1-3.

**NOTE:** If the unit still doesn't start, refer to the Troubleshooting section of this manual or call toll free: 1-833-818-4111

#### **D. STOPPING THE AUGER**

1. Place the unit on a flat surface.



#### **CAUTION**

The Auger Bit will continue to rotate for a few seconds after the engine has stopped.

1. Release the Throttle Lever and allow the engine to idle for a few moments.
2. Move the On/Off Ignition Switch to the "OFF" position.

#### **E. OPERATING THE EARTH AUGER**



#### **WARNING**

While drilling holes, do not force body weight to auger powerhead. Maintain a firm grip on the handles and maintain solid footing.

1. Start the engine following the Starting Engine procedures.
2. Place the tip of the Auger Bit at desired location and hold the unit in the vertical position.
3. Engage the throttle lever, and first start digging a hole at a low speed.
4. Gradually increase the speed as the Auger Bit enters into the soil.
5. As the auger penetrates the soil, you should occasionally lift the auger up vertically to help disperse the fractured soil. This will keep the auger hole free of loose soil and will prevent the auger from becoming stuck in the soil. This technique will reduce the time to dig a hole and will prevent overworking the engine.



#### **CAUTION**

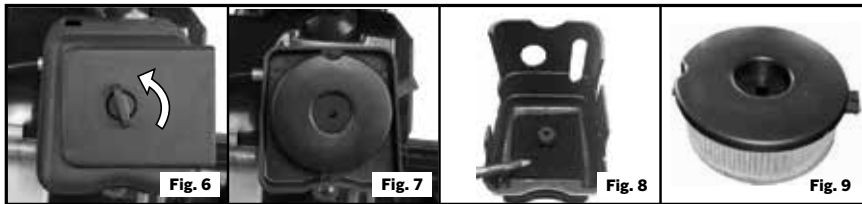
If the Auger Bit will not turn in a hole, turn engine off and remove Auger Bit from the hole. Check Auger Bit for damage and remove any debris from Auger Bit or hole. Secure Spark Plug boot away from the engine and frame to alleviate potential arcing.

## ROUTINE MAINTENANCE

### A. AIR FILTER

**⚠ WARNING** Disconnect the spark plug before performing maintenance.

Your Auger has been equipped with two air filters inside the housing. Accumulated debris and dust in the air filter will reduce engine performance, increase fuel consumption and increases the risk of engine damage. Clean the air filters every 5 hours of operation. It may be necessary to clean the air filter more often in dry conditions due to a large amount of airborne debris.



1. Before removing air filter cover, brush away any loose dirt or debris on and around the pre-filter located in the outer filter housing.
2. Remove air filter by unscrewing the retaining fastener. (Fig. 6)
3. Remove and clean foam filter. (Fig. 8)
  - Light surface dust can readily be removed by tapping the filter.
  - Heavy deposits should be washed out in soap and water. Squeeze out any remaining water and allow the filter to completely dry.

**⚠ WARNING**  
Never clean filter in gasoline or other flammable solvents.

4. Add a drop of thin oil to the filter and replace it.
5. Remove the paper air filter element (Fig 9) Clean filter by gently tapping it on a flat surface. If very dirty, replace with a new filter.
6. Reassemble the filter element and air filter cover.

**NOTE:** Ensure that the air filter cover knob is securely tightened before every use. (Fig 6)

### B. SPARK PLUG

Inspect the Spark Plug after every 10-15 hours of use; adjust Spark Plug gap and replace Spark Plug as necessary. Replace Spark Plug every year to maintain engine performance and easy starting. To inspect or replace the Spark Plug:

1. Remove the insulated Spark Plug boot.
2. Using appropriate tools, remove the spark plug by turning counter-clockwise.
3. Clean and adjust the Spark Plug gap to 0.024-0.031 in. (0.6-0.8 mm).
4. Replace any worn Spark Plug with a recommended replacement (see Product Specifications).

5. Apply anti-seize compound to the Spark Plug threads only following the manufacturer's instructions.
6. Install the Spark Plug finger tight in the cylinder head, then tighten. Do not over tighten to 25-30 N.m.
7. Replace the insulated Spark Plug boot.

### C. Earth Blade and Fishtail Point

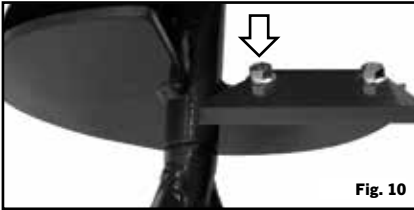


Fig. 10

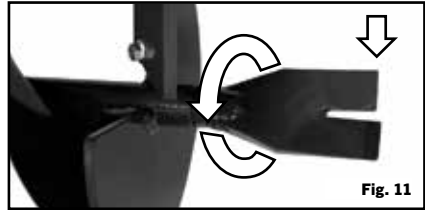


Fig. 11

### WARNING

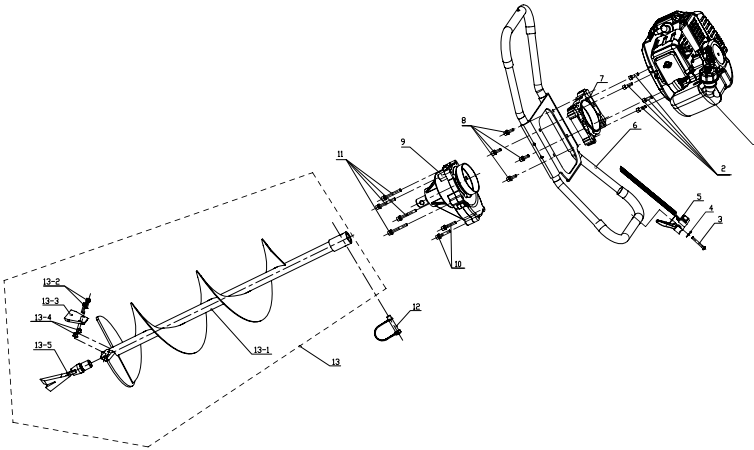
1. Use only the manufacturer's replacement part intended for this Auger Bit. Do not use any other Earth Blade or Fishtail Point. To install any other brand part to this Auger Bit can result in serious personal injury. Replace worn or damaged Earth Blade or Fishtail Point.
2. Auger blades and drilling points are sharp. Avoid contact with the auger blades and drilling points while replacing or sharpening and while installing auger bit, starting or transporting the unit.
3. Remove the mounting hardware (bolts and nuts), and take off the earth blade (see Figure 10).
4. Install new Earth Blade with new mounting hardware.
5. Tighten the bolts to secure blade.
6. To Replace the Fishtail Point, unscrew the point using an adjustable wrench to grip the side of the Fishtail Point. Replace with new part (see Figure 11).

## TROUBLESHOOTING

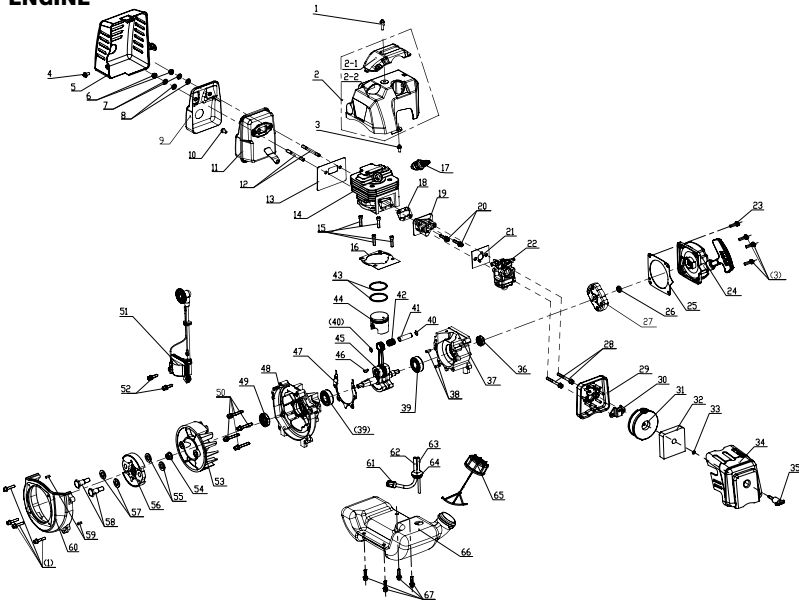
PROBLEM	POSSIBLE CAUSE(S)	SOLUTION(S)
Engine will not start.	<ol style="list-style-type: none"> <li>1. Ignition Switch in the "OFF" position.</li> <li>2. Engine flooded.</li> <li>3. Fuel Tank empty.</li> <li>4. Spark Plug not firing.</li> <li>5. Fuel not reaching carburetor.</li> <li>6. Carburetor requires adjustment.</li> </ol>	<ol style="list-style-type: none"> <li>1. Move Ignition Switch to the ON position.</li> <li>2. See Starting A Flooded Engine in OPERATION section.</li> <li>3. Fill tank with correct fuel mixture.</li> <li>4. Replace Spark Plug.</li> <li>5. Check for kinked or split fuel line; repair or replace.</li> <li>6. Call toll free phone number below for technical assistance.</li> </ol>
Engine will not accelerate, lacks power or stalls.	<ol style="list-style-type: none"> <li>1. Choke on.</li> <li>2. Air filter dirty.</li> <li>3. Spark Plug fouled.</li> <li>4. Carburetor requires adjustment.</li> <li>5. Carbon build-up on Muffler outlet screen.</li> <li>6. Compression low.</li> </ol>	<ol style="list-style-type: none"> <li>1. Move Choke Lever to "Run/Warm Start" position to turn off choke.</li> <li>2. Clean air filter.</li> <li>3. Clean or replace Spark Plug</li> <li>4. Call toll free phone number below for technical assistance.</li> <li>5. Call toll free phone number below for technical assistance.</li> <li>6. Call toll free phone number below for technical assistance.</li> </ol>
Engine smokes excessively.	<ol style="list-style-type: none"> <li>1. Fuel mixture incorrect.</li> <li>2. Air filter dirty.</li> <li>3. Carburetor requires adjustment.</li> </ol>	<ol style="list-style-type: none"> <li>1. Empty Fuel Tank and refill with correct fuel mixture.</li> <li>2. Clean or replace air filter.</li> <li>3. Call toll free phone number below for technical assistance.</li> </ol>
Engine runs hot.	<ol style="list-style-type: none"> <li>1. Fuel mixture incorrect.</li> <li>2. Spark Plug incorrect.</li> <li>3. Carburetor requires adjustment.</li> <li>4. Carbon build-up on muffler outlet screen.</li> </ol>	<ol style="list-style-type: none"> <li>1. See Mixing Gasoline / 2-Cycle Oil in OPERATION section.</li> <li>2. Replace with correct Spark Plug.</li> <li>3. Call toll free phone number below for technical assistance.</li> <li>4. Call toll free phone number below for technical assistance.</li> </ol>
Engine will not idle properly.	<ol style="list-style-type: none"> <li>1. Carburetor requires adjustment.</li> <li>2. Crankshaft seals worn.</li> <li>3. Compression low.</li> </ol>	<ol style="list-style-type: none"> <li>1. Call toll free phone number below for technical assistance.</li> <li>2. Call toll free phone number below for technical assistance.</li> <li>3. Call toll free phone number below for technical assistance.</li> </ol>
Auger bit turns while engine is idle	Idle speed too high. Carburetor requires adjustment.	Call toll free phone number below for technical assistance.
Auger bit jumps or drills slowly.	Worn Earth Blade or Fishtail Point.	Replace it with corrected part from manufacturer.



EXPLODED VIEW



ENGINE



## PARTS LIST

Key #	Part Code	Part Name	Quantity
1	AVCG011001	Two-Cycle Engine, 43 cc	1
2	AVCG011002	Bolt, M6 × 20	4
3	AVCG011003	Bolt, M5 × 40	1
4	AVCG011004	Boat Washer, Ø6.5*Ø18*1	1
5	AVCG011005	Throttle Cable And Trigger Assembly	1
6	AVCG011006	Handle Bar Assembly	1
7	AVCG011007	Gear Box Seat	1
8	AVCG011008	Bolt Assembly, M6× 20	4
9	AVCG011009	Gear Case Assembly	1
10	AVCG011010	Bolt Assembly, M6 × 35	2
11	AVCG011011	Bolt Assembly, M6 × 50	4
12	AVCG011012	Clevis Pin With Double Wire	1
13	AVCG011013	Auger Assembly (Red)	1
13-1	AVCG011014	Auger Bit (Red)	1
13-2	AVCG011015	Bolt, M6 × 18 (Red)	2
13-3	AVCG011016	Earth Blade (Red)	1
13-4	AVCG011017	Mut, M6 (Red)	2
13-5	AVCG011018	Fishtail Bit Point (Red)	1
<b>ENGINE</b>			
1	AVCG011019	Bolt Assembly, M5 × 23	5
2	AVCG011020	Cylinder Shield Assembly	1
2-1	AVCG011021	Cylinder Shield	1
2-2	AVCG011022	Cylinder Shield, Cover	1
3	AVCG011023	Bolt Assembly, M5 × 16	4
4	AVCG011024	Bolt Assembly, M5 × 12	1
5	AVCG011025	Muffler Cover	1
6	AVCG011026	Nut, M6	2
7	AVCG011027	Spring Washer, Ø6	2
8	AVCG011028	Washer, Ø6	2
9	AVCG011029	Muffler Cover	1
10	AVCG011030	Screw, M5×10	1
11	AVCG011031	Muffler Assembly	1
12	AVCG011032	Stud Bolt, AM6 × 63	2
13	AVCG011033	Muffler Assembly	1

14	AVCG011034	Cylinder	1
15	AVCG011035	Bolt, M5 × 20	4
16	AVCG011036	Gasket, Cylinder	1
17	AVCG011037	Spark Plug, L6	1
18	AVCG011038	Gasket, Cylinder Intake	1
19	AVCG011039	Cylinder Intake	1
20	AVCG011040	Bolt Assembly, M5 × 25	2
21	AVCG011041	Gasket, Carburetor	1
22	AVCG011042	Carburetor Assembly	1
23	AVCG011043	Bolt Assembly, M5 × 20	1
24	AVCG011044	Starter Assembly	1
25	AVCG011045	Gasket, Recoil Starter	1
26	AVCG011046	Nut, M8	1
27	AVCG011047	Starting Jaw Assembly	1
28	AVCG011048	Bolt Assembly, M5 × 55	2
29	AVCG011049	Housing, Air Filter	1
30	AVCG011050	Bracket, Air Filter	1
31	AVCG011051	Element, Air Filter	1
32	AVCG011052	Foam Element, Pre-Filter	1
33	AVCG011053	O Washer 3.15*1.8	1
34	AVCG011054	Cover, Air Filter	1
35	AVCG011055	Knob, Screw	1
36	AVCG011056	Oil Seal, Ø12 × Ø22 × 7	1
37	AVCG011057	Right Crankcase	1
38	AVCG011058	Pin, B5 × 12	2
39	AVCG011059	Bearing, 6202	2
40	AVCG011060	Circlip, Piston Pin	2
41	AVCG011061	Piston Pin	1
42	AVCG011062	Needle Bearing, K10 × 13 × 15	1
43	AVCG011063	Piston Ring	2
44	AVCG011064	Piston	1
45	AVCG011065	Crankshaft / Connecting Rod Assembly	1
46	AVCG011066	Key, 3 × 5 × 13	1
47	AVCG011067	Gasket, Crankcase	1
48	AVCG011068	Left Crankcase	1
49	AVCG011069	Oil Seal, Ø15 × Ø30 × 7	1
50	AVCG011070	Bolt Assembly, M5 × 35	4

51	AVCG011071	Ignition Coil	1
52	AVCG011072	Bolt Assembly, M5 × 20	2
53	AVCG011073	Rotor Assembly	1
54	AVCG011074	Nut, M8	1
55	AVCG011075	Washer	2
56	AVCG011076	Clutch Assembly	1
57	AVCG011077	Washer, Spring	2
58	AVCG011078	Bolt, Clutch Assembly	2
59	AVCG011079	Pin, B4 × 10	2
60	AVCG011080	Magneto Cover	1
61	AVCG011081	Fuel Filter	1
62	AVCG011082	Fuel Tube	1
63	AVCG011083	Fuel Tube, Short	1
64	AVCG011084	Seal, Fuel Tube	1
65	AVCG011085	Fuel Tank Cap	1
66	AVCG011086	Fuel Tank	1
67	AVCG011087	Bolt Assembly, M5 × 18	4

## **WARRANTY**

### **BENCHMARK GAS EARTH AUGER WARRANTY**

If this Benchmark tool fails due to a defect in material or workmanship within three years from the date of purchase, it has a 3-year repair warranty with the original bill of sale. This warranty does not include expendable parts including but not limited to blades, brushes, belts, light bulbs and/or batteries. This warranty covers defects in material or workmanship only. It does not cover normal wear and tear, failure due to abuse/misuse, or defects caused by careless or accidental mishandling. If this Benchmark product is used for commercial or rental purposes, this warranty does not apply. For use at the consumer level. The warranty is not for industrial or commercial applications.

# 43cc/2-CYCLE 8" GAS EARTH AUGER



3 Year Limited Warranty on tool

**BENCHMARK™**  
MC

**BENCHMARK TOOLS CANADA**  
ST. JACOBS, ONTARIO N0B 2N0  
© 2021 Home Hardware Stores Limited

**CUSTOMER SERVICE/TECH SUPPORT**  
1-833-818-4111

**5140-100**

Made in China



\* This Benchmark™ product carries a three (3) year LIMITED warranty against defects in workmanship and materials. See Owner's Manual for full details.



**READ ALL INSTRUCTIONS BEFORE FIRST USE.  
KEEP THIS MANUAL FOR FUTURE REFERENCE.  
KEEP AWAY FROM CHILDREN.**



**WEAR CSA APPROVED  
EYE PROTECTION**



**WEAR EAR  
PROTECTION**



**WEAR A  
FACE MASK**