

Radley®

43 cc • 2 Cycle

Front Tine

Rototiller

Owner's Manual

3 Year *limited*
warranty



EPA



READ ALL INSTRUCTIONS BEFORE FIRST USE.
KEEP THIS MANUAL FOR FUTURE REFERENCE.
KEEP AWAY FROM CHILDREN.

PRODUCT SPECIFICATIONS

Engine:	43 cc, 2-cycle, full-crank
Idle speed:	2,800-3,000 RPM
Tilling width:	7"-10" (17.8cm - 25.4cm)
Tilling depth:	Up to 5" (12.7cm)
Fuel tank capacity:	28 oz (840 ml)
Fuel type:	Unleaded gasoline – 89 octane or higher
Full speed:	8,000-9,000 RPM
2-Cycle oil type:	2-Cycle oil that meets or exceeds JASO – FC specifications
Fuel Mixture:	50:1 (gasoline: 2-cycle oil)
Spark Plug:	NHSP LD L6, NGK BM6A CHAMPION - CJ8 or equivalent
Net Weight:	33 lbs (15 kg)

IMPORTANT

This manual provides complete instructions for safely operating, and maintaining your Rototiller. Read and save these instructions.

WARNING

CONTAINS LEAD. May be harmful if eaten or chewed. May generate dust containing lead. Wash hands after use. Keep out of reach of children.



WARNING

This product can expose you to chemicals including lead, which is known to the State of California to cause cancer and birth defects or other reproductive harm. For more information go to www.P65Warnings.ca.gov.

If you have a question or problem call toll free: 1-833-818-4111

TABLE OF CONTENTS

Product specifications1
Table of contents2
Safety instructions3-5
Safety definitions6-7
Know your 43cc 2-Cycle Front Tine Rototiller8
Assembly9-11
Operation12-15
Maintenance16-17
Storage17
Troubleshooting18
Exploded view19-22
Parts list23-28
Warranty29

IMPORTANT SAFETY INSTRUCTIONS

SAVE ALL INSTRUCTIONS

BEFORE OPERATING ROTOTILLER

NOTE: READ AND UNDERSTAND ALL INSTRUCTIONS BEFORE OPERATING ROTOTILLER. Be thoroughly familiar with the controls and the proper use of the equipment. Know how to stop the unit and disengage the controls quickly.



WARNING

Read and follow all warnings and safety instructions. Failure to do so can result in serious injury to you or bystanders.

1. Avoid Dangerous Environments

- a. Do not operate rototiller while under the influence of alcohol, medications, or drugs.
- b. Do not operate rototiller when you are tired.
- c. Do not use this rototiller if you are mentally or physically unable to operate safely.

2. Inspect rototiller for damaged parts, and make sure all fasteners and guards are in place and secure. Replace any damaged parts.

3. Dress properly when operating rototiller.

- a. Always wear heavy long pants, boots, gloves, and a long-sleeve shirt.
- b. Do not wear loose clothing or jewelry that can get caught in the moving parts of the rototiller.
- c. Always wear gloves and substantial footwear when working outside .
- d. Always wear protective hair covering to contain long hair.

4. Always wear a face or dust mask if operation is dusty.

5. Always wear eye protection that meets or exceeds the requirements of ANSI Z87.1.

6. Always wear hearing protection which meets or exceeds ANSI standards.

7. Thoroughly inspect the area where the rototiller is to be used and remove all foreign objects.

8. Keep the area of operation clear of all persons, particularly small children, and pets.

9. Never allow children to operate the equipment. Never allow adults to operate the equipment without proper instruction.

10. Keep in mind that the operator or user is responsible for accidents or hazards occurring to other people, their property, and themselves.

WHILE OPERATING ROTOTILLER

1. Stay alert. Use common sense. Watch what you are doing.

2. Do not operate rototiller if it is damaged or not securely and fully assembled.

3. Never operate the rototiller without good visibility or light.

4. Never operate the machine without proper guards, plates, or other safety protective devices in place.

5. Keep all parts of your body away from the rotating tines. Do not put hands or feet near or under rotating parts.
6. Keep children and pets away.
7. Use only for jobs explained in this manual. Do not use rototiller for any job except that for which it is intended.
8. Maintain your balance and proper footing at all times. Do not overload the machine capacity by attempting to till too deep.
9. After striking a foreign object, stop the engine, remove the wire from spark plug, thoroughly inspect the machine for any damage, and repair the damage before restarting and operating the machine.
10. Never leave the machine unattended. Stop the engine when leaving the operating position.
11. Stop the engine before unclogging the tines, and when making any repairs, adjustments, and inspections.
12. Be careful when tilling in hard ground. The tines may catch in the ground and propel the rototiller forward. If this occurs, let go of the handles and do not restrain the machine.
13. Use extreme caution when pulling the machine towards you.
14. Do not force rototiller. It will do the job better and with less likelihood of a risk of injury at the rate for which it was designed.



DANGER

Never start or run the unit inside a closed room or building; breathing exhaust fumes can kill.

15. Exercise extreme caution when operating on or crossing gravel drives, walks, or roads. Stay alert for hidden hazards or traffic.
16. Exercise caution to avoid slipping or falling.
17. If the unit should start to vibrate abnormally, stop the engine and check immediately for the cause. Vibration is generally a warning sign of trouble.
18. Never operate the machine at high transport speeds on hard or slippery surfaces.
19. Start the engine carefully according to instructions and with feet well away from the tines.
20. Never pick up or carry a machine while the engine is running.



CAUTION

Prolonged exposure to vibrations through use of gasoline powered hand tools could cause blood vessel or nerve damage in fingers, hands, and joints of people prone to circulation disorders or abnormal swellings. Extensive use in cold weather has been linked to blood vessel damage in otherwise healthy people. If symptoms occur such as numbness, pain, loss of strength, change in skin color or texture, or loss of feeling in the fingers, hands, or joints, discontinue the use of this tool and seek medical attention.

FUEL SAFETY

1. Mix and pour fuel outdoors WHERE THERE ARE NO SPARKS OR FLAMES.
2. Use a container approved for gasoline.
3. Do not smoke or allow smoking near fuel or the rototiller.
4. Avoid spilling fuel or oil. Wipe up all fuel spills.
5. Move at least 10 feet (3 meters) away from fueling site before starting engine. Do not refuel a hot engine. Do not refuel a running engine.
6. Stop engine and allow to cool before removing fuel cap. Remove fuel cap slowly.
7. Never store engine with fuel in the tank indoors. Fuel and fuel vapors are highly flammable.
8. Replace all fuel tank and container caps securely.




MAINTENANCE & STORAGE OF ROTOTILLER

1. Stop the engine, and disconnect the spark plug before servicing, cleaning, or performing maintenance on the unit. Never attempt to make any adjustments while the engine is running.
2. Maintain rototiller with care. Inspect rototiller periodically. Keep machine, attachments, and accessories in safe working condition. If rototiller is not working properly or damaged, have it repaired by a qualified service center.
3. Check for misalignment of moving parts, binding of moving parts, broken parts, and any other condition that may affect its operation. Check shear bolts, engine mounting bolts, and other bolts at frequent intervals for proper tightness to be sure the equipment is in safe working condition.
4. Keep guards in place and in working order.
5. A guard or other part that is damaged should be properly repaired or replaced by a qualified service center.
6. Use only identical manufacturer's replacement parts and accessories. Use of any other parts may create a hazard or cause product damage.
7. Do not remove or modify any parts. Removing or modifying parts could lead to injury, damage the machine and will void the warranty.
8. Keep handles dry, clean, and free from oil and grease.
9. Allow engine to cool and empty the fuel tank before storing or transporting in vehicle. Use up remaining fuel in the carburetor by starting the engine and letting it run until it stops. If the fuel tank has to be drained, do it outdoors.
10. When not in use, store rototiller indoors in a dry location. Store rototiller above the reach of children or in a locked area out of the reach of children.
11. Store unit and fuel in area where fuel vapors cannot reach sparks or open flames from water heaters, electric motors or switches, furnaces, etc.
12. Always refer to the operator's manual for important details if the rototiller is to be stored for an extended period
13. Follow manufacturer's recommendations for safe loading, unloading, transport, and storage of machine.

SAFETY DEFINITIONS IMPORTANT SAFETY INFORMATION









SAFETY ALERT SYMBOLS:

The information listed below should be read and understood by the operator. We utilize the symbols below to allow the reader to recognize important information about their safety.






 DANGER	Indicates an imminently hazardous situation which, if not avoided, will result in death or serious injury.
 WARNING	Indicates a potentially hazardous situation which, if not avoided, could result in death or serious injury.
 CAUTION	Indicates a potentially hazardous situation which, if not avoided, may result in minor or moderate injury.
NOTICE	Indicates a practice not related to personal injury which, if not avoided, may result in property damage.

SAFETY WARNING SYMBOLS:

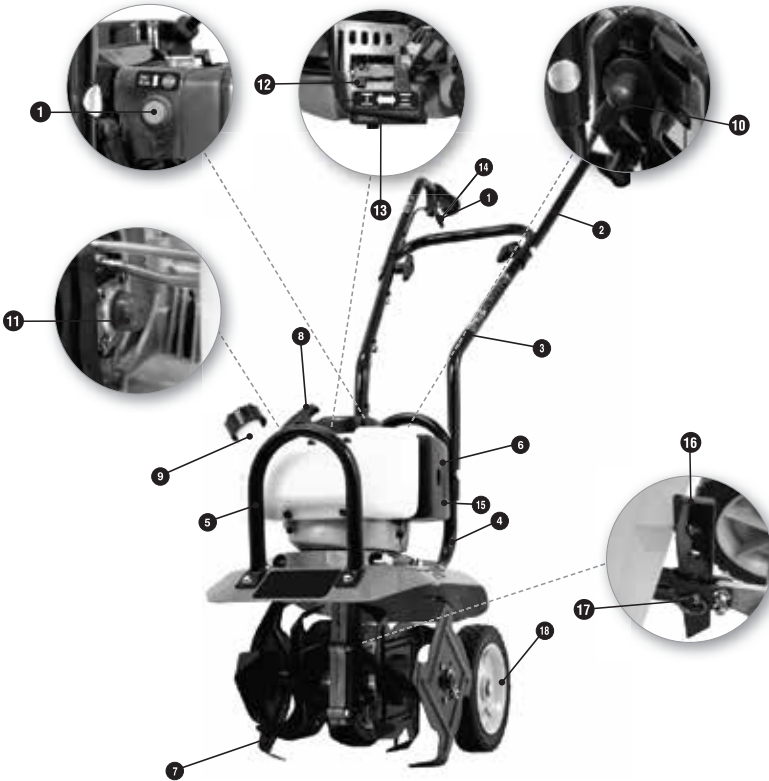
The following symbols may be found on your rototiller. Carefully read and understand their meaning.

	Look for this symbol to point out important safety precautions. It means: Attention! Become Alert! Your Safety Is Involved.
	Read operator's manual before operating this machine. Failure to follow directions could result in serious injury.
	Always wear eye protection that meets or exceeds the requirements of ANSI Z87.1. Wear hearing protection. Wear breathing protection.
	Do not use if children or bystanders are present.
	Keep hands, feet, and clothing away from rotating tines. Contact with rotating tines may result in serious injury.
	Engine exhaust contains carbon monoxide, an odorless and deadly gas. NEVER run unit indoors or in a poorly ventilated area.
	Extremely hot surface. Do not touch a hot muffler, gear box or cylinder, you may get burned. These parts get extremely hot from operation and remain hot for a short time after the unit is turned off.
	To reduce risk of fire, clean spilled gas and oil and keep unit free from debris. Gasoline is extremely flammable. Allow machine to cool completely before refueling.

CONTROL AND OPERATING SYMBOLS:

	<p>Choke control: Choke/cold start • Warm start/run</p>
	<p>Fuel primer: Press 6 times.</p>
	<p>Ignition switch: ON/RUN OFF/STOP</p>
	<p>Fuel mixture: 50:1 (Unleaded Gas: 2 Cycle oil)</p>
	<p>Throttle control: SLOW FAST</p>

KNOW YOUR 43CC 2-CYCLE FRONT TINE ROTOTILLER



1. Ignition switch
2. Upper handle
3. Middle handle
4. Lower handle
5. Front carry handle
6. Engine
7. Tines
8. Recoil starter handle
9. Fuel tank

10. Spark Plug
11. Fuel Primer Bulb
12. Choke
13. Air Filter Cover
14. Throttle Trigger
15. Muffler
16. Drag Stake
17. Detent Pin
18. Transport Wheels

ASSEMBLY

If you need assistance or find any parts missing, CALL TOLL FREE: 1-833-818-4111

PARTS INCLUDED WITH ROTOTILLER

- Middle handle (1)
- Upper handles (2)
- Wheel nuts and bolts (4 ea.)
- Cable ties (3)
- Operator's manual
- 2.6 fl. oz US bottle of 2-Cycle engine oil (1)

WARNING

Do not operate rototiller if it is damaged or not securely and fully assembled.

HOW TO UNPACK ROTOTILLER FROM CARTON

1. Remove all parts and packing components.
2. Use a utility knife to cut all 4 vertical edges. Lay the side panels flat around the rototiller.
3. Remove inner components and packaging.

CAUTION

Use care when removing parts not to damage any cables or wires that are attached to the parts.

4. Roll the unit out from the carton, and place on a hard level surface.

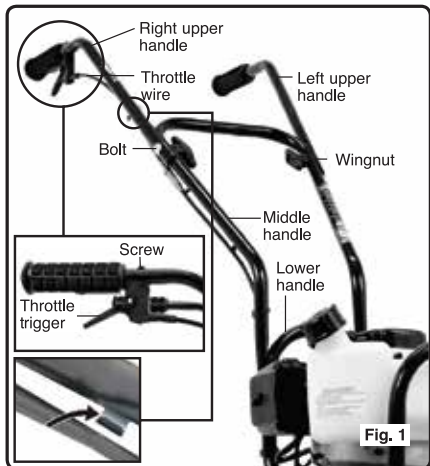
HOW TO ASSEMBLE THE HANDLES AND DRAG STAKE

1. Place the rototiller upright with tines and wheels on a hard level surface. Wheels should be set in the lowest position.

WARNING

Do NOT place the rototiller on a high surface where it can fall and cause property damage or personal injury.

2. Assemble the middle handle to the lower handle with the 2 bolts and wing nuts. Refer to Figure 1. Firmly hand tighten the wing nuts.
3. Attach the upper handles to the middle handle using the two remaining bolts and wing nuts. Refer to Figure 1.
4. Assemble the throttle trigger to the right upper handle with the screw. Use included wrench. See Figure 1.

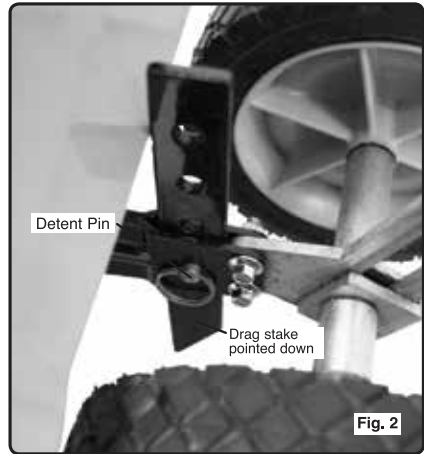


5. The drag stake is shipped with the point facing upwards. To use for cultivating, remove

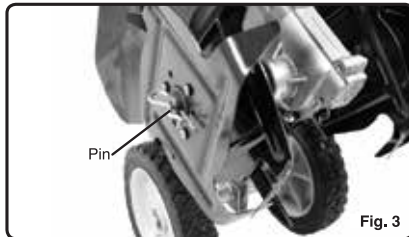
detent pin, and turn the drag stake upside down so the point faces downward. Re-insert the detent pin. Refer to Figure 2.

6. Secure the throttle cable to the handle with FIVE retaining clips already mounted to the handle. Refer to Figure 1.

NOTE: Use the metal retaining clips to secure the throttle cable, while use cable tie only to secure the ignition wire.



HOW TO ASSEMBLE THE TINES



To Remove Tines:

1. Remove the pins from each end of the tine shaft. Refer to Figure 3.
2. Slide the four tines off the tine shaft.

To Install Tines:

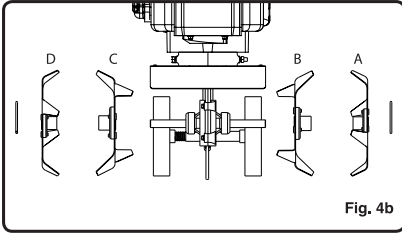
The 4 different tines are labeled "A", "B", "C", and "D". Refer to Figure 4a for the location of the label.

For a 10" (25.4cm) tilling width:

1. Assemble the tines as shown in Figure 4b. Make sure the collars of the tines are facing each other.
2. Insert the pins into the holes at each end of the tine shaft to lock the tines into place. See Figure 3.

For a 7" (17.8cm) tilling width:

1. Only assemble tines B and C (the two inside tines). Do not assemble tines A and D (the two outside tines). Refer to Figure 4b.



2. Insert the pins into the INSIDE holes of the tine shaft to lock the tines into place. See Figure 5.

OPERATION

A) BEFORE STARTING THE ENGINE

Mixing Fuel / 2-Cycle Oil

WARNING

Do not smoke or allow smoking near fuel or the rototiller. Mix and pour fuel outdoors WHERE THERE ARE NO SPARKS OR FLAMES.

The 2-cycle engine on your rototiller requires that fuel and 2-cycle engine oil need to be pre-mixed before adding to the fuel tank.

WARNING

Always mix the gasoline and 2-cycle oil in a container approved for gasoline. Never mix fuel directly in the engine fuel tank.

Use fresh unleaded gasoline with an octane rating of 89 or higher and less than 10% ethanol.

Use 2-cycle oil that meets or exceeds JASO – FC specifications and is intended for mixing at a fuel to oil ratio of 50:1. We recommend the continuous use of a 2-cycle fuel additive/stabilizer to counteract the effects of ethanol. These additives also prolong the shelf life of gasoline.

NOTICE

Use of incorrect gasoline such as diesel fuel or gasoline containing more than 10% ethanol or methanol will damage the rototiller engine and void your warranty.

NOTICE

Use of incorrect oil, such as automotive oil, 2-cycle marine outboard oil, or any oil other than specified oil will damage the rototiller engine and void your warranty.

To mix the fuel and 2-cycle oil, follow instructions on 2-cycle oil container for mixing fuel. Mix gasoline and 2-cycle oil at a ratio of 50:1. A mixture with a 50:1 ratio is obtained by mixing 1 gallon (4 liters) of gasoline with 2.6 ounces of oil (77 ml). After adding oil to gasoline, shake container momentarily to ensure proper mixing.

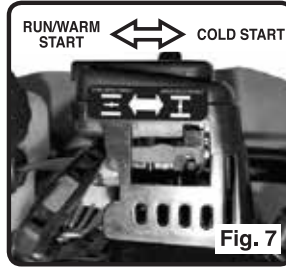
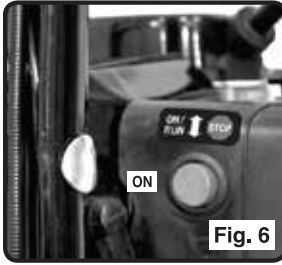
IMPORTANT: Mix only enough fuel for your immediate needs. Do not store pre-mixed fuel.

B) ADDING FUEL TO ROTOTILLER

1. Stop engine and allow it to cool before refueling.
2. Place the unit upright on the ground or on a sturdy bench and wipe away any debris from around the fuel cap.
3. Remove fuel cap slowly and use a funnel to pour the mixture into the tank, and replace the fuel cap.
4. Avoid spilling fuel or oil. Wipe up all fuel spills.
5. Move at least 10 feet (3 meters) away from fueling site before starting engine.

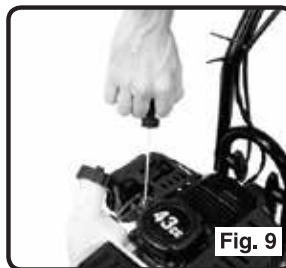
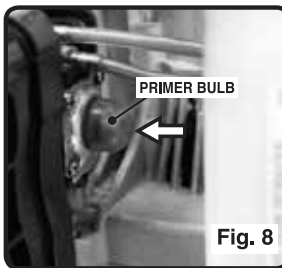
C) STARTING THE ENGINE

Starting a Cold Engine



1. Place the rototiller on a flat surface.
2. Move the ignition switch to the "on" position (See Figure 6).
3. Move the choke lever to the 'cold start' position (See Figure 7).
4. Press the primer bulb slowly 6 times (See Figure 8).
5. Grab the recoil starter handle with your right hand, and support the rototiller with your left hand (See Figure 9).
6. Pull the recoil starter handle sharply until the engine starts and runs
7. After engine starts and runs for 10-15 seconds, move choke lever to "run/ warm start" position (See Figure 7).

Starting a Warm Engine



1. Place the rototiller on a flat surface.
2. Move the ignition switch to the "on" position (See Figure 6).
3. Move the choke lever to the 'run/ warm start' position (See Figure 7).
4. Grab the recoil starter handle with your right hand, and support the rototiller with your left hand (See Figure 9).
5. Pull the recoil starter handle sharply until the engine starts and runs.

Starting a Flooded Engine



Fig. 10

1. Place the rototiller on a flat surface.
2. Move the ignition switch to the ON position.
3. Move the choke lever to the 'run/ warm start' position (see Figure 7).
4. Hold the throttle trigger fully depressed in fast position (See Figure 10).
5. Pull the recoil starter handle repeatedly until engine starts and runs. This could require pulling the recoil starter handle many times, depending on how badly the unit is flooded.
6. If the engine still does not start, allow the unit to sit for about 15 minutes, and repeat steps 1-5.

NOTE: If the unit still doesn't start, refer to the TROUBLESHOOTING section of this manual or: If you need assistance or have any questions, CALL TOLL FREE: 1-833-818-4111.

D) ADJUSTING ENGINE SPEED

NOTE: This rototiller is equipped with a centrifugal clutch, so the tines will not turn until the engine speed is increased. To increase the engine speed, lift up on the throttle trigger (See Figure 10). To slow the engine down, slowly release the throttle trigger. Completely releasing the throttle lever will return the engine to idle and will stop the tines from rotating.

E) STOPPING THE ENGINE

1. Release the throttle trigger and allow the engine to idle for a few moments (See Figure 10).
2. Move the ignition switch to the 'stop' position (See Figure 6).

F) ADJUSTING THE DRAG STAKE POSITION

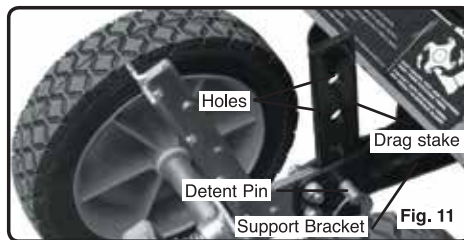


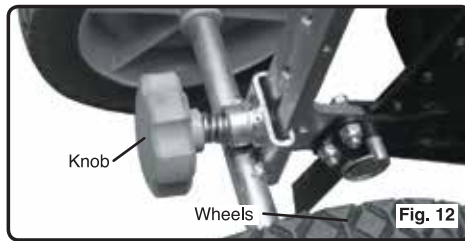
Fig. 11

The drag stake adds resistance when cultivating which makes the unit easier to control. It also can be adjusted to change the depth of cultivating. To adjust the drag stake position, follow the steps below and refer to Figure 11:

1. Remove the detent pin
2. Slide the stake to the desired position, aligning the hole in the stake with the holes in the support bracket
3. Insert the detent pin through the holes to secure the drag stake.

NOTE: For the deepest cultivating depth, set the drag stake in its lowest position. This will give the greatest resistance and allow for the deepest depth.

G) ADJUSTING THE WHEEL HEIGHT



1. Loosen knob.
2. Move the wheels up or down.

NOTE: The upper position is for cultivating, the lower position is for transport.

3. Tighten knob securely after adjusting the wheels to the desired height.

MAINTENANCE

A) AIR FILTER

WARNING


Turn off ignition switch, and disconnect the spark plug before performing maintenance except for carburetor adjustments. Reconnect the spark plug wire after the service is done. Your rototiller has been equipped with two (2) air filters inside the air filter housing to prevent dirt and debris from entering the engine.

Accumulated debris and dust in the air filters will reduce engine performance, increase fuel consumption, and increase the risk of damage to the engine. Inspect the air filters frequently for dust and debris buildup, and clean the air filters every 5 hours of operation (more frequently in dusty/ dirty conditions).

Both air filters should be cleaned by following these instructions:

1. Before removing air filter cover, brush away any loose dirt or debris on and around the filter cover.
2. Remove the screw securing the air filter cover (Fig 13).
3. Remove and clean foam filter (Fig 15).

- Light surface dust can readily be removed by tapping the filter.
- Heavy deposits should be washed out in soap and water. Squeeze out any remaining water and allow the filter to completely dry.

 **WARNING** Never clean filter in gasoline or other flammable solvents.

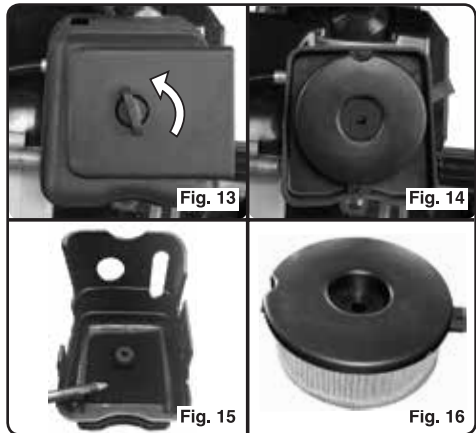
4. Add a drop of thin oil to the filters and replace it.
5. Remove the paper air filter element (Fig 16). Clean filter by gently tapping it on a flat surface. Replace if very dirty.
6. Reassemble the filter element and the air filter cover.

B) SPARK PLUG

Inspect the spark plug after every 10-15 hours of use; adjust spark plug gap and replace spark plug as necessary. Replace spark plug every year to maintain engine performance and easy starting.

To inspect or replace the spark plug:

1. Remove the insulated spark plug boot.
2. Use the spark plug wrench to remove the spark plug, by turning counterclockwise.
3. Visually inspect the spark plug for cracks or damage. If damaged, replace spark plug with a recommended replacement (see "Product Specifications").



4. Clean carbon deposits. If excessive carbon build up, replace spark plug.
5. Adjust the spark plug gap to 0.024 – 0.028 in. (0.6 - 0.7mm).
6. Install the spark plug finger tight in the cylinder head, and then tighten firmly with the spark plug wrench.
7. Reinstall the insulated spark plug boot.

STORAGE

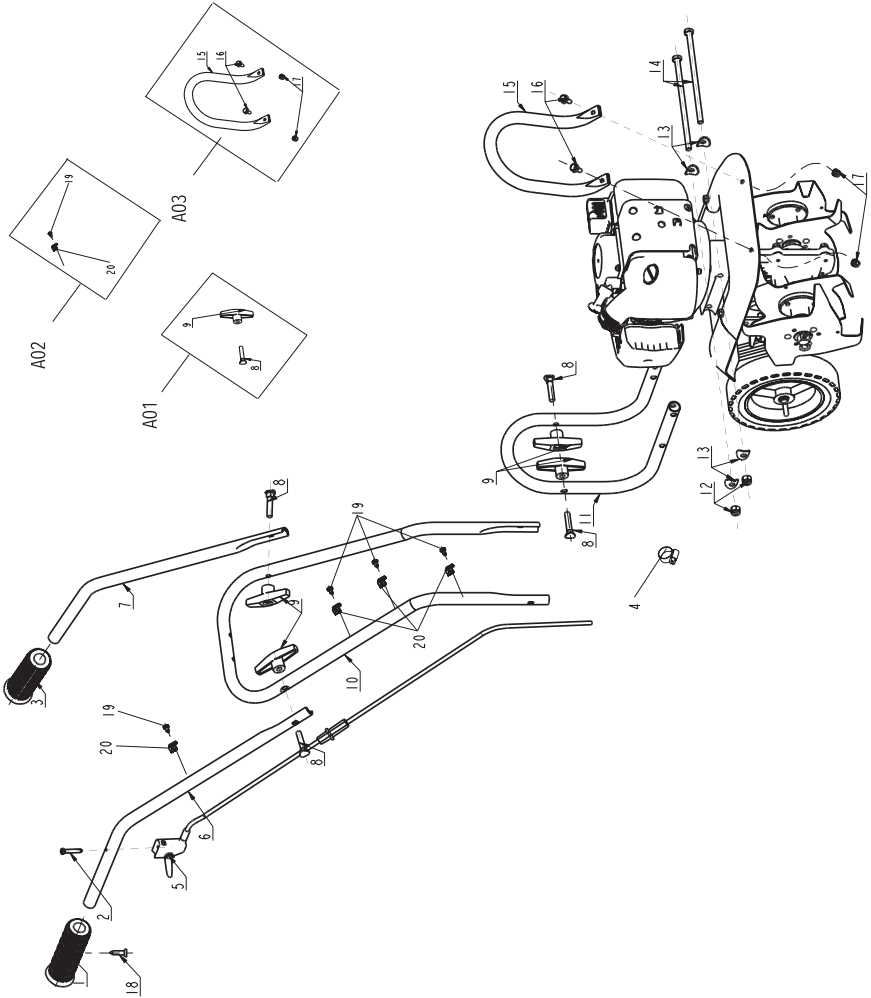
To prevent fuel gum deposits and corrosion in the unit's carburetor and fuel system, it is highly recommended to use a fuel additive/stabilizer formulated for ethanol fuels. Follow the stabilizer manufacturer's instructions. Run the engine at least 5 minutes after adding stabilizer.

1. Allow engine to cool and empty the fuel tank before storing or transporting in vehicle. Use up remaining fuel in the carburetor by starting the engine and letting it run until it stops.
2. When not in use, store rototiller indoors in a dry location. Store rototiller above the reach of children or in a locked area out of the reach of children.
3. Store unit and fuel in area where fuel vapors cannot reach sparks or open flames from water heaters, electric motors or switches, furnaces, etc.
4. When preparing the rototiller for storage or when rototiller will not be used for 30 days or more:
 - A. Empty fuel tank and use up remaining fuel in the carburetor by starting the engine and letting it run until it stops. Squeeze primer bulb several times to purge fuel from carburetor.
 - B. Inspect and clean the rototiller thoroughly.
 - C. Lightly oil all external metal surfaces.
 - D. Remove the spark plug, place a few drops of 2-cycle engine oil into the cylinder. Pull the recoil starter several times to distribute the oil. Replace the spark plug.
 - E. Inspect and clean air filter as required.

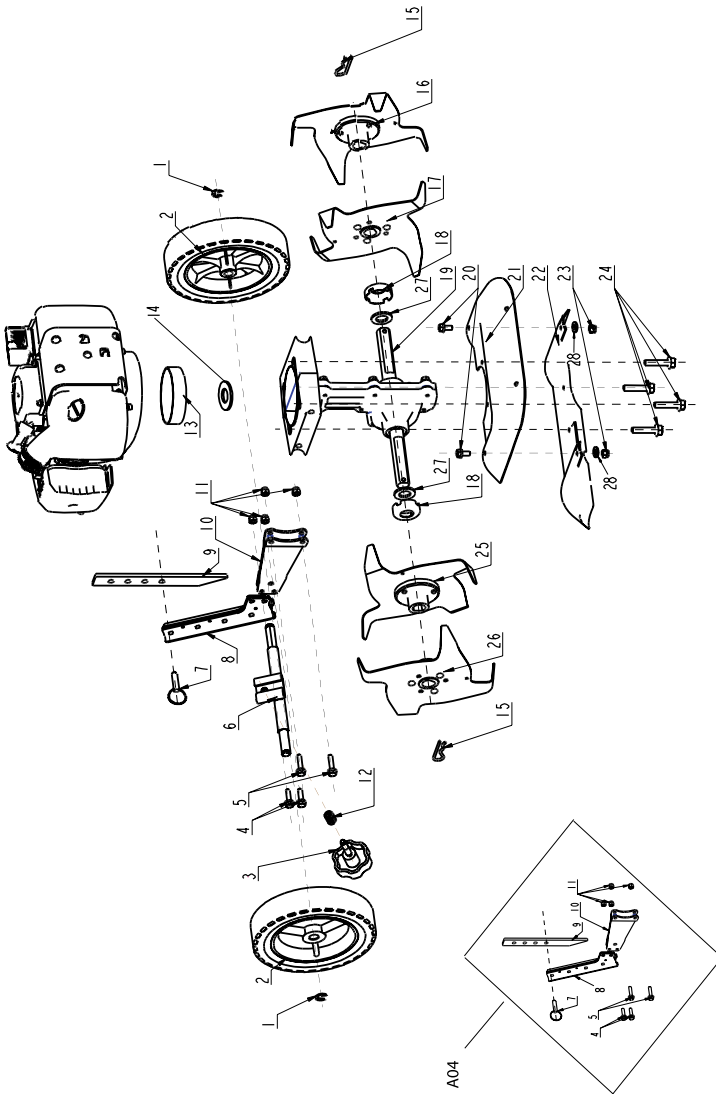
TROUBLESHOOTING

PROBLEM	POSSIBLE CAUSE(S)	SOLUTION(S)
Engine will not start.	1. Ignition switch in the "OFF" position.	1. Move ignition switch to the ON position.
	2. Engine flooded.	2. See Starting a Flooded Engine in OPERATION section.
	3. Fuel tank empty.	3. Fill tank with correct fuel mixture.
	4. Spark plug not firing.	4. Replace spark plug.
	5. Fuel not reaching carburetor.	5. Check for kinked or split fuel line; repair or replace.
	6. Carburetor requires adjustment.	6. Contact a qualified service center.
Engine will not accelerate, lacks power or stalls.	1. Fuel not reaching carburetor.	1. Check for kinked or split fuel line; repair or replace.
	2. Air filter dirty.	2. Clean air filter.
	3. Spark plug fouled.	3. Clean or replace spark plug.
	4. Carburetor requires adjustment.	4. Contact a qualified service center.
	5. Carbon buildup on muffler outlet screen.	5. Contact a qualified service center.
	6. Compression low.	6. Contact a qualified service center.
Engine smokes excessively.	1. Fuel mixture incorrect.	1. Empty fuel tank and refill with correct fuel mixture.
	2. Air filter dirty.	2. Clean or replace air filter.
	3. Carburetor requires adjustment.	3. Contact a qualified service center.
	4. Choke lever in the CHOKE/COLD START position.	4. Rotate choke lever to the RUN/WARM START position.
Engine runs hot.	1. Fuel mixture incorrect.	1. See Mixing Fuel/2-Cycle Oil in OPERATION section.
	2. Spark plug incorrect.	2. Replace with correct spark plug.
	3. Carburetor requires adjustment.	3. Contact a qualified service center.
	4. Carbon buildup on muffler outlet screen.	4. Contact a qualified service center.
Engine will not idle properly.	1. Carburetor requires adjustment.	1. Contact a qualified service center.
	2. Crankshaft seals worn.	2. Contact a qualified service center.
	3. Compression low.	3. Contact a qualified service center.

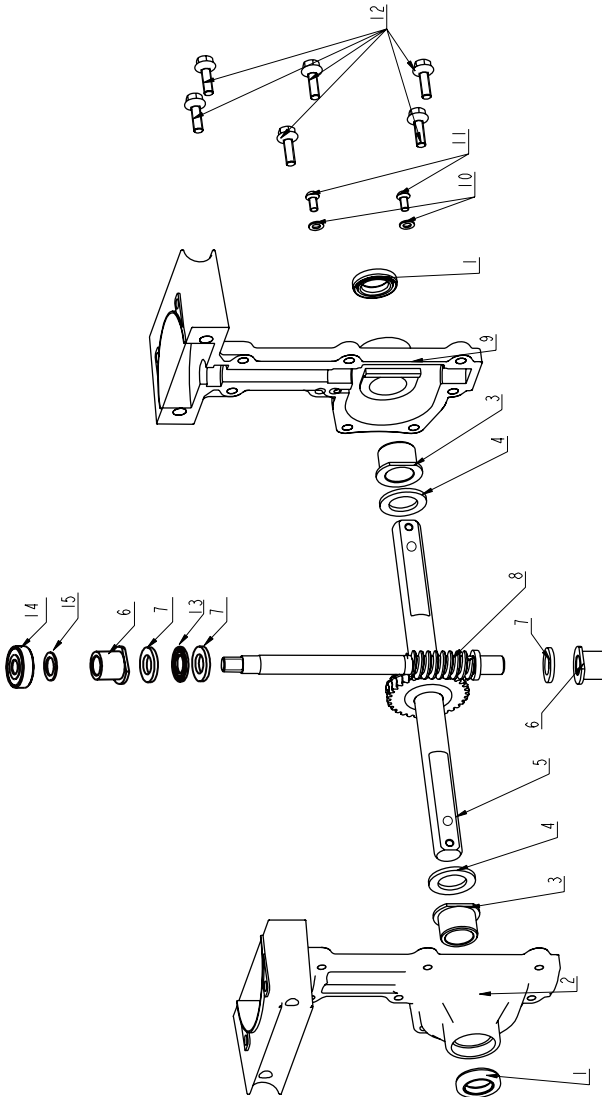
EXPLODED VIEW - HANDLE ASSEMBLY



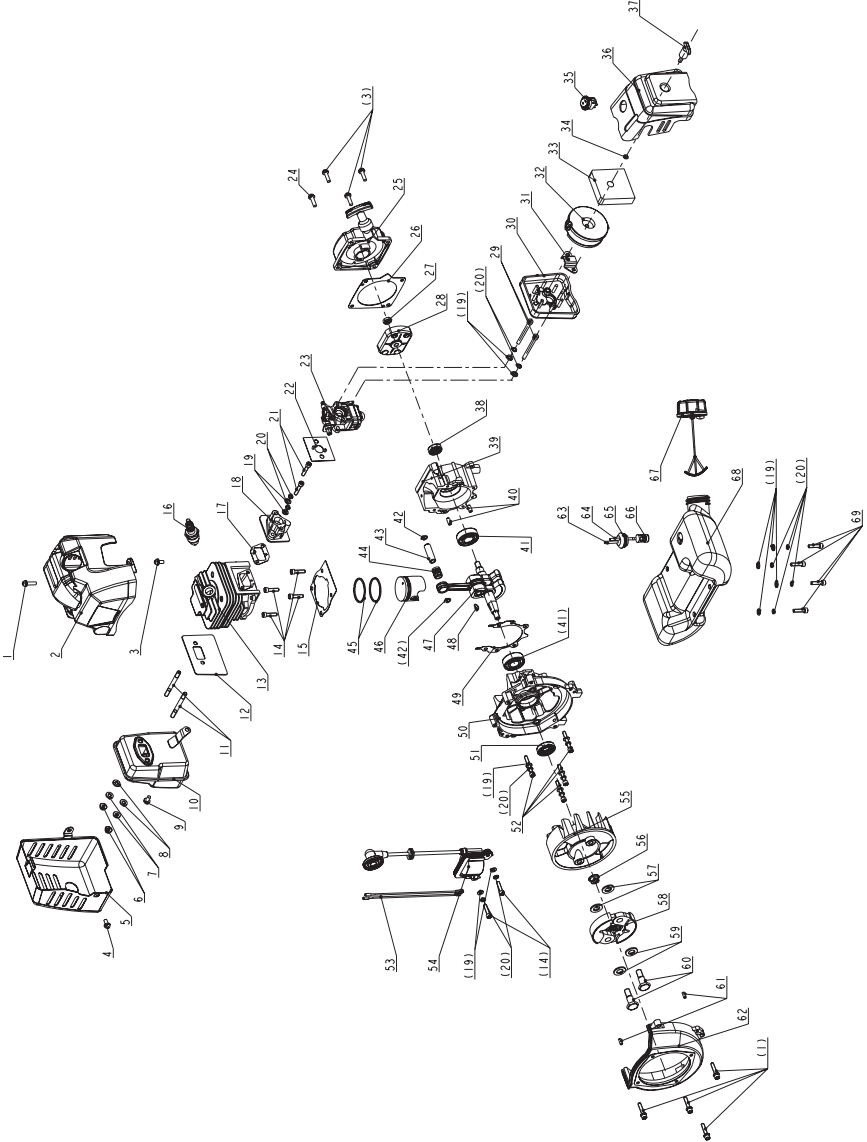
EXPLODED VIEW - HOUSING ASSEMBLY



EXPLODED VIEW - TRANSMISSION ASSEMBLY



EXPLODED VIEW - ENGINE ASSEMBLY



PARTS LIST - HANDLE ASSEMBLY

No.	PART CODE	DESCRIPTION	Qty
01	AVCO011001	Handle grip	01
02	AVCO011002	Tapping screw	01
03	AVCO011003	Handle grip	01
04	AVCO011004	Adjustable hoop assembly	01
05	AVCO011005	Throttle assembly	01
06	AVCO011006	Right-upper handle	01
07	AVCO011007	Left-upper handle	01
08	AVCO011008	Tubular bolt	04
09	AVCO011009	T-shaped knob	04
A01	AVCO011133	Knob assembly	04
10	AVCO011010	Middle handle	01
11	AVCO011011	Lower handle	01
12	AVCO011012	Nut M8	06
13	AVCO011013	Tubular washer	04
14	AVCO011014	Hexagon bolt M8x165	02
15	AVCO011015	Front handle	01
16	AVCO011016	Hexagon flange bolt M6x12	02
17	AVCO011017	Nylon self-locking nut M6	02
A02	AVCO011134	Front handle assembly	01
18	AVCO011018	Tapping screw	01
19	AVCO011019	Tapping screw	05
20	AVCO011020	Clip	05
A03	AVCO011135	Clip assembly	05

EXPLODED VIEW - HOUSING ASSEMBLY

No.	PART CODE	DESCRIPTION	Qty
01	AVCO011021	E-Ring 9	02
02	AVCO011022	Wheel assembly	02
03	AVCO011023	Knob assembly	01
04	AVCO011024	Hexagon flange bolt M6x20	02
05	AVCO011025	Hexagon flange bolt M6x25	02
06	AVCO011026	Axle weld assembly	01
07	AVCO011027	Safe pins	01
08	AVCO011028	Stake, wheel assembly	01
09	AVCO011029	Stake, depth	01
10	AVCO011030	Bracket weld assembly	01
11	AVCO011031	Nylon self-locking nut M6	04
A04	AVCO011136	Adjustment assembly	01
12	AVCO011032	Spring	01
13	AVCO011033	Clutch shoe assembly	01
14	AVCO011034	Flat washer	01
15	AVCO011035	R-Pins	02
16	AVCO011036	Left-outer tine assembly	01
17	AVCO011037	Left-inside tine assembly	01
18	AVCO011038	Oil seal protection cover	02
19	AVCO011039	Transmission assembly	01
20	AVCO011040	Hexagon flange bolt M8*16	02
21	AVCO011041	Front deck	01
22	AVCO011042	Back deck weld assembly	01
23	AVCO011043	Nut M8	02
24	AVCO011044	Hexagon flange bolt M6x35	04
25	AVCO011045	Right-inside tine assembly	01
26	AVCO011046	Right-outer tine assembly	01
27	AVCO011047	Felt pad	02
28	AVCO011048	Flat washer	02

PARTS LIST - TRANSMISSION ASSEMBLY

No.	PART CODE	DESCRIPTION	Qty
01	AVCO011049	Oil seal	02
02	AVCO011050	Right-case	01
03	AVCO011051	Powder metallurgy bearing	02
04	AVCO011052	Flat washer	02
05	AVCO011053	Worm-gear axle assembly	01
06	AVCO011054	Big copper sleeve	02
07	AVCO011055	Flat washer I	03
08	AVCO011056	Worm-shaft	01
09	AVCO011057	Left-case	01
10	AVCO011058	Flat washer	02
11	AVCO011059	Cross recess head screw M5×8	02
12	AVCO011060	Hexagon flange bolt M6×20	06
13	AVCO011061	Needle bearing assembly	01
14	AVCO011062	Bearing	01
15	AVCO011063	Flat washer	01

EXPLODED VIEW - ENGINE ASSEMBLY

No.	PART CODE	DESCRIPTION	Qty
01	AVCO011064	Bolt assembly, M5x23	05
02	AVCO011065	Engine shield assembly	01
03	AVCO011066	Bolt assembly, M5x16	04
04	AVCO011067	Bolt assembly, M5x12	01
05	AVCO011068	Muffler cover	01
06	AVCO011069	M6 Nut	02
07	AVCO011070	Spring washer, 6	02
08	AVCO011071	Washer, 6	02
09	AVCO011072	Bolt M5x10	01
10	AVCO011073	Muffler assembly	01
11	AVCO011074	Stud Bolt AM6X63	02
12	AVCO011075	Muffler gasket	01
13	AVCO011076	Cylinder	01
14	AVCO011077	Bolt M5x20	06
15	AVCO011078	Cylinder gasket	01
16	AVCO011079	Spark plug L6	01
17	AVCO011080	Cylinder intake gasket	01
18	AVCO011081	Carburetor isolator block	01
19	AVCO011082	Washer, 5	14
20	AVCO011083	Spring Washer, 5	14
21	AVCO011084	Bolt M5x25	02
22	AVCO011085	Carburetor gasket	01
23	AVCO011086	Carburetor assembly	01
24	AVCO011087	Bolt assembly, M5x20	01
25	AVCO011088	Recoil starter handle assembly	01
26	AVCO011089	Recoil starter gasket	01
27	AVCO011090	Nut	01
28	AVCO011091	Starting jaw assembly	01
29	AVCO011092	Bolt M5x55	02
30	AVCO011093	Air filter housing	01
31	AVCO011094	Air filter mounting bracket	01
32	AVCO011095	Air filter and mounting plate	01
33	AVCO011096	Pre-filter foam element	01

No.	PART CODE	DESCRIPTION	Qty
34	AVCO011097	O-ring 3.15x1.8	01
35	AVCO011098	Flameout switch assembly	01
36	AVCO011099	Air filter cover	01
37	AVCO011100	Knob assembly	01
38	AVCO011101	Oil seal 12x22x7	01
39	AVCO011102	Right crankcase	01
40	AVCO011103	Pin B5x12	02
41	AVCO011104	Bearing 6202	02
42	AVCO011105	Piston pin circlip	02
43	AVCO011106	Piston pin	01
44	AVCO011107	Needle bearing K10x13x15	01
45	AVCO011108	Piston ring	02
46	AVCO011109	Piston	01
47	AVCO011110	Crankshaft connecting rod assembly	01
48	AVCO011111	Key 3x5x13	01
49	AVCO011112	Crankcase gasket	01
50	AVCO011113	Left crankcase	01
51	AVCO011114	Oil seal 15x30x7	01
52	AVCO011115	Bolt M5x35	04
53	AVCO011116	Flameout line assembly	01
54	AVCO011117	Ignition coil	01
55	AVCO011118	Rotor assembly	01
56	AVCO011119	Nut M8	01
57	AVCO011120	Washer	02
58	AVCO011121	Clutch rotor assembly	01
59	AVCO011122	Spring washer	02
60	AVCO011123	Shoulder bolt	02
61	AVCO011124	Pin B4x10	02
62	AVCO011125	Magneto cover	01
63	AVCO011126	Fuel line 1	01
64	AVCO011127	Fuel line 2	01
65	AVCO011128	Fuel lines seal	01
66	AVCO011129	Fuel filter	01
67	AVCO011130	Fuel cap	01

No.	PART CODE	DESCRIPTION	Qty
68	AVCO011131	Fuel tank	01
69	AVCO011132	Bolt M5x18	04

WARRANTY

RADLEY 43CC 2-CYCLE FRONT TINE ROTOTILLER WARRANTY

If this Radley tool fails due to a defect in material or workmanship within three years from the date of purchase, it has a three-year repair warranty with the original bill of sale. This warranty does not include expendable parts including but not limited to blades, brushes, belts, light bulbs and/or batteries. This warranty covers defects in material or workmanship only. It does not cover normal wear and tear, failure due to abuse/misuse, or defects caused by careless or accidental mishandling. If this Radley product is used for commercial or rental purposes, this warranty does not apply.

43 cc • 2 Cycle
Front Tine
Rototiller

Owner's Manual

3 Year
limited warranty



Radley

EXCLUSIVE TO HOME HARDWARE

For information on the entire line up of Radley power tools visit homehardware.ca or your local Home Hardware retail store.

MADE IN CHINA / FABRIQUÉ EN CHINE
HOME HARDWARE STORES LIMITED
ST. JACOBS, ONTARIO N0B 2N0
ORDER ONLINE / COMMANDE EN LIGNE
homehardware.ca

© 10 / 2020 Home Hardware Stores Limited



5140-004