

Radley®

15" Push Reel Mower

Owner's Manual

3 Year *limited* warranty



READ ALL INSTRUCTIONS BEFORE FIRST USE.
KEEP THIS MANUAL FOR FUTURE REFERENCE.
KEEP AWAY FROM CHILDREN.

TECHNICAL DATA

15" PUSH REEL MOWER	
Model	15F-3C
Cutting width	38 cm / 15"
Height of Cut	13, 23, 32 and 38 mm / ½, 1, 1¼ and 1½"
Net weight	9 kg / 20 lbs

Need Assistance?

Call us on our toll free customer support line:

1-866-332-2464 (Monday through Friday, 9am – 5pm, Eastern Standard Time)

- Technical questions
- Replacement parts
- Parts missing from package

TABLE OF CONTENTS

Technical Data	1
Table of Contents	2
General Safety Warnings	3-4
Parts Description	5
Assembly	5-8
Operating the Mower	8
Adjustment / Maintenance of the Cutting Blades	8
Troubleshooting	9
Exploded View	10
Parts List	11-12
Warranty	13

⚠ WARNING: For your own safety please read this manual before attempting to operate your new unit. Failure to follow instructions can result in serious personal injury. Spend a few moments to familiarise yourself with your mower before each use.

GENERAL SAFETY WARNINGS

⚠ WARNING: When using cutting tools, basic safety precautions, including the following, should always be followed to reduce the risk of serious personal injury and/or damage to the unit. Read all these instruction before operating this product and retain these instructions for future reference.

TRAINING

1. Before using the lawnmower read the instructions carefully. Familiarise yourself with the controls and pay particular attention in learning how to stop the machine in an emergency.
2. Never allow children or people unfamiliar with these instructions to use the lawn mower.
3. Never mow while people, especially children or pets are nearby.
4. Never use the mower if the operator is taking medicine or substances that could affect or impair their ability to react or concentrate.
5. Keep in mind that the operator or user is responsible for accidents or hazards occurring to other people or their property.

BEFORE YOU START

1. While mowing, always wear substantial footwear and long pants. Do not operate the equipment when barefoot or wearing open toed sandals.
2. Thoroughly inspect the area where the equipment is to be used and remove all objects which can damage or be thrown by the machine. Stones and other objects may be projected from the blade. Avoid mowing foreign objects as they may damage the mower and present a hazard to the operator.
3. Before using, always visually inspect to see that the blades, blade bolts and cutter assembly are not worn or damaged. Replace worn or damaged blades and bolts in sets to preserve balance.

OPERATION AND CAUTION

1. Mow only in daylight or in good artificial light.
2. Avoid operating the equipment in wet grass.

READ ALL INSTRUCTIONS BEFORE USING THIS REEL MOWER

3. Always be sure of your footing on slopes. Mow across slopes rather than up and down. Take particular care on slopes and when changing direction.
4. Walk, never run with the mower.
5. Do not mow excessively steep slopes of more than 20°.
6. Use extreme caution when reversing or pulling the lawn mower towards you.
7. Never operate the lawn mower with defective guards, or without safety devices, for example deflectors in place.
8. Keep your feet and hands well away from the blade in accordance with the instructions.
9. Never put hands or feet near or under any rotating parts. Keep clear of the discharge opening at all times.
10. If the mower strikes a foreign object. Inspect the lawn mower for damage and make repairs before continuing to use the mower.

MAINTENANCE AND STORAGE

1. Keep all nuts, bolts and screws tight to be sure the equipment is in safe working condition.
2. Check the grass catcher and deflector frequently for wear or deterioration.
3. Replace worn or damaged parts for safety. Genuine parts should always be used as parts of inferior quality can damage the equipment and compromise safety.
4. If the blade needs to be removed or adjusted, wear strong gloves to prevent injury to hands and fingers. Take care not to trap your fingers in the blades of the mower while making adjustments.
5. Carefully clean the mower and grass bag after use to remove debris as this can damage and corrode.
6. Do not use harsh abrasive or caustic cleaners when cleaning the mower.
7. Store the mower in a dry secure location.

FERTILISERS AND TOP DRESSINGS ARE PARTICULARLY CORROSIVE.

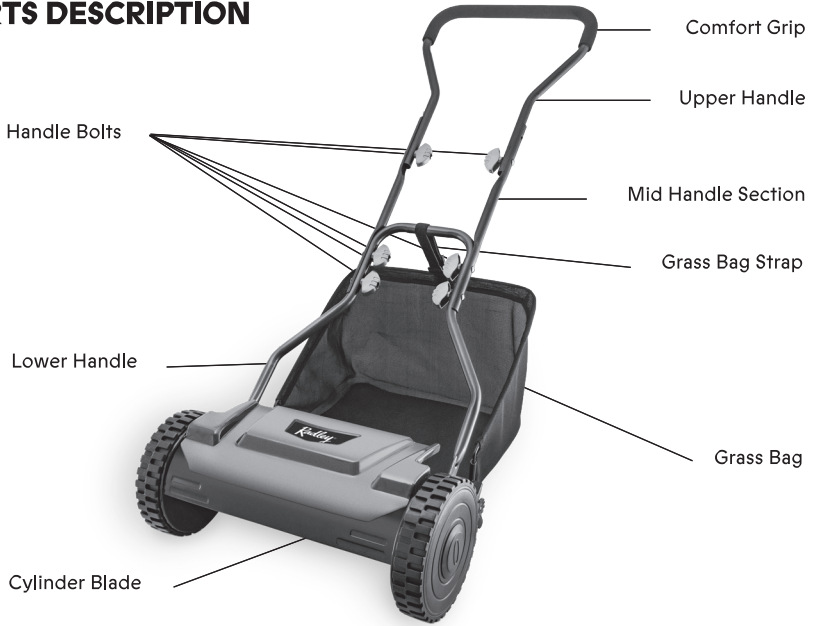
In time your chassis may peel because of the abrasive action of the debris making contact. This can be remedied by touching up paintwork where necessary to prevent corrosion.



WARNING: Do not touch the blades.

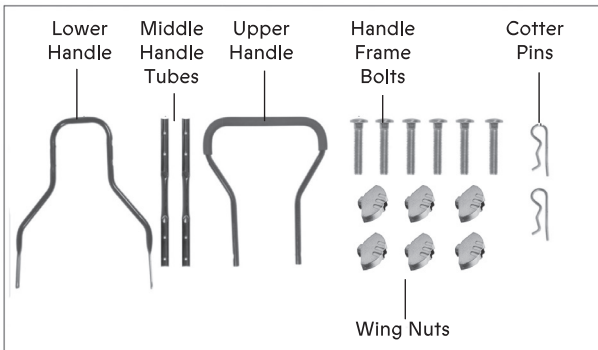
SAVE THESE INSTRUCTIONS FOR REFERENCE

PARTS DESCRIPTION

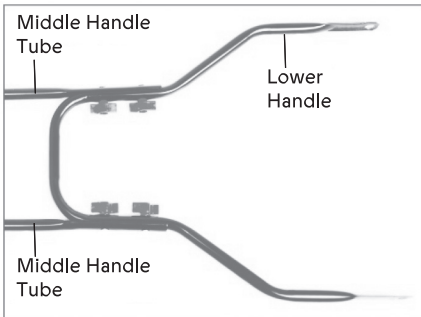


ASSEMBLY

The handle assembly is constructed in four parts. An upper handle frame, two middle handle tubes and a lower handle frame.

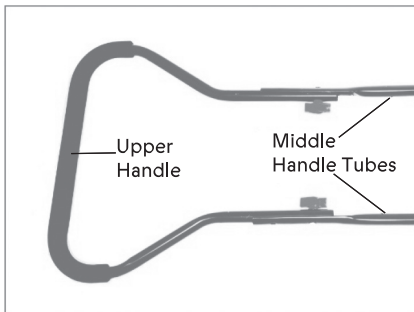


READ ALL INSTRUCTIONS BEFORE USING THIS REEL MOWER



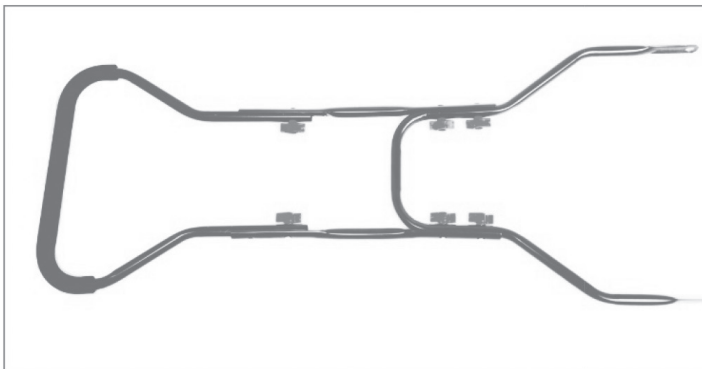
Lower Handle Assembly

The assembly requires the two middle tube sections to be bolted to the lower and upper handle frames. Firstly, place and align the middle tube to the lower handle on one side, as shown in the opposite picture. With the bolts and wing nuts locate a secure the tubes. Repeat the process for the other side. Ensure the bolts are tight and the bracket is held securely.



Upper Handle Assembly

Take the upper handle frame and align with the middle tubes previously fitted. With the bolts and wing nuts shown opposite. Tighten the wing nuts to ensure the upper handle is secure and rigid.

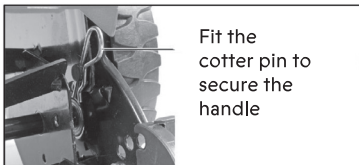
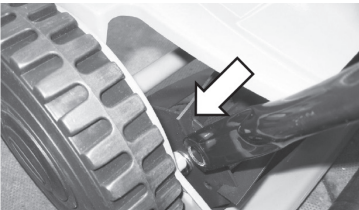
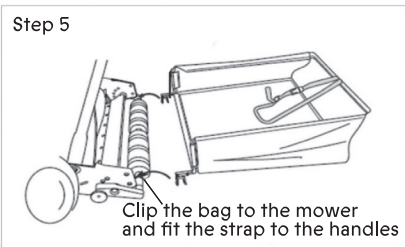
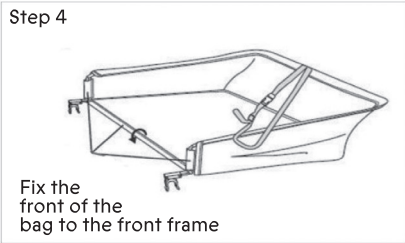
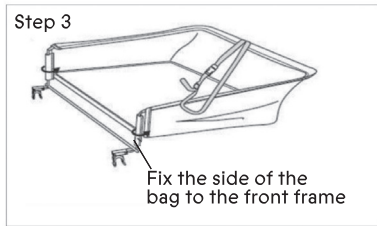
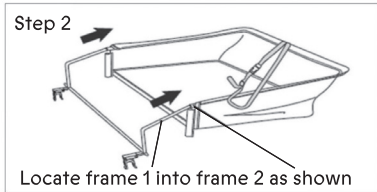
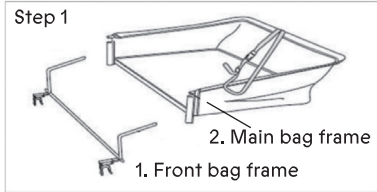


The Completed Handle Assembly

The completed handle assembly should appear as shown above, with each element securely and rigidly located.

SAVE THESE INSTRUCTIONS FOR REFERENCE

Bag Assembly:



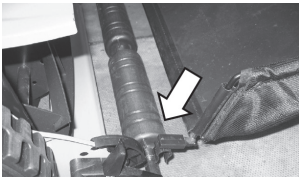
Fitting the Handles to the Mower Body

Align the large holes at the bottom ends of the handle assembly with the lugs of the mower body as illustrated. Carefully squeeze the ends together and release over the lugs of the mower.

Fit the Cotter Pin

Fit the cotter pin to secure the handle frame to the mower, as shown.

READ ALL INSTRUCTIONS BEFORE USING THIS REEL MOWER

**Attaching the Grass Box**

Push the clips of the grass box onto the roller assembly as shown in the picture. Attach the grass box strap through the loop on the box and onto the handle assembly, adjust the length as required.

**Adjusting the Height of Cut**

The hand mower has 4 heights of cut. To change the height; pull out the height of cut adjustment knob indicated in the illustration. Rotate the position of the mower roller to the required height. Repeat for the other side of the mower. Always set each side to the same height.

OPERATING THE MOWER

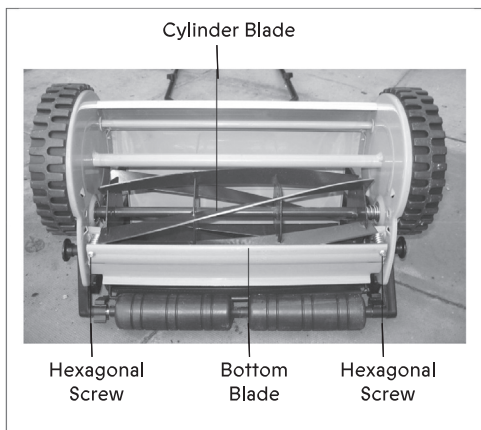
1. Set the height of cut appropriately for the condition of the lawn. Where the grass is long or wet, then ensure the height of cut is high initially. Reset the height of cut to the required height after first mowing the long grass.
2. For the best results only cut dry grass and cut regularly when the grass is growing quickly.
3. Mow in parallel lines with a small overlap.

ADJUSTMENT / MAINTENANCE OF THE CUTTING BLADES

The blade system has a cylinder blade which rotates within the mower housing against the bottom blade. The cutting action is similar to a pair of scissors and when adjusted correctly will provide ideally a clean cut of each blade of grass. Take care to avoid contact with the sharp blades while undertaking the adjustment.

SAVE THESE INSTRUCTIONS FOR REFERENCE

1. The hexagonal screws on the bottom blade assembly allow the distance from the cylinder and the bottom blade to be adjusted.
2. Turn the hexagonal screw clockwise moves the bottom blade closer to the cylinder. Reversely, counterclockwise moves the blade from the cylinder.
3. Adjust the setting so that the blades are just touching. When they are too close mowing will be difficult and noisy. Adjust so that the blades rotate easily, but are still in contact and cutting, rather than ripping the grass.
4. Periodically check the blade adjustment.

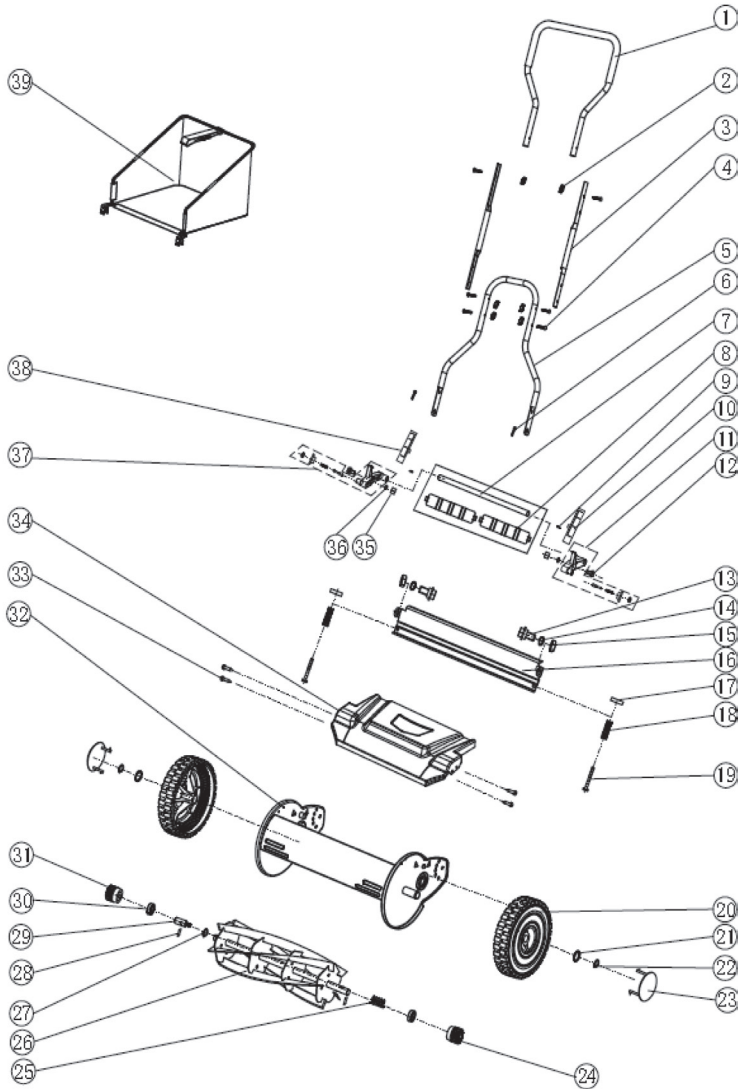


TROUBLESHOOTING

PROBLEM	PROBABLE CAUSE	CORRECTIVE ACTION
The grass is not cut correctly	A ragged cut may be caused by trying to cut too long grass.	Select a higher cut position. Cut more regularly.
	Grass is ripped out rather than cleanly cut.	Adjust the blade and cylinder settings as shown above.
	The cylinder and bottom blade are blunt.	Replace or sharpen the blades.
Excessive vibration and noise	Damaged cylinder or bottom blade.	Replace the damaged blades.
	The bottom blade may be adjusted too closely to the cylinder.	Adjust the blade and cylinder settings as shown above.

READ ALL INSTRUCTIONS BEFORE USING THIS REEL MOWER

EXPLODED VIEW



SAVE THESE INSTRUCTIONS FOR REFERENCE

PARTS LIST

⚠ WARNING: When servicing, use only original equipment replacement parts. The use of any other parts may create a safety hazard or cause damage to the 15" Push Reel Mower. Any attempt to repair or replace parts on this 15" Push Reel Mower may create a safety hazard unless repairs are performed by a qualified technician. For more information, call the Toll-free Helpline, at 1-866-332-2464 – Monday-Friday from 9am - 5pm Eastern Standard Time.

Always order by key number.

Key #	Part Name	Quantity
1	Upper Handle Assy.	1
2	S-shaped Knob	6
3	Middle Handle	2
4	Square Neck Bolt	6
5	Lower Handle	1
6	R-Shaped Pin	2
7	Roller Axle	1
8	Roller	2
9	Tapping Screw	2
10	Left Height Indicator	1
11	Left Roller Support	1
12	High Step Bolt	2
13	Step Bolt	2
14	Elastic Washer	2
15	M8 Nut	4
16	Fixed Blade	1
17	Square Adjusting Nut	2
18	Adjusting Spring	2
19	Adjusting Linkage	2
20	Wheel	2
21	Washer	2
22	Circlip	2
23	Wheel Cap	2
24	Left Pinion	1
25	Spring	1
26	Rotating Blade	1
27	Circlip	1
28	Pin	2
29	Connecting Axle	1
30	Bearing	2

READ ALL INSTRUCTIONS BEFORE USING THIS REEL MOWER

Key #	Part Name	Quantity
31	Right Pinion	1
32	Housing	1
33	Screw	4
34	Cover Plate	1
35	M8 Inset Nut	2
36	Washer	2
37	Right Roller Support	1
38	Right Height Indicator	1
39	Grassbag Assy.	1

SAVE THESE INSTRUCTIONS FOR REFERENCE

WARRANTY

RADLEY 15" PUSH REEL MOWER WARRANTY

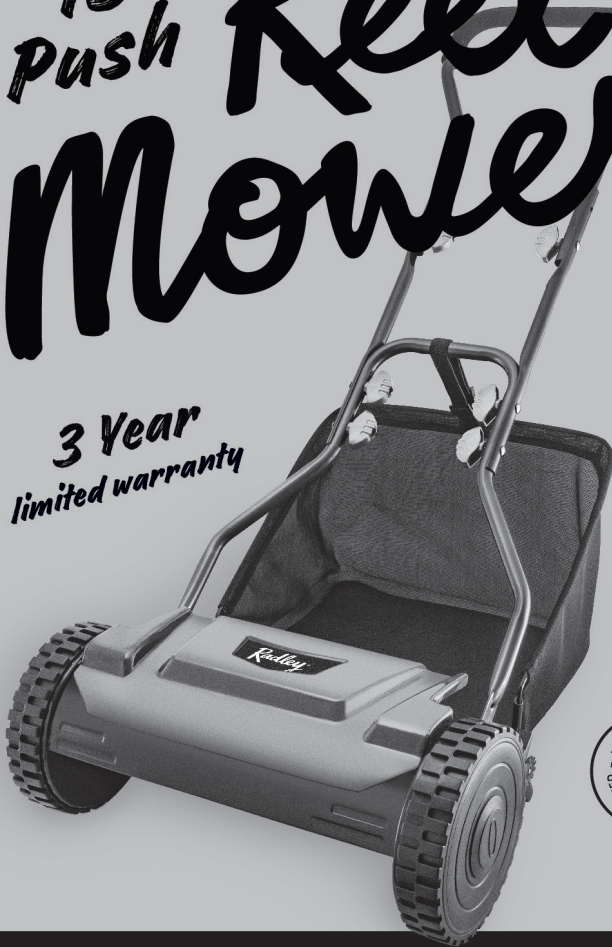
If this Radley tool fails due to a defect in material or workmanship within three years from the date of purchase, return it to any Home Hardware store with the original bill of sale for exchange. This warranty does not include expendable parts including but not limited to blades. This warranty covers defects in material or workmanship only. It does not cover normal wear and tear, failure due to abuse/misuse, or defects caused by careless or accidental mishandling. If this Radley product is used for commercial or rental purposes, this warranty does not apply.

READ ALL INSTRUCTIONS BEFORE USING THIS REEL MOWER

SAVE THESE INSTRUCTIONS FOR REFERENCE

15" Push Reel Mower

3 Year
limited warranty



Radley®

EXCLUSIVE TO HOME HARDWARE

For information on the entire line-up of Radley power tools visit homehardware.ca or your local Home Hardware retail store.

MADE IN CHINA / FABRIQUÉ EN CHINE
HOME HARDWARE STORES LIMITED
ST. JACOBS, ONTARIO N0B 2N0
ORDER ONLINE / COMMANDE EN LIGNE
homehardware.ca

© 10 / 2020 Home Hardware Stores Limited



5122-000