

# HOME ESSENTIALS

## MULTI-USE 4L SPRAYER

Item # 5050-059



1 year limited warranty

**READ ALL INSTRUCTIONS BEFORE FIRST USE.**

**KEEP THIS MANUAL FOR FUTURE REFERENCE.**

**KEEP AWAY FROM CHILDREN.**



**WEAR CSA APPROVED  
EYE PROTECTION**



**WEAR EAR  
PROTECTION**



**WEAR A  
FACE MASK**

MULTI-USE 4L SPRAYER	
Tank capacity	4L
Working pressure	0.25-0.3 Mpa
Flow rate (to fill 2L water)	1.25 L/min (0.25 Mpa)
Sprayer weight	1.76LBS./0.8KG


## NEED ASSISTANCE?

- Technical questions
- Replacement parts
- Parts missing from package

Email us at: [customerservice@powertoolsplus.ca](mailto:customerservice@powertoolsplus.ca)

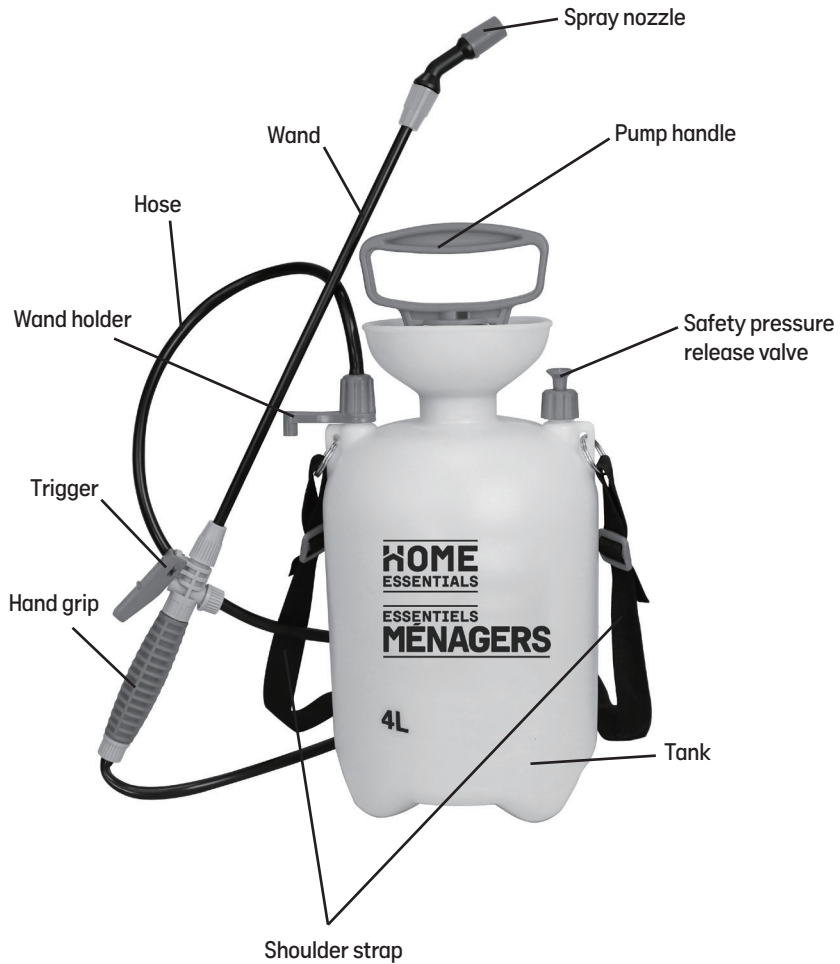
Call us on our toll-free customer support line:

1-866-349-8665 (9-5pm Monday-Friday EST)

 **WARNING:** Improper use or failure to follow warnings or instructions can result in explosive failure causing serious eye or other injury. For safe use of this product you must read and follow all warnings and instructions.

- Always release pressure after each use, before refilling, servicing or storing.
- Do not leave a pressurized sprayer in the hot sun or garage. Heat can cause pressure build-up resulting in possible explosion.
- Avoid spraying in strong winds. Always spray with the wind at the operator's back, so the spray is carried away.
- Do not store or leave solution in tank after use.
- Always wear goggles, gloves, long sleeve shirt, long pants, mask and full foot protection when spraying.
- Never use any tool to remove pump if there is pressure in sprayer.
- Never stand with face or body over top of tank when pumping or loosening pump to prevent ejecting pump assembly and/or solution from striking and injuring you.
- Never pressurize sprayer by any means other than the original pump.
- Do not attempt to modify this sprayer.
- Replace parts only with manufacturer's original parts.
- Never spray flammable, caustic, acidic, chlorine, bleach or other corrosive solutions or heat, pressure, or gas producing chemicals.
- Always read and follow chemical manufacturer's instructions before use with this sprayer as some chemicals may be hazardous when used with this sprayer.
- Wash thoroughly after each use.

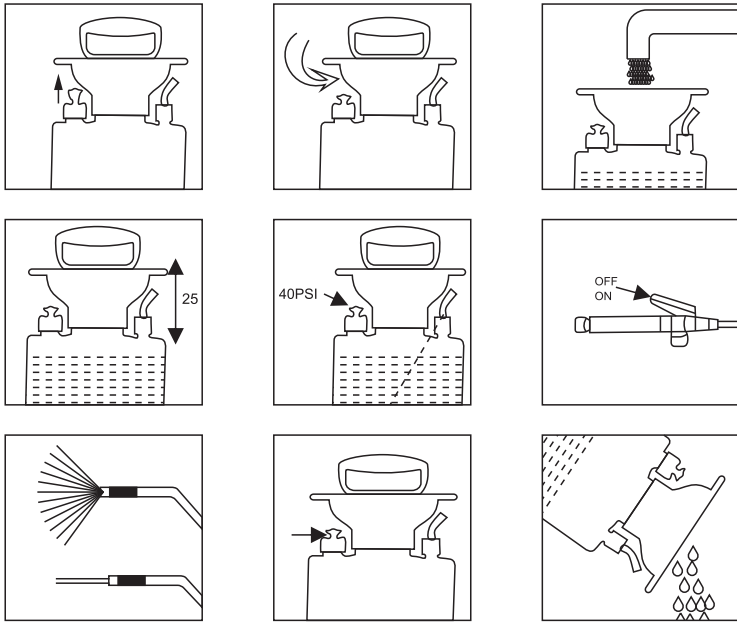
**KNOW YOUR MULTI-USE 4L SPRAYER**



## ASSEMBLY INSTRUCTIONS

**⚠ WARNING:** When servicing, use only original equipment replacement parts. The use of any other parts may create a safety hazard or cause damage to the sprayer.

For more information, call the Toll-free Helpline, at 1-866-349-8665 – Monday-Friday from 9am to 5pm Eastern Standard Time or email us at [customerservice@powertoolsplus.ca](mailto:customerservice@powertoolsplus.ca).




1. Release any pressure that may be left in tank. Pull up the safety pressure release valve and hold it in the lifted position until all excess pressure has been released.
2. While the pump handle is in the down (and locked) position, twist counterclockwise to loosen and remove handle to fill the tank.
3. Do not exceed the maximum fill level – marked on the back of the tank.
4. Do not exceed 25 pumps. Doing so may over-pressurize the tank (max 40 PSI) and result in spray discharge, leaks, or damage to the sprayer.
5. If the sprayer becomes over-pressurized, open the safety pressure release valve to release excess pressure before continuing use or opening the tank.
6. Use On/Off trigger to control spray.
7. Adjust nozzle at end for either fine mist or direct spray.
8. Always release pressure when job is finished.
9. Empty and thoroughly clean pump after each use.

**⚠ WARNING:** Always release pressure after each use, before refilling, servicing or storing.

## TROUBLESHOOTING

### 1. Sprayer not building pressure

Ensure the pump handle is fully screwed in and that the threads are clean and undamaged. **Pressure will not build if the handle isn't sealed properly.**

 **WARNING:** Always release pressure after each use, before refilling, servicing or storing.


### 2. Weak or uneven spray


The nozzle or internal intake filter (located on end of suction tube inside tank) may be clogged. Remove and rinse both parts with clean water.

 **WARNING:** Do not use sharp objects to clear blockages.

### 3. Poor performance after storage

Failure to clean the sprayer after use can cause dried chemical residue, leading to clogged parts and reduced spray function. Empty and flush the sprayer with clean water after each use.

 **WARNING:** Do not store the sprayer with liquid inside.

 **WARNING:** Always depressurize and wear protective gear before cleaning.

## WARRANTY

### HOME ESSENTIALS WARRANTY FOR MULTI-USE 4L SPRAYER

If this Home Essentials tool fails due to a defect in material or workmanship within 1 year from the date of purchase, return it to any Home Hardware store with the original bill of sale for exchange. This warranty does not include expendable parts including but not limited to blades, brushes, belts, light bulbs.

This warranty covers defects in material or workmanship only. It does not cover normal wear and tear, failure due to abuse/misuse, or defects caused by careless or accidental mishandling. If this product is used for commercial or rental purposes, this warranty does not apply.

# MULTI-USE 4L SPRAYER



**HOME ESSENTIALS CANADA**  
ST. JACOBS, ONTARIO N0B 2N0  
©2025 Home Hardware Stores Limited  
CUSTOMER SERVICE/TECH SUPPORT  
1-866-349-8665

**5050-059**

Made in China



\* This Home Essentials product carries a one (1) year LIMITED warranty against defects in workmanship and materials.

**READ ALL INSTRUCTIONS BEFORE FIRST USE.**  
**KEEP THIS MANUAL FOR FUTURE REFERENCE.**  
**KEEP AWAY FROM CHILDREN.**



**WEAR CSA APPROVED  
EYE PROTECTION**



**WEAR EAR  
PROTECTION**



**WEAR A  
FACE MASK**