



CKPS-BK-CN



CKPS-C-CN



CKPS-G-CN



CKPS-BR-CN



CKPS-W-CN



CKPM-BK-CN



CKPM-C-CN



CKPM-G-CN



CKPM-BR-CN



CKPM-W-CN



Cat. No.	Depth (in.)	Gang	Horizontal	Vertical	Colour
NONMETALLIC COVERS					
CKPS-BK-CN	2-1/4	Single	x	x	Black cover and base
CKPS-BR-CN					Bronze cover and base
CKPS-C-CN					Clear cover with grey base
CKPS-G-CN					Grey cover and base
CKPS-W-CN					White cover and base
CKPM-BK-CN	2-7/8				Black cover and base
CKPM-BR-CN					Bronze cover and base
CKPM-C-CN					Clear cover with grey base
CKPM-G-CN					Grey cover and base
CKPM-W-CN					White cover and base
CKPL-C-CN	4-3/4				Clear cover with grey base

One cover handles GFCI, single, duplex or switch configurations

Red Dot Code Keeper extra-duty nonmetallic weatherproof while-in-use covers make it easier than ever to comply with Canadian Electrical Code (CEC) requirements for receptacles in wet locations. Weatherproof covers are often subject to bumps and impact through everyday use, but this reinforced design withstands abuse, featuring a stainless steel hinge pin for rugged cover attachment that's great for high-traffic areas.

After having developed and perfected the art of die casting products for the U.S. air force during the Second World War, the L.E. Mason Company of Boston turned to the manufacturing of electrical products in 1958. In the early 1970's, the company dropped all other products to concentrate on the engineering, production and marketing of electrical products.

Looking for a brand name on which to introduce the product to the industry, the name Red Dot® was chosen. It was an obvious choice since the quality control process for L.E. Mason specified that each product coming out of production be inspected and a Red Dot® applied if it conformed to specs.

This dedication to quality continues today in the various plants that manufacture our product offering. The Red Dot® and Iberville® weatherproof products are two industry leading brands that complement each other and offer a solution to any application that may arise.

Weatherproof Products

red dot[®]

Carlton[®]

IBERVILLE[®]

ABB



10104D



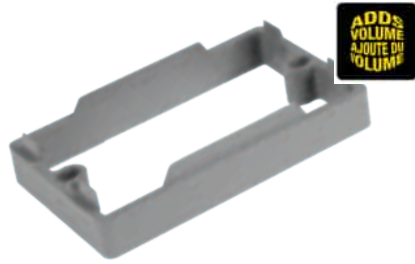
E987NR-V2



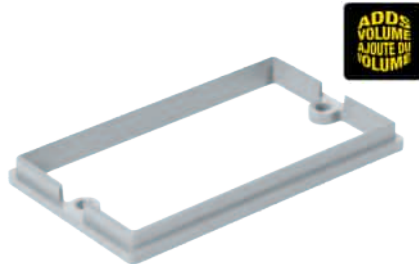
Cat. No.	Dimensions
ENCLOSURES - STEEL	
10104D	10 x 10 x 4 in. deep
664D	6 x 6 x 4 in. deep



Cat. No.	Dimensions
ENCLOSURES - NONMETALLIC	
E987NR-V2	4 x 4 x 4 in. deep
E987RR-V2	6 x 6 x 4 in. deep
E989N-V2-CAR	8 x 8 x 4 in. deep
E989NNJ-V2-CAR	4 x 4 x 2 in. deep
E989RRR-V2-UPC	6 x 6 x 6 in. deep
E989R-V2-UPC	12 x 12 x 6 in. deep



WXT12-RT



WXT18



WXT58



WOCT-VBRT



WSW-VBRT

Cat. No.	Raised	Usage
VAPOUR BARRIERS		
WSW-VBRT	-	Soft shell boot for use with WSW boxes.
WOCT-VBRT		Soft shell boot for use with WOCT and 2-WSW boxes.
EXTENSION RINGS		
WXT12-RT	1/2 in.	-
WXT18	1/8 in.	
WXT58	5/8 in.	



WOCT-CRT



F-WOCT-UPC



WRD-CRT



Cat. No.	Cubic Capacity	Clamps	Dimensions (Height x Width x Depth)	Packaging
CEILING BOXES				
WOCT-CRT	26.0	L	3-3/4 in. x 4 in. x 2-3/4 in.	1 unit
WOCT-VP				4 units
CEILING BOX - AIRTIGHT				
F-WOCT-UPC	26.0	L	3-3/4 in. x 4 in. x 2-3/4 in.	
RANGE AND DRYER BOX				
WRD-CRT	61.0	L	4-7/8 in. x 4-7/8 in. x 3 in.	
RANGE AND DRYER BOX - AIRTIGHT				
FWRD-CRT	61.0	L	4-7/8 in. x 4-7/8 in. x 3 in.	

Usage: L = NMD90 (Loomex, nonmetallic sheathed cable)



WSWN-CRT



WSW-UPC



WSW-BX



2WSW-CRT



3WSW-CRT



F-WSW-UPC



2FWSW-CRT



3FWSW-CRT



Cat. No.	Cubic Capacity	Clamps	Dimensions	Additional Features	Packaging
DEVICE BOXES					
WSWN-CRT	18.0	L	3-3/4 in. x 2-1/4 in. x 2-3/4 in.	External nailing	
WSW-UPC					1 unit
WSW-EP					24 units
WSW-VP					6 units
WSW-FC					
WSWBX		LA		F-WSW box without foam gasket	
2WSW-CRT	33.0	L	3-3/4 in. x 4 in. x 2-3/4 in.	2 Gang	
3WSW-CRT	48.0		3-3/4 in. x 5-3/4 in. x 2-3/4 in.	3 Gang	
4-WSW	67.0		3-3/4 in. x 7-1/2 in. x 2-3/4 in.		
DEVICE BOXES - AIRTIGHT					
F-WSW-UPC	18.0	L	3-3/4 in. x 2-1/4 in. x 2-3/4 in.		1 unit
F-WSW-EP					24 units
FWSWBX		LA			
2FWSW-CRT	33.0	L	3-3/4 in. x 4 in. x 2-3/4 in.	2 Gang	
3FWSW-CRT	48.0		3-3/4 in. x 5-3/4 in. x 2-3/4 in.	3 Gang	
4-FWSW	67.0		3-3/4 in. x 7-1/2 in. x 2-3/4 in.		

Usage: L = NMD90 (Loomex, nonmetallic sheathed cable), LA = AC90 (BX, armored cable)



VB1-CRT



VB2-CRT



VB3-CRT



CIVB-4



VB54-CRT



CI72171-VB



CIDS-55

Cat. No.	Usage
SOFT SHELLS	
VB1-CRT	For use with any 2 in. x 3 in. device box up to 3 in. deep.
VB2-CRT	For use with 4 in. square boxes and 2 in. gang device boxes up to 3 in. deep.
VB3-CRT	For use with 3 gang 2 in. x 3 in. device boxes up to 3 in. deep.
CIVB-4	For use with 4 gang 2 in. x 3 in. device boxes up to 3 in. deep.
VB54-CRT	For use with octagonal boxes up to 2-1/8 in. deep.
HARD SHELL	
CI72171-VB	For use with 4-11/16 in. square boxes up to 2-1/8 in. deep.

Made from tough, resistant material which can be used without cracking at extreme cold temperatures.
 Transparent material makes installation easy and safe.
 Flange is constructed to ensure a good seal on panel surface.



DOOR SWITCH	
CIDS-55	3-11/16 in. H x 1-11/32 in. W x 1-1/2 in. deep 4.5 cu. in. Light's on when door's opened Kit contains: - 3 A, 125 VAC switch with steel push button - Steel box and mounting plate - Mounting screws and wire connectors - Instruction sheet



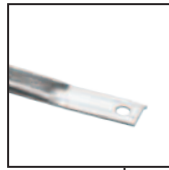
BK-01-CP



1041-RT



1042-RT



1060CP



54151CFB-NW



54151CFB-OW



Cat. No.	Description / Usage
BAR HANGERS	
BK-01-CP	Adjustable hanger for wood stud. Length: 15.5 in. Height: 2.5 in.
1041-RT	Adjustable from 10-1/2 in. to 18 in. width
1042-RT	Adjustable from 14-1/2 in. to 25 in. width
1060CP	16 in. long support bracket. Grooved for use with device boxes with ears.
54151CFB-NW *	New work bar hanger with 4 in. octagonal 1-1/2 in. deep box with NMD90 cable clamps. (wood screws included) Maximum load capacity: Fan 70 lb. and fixtures 200 lb.
54151CFB-OW *	Rework bar hanger with 4 in. octagonal 1-1/2 in. deep box with NMD90 cable clamps. Maximum load capacity: Fan 70 lb. and fixtures 200 lb.

*cULus



66-V2-RP



CI66-FPP



BC66-PPH



66-SS-EP



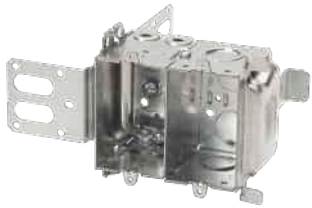
BC66-T



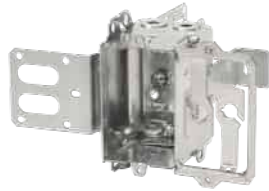
66XL-CP2



Cat. No.	Description / Usage	Packaging
CABLE PROTECTOR PLATES		
66-V2-RP	For wood stud. Nails directly into the stud.	Bag of 5 units
66-EP		Box of 50 units
66M4		Clamshell of 4 units
66P25		Box of 25 units
66RPS-80		Rack pack system of 80 units
CI66-FPP	For wood stud. Nails directly into the top of the stud. Ideal when studs are doubled up as in door frames.	
BC66-PPH	For wood stud. Nails directly into the stud.	
66-SS-EP	For steel stud. Crimps to steel stud with aid of pliers.	Box of 25 units
BC66-T	Protective cylindrical.	
CI66-XL	Large protector plate.	
66XL-CP2	Extra large cable protector plate for wood stud	Pack of 2 units



CI4204-LSSAX



CI4304-LSSAX



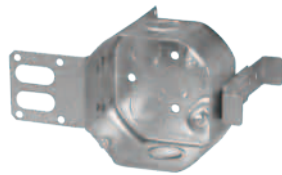
54151LSSAX-RT

METAL STUD MONTANT METAL



54171KSSX-CRT

METAL STUD MONTANT METAL



CI54151-KSSX



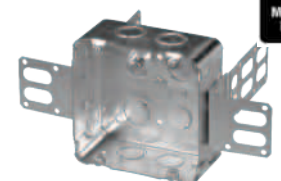
52151KSSX-RT

METAL STUD MONTANT METAL



52171KSSX-RT

METAL STUD MONTANT METAL



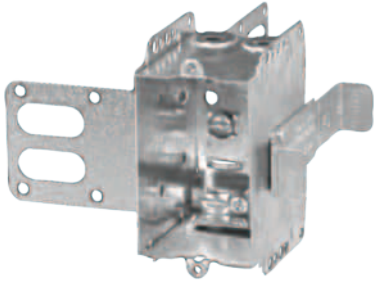
72171KSSX-CRT

METAL STUD MONTANT METAL

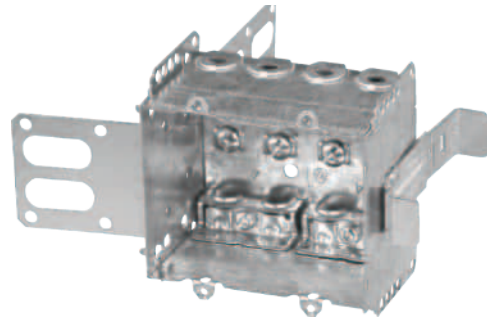


Cat. No.	Features					Conduit Knockouts		
	Cubic Capacity	Usage	Bracket (See page A3)	Ground Screw		Side	Ends	Bottom
				Qty.	Raised			
POWER / COMMUNICATIONS BOXES 3 IN. X 2 IN. (GANGABLE) X 2-1/2 IN.								
CI4204-KSSX	25.0	KO	SSX	2		-	4 x K	4 x 1/2 in.
CI4204-LSSX		L / LA		3	-		2 x K / 4 pryouts	2 x 1/2 in.
CI4204-LSSAX				2	-		4 pryouts	-
CI4304-LSSX				12.5				
CI4304-LSSAX								
4 IN. OCTAGONAL - 1-1/2 IN. DEEP								
CI54151-KSSX	15.0	KO	SSX	1	yes	2 x K	-	2 x K + 2 x 1/2 in.
54151LSSAX-RT		L / LA		2		4 pryouts		1 x 1/2 in.
4 IN. OCTAGONAL - 2-1/8 IN. DEEP								
54171KSSX-CRT	21.0	KO	SSX	1	yes	2 x K	-	2 x K + 2 x 1/2 in.
CI54171-KSSX-1			SSX-1					
4 IN. SQUARE - 1-1/2 IN. DEEP								
52151KSSX-RT	21.0	KO	SSX	1	yes	3 x K + 4 x 1/2	-	2 x K + 2 x 1/2 in.
4 IN. SQUARE - 2-1/8 IN. DEEP								
52171KSSX-RT	30.0	KO	SSX	1	yes	3 x K + 4 x 1/2	-	2 x K + 2 x 1/2 in.
4-11/16 IN. SQUARE - 2-1/8 IN. DEEP								
72171KSSX-CRT	42.0	KO	SSX	1	yes	4 x K	-	2 x K + 2 x 1/2 in.

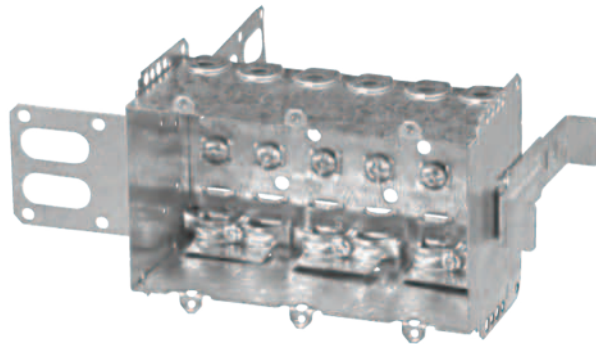
Usage: KO: Conduit KOs only, L = NMD90 (Loomex, nonmetallic sheathed cable), LA = AC90 (BX, armoured cable)



CI2104-LSSX



CI2104-LSSA-2X

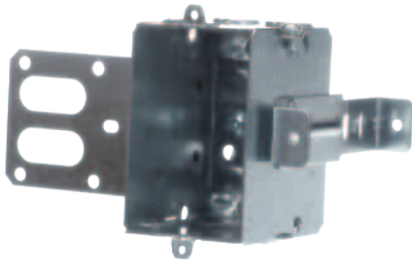


CI2104-LSS3X-1

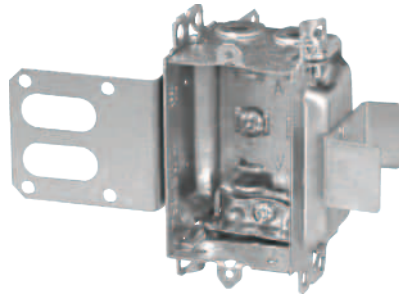


Cat. No.	Features							Conduit Knockouts
	Cubic Capacity	Clamps	Height (in.)	Width (in.)	Depth (in.)	Bracket (See page A3)	Ground Screw (Qty.)	Ends
NON-GANGABLE								
CI2104-LSS1X-1	12.5	L / LA	3	2	2-1/2	SSX-1	2	4 pryouts
CI2104-LSSAX						SSX		
CI2104-LSSX								
CI1504-LSSAX	15.0			2-1/4				
CI-2104-LSS-2X	25.0			3-3/4		SSX-1	4	8 pryouts
CI2104-LSS2X-1								
CI2104-LSSA-2X								
CI-2104-LSS-3X	37.5			5-1/2		SSX	6	12 pryouts
CI2104-LSS3X-1				SSX-1				

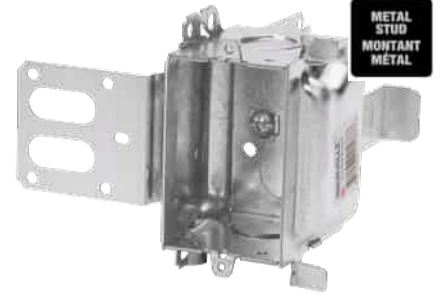
Usage: L = NMD90 (Loomex, nonmetallic sheathed cable), LA = AC90 (BX, armoured cable)



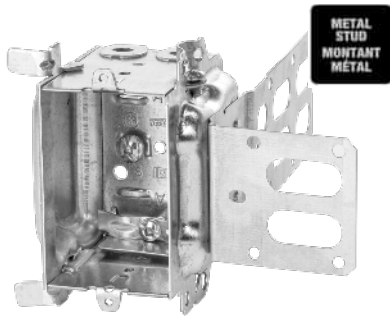
BC1104-LSSX



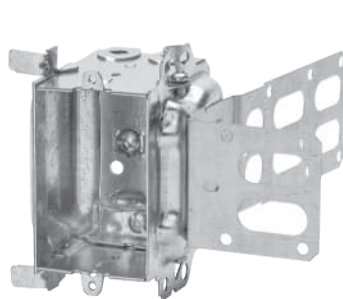
CI3102-LSSAX



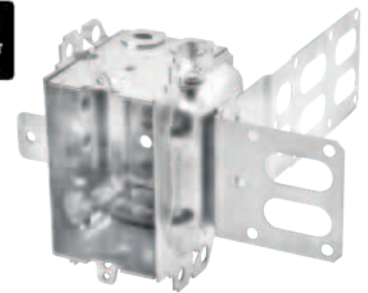
3104KSSX-CRT



3104LSSX-RT



3104LSSAX-RT



CI3104-LSSA1X-1

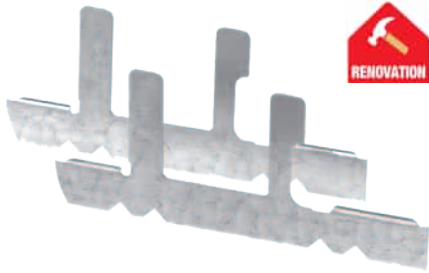


Cat. No.	Features						Conduit Knockouts															
	Cubic Capacity	Clamps	Height (in.)	Width (in.)	Depth (in.)	Bracket (See page A3)	Ground Screw (Qty.)	Ends	Bottom													
GANGABLE																						
BC1104-LSSAX	12.5	L / LA	3	2	2-1/2	SSX	2	4														
BC1104-LSSX																						
CI3102-LSSAX	12.0	L / LA			2					SSX-1	1	2 x 1/2 in.	2 x 1/2 in.									
CI3102-SSX																						
3104KSSX-CRT	16.0	L / LA			2-1/2									SSX	2	4 pryouts						
BC3104KSS1X-1																						
3104LSSAX-RT	18.0	L / LA				3	3	SSX	1									2 x 1/2 in.	2 x 1/2 in.			
3104LSSX-RT																						
CI3104-LSS1X-1	18.0	L / LA								3	3	SSX-1	2							4 pryouts		
CI-3104-LSSA1X-1																						
CI3104-SSX	18.0	L / LA			3									3	SSX	1	2 x 1/2 in.					2 x 1/2 in.
CI3004-LSSAX-1																						
CI3004-LSSX	18.0	L / LA	3	3		SSX-1	2	4 pryouts														
CI3004-LSSX-1																						

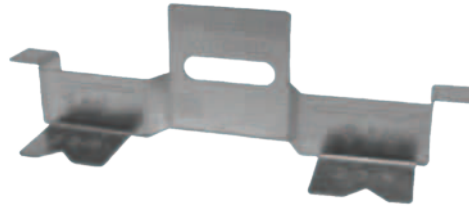
Usage: KO: Conduit KOs only, L = NMD90 (Loomex, nonmetallic sheathed cable), LA = AC90 (BX, armoured cable)



Cat. No.	Cubic Capacity	Depth (in.)	Ground Screws	Conduit Knockouts	Description
4 IN. OCTAGONAL BOX – EXTENSION RINGS					
55151K-CRT	15.0	1-1/2	1	2 x K + 2 x 1/2 in.	Non-adjustable depth of 1-1/2 in.
CI55171-K	21.0	2-1/8	1		Non-adjustable depth of 2-1/8 in.
4 IN. ROUND BOX – EXTENSION RING					
OBEX-CRT	5.0	1/2			Non-adjustable depth of 1/2 in. Complete with mounting screws.
4 IN. SQUARE BOX – EXTENSION RINGS					
53151K-RT	21.0	1-1/2		6 x K + 4 x 1/2 in.	Non-adjustable depth of 1-1/2 in.
53171K-RT	30.0	2-1/8			Non-adjustable depth of 2-1/8 in.
4-11/16 IN. SQUARE BOX – EXTENSION RINGS					
BC73151-K	30.0	1-1/2		6 x K + 4 x 1/2 in.	Non-adjustable depth of 1-1/2 in.
73171K-RT	42.0	2-1/8			Non-adjustable depth of 2-1/8 in.
UTILITY BOX - 4 IN. X 2-3/8 IN. – EXTENSION RING					
1110R-RT	16.5	1-7/8		8 x 1/2 in.	Non-adjustable depth of 1-7/8 in.
UTILITY BOX - 4 IN. X 2-1/8 IN. – EXTENSION RING					
2020R-RT	14.0	1-7/8		8 x 1/2 in.	Can be used on 2018 and 2020 series of boxes, non-adjustable depth or 2-1/8 in.
EXTENSION FOR CONCRETE RINGS					
CI53171-ER	30.0	2-1/8		6 x K + 4 x 1/2 in.	Non-adjustable depth of 2-1/8 in.



820D-RP



CI820-DX



SBEX-V2-RP



Cat. No.	Description	Packaging
REWORK SUPPORT BRACKETS		
820D-RP	Device box support for use in maximum wall thickness of 1 in.	Bag of 2 units
820DB6		Box of 6 units
820-D-CP		Bag of 6 units
820DP30		Box of 30 units
CI820-DX	Device box support for use in maximum wall thickness of 1/2 in. or double 1/2 in.	
CILRW	Bracket for installing 1104 Series of boxes with ears in rework applications c/w 8-32 x 1-1/2 in. long screw.	
DEVICE BOX EXTENDER		
SBEX-V2-RP	2 in. x 3 in. device box extender complete with mounting screws. Maximum adjustable depth of 7/8 in.	Bag of 1 unit



CI425



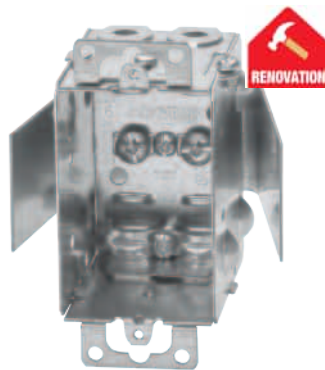
775LD-CRT



777LRB-CRT



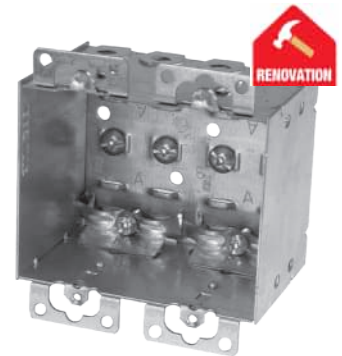
1104LRB-CRT



1104LRW-CRT



2104LRB-CRT



2104LRB2-CRT



Cat. No.	Features						Conduit Knockouts	
	Cubic Capacity	Clamps	Depth (in.)	Bracket (See page A3)	Ground Screw (Qty.)	Maximum Wall Thickness (in.)	Ends	Bottom
DEVICE BOXES 3 IN. X 2 IN.								
CI425	10.0	KO	2	Screwlock	1	5/8	2 x 1/2	
CI425-L		L / LA			2			
775LD-CRT		L			D			
777LRB-CRT	RB		1-1/8					
CI525-L	12.5	L / LA	2-1/2	Screwlock	2	5/8	4 pryouts	
1104LRW-CRT				LRW		1		
1104LRB-CRT								
2104LRB-CRT						4		
2104LRB2-CRT				25.0		3-3/4		
4 IN. OCTAGONAL BOXES								
54151LD-CRT	15.0	L / LA	1-1/2	D	2	3/4	4 pryouts	1 x 1/2 in. and 4 pryouts
BC54171-LD	21.0	L	2-1/8				4	1 x 1/2 in.



LVBRNW-1



LVBRNW-2-RT



LVBRRW-1



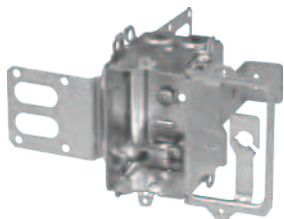
LVBRRW-2



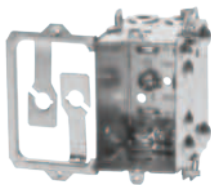
Cat. No.	Description
LOW VOLTAGE PLASTIC BRACKETS	
LVBRNW-1	1 gang low voltage mounting bracket for new work.
LVBRNW-2-RT	2 gang low voltage mounting bracket for new work.
LVBRRW-1	1 gang low voltage mounting bracket for rework.
LVBRRW-2	2 gang low voltage mounting bracket for rework.



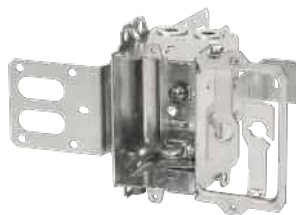
4104L-CRT



CI4304-LSSX



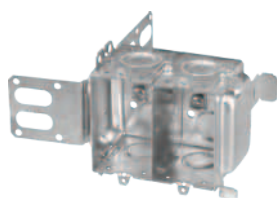
CI4104-LA



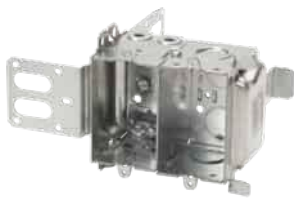
CI4304-LSSAX



CSC300PR



CI4204-KSSX



CI4204-LSSAX



CIMB-0



CIMB-1



CICSB-1



WBF-1-CP



Cat. No.	Features				Conduit Knockouts		Packaging			
	Cubic Capacity	Usage	Bracket (See page A3)	Ground Screw (Qty.)	Ends	Bottom				
2-1/2 IN. DEEP X 3 IN. HIGH X 2 IN. WIDE										
4104L-CRT	12.5	L / LA	SSX	2	4 pryouts					
CI4304-LSSX										
CI4104-LA										
CI4304-LSSAX										
CSC300PR *	3 gang power/communication recessed plate for rework or new work									
2-1/2 IN. DEEP X 3 IN. HIGH X 4 IN. WIDE										
CI4204-KSSX	25.0	K	SSX	2	4 X K	4 X 1/2 in.				
CI4204-LSSX		L / LA					3	2 X K – 4 pryouts	2 X 1/2 in.	
CI4204-LSSAX										
LOW VOLTAGE MOUNTING BRACKETS - CSA NOT APPLICABLE										
CIMB-0	Mounting bracket for low voltage class 2 communication outlets.									
CIMB-1	Mounting bracket for low voltage class 2 communication outlets. Raised 1/2 in.									
CICSB-1	Mounting bracket for low voltage communication outlets.									
WBF-1-CP	Low voltage wall bracket for class 2 communication outlets.						Bag of 2 units			

*Not CSA certified

Note: The power/communications boxes consist of a 2-1/2 in. deep device with a 90 degree folded side incorporating mounting holes for communication outlets and wire holders.

The 4104 series is intended for installation on wood studs, while the 4304 series is intended for installation on 2-1/2 in. or 3-5/8 in. steel studs.

The installation is completed with a standard 2 gang wall plate.

The 4204 series is intended for commercial or industrial installations on 2-1/2 in. or 3-5/8 in. steel studs and consists of a 2-1/2 in. deep box (with or without cable clamps),

pregang with a concentric knockout box for communication and power outlet separated by a steel partition. The installation is completed with a standard 2 gang wall plate.

C.E.C. 2012 edition, rule 12-3030. A partition must be used when conductors, in a multi-gang box, are connected to different sources of voltage.



11C1-CRT



11C3-CRT



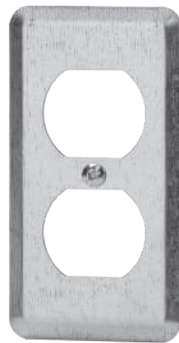
11C4-CRT



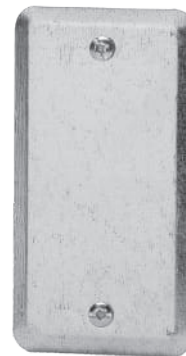
11C5-CRT



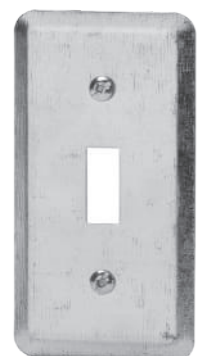
11C10-CRT



20C1-CRT



20C4-CRT



20C5-CRT



Cat. No.	Description
11 SERIES	
11C1-CRT	For one duplex receptacle.
11C2-CRT	For a 20 A single receptacle with a 1-19/32 in. diameter.
11C3-CRT	For a 15 A single receptacle with a 1-13/32 in. diameter.
11C4-CRT	Blank to be mounted directly to the box.
11C5-CRT	For one single toggle switch.
11C10-CRT	For one Decora or GFCI device.
20 SERIES	
20C1-CRT	For one duplex receptacle.
BC20-C-3	For a 15 A single receptacle with a 1-13/32 in. diameter.
20C4-CRT	Blank to be mounted directly to the box.
20C5-CRT	For one single toggle switch.

Device mounting screws included.



CI1141



2020-CRT



2020R-CRT

ADD 2 VOLUME AJOUTE DU VOLUME



1110-CRT



CI1110-SB



1151



1199



1110R-RT

ADD 2 VOLUME AJOUTE DU VOLUME



Cat. No.	Features				Conduit Knockouts			Packaging
	Cubic Capacity	Bracket (See page A3)	Ground Screw Qty.	Raised	Additional Features	Sides	Ends	
1-1/2 IN. DEEP - 4 IN. X 2-1/4 IN.								
CI1141	13.0		1	no	Mounting Lugs	6 x 1/2 in.	2 x 1/2 in.	2 x 1/2 in.
CI2018								
CI2018-SB		SB				Side Bracket	3 x 1/2 in.	
1-7/8 IN. DEEP - 4 IN. X 2-1/8 IN.								
2020-CRT	14.0		1	yes		6 x 1/2 in.	2 x 1/2 in.	2 x 1/2 in.
1-7/8 IN. DEEP - 4 IN. X 2-3/8 IN.								
1110-CRT	16.5		1	yes		6 x 1/2 in.	2 x 1/2 in.	2 x 1/2 in.
1110-VP								
CI1110-SB		SB				Side Bracket	3 x 1/2 in.	
BC1110-LSKO								
2-1/8 IN. DEEP - 4 IN. X 2-1/2 IN.								
1151 * †	18.5		1	yes	For toggle		2 x 1/2 in.	2 x 1/2 in.
1199 * †								
EXTENSION RING - 1-7/8 IN. DEEP - 4 IN. X 2-1/8 IN.								
2020R-RT **	14.0					6 x 1/2 in.	2 x 1/2 in.	
EXTENSION RING - 1-7/8 IN. DEEP - 4 IN. X 2-3/8 IN.								
1110R-RT	16.5					6 x 1/2 in.	2 x 1/2 in.	2 x 1/2 in.

† Devices not included * cULus ** Can be used on 2018 and 2020 series of boxes

4-11/16 in. Square Covers

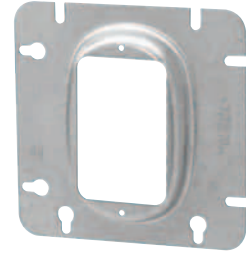
IBERVILLE®



72C1-CRT



BC72-C-6



CI72-C-13



72C17-CRT



CI72-A-52



Cat. No.	Cubic Capacity	Description
72C1-CRT		Flat blank cover.
BC72-C-6		Flat cover with concentric 1/2 in. + 3/4 in. conduit knockout.
CI72-C-10	1.7	1/8 in. raised cover with single device opening.
CI72-C-13	4.3	1/2 in. raised cover with single device opening.
72 C 14	5.0	3/4 in. raised cover with single device opening.
72C17-CRT	6.3	1/2 in. raised cover with two device openings.
ADAPTOR		
CI72-A-52		To install a 4 in. square cover on a 4-11/16 in. square box.



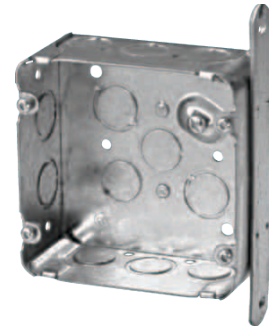
CI72151-K



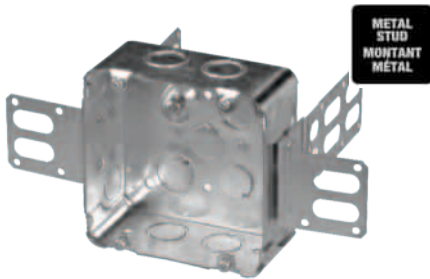
72171-1-CRT



72171K-CRT



CI72171-KSB



72171KSSX-CRT

METAL STUD MONTANT METAL



BC73151-K



73171K-RT

ADDS VOLUME AJOUTE DU VOLUME



Cat. No.	Features				Conduit Knockouts		Packaging
	Cubic Capacity	Bracket (See page A3)	Ground Screw		Sides	Bottom	
			Qty.	Raised			
1-1/2 IN. DEEP							
CI72151-K	30.0		1	yes	6 x K + 4 x 1/2 in.	2 x K + 2 x 1/2 in.	
2-1/8 IN. DEEP							
72171-1-CRT	42.0		1	yes	2 x 3/4 in. + 6 x 1 in.	2 x K + 2 x 1/2 in.	1 unit 4 units
72171K-CRT					6 x K + 4 x 1/2 in.		
72171K-VP					4 x K + 4 x 1/2 in.		
CI72171-KSB		SB			4 x K		
72171KSSX-CRT		SSX					
1-1/2 IN. DEEP - EXTENSION RING							
BC73151-K	30.0				6 x K + 4 x 1/2 in.		
2-1/8 IN. DEEP - EXTENSION RING							
73171K-RT	42.0				6 x K + 4 x 1/2 in.		

4 in. Square Covers Raised 3/8 in.

IBERVILLE®



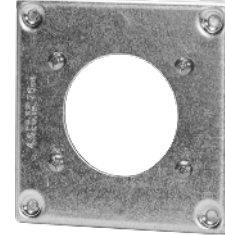
8361-CRT



BC8363



8365-CRT



8366-CRT



8367-CRT



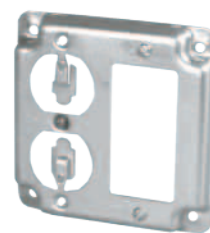
8371-CRT



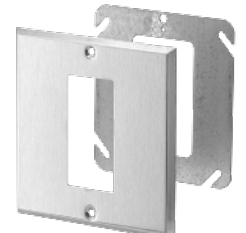
8375-CRT



BC8376



BC8377



97002-CRT

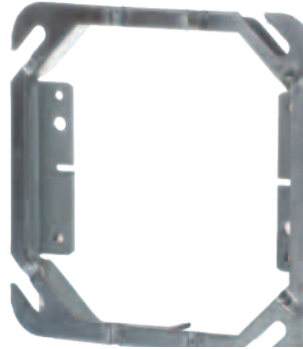


Cat. No.	Description
8361-CRT	For one single toggle switch.
BC8362	For a 30/50 A single receptacle with a 2-5/8 in. diameter.
BC8363	For a 15 A single receptacle with a 1-13/32 in. diameter.
BC8364	For a 20/30 A single locking receptacle with a 1-19/32 in. diameter.
8365-CRT	For one duplex receptacle.
8366-CRT	For a 30 A single receptacle with a 2-9/64 in. diameter.
8367-CRT	For two single toggle switches.
BC8368	For two Decora or GFCI devices.
8371-CRT	For two duplex receptacles.
8375-CRT	For one single toggle switch and one duplex receptacle.
BC8376	For one Decora or GFCI device.
BC8377	For one toggle switch and one Decora or GFCI device.
BC8378	For one duplex receptacle and one Decora or GFCI device.
GFCI CONVERSION KIT	
97002-CRT	To install a GFCI on any 4 in. square box. Complete with steel mounting plate, stainless steel cover and screws.

All covers are supplied with device mounting screws.
All 8300 series covers are raised 3/8 in. and add 4.6 in³ capacity to the box.



52C49-1/2-CRT – CI52-C-51-2



52 C 52 1/2 – 52 C 54 2



52CADJ



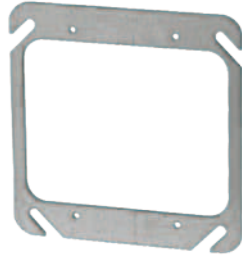
Cat. No.	Cubic Capacity	Description
ONE DEVICE		
52C49-1/2-CRT	3.4	1/2 in. raised cover with single device opening.
BC52-C-49-5/8	4.3	5/8 in. raised cover with two device openings.
52C49-3/4-CRT	5.3	3/4 in. raised cover with single device opening.
52C49-1-CRT	6.8	1 in. raised cover with single device opening.
CI52-C-49-1 1/4	8.6	1-1/4 in. raised cover with single device opening.
CI52-C-50-1 1/2	10.0	1-1/2 in. raised cover with single device opening.
CI52-C-51-2	14.0	2 in. raised cover with single device opening.
52CADJ	3.4 to 10.0	Adjustable from 1/2 in. to 1-1/2 in. raised cover with single device opening.
STEEL CITY BRAND TWO DEVICE COVERS		
52 C 52 1/2	6.0	1/2 in. raised cover with two device openings.
52 C 52 3/4	9.0	3/4 in. raised cover with two device openings.
52 C 52 1	12.5	1 in. raised cover with two device openings.
52 C 52 1 1/4	15.5	1-1/4 in. raised cover with two device openings.
52 C 53 1 1/2	19.0	1-1/2 in. raised cover with two device openings.
52 C 54 2	25.5	2 in. raised cover with two device openings.

4 in. Square Covers

IBERVILLE®



52C0-CRT



52C00-CRT



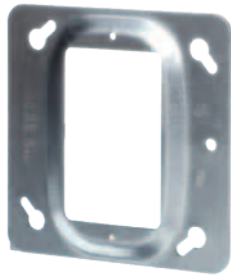
BC52-C-0-B



52C1-CRT



52C6-CRT



CI52-C-62



52C13-CRT



52C14-5/8-CRT



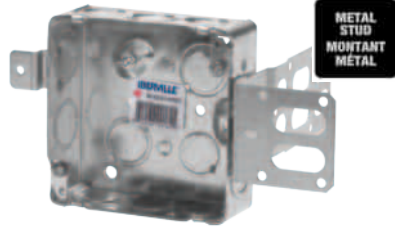
52C17-RT



Cat. No.	Cubic Capacity	Description
52C0-CRT		Flat cover, single device opening.
52C00-CRT		Flat cover, two device openings.
BC52-C-0-B		Flat blank cover.
52C1-CRT		Flat cover with 1/2 in. conduit knockout.
52C6-CRT		Flat cover with 1/2 in. conduit knockout.
CI52-C-10	1.0	1/8 in. raised cover with single device opening.
52C13-RT	3.6	1/2 in. raised cover with single device opening.
CI52-C-14	5.7	3/4 in. raised cover with single device opening.
52C14-5/8-CRT	4.3	5/8 in. raised cover with single device opening.
CI52-C-15	6.8	7/8 in. raised cover with single device opening.
CI52-C-16	9.5	1-1/4 in. raised cover with single device opening.
52C17-RT	6.2	1/2 in. raised cover with two device openings.
CI52-C-62	1.8	1/4 in. raised cover with single device opening.



52151K-CRT



52151KSSX-RT

METAL STUD
MONTANT
MÉTAL



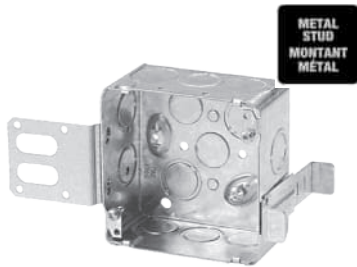
CI52171-1



52171K-CRT

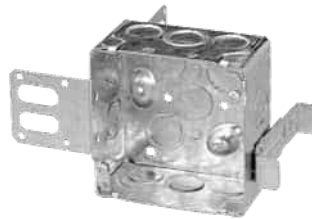


CI52171-KSB



52171KSSX-RT

METAL STUD
MONTANT
MÉTAL

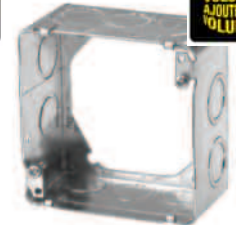


CI52171-KSSX-1



53151K-RT

ADD²
VOLUME
AJOUTE DU
VOLUME



53171K-RT



Cat. No.	Features				Conduit Knockouts	
	Cubic Capacity	Bracket (See page A3)	Ground Screw		Sides	Bottom
			Qty.	Raised		
1-1/2 IN. DEEP						
52151K-CRT	21.0		1	yes	6 x K + 4 x 1/2 in.	2 x K + 2 x 1/2 in.
CI52151-KSB		SB			4 x K + 4 x 1/2 in.	
52151KSSX-RT		SSX			3 x K + 4 x 1/2 in.	
2-1/8 IN. DEEP						
CI52171-1	30.0		1	yes	4 x 1 in.	2 x K + 2 x 1/2 in.
CI52171-1-SSX		SSX			2 x 1 in.	
52171K-CRT					6 x K + 4 x 1/2 in.	
CI52171-KSB		SB			4 x K + 4 x 1/2 in.	
52171KSSX-RT		SSX			3 x K + 4 x 1/2 in.	
EXTENSION RING – 1-1/2 IN. DEEP						
53151K-RT	21.0				6 x K + 4 x 1/2 in.	
EXTENSION RING – 2-1/8 IN. DEEP						
53171K-RT	30.0				6 x K + 4 x 1/2 in.	

4 in. Octagonal Extension Rings and Covers

IBERVILLE®



OBEX-CRT



55151K-CRT



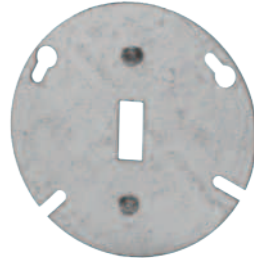
54C1-CRT



54C6-CRT



54C65-CRT



54C94-CRT



CPC4WH



54COV1-CRT



Cat. No.	Cubic Capacity	Ground Screws	Conduit Knockouts	Description
1/2 IN. DEEP - EXTENSION RING				
OBEX-CRT	5.0			Extension ring for octagonal boxes; non-adjustable depth of 1/2. Complete with mounting screws.
1-1/2 IN. DEEP - EXTENSION RING				
55151K-CRT	15.0	1	2 x K + 2 x 1/2 in.	Extension ring for octagonal boxes; non-adjustable depth of 1-1/2.
2-1/8 IN. DEEP - EXTENSION RING				
CI55171-K	21.0	1	2 x K + 2 x 1/2 in.	Extension ring for octagonal boxes; non-adjustable depth of 2-1/8.
4 IN. ROUND COVERS				
54C1-CRT				Flat blank cover.
54C1-EP				Flat blank cover. Carton of 50 units.
54C6-CRT			1 x 1/2 in.	Flat cover.
CI54-C-64				Flat cover for 15 A, 1-13/32 in. diameter single receptacle. Complete with device mounting screws.
54C65-CRT				Flat cover for duplex receptacle. Complete with device mounting screw.
54C94-CRT				Flat cover for toggle switch. Complete with device mounting screws.
CPC4WH *				White finish PVC cover
5 IN. ROUND COVERS				
BC-54-COV			1 x 1/2 in.	Flat cover. Mounting screws included.
54COV-1-CRT				Flat blank cover. Mounting screws included.

*cULus



54171K-RT



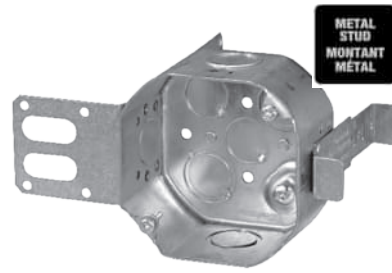
54171L-CRT



54171LB-RT



54171LF-RT



54171KSSX-CRT

METAL
STUD
MOUNTANT
METAL



Cat. No.	Features					Conduit Knockouts		
	Cubic Capacity	Usage	Bracket (See page A3)	Ground Qty.	Screw Raised	Max. Load	Sides	Bottom
54171K-RT	21.0	KO	SSX	1	yes	50 lb.	2 x K + 2 x 1/2 in.	2 x K + 2 x 1/2 in.
54171KSSX-CRT			SSX-1				2 x K	
CI54171-KSSX-1		L / LA	SSX	2	no		2 x 1/2 in.	
54171L-RT						B	1 x 1/2 in.	
BC54171-LSSAX			L	B	2	yes	35 lb.	2 x K + 2 x 1/2 in.
54171LB-RT								
54171LF-CRT								

54171LF-CRT is designed for ceiling fan and supplied with 2 #10-32 machine screws and star washers.

Usage: K = Conduit KOs only, L = NMD90 (Loomex, nonmetallic sheathed cable), LA = AC90 (BX, armoured cable) Conduit knockouts: K = concentric 1/2 in. and 3/4 in.

Note: CEC 2012 rule 30-302: 4) Where the weight of a luminaire does not exceed 23 kg (50 lb.), the luminaire shall be permitted to be supported by a ceiling outlet box attached directly to the building structure or by a ceiling outlet box attached to a bar hanger.

4 in. Octagonal Boxes

IBERVILLE®



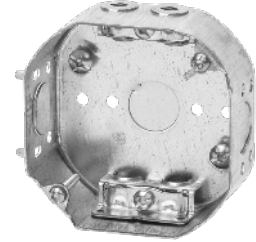
56111-CRT



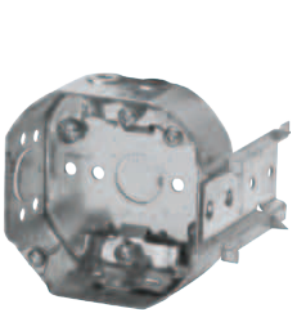
54151K-CRT



54151L-CRT



54151LA-CRT



54151LB-CRT



54151LD-CRT



54151LSSAX-RT



CI54171-KSSX



Cat. No.	Features					Conduit Knockouts		Packaging		
	Cubic Capacity	Usage	Bracket (See page A3)	Ground Screw		Max. Load	Sides		Bottom	
1/2 IN. DEEP										
56111-CRT	5.0	KO		1	yes	50 lb.		4 x 1/2 in.	1 unit	
56111-VP										4 units
1-1/2 IN. DEEP										
54151K-CRT	15.0	KO		1	yes	50 lb.	2 x K + 2 x 1/2 in.	2 x K + 2 x 1/2 in.	1 unit	
54151K-VP										
54151L-CRT		L		2			12 lb.	2 x 1/2 in.	1 x 1/2 in. KO and 8 pryouts	1 unit
54151L-EP30										
54151-L-VP		L / LA				35 lb.	2 x K + 2 x 1/2 in.	2 x K + 2 x 1/2 in. and 8 pryouts		4 units
54151LA-CRT			B							1 unit
54151LB-CRT		L				50 lb.	2 x K + 2 x 1/2 in.	1 x 1/2 in. KO and 8 pryouts	1 unit	
54151LD-CRT			D							
CI54151-LF										
54151LSSAX-RT	L / LA	SSX		no						
CI54151-KSSX	KO	SSX		1	yes		2 x K	2 x K + 2 x 1/2 in.		

Usage: K: Conduit KOs only, L = NMD90 (Loomex, nonmetallic sheathed cable), LA = AC90 (BX, armoured cable) Conduit knockouts: K = concentric 1/2 in. and 3/4 in.
 Note: CEC 2012 rule 30-302: 4) Where the weight of a luminaire does not exceed 23 kg (50 lb.), the luminaire shall be permitted to be supported by a ceiling outlet box attached directly to the building structure or by a ceiling outlet box attached to a bar hanger.