



CI425



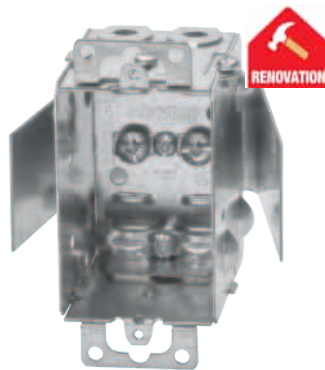
775LD-CRT



777LRB-CRT



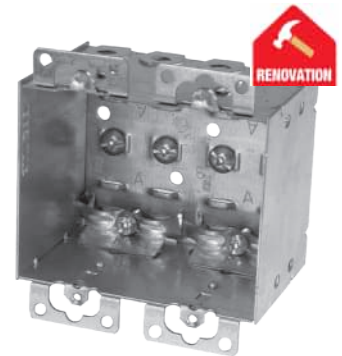
1104LRB-CRT



1104LRW-CRT



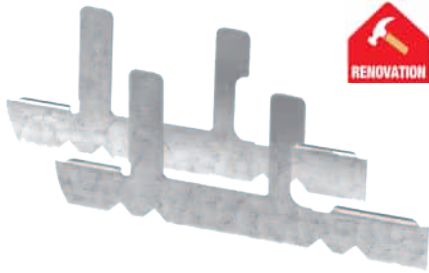
2104LRB-CRT



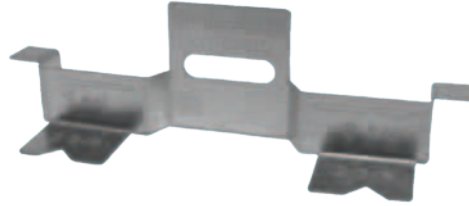
2104LRB2-CRT



Cat. No.	Features						Conduit Knockouts		
	Cubic Capacity	Clamps	Depth (in.)	Bracket (See page A3)	Ground Screw (Qty.)	Maximum Wall Thickness (in.)	Ends	Bottom	
<b>DEVICE BOXES 3 IN. X 2 IN.</b>									
CI425	10.0	KO	2	Screwlock	1	5/8	2 x 1/2		
CI425-L		L / LA			2				
775LD-CRT		L			D				1
777LRB-CRT	RB		1-1/8						
CI525-L	12.5	L / LA	2-1/2	Screwlock	2	5/8	4 pryouts		
1104LRW-CRT						LRW			1
1104LRB-CRT									
2104LRB-CRT									4
2104LRB2-CRT						25.0			3-3/4
<b>4 IN. OCTAGONAL BOXES</b>									
54151LD-CRT	15.0	L / LA	1-1/2	D	2	3/4	4 pryouts	1 x 1/2 in. and 4 pryouts	
BC54171-LD	21.0	L	2-1/8				4	1 x 1/2 in.	



**820D-RP**



**CI820-DX**



**SBEX-V2-RP**



Cat. No.	Description	Packaging
<b>REWORK SUPPORT BRACKETS</b>		
820D-RP	Device box support for use in maximum wall thickness of 1 in.	Bag of 2 units
820DB6		Box of 6 units
820-D-CP		Bag of 6 units
820DP30		Box of 30 units
CI820-DX	Device box support for use in maximum wall thickness of 1/2 in. or double 1/2 in.	
CILRW	Bracket for installing 1104 Series of boxes with ears in rework applications c/w 8-32 x 1-1/2 in. long screw.	
<b>DEVICE BOX EXTENDER</b>		
SBEX-V2-RP	2 in. x 3 in. device box extender complete with mounting screws. Maximum adjustable depth of 7/8 in.	Bag of 1 unit