

Rigid Board Installation Builder's Guide



PART 3 - BELOW GRADE SLAB



For New and Existing Low-Rise Residential and Commercial Construction

Contents

3	Part 1	Introduction
3		Products
4		Applications
5		Product Availability
5		Packaging
5		Material Storage
5		Warranty
6	Part 2	Installation
6		Below Slab
7		Above Slab
8	Part 3	Physical Properties and Testing
10	Part 4	Product Range

Products

SilveRboard® product line is a rigid, flat-sheet insulation material made from Expanded Polystyrene (EPS), covered with a layer of polypropylene reflective lamination on both sides. When installed with an air gap between SilveRboard® and the exterior cladding, the film is able to reflect radiant energy away from the surface keeping heat out during the summer and keeping heat in during the winter.

SilveRboard®

SilveRboard® is the original and most versatile line due to the various numbers of available configurations, ranging in compressive and flexural strengths, densities and thicknesses. Although SilveRboard can fulfill many roles, it is best suited for ceiling applications.

SilveRboard® XS

SilveRboard® XS has been specifically engineered with the laminated surfaces perforated in order to allow the passage of water vapor. The product is identical in performance to the original SilveRboard® with the difference being the water vapor permeance which increased to 3.48 US Perms (217 ng/Pa*s*m²).

SilveRboard® UC (Under Concrete)

SilveRboard® UC has compressive strength of 35 psi making it the ideal solution for below grade applications. The reflective lamination on both sides provides added strength, reducing job site breakage and cracking during construction. It can also serve a vapor barrier when taped sealed.

SilveRboard® Acoustic

SilveRboard® Acoustic is a low density variant designed to provide improved acoustic performance to various assemblies with a rating of STC 19 & IIC 70. It can be used for walls, floors, ceilings in bathrooms, laundry rooms, bedrooms, home theaters and quiet rooms.

SilveRboard® Graphite XS

SilveRboard® Graphite XS is a high performing rigid foam insulation. It uses expanded polystyrene (EPS) base material with embedded carbon “graphite” particles which increase the thermal performance of the insulation. The graphite EPS beads reflect radiant heat energy similar to the effect of a mirror and increase the material's ability to resist the flow of heat. When taped and used as continuous exterior insulation, a separate weather barrier is not required.

Applications

SilveRboard® products are suitable for a variety of applications including residential, agricultural, commercial and industrial sectors.

Applications	SilveRboard®	SilveRboard® XS	SilveRboard® UC	SilveRboard® Acoustic	SilveRboard® Graphite XS
Exterior above grade wall	✓	✓	✓		✓
Interior acoustic partition				✓	
Attic ceiling	✓				
Cathedral ceiling	✓				
Exterior foundation wall	✓		✓		
Interior foundation wall	✓	✓	✓		✓
Above concrete slab			✓		
Below concrete slab			✓		
Frost wall			✓		
Radiant floor heating			✓		
<i>Ideal</i>	✓				
<i>Acceptable</i>	✓				

Product Availability

To meet the unique construction needs of all the parties involved in a construction project we offer a broad and versatile range of products, both conventional and innovative, for every kind of building insulation application. Special orders are available depending on the project scope and needs.

Packaging

- For all board sizes, bundle size is 30" (762mm) in height with corresponding board dimensions for length and width.
- Number of boards per bundle varies with thickness, ranging from 8-60 boards.
- Weight of bundle varies with density of board, ranging from 80-200 lb.
- All SilverBoard® bundles come wrapped in UV protected plastic film.
- Each bundle includes a label with a product code, size of boards, R-value of given board, number of boards and manufacturing date.

The product code is printed on the bundle label. An example; SKU code - **SB12S2004S** can be read as follows (see Product Range for all available products):

- (SB) indicates SilverBoard®
- (12) indicates 12 psi (82.7 kPa) for compressive strength
- (2) indicates thickness of 2" (51mm)
- (4) indicates 4'x8' (1219x2438 mm) board size

Material Storage

SilverBoard® products should be secured during storage and placement. The boards should be covered with a light-colored opaque tarp if stored outdoors for longer than two weeks to reduce excessive moisture intake. EPS should not be exposed to hydrocarbons, e.g. petroleum based solvents such as gasoline, diesel fuel, concrete curing compounds, coal tar pitch and asphalt/mastic compounds.

Warranty

Amvic supports building owners, designers and contractors by offering a 20-year, limited thermal warranty on SilverBoard® product line. This warranty is available to the building owner at the time the building is completed and is transferable to any subsequent owner during the 20-year period.

Below Slab

For this type of application, SilveRboard® UC is recommended.



Application of SilveRboard UC below concrete slab

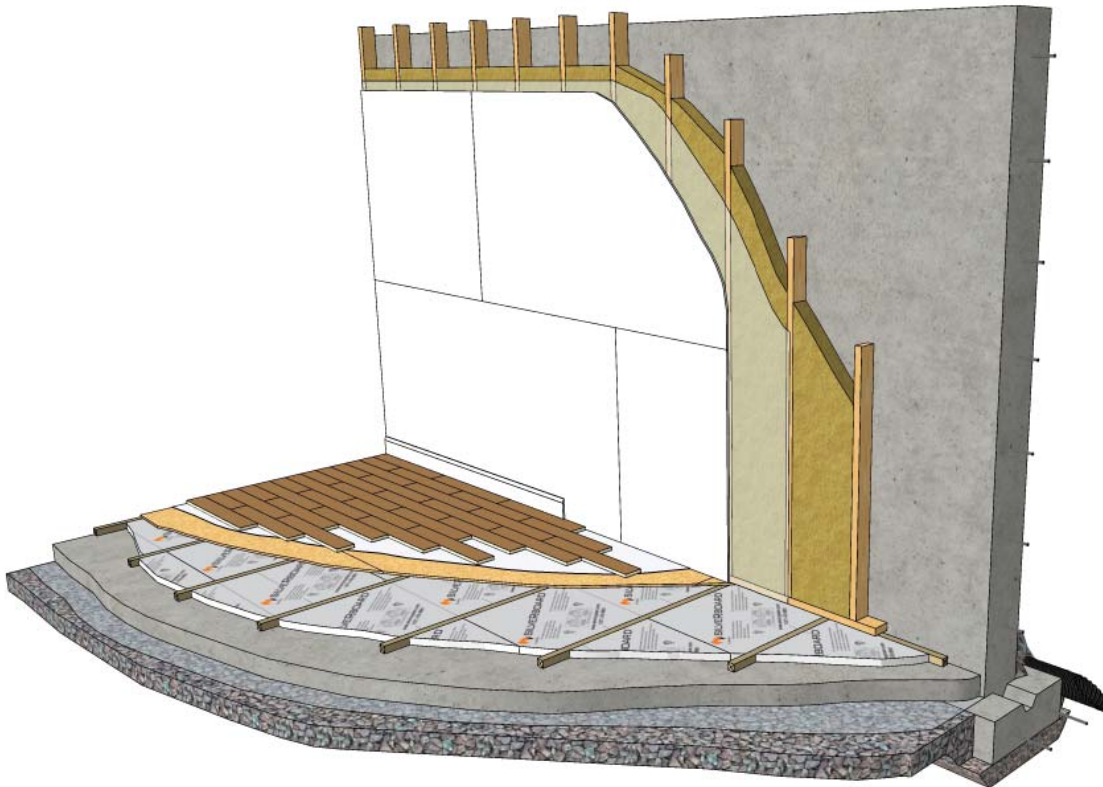
- Make sure soil and granular fill are well compacted prior to installation.
- Place SilveRboard® in a staggered layout, butting edges tightly.
- Tape all seams with approved vapor barrier tape.
- SilveRboard® UC is rated as a vapor retarder and an additional 6 mil polyethylene is not required, unless stated otherwise by the local building code.
- Once the reinforcement (if needed) is placed, place and finish the concrete slab.

Notes:

- *For heavier loading design conditions, higher density rigid boards are available.*

Above Slab

For this type of application, SilveRboard® UC is recommended.



Application of SilveRboard UC above concrete slab

- Remove any protrusions from the surface and clean all debris from the slab to provide clean and even surface.
- *If a 6 mil polyethylene vapor barrier membrane is not present below slab, it can be placed on the concrete and held in place with the strapping.*
- Start with the installation of wood strapping (2-3" wide) along the perimeter of space. Install intermediate strapping every 2' (610mm). Use self-tapping concrete screws or nails.
- Thickness of strapping should be similar to that of the boards to eliminate cutting the strapping to size.
- Install SilveRboard between the strapping tightly butting the edges. Alternate the installation of insulation boards and the strapping for best fit.
- It is recommended to mark the centerline of the strapping on the walls to be used a reference during the subfloor securement to the wood strapping.
- Select appropriate thickness of subfloor sheathing to span the wood strapping with little to no flex.
- Use subfloor adhesive along with screws at 8" (203mm) o.c. to secure the subfloor to strapping. Stagger joints for best results.
- Once the subfloor is secured, install the finished floor.

SilveRboard®

Standard	Description	SB-12	SB-21	SB-35	SB-44	SB-35 XS
ASTM D1622	Density lb/ft ³ (Kg/m ³)	1.0 (16)	1.5 (24)	2.0 (32)	2.5 (40)	2.0 (32)
ASTM C518	R-value/1-inch @ 75°F (ft ² ·°F·h/Btu) RSI/25mm @ 24°C (m ² K/W)	4.1 (0.72)	4.3 (0.76)	5.0 (0.88)	5.0 (0.88)	5.0 (0.88)
ASTM STP1320	R-value/1-inch @ 0°F (ft ² ·°F·h/Btu) RSI/25mm @ -18°C (m ² K/W)	5.2 (0.91)	5.5 (0.96)	6.0 (1.05)	6.0 (1.05)	6.0 (1.05)
ASTM D1621	Compressive strength at 10% strain psi (kPa)	12.8 (88.2)	21.5 (147.9)	35.6 (245.5)	44.4 (306.1)	35.6 (245.5)
ASTM C203	Flexural strength psi (kPa)	40 (277)	60 (414)	84 (579)	106 (730)	84 (579)
ASTM D2842	Water absorption % by volume	0.850	0.680	0.430	0.075	0.043
ASTM E96	Water vapor permeance US perm (ng/ Pa*s*m ²)	0.210 (12.00)	0.150 (8.60)	0.075 (4.27)	0.028 (1.60)	3.480 (217.00)
ASTM D2126	Dimensional stability linear change (%)	-0.147	-0.108	-0.100	-0.100	-0.100
ASTM D2863	Limiting oxygen index (%)	>24	>24	>24	>24	>24
ASTM E2178-11	Standard test method for air permeance of building materials @ 75 pa (L/s*m ²)					0.01

SilveRboard® Graphite XS

Standard	Description	Test Results
ASTM C518	R-value/1-inch @ 75°F (ft ² ·°F·h/Btu) RSI/25mm @ 24°C (m ² K/W)	4.5 (0.78)
ASTM C518	R-value/1-inch @ 0°F (ft ² ·°F·h/Btu) RSI/25mm @ -18°C (m ² K/W)	5.4 (1.00)
ASTM E96	Water vapor permeance US perm (ng/Pa*s*m ²)	0.77 (44)
ASTM E96 (Perforated)	Water vapor permeance US perm (ng/Pa*s*m ²)	2.74 (157)
ASTM D2126	Dimensional stability linear change (%)	Length - 0.18 Width - 0.15
ASTM C203	Flexural strength psi (kPa)	26 (180)
ASTM C272	Water absorption % by volume	0.18
ASTM D2863	Limiting oxygen index (%)	<24
CAN/ULC S102.2	Flame spread 155	Smoke developed 340

SilveRboard® - Non-Perforated

SKU #	Compressive Strength	R-value	Thickness	Dimensions	Packaging
SB21S0500S	21.5 PSI (148 kPa)	R2.1 (0.37 RSI)	1/2" (13mm)	4' x 8' (1.2m x 2.4m)	60 sheets/ bundle
SB21S0750S	21.5 PSI (148 kPa)	R3 (0.53 RSI)	3/4" (19mm)	4' x 8' (1.2m x 2.4m)	40 sheets/ bundle
SB21S1100S	21.5 PSI (148 kPa)	R4.7 (0.83 RSI)	1.1" (28mm)	4' x 8' (1.2m x 2.4m)	27 sheets/ bundle
SB21S1660S	21.5 PSI (148 kPa)	R7.1 (1.25 RSI)	1.66" (42mm)	4' x 8' (1.2m x 2.4m)	18 sheets/ bundle
SB21S2200S	21.5 PSI (148 kPa)	R9.4 (1.66 RSI)	2.2" (56mm)	4' x 8' (1.2m x 2.4m)	13 sheets/ bundle

*Metric values serve as nominal conversions. Tables should be used only as a reference. For the most up to date product availability and pricing contact your local sales representatives.

SilveRboard® - Non-Perforated

SKU #	Compressive Strength	R-value	Thickness	Dimensions	Packaging
SB35S0500S	35.6 PSI (245.5 kPa)	R2.5 (0.44 RSI)	1/2" (13mm)	4' x 8' (1.2m x 2.4m)	60 sheets/ bundle
SB35S0750S	35.6 PSI (245.5 kPa)	R3.75 (0.66 RSI)	3/4" (19mm)	4' x 8' (1.2m x 2.4m)	40 sheets/ bundle
SB35S1000S	35.6 PSI (245.5 kPa)	R5 (0.88 RSI)	1" (25mm)	4' x 8' (1.2m x 2.4m)	30 sheets/ bundle
SB35S1002S	35.6 PSI (245.5 kPa)	R5 (0.88 RSI)	1" (25mm)	2' x 8' (0.6m x 2.4m)	30 sheets/ bundle
SB35S1009S	35.6 PSI (245.5 kPa)	R5 (0.88 RSI)	1" (25mm)	4' x 9' (1.2m x 2.7m)	30 sheets/ bundle
SB35S1500S	35.6 PSI (245.5 kPa)	R7.5 (1.32 RSI)	1.5" (38mm)	4' x 8' (1.2m x 2.4m)	20 sheets/ bundle
SB35S1502S	35.6 PSI (245.5 kPa)	R7.5 (1.32 RSI)	1.5" (38mm)	2' x 8' (0.6m x 2.4m)	20 sheets/ bundle
SB35S2000S	35.6 PSI (245.5 kPa)	R10 (1.76 RSI)	2" (51mm)	4' x 8' (1.2m x 2.4m)	15 sheets/ bundle
SB35S2002S	35.6 PSI (245.5 kPa)	R10 (1.76 RSI)	2" (51mm)	2' x 8' (0.6m x 2.4m)	15 sheets/ bundle
SB35S2009S	35.6 PSI (245.5 kPa)	R10 (1.76 RSI)	2" (51mm)	4' x 9' (1.2m x 2.7m)	15 sheets/ bundle
SB35S3000S	35.6 PSI (245.5 kPa)	R15 (2.64 RSI)	3" (76mm)	4' x 8' (1.2m x 2.4m)	10 sheets/ bundle
SB35S3002S	35.6 PSI (245.5 kPa)	R15 (2.64 RSI)	3" (76mm)	2' x 8' (0.6m x 2.4m)	10 sheets/ bundle
SB35S3500S	35.6 PSI (245.5 kPa)	R17.5 (3.08 RSI)	3.5" (89mm)	2' x 8' (0.6m x 2.4m)	8 sheets/ bundle

*Metric values serve as nominal conversions. Tables should be used only as a reference. For the most up to date product availability and pricing contact your local sales representatives.

SilveRboard® - Non-Perforated

SKU #	Compressive Strength	R-value	Thickness	Dimensions	Packaging
SB44S0500S	44.4 PSI (306 kPa)	R2.5 (0.44 RSI)	1/2" (13mm)	4' x 8' (1.2m x 2.4m)	60 sheets/ bundle
SB44S0750S	44.4 PSI (306 kPa)	R3.75 (0.66 RSI)	3/4" (19mm)	4' x 8' (1.2m x 2.4m)	40 sheets/ bundle
SB44S1000S	44.4 PSI (306 kPa)	R5 (0.88 RSI)	1" (25mm)	4' x 8' (1.2m x 2.4m)	30 sheets/ bundle
SB44S1002S	44.4 PSI (306 kPa)	R5 (0.88 RSI)	1" (25mm)	2' x 8' (0.6m x 2.4m)	30 sheets/ bundle
SB44S2000S	44.4 PSI (306 kPa)	R10 (1.76 RSI)	2" (51mm)	4' x 8' (1.2m x 2.4m)	15 sheets/ bundle
SB44S2002S	44.4 PSI (306 kPa)	R10 (1.76 RSI)	2" (51mm)	2' x 8' (0.6m x 2.4m)	15 sheets/ bundle
SB44S2500S	44.4 PSI (306 kPa)	R12.5 (2.2 RSI)	2.5" (63.5mm)	4' x 8' (1.2m x 2.4m)	12 sheets/ bundle
SB44S3000S	44.4 PSI (306 kPa)	R15 (2.64 RSI)	3" (76mm)	4' x 8' (1.2m x 2.4m)	10 sheets/ bundle
SB44S3002S	44.4 PSI (306 kPa)	R15 (2.64 RSI)	3" (76mm)	2' x 8' (0.6m x 2.4m)	10 sheets/ bundle
SB44S4000S	44.4 PSI (306 kPa)	R20 (3.52 RSI)	4" (101mm)	4' x 8' (1.2m x 2.4m)	7 sheets/ bundle

SKU #	Compressive Strength	R-value	Thickness	Dimensions	Packaging
SB60S1002S	60.0 PSI (413.7 kPa)	R5 (0.88 RSI)	1" (25mm)	2' x 8' (0.6m x 2.4m)	60 sheets/ bundle
SB60S2000S	60.0 PSI (413.7 kPa)	R10 (1.76 RSI)	2" (51mm)	4' x 8' (1.2m x 2.4m)	15 sheets/ bundle
SB60S2002S	60.0 PSI (413.7 kPa)	R10 (1.76 RSI)	2" (51mm)	2' x 8' (0.6m x 2.4m)	30 sheets/ bundle

*Metric values serve as nominal conversions. Tables should be used only as a reference. For the most up to date product availability and pricing contact your local sales representatives.

SilveRboard® - Perforated

SKU #	Compressive Strength	R-value	Thickness	Dimensions	Packaging
SB12XS058P	12.1 PSI (83.4 kPa)	R2 (0.35 RSI)	1/2" (13mm)	4' x 8' (1.2m x 2.4m)	60 sheets/ bundle
SB12XS078P	12.1 PSI (83.4 kPa)	R3 (0.53 RSI)	3/4" (19mm)	4' x 8' (1.2m x 2.4m)	40 sheets/ bundle
SB12XS108P	12.1 PSI (83.4 kPa)	R4 (0.70 RSI)	1" (25mm)	4' x 8' (1.2m x 2.4m)	30 sheets/ bundle
SB12XS158P	12.1 PSI (83.4 kPa)	R5 (0.88 RSI)	1-1/2" (38mm)	4' x 8' (1.2m x 2.4m)	20 sheets/ bundle
SB12XS208P	12.1 PSI (83.4 kPa)	R8 (1.41 RSI)	2" (51mm)	4' x 8' (1.2m x 2.4m)	15 sheets/ bundle
SKU #	Compressive Strength	R-value	Thickness	Dimensions	Packaging
SB35XS0508P	35.6 PSI (245.5 kPa)	R2.5 (0.44 RSI)	1/2" (13mm)	4' x 8' (1.2m x 2.4m)	60 sheets/ bundle
SB35XS0758P	35.6 PSI (245.5 kPa)	R3.75 (0.66 RSI)	3/4" (19mm)	4' x 8' (1.2m x 2.4m)	40 sheets/ bundle
SB35XS0759P	35.6 PSI (245.5 kPa)	R3.75 (0.66 RSI)	3/4" (19mm)	4' x 9' (1.2m x 2.7m)	40 sheets/ bundle
SB35XS108P	35.6 PSI (245.5 kPa)	R5 (0.88 RSI)	1" (25mm)	4' x 8' (1.2m x 2.4m)	30 sheets/ bundle
SB35XS109P	35.6 PSI (245.5 kPa)	R5 (0.88 RSI)	1" (25mm)	4' x 9' (1.2m x 2.7m)	30 sheets/ bundle
SB35XS158P	35.6 PSI (245.5 kPa)	R7.5 (1.32 RSI)	1-1/2" (38mm)	4' x 8' (1.2m x 2.4m)	20 sheets/ bundle
SB35XS159P	35.6 PSI (245.5 kPa)	R7.5 (1.32 RSI)	1-1/2" (38mm)	4' x 9' (1.2m x 2.7m)	20 sheets/ bundle
SB35XS208P	35.6 PSI (245.5 kPa)	R10 (1.76 RSI)	2" (51mm)	4' x 8' (1.2m x 2.4m)	15 sheets/ bundle
SB35XS308P	35.6 PSI (245.5 kPa)	R15 (2.64 RSI)	3" (76mm)	4' x 8' (1.2m x 2.4m)	10 sheets/ bundle

*Metric values serve as nominal conversions. Tables should be used only as a reference. For the most up to date product availability and pricing contact your local sales representatives.

SilveRboard® Graphite

SKU #	Density	R-value	Thickness	Dimensions	Packaging
SBGXS050008P	0.7 lb/ft ³ (11.2 kg/m ³)	R2.2 (0.39 RSI)	1/2" (13mm)	4' x 8' (1.2m x 2.4m)	60 sheets/ bundle
SBGXS050009P	0.7 lb/ft ³ (11.2 kg/m ³)	R2.2 (0.39 RSI)	1/2" (13mm)	4' x 9' (1.2m x 2.7m)	60 sheets/ bundle
SBGXS050010P	0.7 lb/ft ³ (11.2 kg/m ³)	R2.2 (0.39 RSI)	1/2" (13mm)	4' x 10' (1.2m x 3.0m)	60 sheets/ bundle
SBGXS062508P	0.7 lb/ft ³ (11.2 kg/m ³)	R2.8 (0.49 RSI)	5/8" (16mm)	4' x 8' (1.2m x 2.4m)	48 sheets/ bundle
SBGXS062509P	0.7 lb/ft ³ (11.2 kg/m ³)	R2.8 (0.49 RSI)	5/8" (16mm)	4' x 9' (1.2m x 2.7m)	48 sheets/ bundle
SBGXS062510P	0.7 lb/ft ³ (11.2 kg/m ³)	R2.8 (0.49 RSI)	5/8" (16mm)	4' x 10' (1.2m x 3.0m)	48 sheets/ bundle
SBGXS075008P	0.7 lb/ft ³ (11.2 kg/m ³)	R3.3 (0.58 RSI)	3/4" (19mm)	4' x 8' (1.2m x 2.4m)	34 sheets/ bundle
SBGXS100008P	0.7 lb/ft ³ (11.2 kg/m ³)	R4.5 (0.79 RSI)	1" (25mm)	4' x 8' (1.2m x 2.4m)	30 sheets/ bundle
SBGXS100009P	0.7 lb/ft ³ (11.2 kg/m ³)	R4.5 (0.79 RSI)	1" (25mm)	4' x 9' (1.2m x 2.7m)	30 sheets/ bundle
SBGXS100010P	0.7 lb/ft ³ (11.2 kg/m ³)	R4.5 (0.79 RSI)	1" (25mm)	4' x 10' (1.2m x 3.0m)	30 sheets/ bundle
SBGXS112508P	0.7 lb/ft ³ (11.2 kg/m ³)	R5 (0.88 RSI)	1-1/8" (28.5mm)	4' x 8' (1.2m x 2.4m)	27 sheets/ bundle
SBGXS112509P	0.7 lb/ft ³ (11.2 kg/m ³)	R5 (0.88 RSI)	1-1/8" (28.5mm)	4' x 9' (1.2m x 2.7m)	27 sheets/ bundle
SBGXS112510P	0.7 lb/ft ³ (11.2 kg/m ³)	R5 (0.88 RSI)	1-1/8" (28.5mm)	4' x 10' (1.2m x 3.0m)	27 sheets/ bundle
SBGXS150008P	0.7 lb/ft ³ (11.2 kg/m ³)	R6.75 (1.19 RSI)	1-1/2" (38mm)	4' x 8' (1.2m x 2.4m)	20 sheets/ bundle
SBGXS150009P	0.7 lb/ft ³ (11.2 kg/m ³)	R6.75 (1.19 RSI)	1-1/2" (38mm)	4' x 9' (1.2m x 2.7m)	20 sheets/ bundle
SBGXS150010P	0.7 lb/ft ³ (11.2 kg/m ³)	R6.75 (1.19 RSI)	1-1/2" (38mm)	4' x 10' (1.2m x 3.0m)	20 sheets/ bundle

*Metric values serve as nominal conversions. Tables should be used only as a reference. For the most up to date product availability and pricing contact your local sales representatives.

SilveRboard® Graphite

SKU #	Density	R-value	Thickness	Dimensions	Packaging
SBGXS162508P	0.7 lb/ft ³ (11.2 kg/m ³)	R7.5 (1.32 RSI)	1-5/8" (41mm)	4' x 8' (1.2m x 2.4m)	18 sheets/ bundle
SBGXS162509P	0.7 lb/ft ³ (11.2 kg/m ³)	R7.5 (1.32 RSI)	1-5/8" (41mm)	4' x 9' (1.2m x 2.7m)	18 sheets/ bundle
SBGXS162510P	0.7 lb/ft ³ (11.2 kg/m ³)	R7.5 (1.32 RSI)	1-5/8" (41mm)	4' x 10' (1.2m x 3.0m)	18 sheets/ bundle
SBGXS175008P	0.7 lb/ft ³ (11.2 kg/m ³)	R7.8 (1.37 RSI)	1-3/4" (45mm)	4' x 8' (1.2m x 2.4m)	18 sheets/ bundle
SBGXS175009P	0.7 lb/ft ³ (11.2 kg/m ³)	R7.8 (1.37 RSI)	1-3/4" (45mm)	4' x 9' (1.2m x 2.7m)	18 sheets/ bundle
SBGXS175010P	0.7 lb/ft ³ (11.2 kg/m ³)	R7.8 (1.37 RSI)	1-3/4" (45mm)	4' x 10' (1.2m x 3.0m)	18 sheets/ bundle
SBGXS200008P	0.7 lb/ft ³ (11.2 kg/m ³)	R9 (1.58 RSI)	2" (51mm)	4' x 8' (1.2m x 2.4m)	14 sheets/ bundle
SBGXS200009P	0.7 lb/ft ³ (11.2 kg/m ³)	R9 (1.58 RSI)	2" (51mm)	4' x 9' (1.2m x 2.7m)	14 sheets/ bundle
SBGXS200010P	0.7 lb/ft ³ (11.2 kg/m ³)	R9 (1.58 RSI)	2" (51mm)	4' x 10' (1.2m x 3.0m)	14 sheets/ bundle
SBGXS225008P	0.7 lb/ft ³ (11.2 kg/m ³)	R10 (1.76 RSI)	2-1/4" (57mm)	4' x 8' (1.2m x 2.4m)	13 sheets/ bundle
SBGXS225009P	0.7 lb/ft ³ (11.2 kg/m ³)	R10 (1.76 RSI)	2-1/4" (57mm)	4' x 9' (1.2m x 2.7m)	13 sheets/ bundle
SBGXS225010P	0.7 lb/ft ³ (11.2 kg/m ³)	R10 (1.76 RSI)	2-1/4" (57mm)	4' x 10' (1.2m x 3.0m)	13 sheets/ bundle

*Metric values serve as nominal conversions. Tables should be used only as a reference. For the most up to date product availability and pricing contact your local sales representatives.

SilveRboard® is a high quality, innovative insulation materials designed for both residential and commercial applications. Competitive pricing, extensive product distribution and excellent technical support are combined to provide our clients with a simplified approach to a superior finished product. If any of your questions or concerns are not completely addressed in this manual, please contact us and our staff will be happy to answer your questions. At Amvic, we pride ourselves in offering our customers an exceptional level of customer service.

Disclaimer

Information contained in this document is provided as a guideline only, without any warranty of any kind, either expressed or implied, including, but not limited to, the implied warranties of merchantability, fitness for a particular purpose, and freedom of infringement.

This document is provided for informational purposes only. The information contained in this document represents the current views of Amvic Inc. on the issues discussed as of the date of this publication. These opinions, as expressed, should not be interpreted to be a commitment on the part of Amvic Inc. The user assumes the entire risk as to the accuracy and the use of this document.

This manual provides a basic guide for the installation of SilveRboard® and is intended to supplement, rather than replace, the basic construction knowledge of a construction professional. All installations of SilveRboard® must be in accordance with all applicable building codes and/or under the guidance of a licensed professional engineer. In all cases, applicable building code regulations take precedence over this manual.

Technical Support

Please contact us for any inquiries pertaining to information included in this manual, or if you require any other technical assistance.

Phone 1 (877) 470-9991 (toll free)
1 (416) 410-5674

Email support@amvicsystem.com

The Amvic website is updated regularly with the most current news, including testing reports, technical bulletins and evaluation reports. This document is available both in print and as a downloadable file from www.amvicsystem.com

SilveRboard® is a registered trademark of Amvic Inc.