

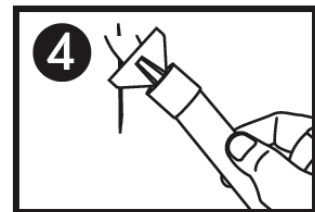
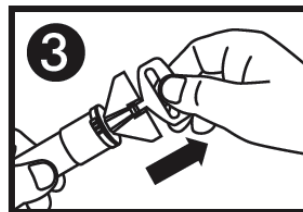
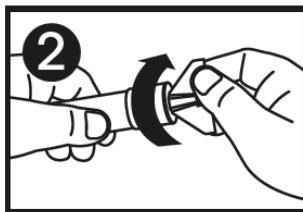
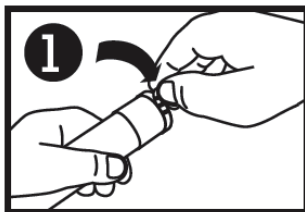


E•Z•PATCH DRYWALL COMPOUND

SUPERIOR FINISH • PATCH AND FILL DRYWALL COMPOUND

- EASY TO APPLY
- EASY TO SAND
- BUILT IN SPREADER AND PLUG
- CLEAN UP WITH SOAP AND WATER
- IDEAL FOR MINOR CRACKS AND HOLES IN PLASTER AND DRYWALL

1627-721.....80mL



Ensure surface is clean and free of dust and grease. 1. Remove strip. 2. Screw in cap to puncture tube. 3. Pull out stopper. 4. Squeeze and apply over damaged area using attached spreader. When finished replace stopper. Apply additional coats as necessary. EZ Patch must be completely dry between coats and before sanding and painting. Minimum temperature of 13°C (55°F) must be maintained during application. Clean up with soap and water. Keep product from freezing. KEEP AWAY FROM CHILDREN.

HOME HARDWARE STORES LIMITED, Paint and Home Products Division, 6 Brian Drive, Burford, Ontario N0E 1A0