

# Radley®

## 7" WET TILE SAW OWNER'S MANUAL



3 Year Limited Warranty on tool



**Intertek**

ETL5012126  
TCUL180A

**READ ALL INSTRUCTIONS BEFORE FIRST USE.  
KEEP THIS MANUAL FOR FUTURE REFERENCE.  
KEEP AWAY FROM CHILDREN.**



**WEAR CSA APPROVED  
EYE PROTECTION**



**WEAR EAR  
PROTECTION**



**WEAR FACE  
PROTECTION**



## ***PRODUCT SPECIFICATIONS***

<b>7" WET TILE SAW</b>	
Rating	120V~ 60 Hz, 5.8 Amp Brushless induction motor
Wheel Diameter	7" (17.8cm)
No Load Speed	3450 RPM
Wheel Arbor	5/8"
Maximum Depth of Cut	1-1/4" (3.2cm) @ 90° & 11/16" (1.7cm) @ 45°
Maximum Cutting Angle	45°
Table Dimensions	15.5" (39.4cm) x 15.1" (38.4cm)
Replacement Blade	1252-006
Blade options (sold separately)	1252-007 Glass/Mosaic Tile & 1252-014 Porcelain/Granite
Cord Length	6 ft
Weight	22.5 lbs. (10.2kg)

### **NEED ASSISTANCE?**

Call us on our toll-free customer support line:  
1-866-349-8665 (Monday through Friday 9am – 5pm  
Eastern Standard Time)

- Technical questions
- Replacement parts
- Parts missing from package

***TABLE OF CONTENTS***

Product Specifications ..... 1  
Table of Contents.....2  
General Safety Warnings.....3-6  
Specific Safety Rules .....6  
Safety Symbols .....7  
Know your tile saw .....9  
Assembly and Operation ..... 10-11  
Maintenance..... 12  
Trouble shooting ..... 12  
Exploded view ..... 13  
Part list .....14-15  
Warranty ..... 16

## GENERAL SAFETY WARNINGS

### ⚠ WARNING:

Before using this tool or any of its accessories, read the manual and follow all Safety Rules and Operating Instructions. The important precautions, safeguards and instructions appearing in this manual are not meant to cover all possible situations. It must be understood that common sense and caution are factors which cannot be built into the product.

#### EYE, EAR & LUNG PROTECTION

SYMBOL	MEANING
	<p><b>ALWAYS WEAR EYE PROTECTION THAT CONFORMS WITH CSA Z94.3 or ANSI SAFETY STANDARD Z87.1</b></p> <p>FLYING DEBRIS can cause permanent eye damage. Prescription eyeglasses ARE NOT a replacement for proper eye protection.</p> <p><b>Non-compliant eyewear can cause serious injury if broken during the operation of a power tool.</b></p>
	<p><b>Use hearing protection, particularly during extended periods of operation of the tool, or if the operation is noisy.</b></p>
	<p><b>WEAR A DUST MASK THAT IS DESIGNED TO BE USED WHEN OPERATING A POWER TOOL IN A DUSTY ENVIRONMENT.</b></p> <p>Dust that is created by power sanding, sawing, grinding, drilling, and other construction activities may contain chemicals that are known to cause cancer, birth defects, or other genetic abnormalities.</p> <p>These chemicals include:</p> <ul style="list-style-type: none"> <li>• Lead from lead-based paints</li> <li>• Crystalline silica from bricks, cement, and other masonry products</li> <li>• Arsenic and chromium from chemically treated lumber the level of risk from exposure to these chemicals varies, according to how often this type of work is performed. In order to reduce exposure to these chemicals, work in a well-ventilated area, and use approved safety equipment, such as a dust mask that is specifically designed to filter out microscopic particles.</li> </ul>
	<p><b>To avoid electrical hazards, fire hazards or damage to the tool, use proper circuit protection.</b></p> <p>This tool is wired at the factory for 120 V AC operations.</p> <p>It must be connected to a 120 V AC, 15 A circuit that is protected by a time-delayed fuse or circuit breaker. To avoid shock or fire, replace power cord immediately if it is worn, cut, or damaged in any way.</p>

## ***POWER TOOL SAFETY***

- **KNOW YOUR POWER TOOL.** Read the operator's manual carefully. Learn the saw's applications and limitations as well as the specific potential hazards related to this tool.
- **GUARD AGAINST ELECTRICAL SHOCK BY PREVENTING BODY CONTACT WITH GROUNDED SURFACES.** For example, pipes, radiators, ranges, refrigerator enclosures.
- **KEEP GUARDS IN PLACE** and in good working order.
- **REMOVE ADJUSTING KEYS AND WRENCHES.** Form habit of checking to see that keys and adjusting wrenches are removed from tool before turning it on.
- **KEEP WORK AREA CLEAN.** Cluttered areas and benches invite accidents. **DO NOT** leave tools or pieces of tile on the saw while it is in operation.
- **DO NOT USE IN DANGEROUS ENVIRONMENTS.** Do not use power tools in damp or wet locations or expose to rain. Keep the work area well lit.
- **KEEP CHILDREN AND VISITORS AWAY.** All visitors should wear safety glasses and be kept a safe distance from work area. Do not let visitors contact tool or extension cord while operating.
- **MAKE WORKSHOP CHILDPROOF** with padlocks and master switches, or by removing starter keys.
- **DON'T FORCE TOOL.** It will do the job better and safer at the feed rate for which it was designed.
- **USE RIGHT TOOL.** Don't force the tool or attachment to do a job it was not designed for. Don't use it for a purpose not intended.
- **USE THE PROPER EXTENSION CORD.** Make sure your extension cord is in good condition. Use only a cord heavy enough to carry the current your product will draw. An undersized cord will cause a drop in line voltage resulting in loss of power and overheating. A wire gauge size (A.W.G.) of at least 14 is recommended for an extension cord 25 feet or less in length. If in doubt, use the next heavier gauge. The smaller the gauge number, the heavier the cord.
- **DRESS PROPERLY.** Do not wear loose clothing, gloves, neckties, or jewellery. They can get caught and draw you into moving parts. Rubber gloves and nonskid footwear (rubber soled boots) are recommended when working outdoors. Also wear protective hair covering to contain long hair.
- **ALWAYS WEAR SAFETY GLASSES WITH SIDE SHIELDS.** Everyday eyeglasses have only impact-resistant lenses, they are **NOT** safety glasses.
- **SECURE WORK.** Use clamps or a vise to hold work when practical, it is safer than using your hand and frees both hands to operate the tool.
- **DON'T OVERREACH.** Keep proper footing and balance at all times.
- **MAINTAIN TOOLS WITH CARE.** Keep tools sharp and clean for better and safer performance. Follow instructions for lubricating and changing accessories.
- **DISCONNECT TOOLS.** When not in use, before servicing, or when changing attachments, wheels, bits, cutters, etc., all tools should be disconnected.
- **AVOID ACCIDENTAL STARTING.** Be sure switch is off when plugging in any tool.
- **USE RECOMMENDED ACCESSORIES.** Consult the operator's manual for recommended accessories. The use of improper accessories may risk injury.
- **NEVER STAND ON TOOL.** Serious injury could occur if the tool is tipped or if the cutting tool is unintentionally contacted.
- **CHECK DAMAGED PARTS.** Before further use of the tool, a guard or other part that is damaged should be carefully checked to determine that it will operate properly and perform its intended function. Check for alignment of moving parts, binding of moving parts, breakage of parts, mounting and any other conditions that may affect its operation. A guard or other part that is damaged must be properly repaired or replaced by an authorized service center to avoid risk of personal injury.
- **USE THE RIGHT DIRECTION OF FEED.** Feed work into a wheel or cutter against the direction of rotation of wheel or cutter only.
- **NEVER LEAVE TOOL RUNNING UNATTENDED. TURN THE POWER OFF.** Don't leave tool until it comes to a complete stop.
- **PROTECT YOUR LUNGS.** Wear a face or dust mask if the cutting operation is dusty.
- **PROTECT YOUR HEARING.** Wear hearing protection during extended periods of operation.

- **DO NOT ABUSE CORD.** Never yank cord to disconnect from receptacle. Keep cord away from heat, oil, and sharp edges.
- **ALWAYS USE AN OUTDOOR EXTENSION CORD MARKED “W-A” OR “W”.** These cords are rated for outdoor use and reduce the risk of electric shock.
- **ALWAYS KEEP THE SPLASH HOOD IN PLACE** and in working order.
- **KEEP HANDS AWAY FROM CUTTING AREA.** Keep hands away from blades. Do not reach underneath work or around or over the blade while blade is rotating. Do not attempt to remove cut material when blade is moving.
- **BLADE COASTS AFTER BEING TURNED OFF.**
- **NEVER USE IN AN EXPLOSIVE ATMOSPHERE.**  
Normal sparking of the motor could ignite fumes.
- **INSPECT TOOL CORDS PERIODICALLY.** If damaged, have repaired by a qualified service technician at an authorized service facility.
- **INSPECT EXTENSION CORDS PERIODICALLY and replace if damaged.**
- **GROUND ALL TOOLS.** If tool is equipped with three- prong plug, it should be plugged into a three-hole electrical receptacle.
- **ONLY POWER THE TOOL WITH A GFCI (GROUND FAULT CIRCUIT INTERRUPTOR) PROTECTED OUT- LET.**
- **CHECK WITH QUALIFIED ELECTRICIAN or service personnel** if the grounding instructions are not completely understood or if in doubt as to whether the tool is properly grounded.
- **USE ONLY CORRECT ELECTRICAL DEVICES:** 3-wire extension cords that have 3-prong grounding plugs and 3-pole receptacles that accept the tool's plug.
- **DO NOT MODIFY** the plug provided. If it will not fit the outlet, have the proper outlet installed by a qualified electrician.
- **KEEP TOOL DRY, CLEAN, AND FREE FROM OIL AND GREASE.** Always use a clean cloth when cleaning. Never use brake fluids, gasoline, petroleum-based products, or any solvents to clean tool.
- **STAY ALERT AND EXERCISE CONTROL.** Watch what you are doing and use common sense. Do not operate tool when you are tired. Do not rush.
- **DO NOT USE TOOL IF SWITCH DOES NOT TURN IT ON AND OFF.** Have defective switches replaced by an authorized service center.
- **USE ONLY CORRECT BLADES.** Do not use blades with incorrect size holes. Never use washers or arbor nuts that are defective or incorrect. The maximum blade capacity of your saw is 7 in. (178 mm).
- **BEFORE MAKING A CUT, BE SURE ALL ADJUST- MENTS ARE SECURE.**
- **NEVER TOUCH BLADE** or other moving parts during use.
- **NEVER START A TOOL WHEN ANY ROTATING COMPONENT IS IN CONTACT WITH THE WORKPIECE.**
- **DO NOT OPERATE A TOOL WHILE UNDER THE INFLUENCE OF DRUGS, ALCOHOL, OR ANY MEDICATION.**
- **WHEN SERVICING** use only identical replacement parts. Use of any other parts may create a hazard or cause product damage.
- **USE ONLY RECOMMENDED ACCESSORIES** listed in this manual or addendums. Use of accessories that are not listed may cause the risk of personal injury. Instructions for safe use of accessories are included with the accessory.
- **DOUBLE CHECK ALL SETUPS.** Make sure blade is tight and not contacting saw or workpiece before connecting to power supply.
- **STAY ALERT AND EXERCISE CONTROL.** Watch what you are doing and use common sense. Do not operate tool when you are tired. Do not rush.
- **DO NOT USE TOOL IF SWITCH DOES NOT TURN IT ON AND OFF.** Have defective switches replaced by an authorized service center.
- **USE ONLY CORRECT BLADES.** Do not use blades with incorrect size holes. Never use washers or arbor nuts that are defective or incorrect. The maximum blades capacity of your saw is 7 in. (178 mm).
- **BEFORE MAKING A CUT, BE SURE ALL ADJUST MENTS ARE SECURE.**

- **NEVER TOUCH BLADE** or other moving parts during use.
- **NEVER START A TOOL WHEN ANY ROTATING COMPONENT IS IN CONTACT WITH THE WORKPIECE.**
- **DO NOT OPERATE A TOOL WHILE UNDER THE INFLUENCE OF DRUGS, ALCOHOL, OR ANY MEDICATION.**
- **WHEN SERVICING** use only identical replacement parts. Use of any other parts may create a hazard or cause product damage.
- **USE ONLY RECOMMENDED ACCESSORIES** listed in this manual or addendums. Use of accessories that are not listed may cause the risk of personal injury. Instructions for safe use of accessories are included with the accessory.
- **DOUBLE CHECK ALL SETUPS.** Make sure wheel is tight and not contacting saw or workpiece before connecting to power supply.

## SERVICE

Have your power tool serviced by a qualified repair person using only identical replacement parts. This will ensure that the safety of the power tool is maintained.

## **SPECIFIC SAFETY RULES**



**WARNING:** Know your wet tile saw. Do not use the wet tile saw until you have read and understand this Instruction Manual. Learn the tool's applications and limitations, as well as the specific potential hazards related to this tool. Following this rule will reduce the risk of electric shock, fire, or serious injury.



Always wear eye protection. Any power tool can throw foreign objects into your eyes and cause permanent eye damage. **ALWAYS** wear safety goggles (not glasses) that comply with ANSI safety standard Z87.1. Everyday glasses have only impact resistant lenses. They **ARE NOT** safety glasses.



**WARNING:** Glasses or goggles not in compliance with ANSI Z87.1 could cause serious injury when they break.

- **SECURE WORK** firmly against the miter guide or fence.
- **NEVER** stand or have any part of your body in line with the path of the blade.
- **NEVER** attempt to free a stalled blade without first turning the saw **OFF** and disconnecting the saw from the power source.
- **IF THE POWER SUPPLY CORD IS DAMAGED**, it must be replaced only by the manufacturer or by an authorized service center to avoid risk.
- **AVOID AWKWARD OPERATIONS AND HAND POSITIONS** where a sudden slip could cause your hand to move into the cutting tool.
- **MAKE SURE THE WORK AREA HAS AMPLE LIGHTING** to see the work and that no obstructions will interfere with safe operation **BEFORE** performing any work using the saw.
- **ALWAYS TURN OFF SAW** before disconnecting it, to avoid accidental starting when reconnecting to power supply.
- **THIS TOOL** should have the following markings:
  - Wear eye, hearing, and breathing protection.
  - Use splash hood for every operation for which it can be used.
  - Disconnect saw before servicing, when changing cutting wheels, and cleaning.
  - Use tool only with smooth edge cutting wheels free of openings, grooves, and teeth.
  - Replace damaged cutting wheel before operating.
  - Do not fill water bath above water fill line.
- **SAVE THESE INSTRUCTIONS.** Refer to them frequently and use to instruct other users. If you loan someone this tool, loan them these instructions too.

## SAFETY SYMBOLS

The rating plate on your tool may show symbols. These represent important information about the product or instructions on its use.

	<p>WARNING: Please read all the safety and operating instructions carefully before using this tool. Please pay particular attention to all sections of this User Guide that carry warning symbols and notices. Some of the following symbols may be used on this tool.</p>
	<p>Observe caution and safety notes. To reduce the risk of injury, user must read and understand User Guide before using this tool.</p>
	<p>Wear ear protection.</p>
	<p>Wear protective helmet and eye protection.</p>
	<p>Switch off and remove plug from power source before cleaning or maintenance.</p>
	<p>Do not use in the rain or leave outdoors while it is raining.</p>
	<p>Keep bystanders away.</p>
	<p>Don't touch the inlet and outlet when the vacuum cover is opened, or the tube is removed.</p>
	<p>Double insulation.</p>
	<p>Remove plug from the power source immediately if the power cord is damaged or cut.</p>



This symbol designates that this tool is listed with Canadian and U.S. requirements by ETL Testing Laboratories, Inc. [Conforms to UL 987:2011 Ed.8+R:19Dec2013] Certified to the CSA C22.2 # 71.2:2010 Ed. 4+U1



## SAVE THIS USER MANUAL



### WARNING

MISUSE or failure to follow the safety rules stated in this instruction manual may cause serious personal injury.

MINIMUM GAUGE (AWG) EXTENSION CORD (120 V use only)					
Amperage rate		Total length			
More than	Not more than	25' (7.5 m)	50' (15 m)	100' (30 m)	150' (45m)
0	6	18	16	16	14
6	10	18	16	14	12
10	12	16	16	14	12
12	16	14	12	Not Applicable	

## ELECTRICAL CONNECTION

This tool is powered by a precision built electric motor. It should be connected to a **power supply that is 120 V, AC only (normal household current), 60 Hz**. Do not operate this tool on direct current (DC). A substantial voltage drop will cause a loss of power and the motor will overheat. If the saw does not operate when plugged into an outlet, double check the power supply.

## SPEED AND WIRING

The no-load speed of this tool is approximately 3,450 rpm.

This speed is not constant and decreases under a load or with lower voltage. For voltage, the wiring in a shop is as important as the motor's horsepower rating. A line intended only for lights cannot properly carry a power tool motor. Wire that is heavy enough for a short distance will be too light a greater distance. A line that can support one power tool may not be able to support two or three tools.

## GROUNDING INSTRUCTIONS

### ALL GROUNDED, CORD-CONNECTED TOOLS:

In the event of a malfunction or breakdown, grounding provides a path of least resistance for electric current to reduce the risk of electric shock. This tool is equipped with an electric cord having an equipment-grounding conductor and grounding plug. The plug must be plugged into a matching outlet that is properly installed and grounded in accordance with all local codes and ordinances.

Do not modify the plug provided – if it will not fit the outlet, have the proper outlet installed by a qualified electrician.

## POSITION OF THE TILE SAW

To avoid the possibility of the tool plug or outlet getting wet, position tile saw to one side of a wall-mounted outlet to prevent water from dripping onto the outlet or plug. The operator should arrange a “drip loop” in the cord connecting the saw to the outlet. The “drip loop” is that part of the cord below the level of the outlet, or the connector if an extension cord is used, to prevent water traveling along the cord to run into the outlet.

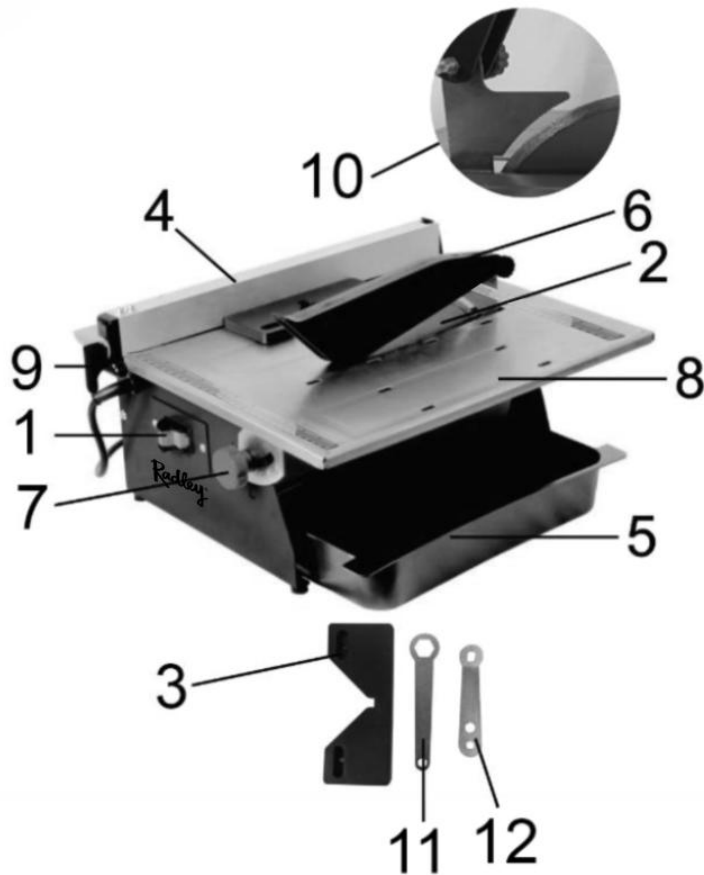
If the plug or outlet does get wet, DO NOT unplug the cord. Disconnect the fuse or circuit breaker that supplies power to the tool then unplug and examine for the presence of water in the outlet.

### WARNING:

To reduce the risk of electrocution, keep all connections dry and off the ground. Do not touch the plug with wet hands.

## KNOW YOUR WET TILE SAW

1. On/off switch
2. Diamond cutting blade
3. Mitre cutting guide
4. Parallel guide fence
5. Water container
6. Blade guard/Splash Hood
7. Table tilting knob
8. Worktable
9. Parallel guide fence securing knob
10. Riving Knife
11. 1x19 mm wrench
12. 1x8mm wrench



## ASSEMBLY AND OPERATION

The safe use of this product requires an understanding of the tool and this operator's manual as well as a knowledge of the project you are attempting. Before use of this product, familiarize yourself with all operating features and safety rules.

### IMPORTANT! IMMEDIATELY SWITCH OFF THE MACHINE IN CASE OF:

1. Malfunction of the plug, receptacle, or damage to power supply cord.
2. Broken switch.
3. Smoke or odor caused by scorched insulation.

## BEFORE OPERATING THE MACHINE

### 1. CHOOSE THE CORRECT SAW BLADE.

Use only a diamond saw blade with a minimum diameter of 6 inches and a maximum diameter of 7 inches. The arbor hole must be 5/8". The 7" diamond saw blade comes assembled on the machine

### 2. FITTING THE RIVING KNIFE/BLADE GUARD

Insert the riving knife into the table so that the threaded section of the knife is under the surface of the table. Insert the two securing screws (fig.1) and align the knife with the blade ensuring that there is a gap of no more than 5mm between the blade and the riving knife. Do not use the machine without the blade guard fitted.

### 3. FILLING THE WATER CONTAINER

- a. To remove the container, slide it outwards until it meets the blade housing (fig.3).
- b. Lift the container side from the machine until the container can be removed completely. Fill the container to 3/4 full of water. Do not add chemicals or detergents to the water.
- c. Insert the container in the opposite manner to removal.

### 4. FITTING THE RIP GUIDE

- a. Place the rip guide at either end of the cutting table and slide it onto the cutting table track.
- b. Once you have positioned the rip guide at the desired location on the cutting table then tighten the wing screws into the square support brackets.
- c. Make sure that the rip guide is parallel to the blade once you tighten it down.

## STARTING AND STOPPING THE MACHINE

1. Connect the unit to a power supply of the correct voltage and frequency (120V - 60Hz).
2. To start the machine, press the red button marked "ON" (fig.2).
3. To stop the machine, press the red button marked "OFF" (fig. 2).

**⚠ WARNING:** This machine is fitted with a "no volt" release switch. In the event of a mains power failure the switch will release and will need to be reset when power is restored. This eliminates the possibility of the machine starting up unexpectedly.

## MAKING A CUT

Adjust the parallel guide fence to the desired width from the blade using the scale rules on the table surface for reference. Press the tightening knob down, then tighten it (fig. 4)

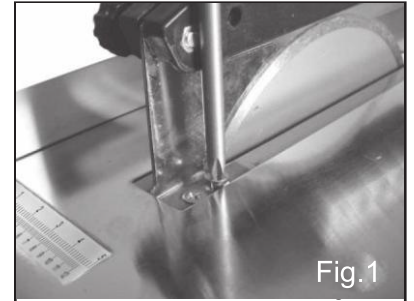


Fig.1

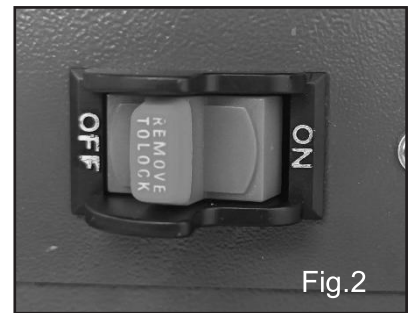


Fig.2

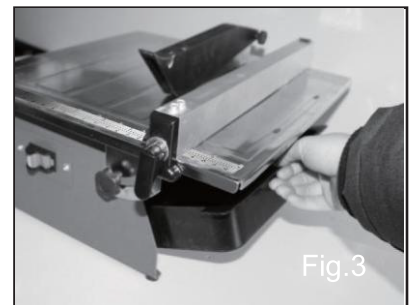


Fig.3



Fig.4

**⚠ WARNING:** The scale rules are for reference only. For improved accuracy it is advised that a secondary rule should be used. Position the tile firmly against the rip fence and pass through the blade in a smooth action. Do not force the tile to be cut too quickly.

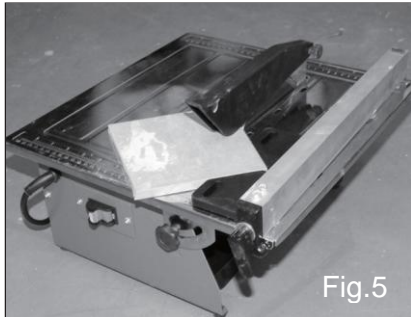


Fig.5

## MAKING A MITRE CUT

Follow the same procedure for a straight cut but employ the mitre guide in conjunction with parallel guide fence (fig.5). Ensure that the tile is held firmly into the guide before making the cut.

## CUTTING WITH THE TABLE ON AN ANGLE

Loosen the two table securing knobs (front and rear). Tilt the table to the desired angle using the scale on the table (fig. 6). Re-secure the table and make the cut as before.

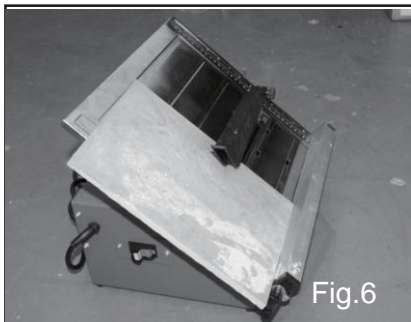


Fig.6

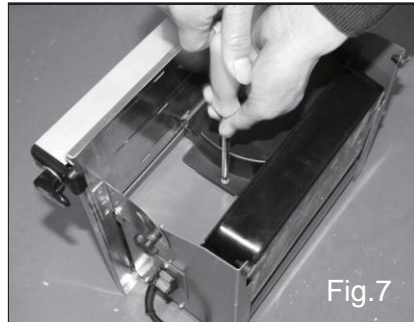


Fig.7

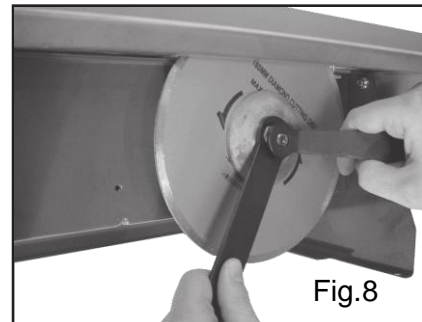


Fig.8

## CHANGING THE BLADE

**⚠ WARNING:** This tile cutter is only designed for wet cutting, and only the continuous rim diamond blade can be used

1. Unplug the machine from the power source
2. Remove the water tank from underneath the machine
3. Remove the lower blade guard by removing the screws on each side of the lower blade guard (fig.7)
4. Use suitable wrenches to loosen and remove the arbor nut from the motor spindle as shown in (fig.8)
5. Slide the outer flange (fig.8) and the diamond blade off the end of the motor spindle
6. Slide the new diamond blade and the outer flange over the end of the motor spindle.

Note: make sure the directional arrow printed on the diamond blade is pointing in A counterclockwise direction when viewing the machine facing the arbor nut.

7. Thread and tighten the arbor nut onto the motor spindle to secure the diamond blade
8. Re-install the lower blade guard.

## ***MAINTENANCE***

### **GENERAL**



**WARNING:** When servicing this tool, use only identical replacement parts. The use of any other part may create a hazard or cause product damage. DO NOT use solvents when cleaning plastic parts. Plastics are susceptible to damage from various types of commercial solvents and may be damaged by their use. Use a clean cloth to remove dirt, dust, oil, grease etc.



**WARNING:** Do not allow brake fluids, gasoline, petroleum-based fluids, gasoline. Petroleum-based products, penetrating oils, etc. to come into contact with plastic parts. They contain chemicals that can damage, weaken, or destroy plastic (DO NOT abuse power tools, Abusive practices can damage the tool and the workpiece)



**WARNING:** Do not attempt to modify tools or create accessories. Any such alteration or modification is misuse and could result in hazardous condition leading to possible serious injury. It will also void the warranty.

- Periodic maintenance of your saw will prevent unnecessary problems.
- Keep the ventilation slots of the cutting machine clean to prevent overheating of the motor.
- Keep the water reservoir filled with clean water. Replace used water with clean water about once an hour during continuous use. After use, be sure to clean cutting residue and dirty water off machine before putting it away.

## ***LUBRICATION***

All the bearings in this tool are lubricated with enough high-grade lubricant for the life of the unit under normal conditions. Therefore, no further lubrication is required.

## ***TROUBLESHOOTING***

Below is a list of possible problems and corresponding actions:

1. The motor becomes hot

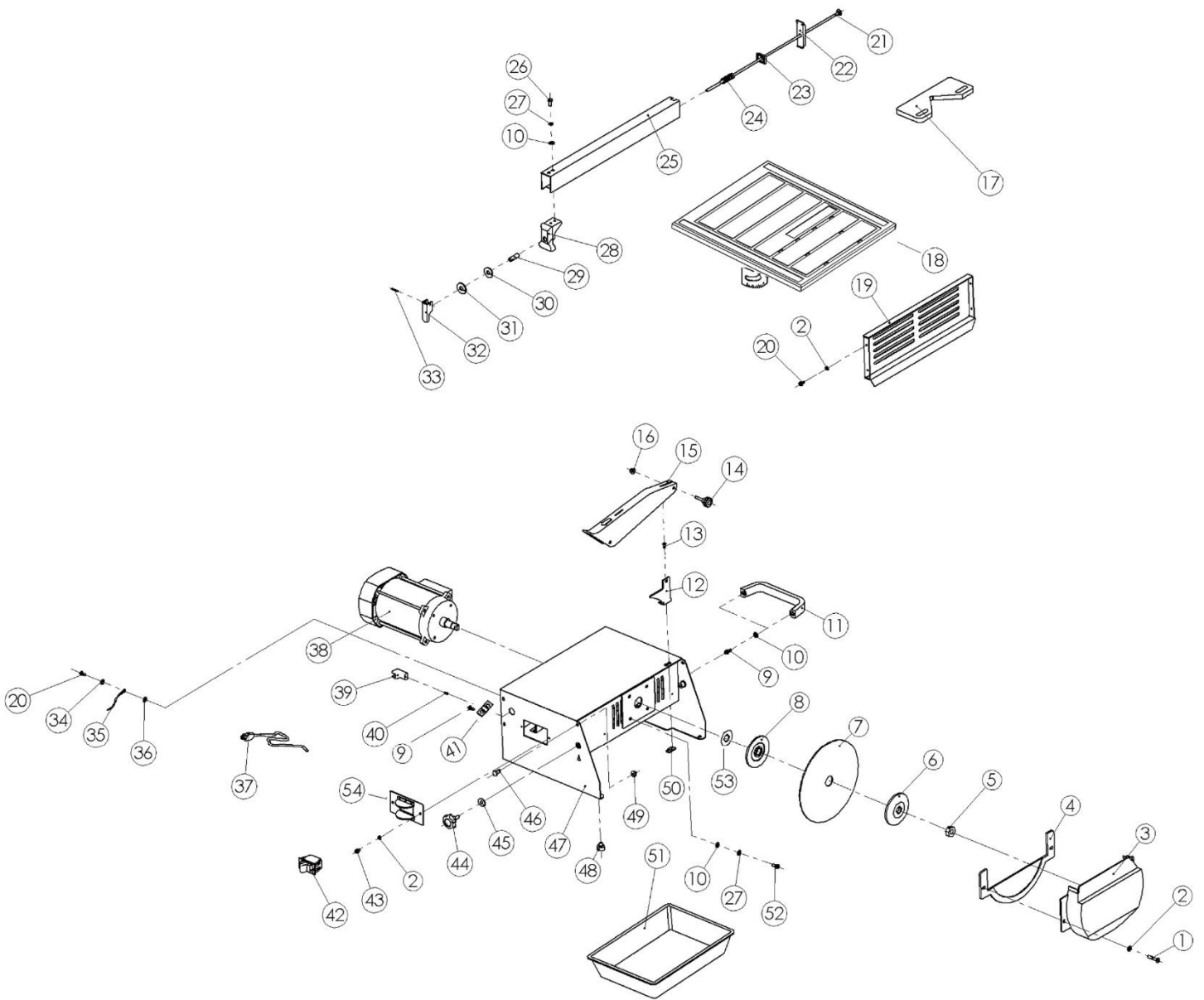
The cooling ventilation slots in the motor are blocked with dirt. Clean the cooling ventilation slots.

2. The machine does not work

The power supply source is being interrupted. Check power supply cord connection.

Check circuit breaker for power line. Check on-off switch.

## EXPLODED VIEW



**PARTS LIST**

**WARNING** When servicing, use only original equipment replacement parts. The use of any other parts may create a safety hazard or cause damage to the tool. Any attempt to repair or replace electrical parts on this saw may create a safety hazard unless repairs are performed by a qualified technician. For more information, call the Toll-free Helpline, at 1-866-349-8665.

Always order by **PART NUMBER**, not by key number.

Key#	Part #	Part Name	Qty
1	1346-801-001	Screw M4x25	1
2	1346-801-002	Washer	2
3	1346-801-003	Bottom Guard	2
4	1346-801-004	Bottom Cover	1
5	1346-801-005	Nut M12	1
6	1346-801-006	Outer Flange	1
7	1346-801-007	Blade	1
8	1346-801-008	Inner Flange	1
9	1346-801-009	Screw M5x10	4
10	1346-801-010	Washer	1
11	1346-801-011	Handle	1
12	1346-801-012	Guard holder	1
13	1346-801-013	Screw M4x10	2
14	1346-801-014	Guard knob	2
15	1346-801-015	Top Guard	2
16	1346-801-016	Nut M5	1
17	1346-801-017	Angle Guide	1
18	1346-801-018	Table	1
19	1346-801-019	Back Cover	1
20	1346-801-020	Screw M4x8	4
21	1346-801-021	Connecting Rod	2
22	1346-801-022	Clamp	1
23	1346-801-023	Washer	1
24	1346-801-024	Spring	1
25	1346-801-025	Cutting Guide	1
26	1346-801-026	Bolt M5x10	1
27	1346-801-027	Spring Washer	1
28	1346-801-028	Fixed Clamp	1
29	1346-801-029	Connecting Pin	1

Key#	Part #	Part Name	Qty
30	1346-801-030	Washer	1
31	1346-801-031	Washer	2
32	1346-801-032	Tightening Lever	2
33	1346-801-033	Cylindrical pin 3x16	1
34	1346-801-034	Spring Washer	1
35	1346-801-035	Ground Terminal	1
36	1346-801-036	Washer	1
37	1346-801-037	Cord	1
38	1346-801-038	Motor	4
39	1346-801-039	Cable Clamp	1
40	1346-801-040	Screw ST2.9x10	1
41	1346-801-041	Cord clamping	1
42	1346-801-042	Self-locking switch	2
43	1346-801-043	Screw M4x6	2
44	1346-801-044	Tightening knob	2
45	1346-801-045	Washer	1
46	1346-801-046	Bolt M6x12	1
47	1346-801-047	Box Assembly	1
48	1346-801-048	Washer	1
49	1346-801-049	Nut M6	4
50	1346-801-050	Nut	2
51	1346-801-051	Water Container	1
52	1346-801-052	Screw M5x16	1
53	1346-801-053	Washer	1
54	1346-801-054	Switch plate	1



## ***WARRANTY***

### **Wet Tile Saw**

If this Radley tool fails due to a defect in material or workmanship within three years from the date of purchase, return it to any Home Hardware store with the original bill of sale for exchange. Two years for battery and charger. This warranty does not include expendable parts including but not limited to blades, brushes, belts, and light bulbs. This warranty covers defects in material or workmanship only. It does not cover normal wear and tear, failure due to abuse/misuse, or defects caused by careless or accidental mishandling. If this Radley product is used for commercial or rental purposes, this warranty does not apply.

# 7" WET TILE SAW

## Owner's Manual



3 Year Limited Warranty on tool

**Radley®**

**RADLEY TOOLS**  
ST. JACOBS, ONTARIO N0B 2N0  
© 2022 Home Hardware Stores Limited  
**1-866-349-8665**  
Customer Service/Tech Support

**1346-801**

Made in China

**3 Year  
warranty**

This Radley® product carries a three (3) year LIMITED warranty against defects in workmanship and materials. See Owner's Manual for full details.



**Intertek**  
ETL5012126  
TCUL180A

**READ ALL INSTRUCTIONS BEFORE FIRST USE.  
KEEP THIS MANUAL FOR FUTURE REFERENCE.  
KEEP AWAY FROM CHILDREN.**



**WEAR CSA APPROVED  
EYE PROTECTION**



**WEAR EAR  
PROTECTION**



**WEAR FACE  
PROTECTION**