

# Radley®

## *Multi-Purpose Sharpener* OWNER'S MANUAL



*3 Year  
warranty*

3 Year Limited Warranty



READ ALL INSTRUCTIONS BEFORE FIRST USE. KEEP THIS  
MANUAL FOR FUTURE REFERENCE. KEEP AWAY FROM  
CHILDREN.



WEAR CSA APPROVED  
EYE PROTECTION



WEAR EAR  
PROTECTION



WEAR FACE  
PROTECTION

## **TABLE OF CONTENTS**

Product Specifications .....	1
Table of Contents.....	2
Safety Guidelines.....	3-6
Symbols .....	9
Tool specific warnings .....	10
Know your Sharpener .....	10
Assembly and Operating.....	11-14
Maintenance .....	15-18
Exploded View .....	15
Parts List .....	16-17
Warranty .....	18

***PRODUCT SPECIFICATIONS***

<b>Multipurpose sharpener</b>	
Rating:	120 V, 60 Hz AC
Amperes:	1 A
Grinding speed:	5,500 RPM (no load)
Sharpens Bit sizes	1/8-1/2" (3-13mm)
Tool Weight	4.6 lbs.(2.1kg)

**NEED ASSISTANCE?**

Call us on our toll-free customer support line:

1-866-349-8665 (Monday through Friday 9am – 5pm Eastern Standard Time)

1. Technical questions
2. Replacement parts
3. Parts missing from package

## **GENERAL SAFETY WARNINGS**



**WARNING:** Before using this tool or any of its accessories, read this manual and follow all Safety Rules and Operating Instructions. The important precautions, safeguards and instructions appearing in this manual are not meant to cover all possible situations. It must be understood that common sense and caution are factors which cannot be built into the product.

## **EYE, EAR & LUNG PROTECTION**



**ALWAYS WEAR EYE PROTECTION THAT CONFORMS WITH CSA REQUIREMENTS or ANSI SAFETY STANDARD Z87.1**

FLYING DEBRIS can cause permanent eye damage. Prescription eyeglasses ARE NOT a replacement for proper eye protection.



**WARNING:** Non-compliant eyewear can cause serious injury if broken during the operation of a power tool.



**WARNING:** Use hearing protection, particularly during extended periods of operation of the tool, or if the operation is noisy.

**SAVE THESE INSTRUCTIONS FOR REFERENCE**



**WEAR A DUST MASK THAT IS DESIGNED TO BE USED WHEN OPERATING A POWER TOOL IN A DUSTY ENVIRONMENT.**



**WARNING:** Dust that is created by power sanding, sawing, grinding, drilling, and other construction activities may contain chemicals that are known to cause cancer, birth defects, or other genetic abnormalities. These chemicals include:

Lead from lead-based paints

Crystalline silica from bricks, cement, and other masonry products

Arsenic and chromium from chemically treated lumber

The level of risk from exposure to these chemicals varies, according to how often this type of work is performed. In order to reduce exposure to these chemicals, work in a well-ventilated area, and use approved safety equipment, such as a dust mask that is specifically designed to filter out microscopic particles.

## ELECTRICAL SAFETY



**WARNING: To avoid electrical hazards, fire hazards or damage to the tool, use proper circuit protection.**

This tool is wired at the factory for 120 V AC operation. It must be connected to a 120 V AC, 15 A circuit that is protected by a time-delayed fuse or circuit breaker. To avoid shock or fire, replace power cord immediately if it is worn, cut or damaged in any way.

**⚠ WARNING:** Read all safety warnings and instructions. Failure to follow the warnings and instructions may result in electric shock, fire and/or serious injury.

Save all warnings and instructions for future reference.

### Work area safety

**Keep work area clean and well lit.** Cluttered or dark areas invite accidents.

**Do not operate power tools in explosive atmospheres, such as in the presence of flammable liquids, gases, or dust.** Power tools create sparks which may ignite the dust or fumes.

**Keep children and bystanders away while operating a power tool.** Distractions can cause you to lose control.

### Electrical safety

**Power tool plugs must match the outlet. Never modify the plug in any way. Do not use any adapter plugs with earthed (grounded) power tools.** Unmodified plugs and matching outlets will reduce risk of electric shock.

**Avoid body contact with earthed or grounded surfaces such as pipes, radiators, ranges, and refrigerators.** There is an increased risk of electric shock if your body is earthed or grounded.

**Do not expose power tools to rain or wet conditions.** Water entering a power tool will increase the risk of electric shock.

**Do not abuse the cord. Never use the cord for carrying, pulling, or unplugging the power tool. Keep cord away from heat, oil, sharp edges or moving parts.** Damaged or entangled cords increase the risk of electric shock.

**When operating a power tool outdoors, use an extension cord suitable for outdoor use.** Use of a cord suitable for outdoor use reduces the risk of electric shock.

**If operating a power tool in a damp location is unavoidable, use a residual current device (RCD) protected supply.** Use of a ground fault circuit interrupter (GFCI) reduces the risk of electric shock.

### Personal safety

**Stay alert, watch what you are doing and use common sense when operating a power tool. Do not use a power tool while you are tired or under the influence of drugs, alcohol, or medication.** A moment of inattention while operating power tools may result in serious personal injury.

**Use personal protective equipment. Always wear eye protection.** Protective equipment such as dust mask, non-skid safety shoes, hard hat, or hearing protection used for appropriate conditions will reduce personal injuries.

**Prevent unintentional starting. Ensure the switch is in the off position before connecting to power source and/or battery pack, picking up or carrying the tool.** Carrying power tools with your finger on the switch or energizing power tools that have the switch on invites accidents.

**Remove any adjusting key or wrench before turning the power tool on.** A wrench or a key left attached to a rotating part of the power tool may result in personal injury.

**Do not overreach. Keep proper footing and balance at all times.** This enables better control of the power tool in unexpected situations.

**Dress properly. Do not wear loose clothing or jewellery. Keep your hair, clothing, and gloves away from moving parts.** Loose clothes, jewellery or long hair can be caught in moving parts.

## **POWER TOOL SAFETY**

*Personal safety – cont'd*

**If devices are provided for the connection of dust extraction and collection facilities, ensure these are connected and properly used.** Use of dust collection can reduce dust-related hazards.

### **Power tool use and care**

**Do not force the power tool. Use the correct power tool for your application.** The correct power tool will do the job better and safer at the rate for which it was designed.

**Do not use the power tool if the switch does not turn it on and off.** Any power tool that cannot be controlled with the switch is dangerous and must be repaired.

**Disconnect the plug from the power source and/or the battery pack from the power tool before making any adjustments, changing accessories, or storing power tools.** Such preventive safety measures reduce the risk of starting the power tool accidentally.

**Store idle power tools out of the reach of children and do not allow persons unfamiliar with the power tool or these instructions to operate the power tool.** Power tools are dangerous in the hands of untrained users.

**Maintain power tools. Check for misalignment or binding of moving parts, breakage of parts and any other condition that may affect the power tool's operation. If damaged, have the power tool repaired before use.** Many accidents are caused by poorly maintained power tools.

**Keep cutting tools sharp and clean.** Properly maintained cutting tools with sharp cutting edges are less likely to bind and are easier to control.

**Use the power tool, accessories, and tool bits etc. in accordance with these instructions, taking into account the working conditions and the work to be performed.** Use of the power tool for operations different from those intended could result in a hazardous situation.

### **Service**

**Have your power tool serviced by a qualified repair person using only identical replacement parts.** This will ensure that the safety of the power tool is maintained.

## ***SPECIFIC SAFETY RULES***

**⚠ WARNING:** Know your multi-purpose sharpener. Do not plug in the tool until you have read and understand this Instruction Manual.

Learn the tool's applications and limitations, as well as the specific potential hazards related to this tool. Following this rule will reduce the risk of electric shock, fire, or serious injury.



Always wear eye protection. Any power tool can throw foreign objects into your eyes and cause permanent eye damage.

ALWAYS wear safety goggles (not glasses) that comply with ANSI safety standard Z87.1. Everyday glasses have only impact resistant lenses. They ARE NOT safety glasses.

1. Always remove the power cord from the power source before making 1. Always remove the power cord from the power source before making any adjustments or maintenance, including changing the wheel.
2. Always turn the sharpener off when it is not in use and never leave it unattended without first switching off and unplugging power cord. Never leave the sharpener until the wheel has come to a complete stop.
3. Do not use a wheel that has received a blow, especially to the side of the wheel. Replace a cracked or suspect wheel.
4. Always allow a new wheel to run for a few minutes at full speed before using it.
5. Check that the wheel rotates freely before each start up.
6. Do not use the sharpener unless all the attachments are properly fitted and secure.
7. Do not overload the sharpener. Allow the sharpener to run at full speed before use.
8. Never apply excessive pressure to the wheel. It might shatter causing personal injury.
9. Make sure the wheel is not in contact with the work when you start the sharpener.
10. When using the sharpener, use safety equipment including safety goggles or shield, ear protection, dust mask and protective clothing including safety gloves.

11. Abrasive grinding wheels should be stored and handled with care in compliance with the manufacturer's instructions.

12. Examine the grinding wheel before use; do not use chipped, cracked or otherwise deficient products.

13. Use only grinding wheels reinforced with organic bond (80m/s)

14. Make sure that the abrasive product is correctly mounted and clamped before use.

15. Avoid use in the presence of flammable materials or substances. Sparks created by the tool may ignite them.

16. Make sure air vents are unobstructed and cleaned of dust.

17. Grinding wheels continue to rotate after the motor stops.

18. If the supply cord is damaged, it must be replaced by the manufacturer, its service agent, or similarly qualified persons.

19. When servicing use only identical replacement parts

20. To reduce the risk of electric shock, this equipment has a polarized plug (one blade is wider than the other). This plug will fit in a polarized outlet only one way. If the plug does not fit fully in the outlet, reverse the plug. If it still does not fit, contact a qualified electrician to install the proper outlet. Do not change the plug in any way

21. Do not operate this tool in a damp location. Do not apply water to tool.



**GUIDELINES FOR EXTENSION CORDS**

**Make sure your extension cord is the proper size.** When using an extension cord, be sure to use one heavy enough to carry the current the tool will draw. An undersized cord will cause a drop in line voltage resulting in loss of power and overheating. The table on at right shows the correct size to use according to cord length and nameplate ampere rating. If in doubt, use the next heavier gauge. The smaller the gauge number the heavier the cord.

**Be sure your extension cord is properly wired and in good condition.** Always replace a damaged extension cord or have it repaired by a qualified electrician before using it. Protect your extension cord from sharp objects, excessive heat and damp or wet areas.

**⚠ WARNING: Repair or replace damaged or worn extension cords immediately.**

**Select the appropriate extension cord gauge and length using the chart to the right.**

When operating a power tool outdoors, use an outdoor extension cord marked “W -A” or “W”. These cords are rated for outdoor use and reduce the risk of electric shock.

**⚠ WARNING: Keep the extension cord clear of the working area. Position the cord so it will not get caught on the workpiece, tools, or any other obstructions while you are working with the power tool.**

MINIMUM GAUGE (AWG) EXTENSION CORDS (120 V use only)					
Ampere rating		Total length in feet			
More than	Not more than	7.5 m (25')	15 m (50')	30 m (100')	45 m (150')
0	6	18	16	16	14
6	10	18	16	14	12
10	12	16	16	14	12
12	16	14	12	Not Applicable	

## Symbols

**⚠ WARNING:** Some of the following symbols may appear on the tool. Study these symbols and learn their meaning. Proper interpretation of these symbols will allow for more efficient and safer operation of this tool.

V	Volts
A	Amperes
Hz	Hertz
W	Watts
kW	Kilowatts
μF	Microfarads
L	Liters
kg	Kilograms
H	Hours
N/cm <sup>2</sup>	Newtons per square centimeter
Pa	Pascals
OPM	Oscillations per minute
Min	Minutes
S	Seconds
or a.c.	Alternating current
	Three-phase alternating current
	Three-phase alternating current with neutral

	Direct current
$n_0$	No load speed
	Alternating or direct current
	Class II construction
	Splash-proof construction
	Watertight construction
	Protective grounding at grounding terminal, Class I tools
.../min	Revolutions or reciprocations per minute
∅	Diameter
0	Off position
	Directional arrow
	Warning symbol
	Wear your safety glasses



Intertek  
ETL3115903  
JS-950M

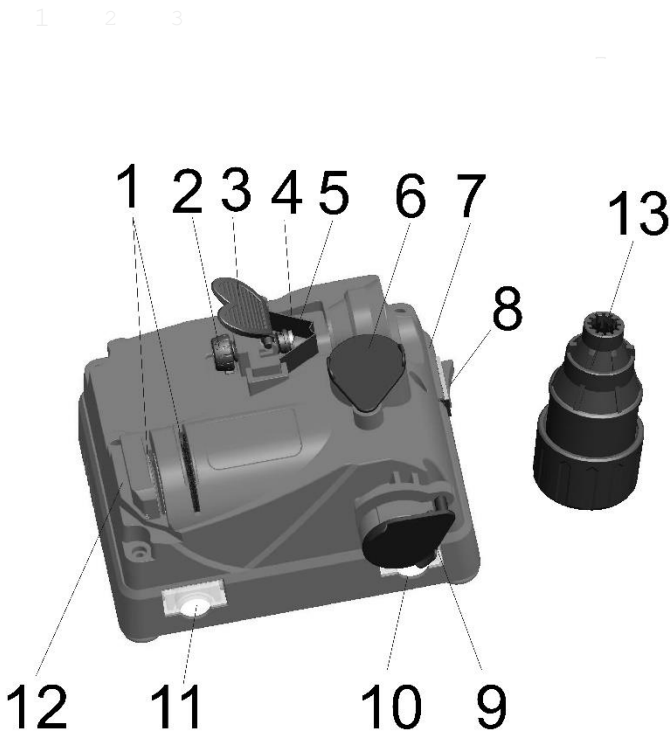
This symbol designates that this tool is listed with U.S. and Canadian requirements by ETL Testing Laboratories, Inc.

Conforms to UL Std.987

Certified to CAN/CSA-C22.2 No.71.2-08

**KNOW YOUR MULTI PURPOSE SHARPENER**

- 1. Hatchet and knife sharpener
- 2. Depth adjustment dial
- 3. Plunger
- 4. Internal Positioning Pad
- 5. Drill bit sharpener
- 6. Drill bit sharpener
- 7. Guide
- 8. ON/OFF switch
- 9. Drill bit sharpener
- 10. Dust Box
- 11. Dust Box
- 12. Scissor Sharpener
- 13. Drill bit holder



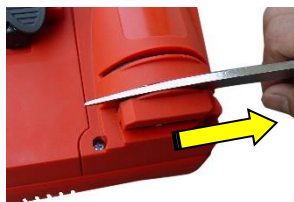
# SHARPENING TOOLS

1. Place the sharpener on a stable table or bench.
2. Plug the sharpener into a 120v~ 60Hz outlet.
3. Turn the tool ON by setting the switch to the "I" position.
4. Allow the sharpener to run for a few minutes.
5. Choose the desired sharpening slot according to the tool to be sharpened.

Fig. 1



Fig. 2



- a. To sharpen hatchets and similar tools, insert the blade of the tool into the sharpening slot and **pull the tool toward you, never push it!** (Fig. 1)
- b. To sharpen knives and kitchen utensils, place the blade in the guide and **pull the item to be sharpened toward you, never push it!** (Fig. 2)
- c. To sharpen scissors, place the blade in the guard on the oblique cut side and **pull toward you, never push blade.** (Fig.3)

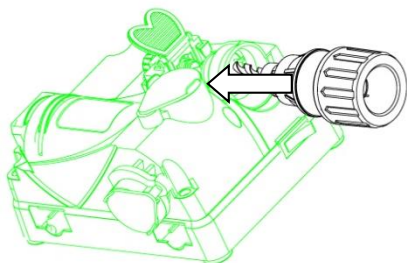


Fig. 3

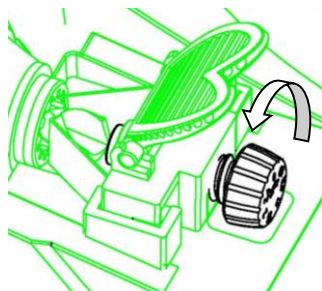
# SHARPENING DRILL BITS

1. Insert the Drill Bit Holder into the Guide and ensure the "rib" on the Holder matches with the rib on the Guide. (Fig. 4). Open the Drill Bit holder (turn counterclockwise) and adjust the depth dial to the desired setting. Adjust this setting with the plunger up and the positioning claws closed: 0 is the least material removed, 3 is the most (used for damaged drill bits) (Fig. 5).

**IMPORTANT:** Ensure you adjust the depth within the number range on the scale.

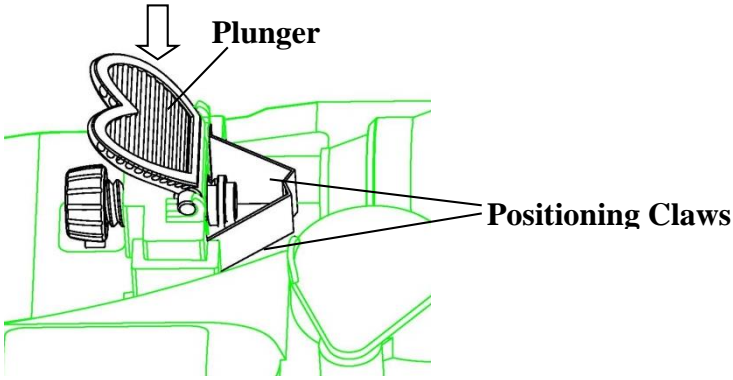


(Fig. 4)



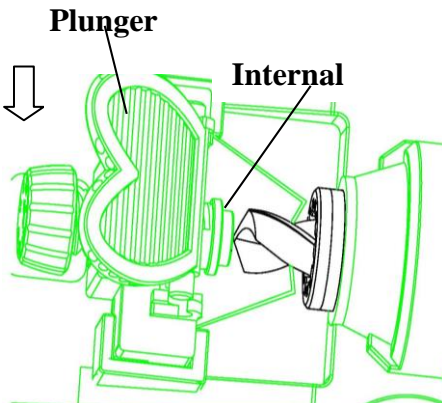
(Fig. 5)

2. Open the positioning claws by pushing down on the plunger (Fig.6)



(Fig.6)

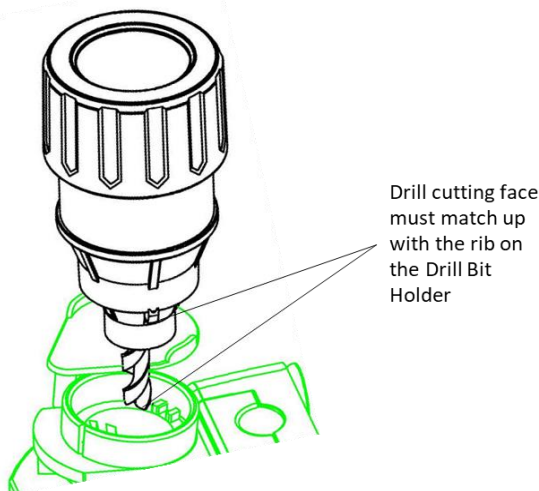
3. Insert the drill bit into the Drill Bit Holder. Ensure the drill bit tip is in contact with the Internal Positioning Pad. Pull up on the Plunger to close the Positioning Claws. Tighten the Drill Bit Holder enough to hold the bit in place but still allow the bit inserted inside to rotate. Rotate the drill bit inside the holder and ensure the claws meet the surface of the drill bit when the bit is rotated. Turn the Drill Bit Holder clockwise to lock the drill bit into place. (Fig.7).



(Fig. 7)

4. Push down on the Plunger to open the Positioning Claws and remove the Drill Bit Holder from the Guide. Ensure the drill bit is secured tightly in the Drill Bit Holder.
5. Turn the sharpener on and let it run for several seconds. Choose the appropriate Drill Bit Sharpener – Top Sharpener is (designed) intended for drill bits 10mm (3/8") or larger. The drill bit sharpener on the side of the tool is for bits smaller than 10mm (3/8"). Push the safety cover off to one side.
6. To use the drill bit sharpener for bits smaller than 3/8" (10mm). Push the safety cover to the side and then insert the drill bit (held securely in the Drill Bit Holder) into the sharpener opening. Ensure the "rib" on the Holder matches with the rib on the Guide. Oscillate the Drill Bit Holder in the sharpener, then remove the Drill Bit Holder (with bit inserted) and turn it 180°, then reinsert and oscillate to ensure symmetry while sharpening the bit.
7. To use the drill bit sharpener for bits larger than 3/8" (10mm) Insert the drill bit into the Drill Bit Holder, while ensuring the cutting face of the drill bit aligns with the positioning rib on the Drill Bit Holder. Ensure the drill bit is held securely in the Drill Bit Holder. Push the safety cover aside and insert the Drill Bit Holder (with drill bit inserted) into the sharpener opening. Ensure the "rib" on the Holder matches with the rib on the Guide. then remove the Drill Bit Holder (with bit inserted) and turn it 180°, reinsert (this is to ensure symmetry while sharpening the bit).

**IMPORTANT: If you are sharpening a bit 10mm (3/8") or larger, you must ensure the cutting face of the drill bit aligns with the positioning rib on the Drill Bit Holder (Fig. 8)**



(Fig. 8)

## GENERAL

**⚠ WARNING:** When servicing, use only identical replacement parts. Use of any other replacement parts may create a hazard or cause product damage.

DO NOT use solvents when cleaning plastic parts. Most plastics are susceptible to damage from various types of commercial solvents and may be damaged by their use. Use a clean cloth to remove dirt, dust, oil, grease etc.

**⚠ WARNING:** Do not at any time allow brake fluids, gasoline, petroleum-based products, penetrating oils, etc. to come in contact with plastic parts. They contain chemicals that can damage, weaken, or destroy plastic.

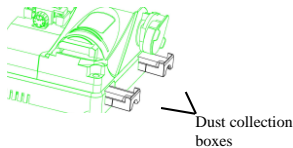
DO NOT abuse power tools. Abusive practices can damage the tool as well as the workpiece.

**⚠ WARNING:** DO NOT attempt to modify tools or create accessories not recommended. Any such alteration or modification is misuse and could result in a hazardous condition leading to possible serious injury. It will also void the warranty.

**⚠ WARNING:** Remove the plug from the socket before carrying out any adjustment, service, or maintenance

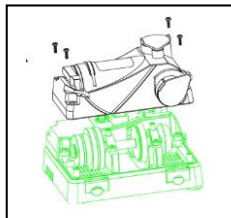
## Cleaning

1. Ensure dust collection boxes are emptied after each use.



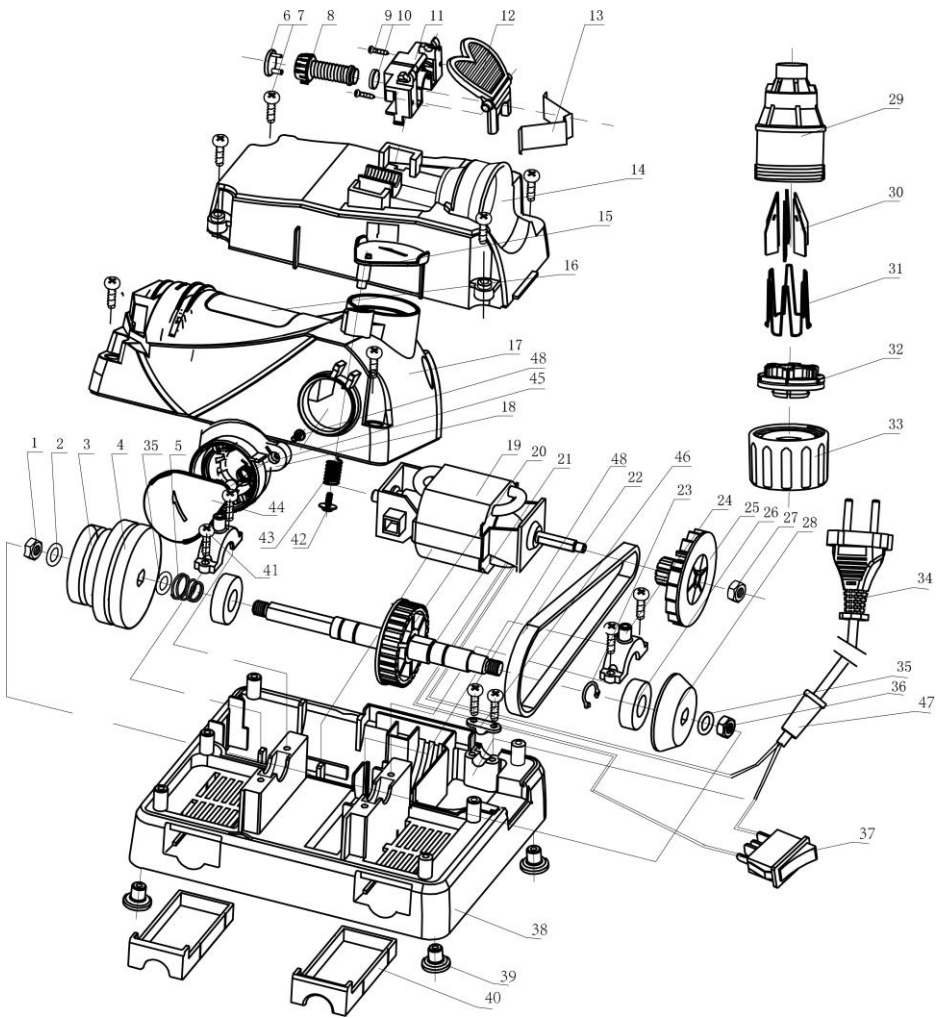
## Service

To change grind wheels, remove the screws from the tool as illustrated below.



**IMPORTANT- GRINDING WHEELS MUST BE REPLACED WITH IDENTICAL GRINDING WHEELS**

## EXPLODED VIEW





**PARTS LIST**

**⚠ WARNING** When servicing, use only original equipment replacement parts. The use of any other parts may create a safety hazard or cause damage to the tool. Any attempt to repair or replace electrical parts on this tool may create a safety hazard unless repairs are performed by a qualified technician. For more information, call the Toll-free Helpline, at 1-866-349-8665.

**Always order by PART NUMBER, not by key number.**

Key#	Part #	Part Name	Qty
1	1281-112-001	Self-locking nut	1
2	1281-112-002	Washer	1
3	1281-112-003	Knife grinder A	2
4	1281-112-004	Knife grinder B	2
5	1281-112-005	Rubber/metal washer	1
6	1281-112-006	Graduated knob	1
7	1281-112-007	Screw	6
8	1281-112-008	Screw	1
9	1281-112-009	Screw	2
10	1281-112-010	Block	1
11	1281-112-011	Drill seat	1
12	1281-112-012	Drill button	1
13	1281-112-013	Holding clamp	2
14	1281-112-014	Shell-A	1
15	1281-112-015	Cover /screw plate	1
16	1281-112-016	Nameplate	1
17	1281-112-017	Shell-B	1
18	1281-112-018	Grinding drilling seat	1
19	1281-112-019	Motor assembly	1
20	1281-112-020	Toothed driven wheel	1
21	1281-112-021	Double ended shaft	1
22	1281-112-022	Toothed belt	1
23	1281-112-023	Circlip	1
24	1281-112-024	Bearing clamps	2
25	1281-112-025	Motor pinion/cooling fan	1
26	1281-112-026	Axletree	2
27	1281-112-027	Motor fan hex nut	1
28	1281-112-028	Knife grinder-A	1
29	1281-112-029	Bit holder body	1
30	1281-112-001	Bit holding blades	6

Key#	Part #	Part Name	Qty
31	1281-112 -031	Blades formed wire carrier	6
32	1281-112 -032	Blades seat	1
33	1281-112 -033	Bit holder cap	1
34	1281-112 -034	Cord	1
35	1281-112 -035	Washer	2
36	1281-112 -036	Hex nut	1
37	1281-112 -037	Switch	1
38	1281-112 -038	Base	1
39	1281-112 -039	Dampening pad	4
40	1281-112 -040	Dust boxes	2
41	1281-112 -041	Screw	4
42	1281-112 -042	Screw	1
43	1281-112 -043	Knob with spring	1
44	1281-112 -044	Grinding seat cover	1
45	1281-112 -045	Drill grinding assembly	1
46	1281-112 -046	Cord fixing	1
47	1281-112 -047	Sleeve	1
48	1281-112 -048	Screw	3

***WARRANTY******RADLEY MULTI PURPOSE SHARPENER***

If this Radley Tool fails due to a defect in material or workmanship within three years from the date of purchase, return it to any Home Hardware store with the original bill of sale for exchange. Two years for battery and charger. This warranty does not include expendable parts including but not limited to blades, brushes, belts, and light bulbs. This warranty covers defects in material or workmanship only. It does not cover normal wear and tear, failure due to abuse/misuse, or defects caused by careless or accidental mishandling. If this Radley product is used for commercial or rental purposes, this warranty does not apply. For use at the consumer level. The warranty is not for industrial or commercial applications.

# Radley®

## **Multi-Purpose Sharpener** OWNER'S MANUAL



3 Year Limited Warranty on tool

# Radley®

**RADLEY TOOLS**  
ST. JACOBS, ONTARIO N0B 2N0  
© 2021 Home Hardware Store's  
Limited  
1-866-349-8665  
Customer Service/Tech Support

## 1282-201

Made in China

**3 Year  
warranty**

This Radley® product carries a three (3) year LIMITED warranty against defects in workmanship and materials. See Owner's Manual for full details.

**READ ALL INSTRUCTIONS BEFORE FIRST USE.  
KEEP THIS MANUAL FOR FUTURE REFERENCE.  
KEEP AWAY FROM CHILDREN.**



**WEAR CSA APPROVED  
EYE PROTECTION**



**WEAR EAR  
PROTECTION**



**WEAR FACE  
PROTECTION  
WEAR FACE**