

BENCHMARKTM MC

METAL SHEAR ATTACHMENT 1210-200



5 Year Limited Warranty

**READ ALL INSTRUCTIONS BEFORE FIRST USE.
KEEP THIS MANUAL FOR FUTURE REFERENCE.
KEEP AWAY FROM CHILDREN.**



**WEAR CSA APPROVED
EYE PROTECTION**



**WEAR EAR
PROTECTION**



**WEAR A FACE
MASK**

PRODUCT SPECIFICATIONS

METAL SHEAR ATTACHMENT	
Blade Material	SKD11 steel
Max Gauge	18GA
Shank Size	1/4" Hex
Materials to cut	Sheet metal, corrugated sheet metal, duct, asphalt shingle, steel mesh, vinyl siding, wire, plastics, cardboard, and rubber
Cutting capacity	1.2mm Mild Steel, 1.32mm Galvanized Steel
Metal Shear Attachment weight:	1.94Lb (0.88kg)

NEED ASSISTANCE?

Call us on our toll- free customer support line:
1-866-349-8665 (Monday through Friday 9am – 5pm
Eastern Standard Time)

- Technical questions
- Replacement parts
- Parts missing from package

GENERAL SAFETY WARNINGS

⚠ WARNING: READ AND UNDERSTAND THESE INSTRUCTIONS and the instructions for the power tool used with this product.

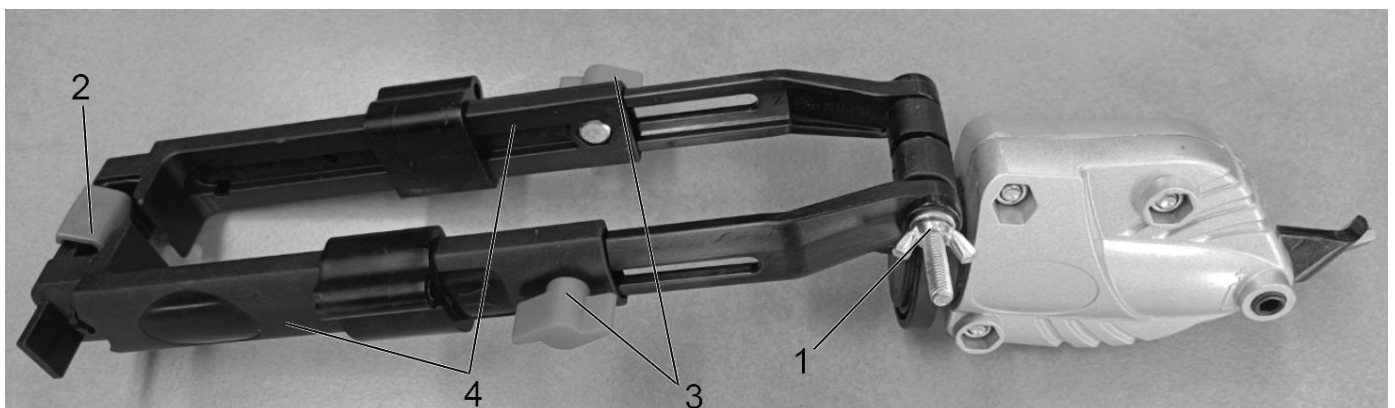
⚠ WARNING: FAILURE TO FOLLOW all instructions listed may result in electric shock, fire and/or serious personal injury.

⚠ WARNING: CUT HAZARD – Never have any part of your body near the blades or moving parts of the power tool. Serious personal injury may occur.

- Before use, ensure the shear attachment is properly attached to the tool.
- Turn the tool OFF and/or disconnect the battery pack before installing and removing accessories, before adjusting or when making repairs.
- To prevent inadvertent operation, lock the trigger switch in the OFF position when the tool is not in use or when storing the tool.
- DO NOT sharpen blades. DO NOT use the shear with any kind of accessory or attachment.
- Wear gloves when handling sheet metal. The edges are sharp and can cause serious personal injury.
- For best results, always clamp or anchor the material to be cut.
- DO NOT use under wet conditions or in the presence of flammable liquids or gases.
- DO NOT let children come into contact with the shear. Supervision is required when inexperienced operators use this tool.
- DO NOT hold the shear attachment as a primary gripping surface.
- Make sure the power tool is set to the “forward” (clockwise) direction before use.
- Hold the power tool on insulated gripping surfaces (if a drill use both hands). The shear contacting a live wire may make exposed metal parts of the shear and the power tool “live” and could give the operator an electric shock.
- AVOID body contact with earthed or grounded surfaces, such as pipes and appliances. There is an increased risk of electric shock if your body is earthed or grounded.
- DO NOT use solvents or other harsh chemicals for cleaning the non-metallic parts of the shear. These chemicals may weaken the plastic materials used in these parts. Use the cloth dampened only with water and mild soap.
- DO NOT let any liquid get inside the shear or immerse any part of the shear into a liquid.

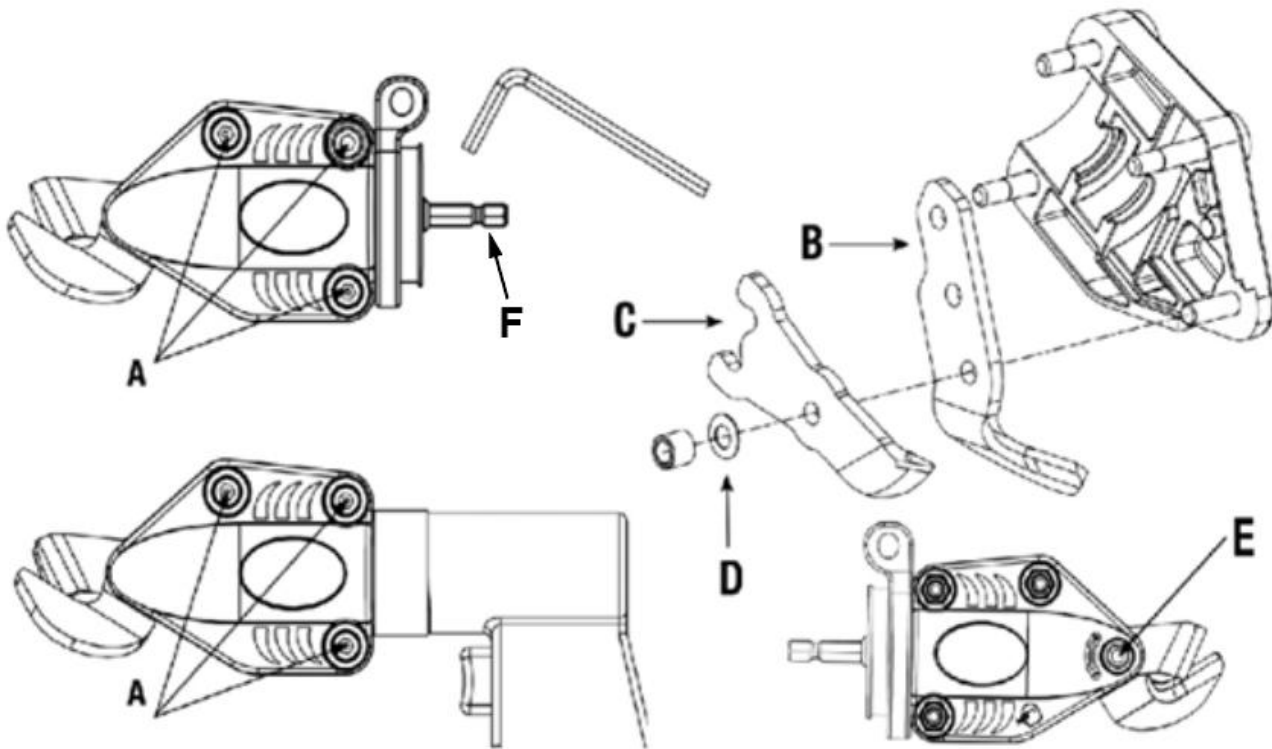
INSTALLING & OPERATING

1. Insert the shank end of the shears into the nose of the impact driver, or chuck, if using a drill. Tighten chuck securely.
2. Pivot telescoping clamp toward the back of tool and adjust the clamp (both width and length) to fit securely on the tool.
 - a. Adjust the width by turning the nut (1) located on the left side of the clamp. Rotate the nut clockwise/ counter-clockwise to reduce/increase the width.



- b. Rotate the knobs (3) on both sides to loosen the clamp. Then adjust the length of the clamp by pulling or pushing on the length adjusting lever (4) of the telescoping clamp.
 - c. Lock at the desired length/width by pushing the lock (2) located at the end of the telescoping clamp.
3. Ensure the shear is secure on the tool.

REPLACING BLADES

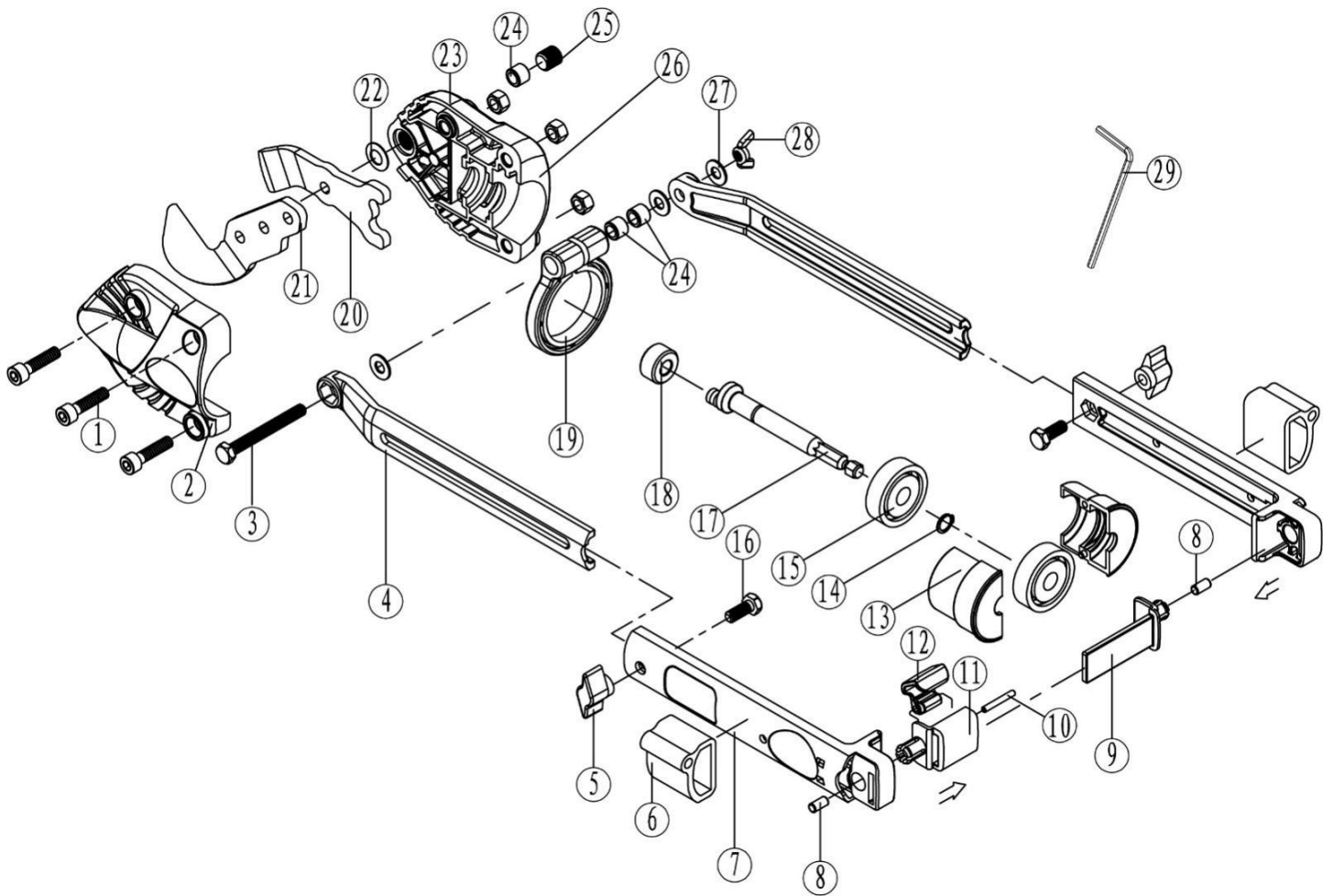


1. Use the 5mm hex key provided to remove the three hexagon screws (A) holding the casing together.
2. Separate the casings.

NOTE: There is grease in casing

3. Remove the blades. Be sure to keep the reusable washer (D).
 4. Place new lower blade (B) onto casing as shown in drawing above.
 5. Apply a thin layer of grease (not provided) on side of lower blade (B).
 6. Place new upper blade (C) into casing.
- NOTE: When replacing the washer (D), reinstall convex up and under upper blade (C)
7. Apply a liberal amount of grease (not supplied) to the space between the driveshaft (F) and upper blade (C).
 8. Reassemble casings and screws (E).
 9. Use the 5mm hex key provided to tighten the hexagon screws to ensure proper cutting performance.

EXPLODED VIEW



PARTS LIST

WARNING! When servicing, use only original equipment replacement parts. The use of any other parts may create a safety hazard or cause damage to the tool. Any attempt to repair or replace electrical parts on this tool may create a safety hazard unless repairs are performed by a qualified technician. For more information, call the Toll-free Helpline, at 1-866-349-8665.

Key#	Part #	Part Name	Qty
1	1210-200-001	Inner hexagon head screw	3
2	1210-200-002	Gear box cover	1
3	1210-200-003	hexagon head bolts	1
4	1210-200-004	Length adjusting lever	2
5	1210-200-005	Knob	2
6	1210-200-006	Hexagon wrench fixing sleeve	2
7	1210-200-007	Connecting link	2
8	1210-200-008	Rubber plug	2
9	1210-200-009	Locking bracket	1
10	1210-200-010	Parallel pins	1
11	1210-200-011	Width adjusting bracket	1
12	1210-200-012	Locking buckle	1
13	1210-200-013	Gear Box	2
14	1210-200-014	Check Ring	1
15	1210-200-015	Ball bearing	1
16	1210-200-016	hexagon head bolts	2
17	1210-200-017	Output shaft	1
18	1210-200-018	Trolley	1
19	1210-200-019	Hose clamps	1
20	1210-200-020	Movable blade	1
21	1210-200-021	Fixed blade	1
22	1210-200-022	Washer	1
23	1210-200-023	Gear box	1
24	1210-200-024	inner bushing	3
25	1210-200-025	Knob	1
26	1210-200-026	Prevailling torque type hexagon nut	3
27	1210-200-027	Washer	3
28	1210-200-028	Nut	1
29	1210-200-029	Hex key	1

WARRANTY

BENCHMARK METAL SHEAR ATTACHMENT

If this Benchmark tool fails due to a defect in material or workmanship within five years from the date of purchase, return it to any Home Hardware store with the original bill of sale for exchange. 3-year warranty for the battery and charger. This warranty does not include expendable parts including but not limited to blades, brushes, belts, light bulbs. This warranty covers defects in material or workmanship only. It does not cover normal wear and tear, failure due to abuse/misuse, or defects caused by careless or accidental mishandling. If this Benchmark product is used for commercial or rental purposes, this warranty does not apply.

METAL SHEAR ATTACHMENT



BENCHMARK™

BENCHMARK TOOLS CANADA

ST. JACOBS, ONTARIO N0B 2N0

© 2022 Home Hardware Stores Limited

CUSTOMER SERVICE/TECH SUPPORT

1-866-349-8665

1210-200

Made in China



* This Benchmark™ product carries a five (5) year LIMITED warranty against defects in workmanship and materials. The charger and batteries carry a three (3) year LIMITED warranty.

**READ ALL INSTRUCTIONS BEFORE FIRST USE.
KEEP THIS MANUAL FOR FUTURE REFERENCE.
KEEP AWAY FROM CHILDREN.**



**WEAR CSA APPROVED
EYE PROTECTION**



**WEAR EAR
PROTECTION**



**WEAR A
FACE
MASK**