

# BENCHMARK<sup>TM</sup><sub>MC</sub>

## WELDING CART



5 year limited warranty on tool



**READ ALL INSTRUCTIONS BEFORE FIRST USE.  
KEEP THIS MANUAL FOR FUTURE REFERENCE.  
KEEP AWAY FROM CHILDREN.**



**WEAR CSA APPROVED  
EYE PROTECTION**



**WEAR EAR  
PROTECTION**



**WEAR A  
FACE MASK**

## PRODUCT SPECIFICATIONS

BENCHMARK WELDING CART	
CART CAPACITY	100 Lb (45.3 Kg)
Caster Size	2-1/2" (6.4cm)
Fixed Rear Wheel Size	6" (15.2cm)
Cart Size	28" (71cm) Long x 16.5" (42cm) Wide x 29.1" (74 cm) High
Tool Weight	24.9Lb (11.3Kg)

### NEED ASSISTANCE?

Call us on our toll-free customer support line:  
1-866-349-8665 (Monday through Friday 9am – 5pm Eastern Standard Time)

- Technical questions
- Replacement parts
- Parts missing from package

Thank you for purchasing this Welding Cart, specifically designed for use with MIG welders, to provide a more compact unit and improve mobility in and around the workshop.

Please read the following instructions carefully and ensure that anyone using this unit is fully aware of the precautions to be taken when it is put to use.

**NOTE: 10mm wrench is required to assemble this cart.**

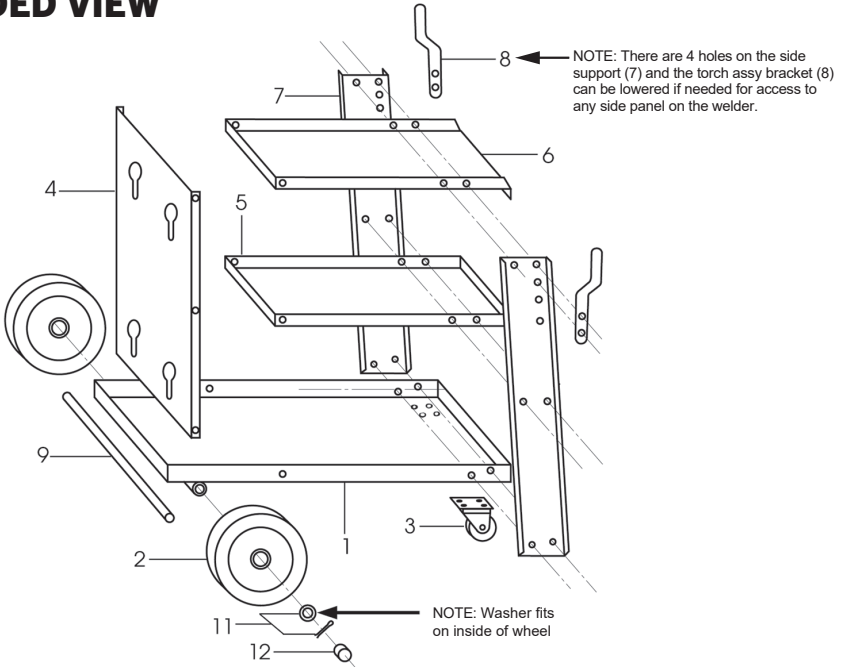
### SAFETY PRECAUTIONS

- The cart will adequately carry all standard hoses, tools and wire spools etc., but take care NOT to overload it. BEWARE: Large gas bottles could cause instability.
- Tighten the cylinder chains as tightly as possible to prevent the cylinders from moving during transit.
- NEVER attach the welders earth lead to the cart, a proper earth is vital to the welding process.
- Use the cart on flat, smooth surfaces only.
- DO NOT position cart on sloped surfaces.
- NEVER pull cart by the welder leads.

**ASSEMBLY**

1. Slide the axle through the housing in the bottom tray, and slide on to each end, a flat washer, followed by a wheel and finally secure using the split pin provided.
2. Fit the casters to the bottom tray using four nuts, bolts and washers provided.
3. Fit the side supports to the bottom tray (1) in the manner shown in the illustration.
4. Fit the middle (5) and top (6) trays to the side support, loosely, then attach the front panel. Before tightening the nuts, shake the structure to ensure that no part is under stress, then, ensuring the structure is square, tighten all nuts, except the top righthand nuts of the side supports. Remove these and attach the Torch Assembly Brackets, then replace the nuts and tighten securely.
5. The gas bottle sits in tray (1), supported by the front panel and secured by chains, entered in the slotted holes in the front panel.
6. Rest the welder on the top shelf, ensuring the feet are attached before doing so.

## EXPLODED VIEW



**PARTS LIST**

Key #	Part #	Part Name	Quantity
1	1150-004-001	BOTTOM TRAY	1
2	1150-004-002	WHEEL	2
3	1150-004-003	CASTER	2
4	1150-004-004	FRONT PANEL	1
5	1150-004-005	MIDDLE TRAY	1
6	1150-004-006	TOP TRAY	1
7	1150-004-007	SIDE SUPPORT	2
8	1150-004-008	TORCH ASSEMBLY BRACKET	2
9	1150-004-009	AXLE	1
-	-	NUTS BOLTS AND WASHERS	1
11	1150-004-011	FLAT WASHER AND SPLIT PIN	2
12	1150-004-012	PLASTIC CAP	2

# WELDING CART



5 year limited warranty on tool

**BENCHMARK**<sup>TM</sup><sub>MC</sub>

**BENCHMARK TOOLS CANADA**

ST. JACOBS, ONTARIO N0B 2N0

© 03/2021 Home Hardware Stores Limited

**CUSTOMER SERVICE/TECH SUPPORT**

1-866-349-8665

**1150-004**

Made in China



\* This Benchmark<sup>TM</sup> product carries a five (5) year LIMITED warranty against defects in workmanship and materials. The charger and batteries carry a three (3) year LIMITED warranty. See Owner's Manual for full details.

**READ ALL INSTRUCTIONS BEFORE FIRST USE.  
KEEP THIS MANUAL FOR FUTURE REFERENCE.  
KEEP AWAY FROM CHILDREN.**



**WEAR CSA APPROVED  
EYE PROTECTION**



**WEAR EAR  
PROTECTION**



**WEAR A  
FACE MASK**