

BENCHMARKTM MC

3 x 360° CROSS LINE LASER LEVEL



5 Year Limited Warranty on tool

IC
AK360G

**READ ALL INSTRUCTIONS BEFORE FIRST USE.
KEEP THIS MANUAL FOR FUTURE REFERENCE.
KEEP AWAY FROM CHILDREN.**



**WEAR CSA APPROVED
EYE PROTECTION**



**WEAR EAR
PROTECTION**



**WEAR A
FACE MASK**

PRODUCT SPECIFICATIONS

360 CROSS LINE LASER LEVEL	
Laser class	class 2 (IEC/EN60825-1/2014), <1mW
Laser wavelength	520nm±10nm
Leveling accuracy	±1/8" at 33Ft (± 3mm at 10M)
Leveling Compensation Range	±4°
Working Distance	100ft/30m
Power	3.7V 5200 mAh Li-ion battery (with TYPE-C interface)
Working Time	7h
IP rating	IP54
Operation Temperature range	-10°C ~ +50°C
Storage Temperature range	-20°C ~ +70°C
Weight	4.6Lb (2.1KG)

NEED ASSISTANCE?

Call us on our toll-free customer support line:
1-866-349-8665 (Monday through Friday 9am – 5pm Eastern Standard Time)

- Technical questions
- Replacement parts
- Parts missing from package

TABLE OF CONTENTS

Product Specifications 1
Table of Contents 2
Safety Instructions 3-4
Battery & charger Safety 5
Battery pack recycling 5
Symbols 6
Know Your 3 x 360° CROSS LINE LASER LEVEL 6
Operation 7-10
Maintenance 10-11
Exploded View 11
Parts List 12
Warranty..... 12

SAFETY INSTRUCTIONS

⚠ WARNING! Read and understand all instructions before using this tool. The operator must follow basic precautions to reduce the risk of personal injury and/or damage to the equipment.

⚠ WARNING: Laser Radiation Exposure. Do not disassemble or modify the laser level. There are no user serviceable parts inside. Serious eye injury or blindness could result.

⚠ WARNING: Hazardous Radiation. Use of controls or adjustments, or performance of procedures, other than those specified herein may result in hazardous radiation exposure.

- Do not operate the laser in explosive atmospheres, such as in the presence of flammable liquids, gases, or dust. This tool may create sparks which may ignite the dust or fumes.
- Store an idle laser out of reach of children and other untrained persons. Lasers are dangerous in the hands of untrained users.
- Tool service **MUST** be performed by qualified repair personnel. Service or maintenance performed by unqualified personnel may result in injury.
- Do not use optical tools such as a telescope or transit to view the laser beam. Serious eye injury could result.
- Do not place the laser in a position which may cause anyone to intentionally or unintentionally stare into the laser beam. Serious eye injury could result.
- Do not position the laser near a reflective surface which may reflect the laser beam toward anyone's eyes. Serious eye injury could result.
- Turn the laser off when it is not in use. Leaving the laser on increases the risk of staring into the laser beam.
- Do not modify the laser in any way. Modifying the tool may result in hazardous laser radiation exposure.
- Do not operate the laser around children or allow children to operate the laser. Serious eye injury may result.
- Do not remove or deface warning labels. If labels are removed, the user or others may inadvertently expose themselves to radiation.
- Position the laser securely on a level surface. If the laser falls, damage to the laser or serious injury could result.

PERSONAL SAFETY

- Stay alert, watch what you are doing, and use common sense when operating the laser. Do not use the laser when you are tired or under the influence of drugs, alcohol, or medication. A moment of inattention while operating the laser may result in serious personal injury.
- This tool contains a Class 2 laser product that emits laser light. An exposure to the beam of a Class 2 laser is considered safe for a maximum of 2 seconds. Eyelid reflexes will normally provide adequate protection.

- Use personal protective equipment. Always wear eye protection. Depending on the work conditions, wearing protective equipment such as a dust mask, non-skid safety shoes, hard hat, and hearing protection will reduce personal injury.
- Set the room's light levels as bright as possible to keep the eye's pupil small, The pupil will grow larger in dim light and it is easier for direct or reflected laser light to damage the retina.

⚠ WARNING: Keep the tool and any accessories such as a magnetic holder, positioning device, laser receiver or laser target plate away from cardiac pacemakers. The magnets of the tool and laser target plates etc. generate a field that can impair the function of cardiac pacemakers. Keep the tool and any accessories such as a magnetic holder, positioning device laser receiver or laser target plate away from magnetic data medium and magnetically-sensitive equipment. The effect of the magnets of the tool and laser target plate can lead to irreversible data loss.

TOOL USE AND CARE

- Do not use the laser if the Power/Transport Lock switch does not turn the laser on or off. Any tool that cannot be controlled with the switch is dangerous and must be repaired.
- Follow instructions in the Maintenance section of this manual. Use of unauthorized parts or failure to follow Maintenance instructions may create a risk of electric shock or injury.

⚠ CAUTION: To avoid damage to the unit, please protect from the following situations:

1. EMF (electro-magnetic fields) from arc welders, induction heaters
2. Thermal shock (caused by large or abrupt ambient temperature changes- allow 30 minutes for the unit to stabilize before use.
3. Do not leave the unit on or near objects of high temperature.

USER GUIDE, MAINTENANCE AND CARE

When not in use please turn OFF the tool and place the pendulum lock in the locked position to avoid damage to the lasers.

1. The laser tool is sealed and calibrated at the plant to the accuracy specified.
2. It's recommended to carry out an accuracy check before its first use and periodic checks during future use, especially for precise layouts
3. Do not touch the laser beam outlet (glass window) , this could result in fingerprints on the outlet/window which may affect the performance of the laser.
4. Do not store the laser tool in direct sunlight or expose it to high temperatures. The housing and some internal parts are made of plastics and may become deformed at high temperatures.
5. Exterior plastic parts may be cleaned with a damp cloth, NEVER use solvents. Use a soft, dry cloth to remove moisture from the tool before storage.
6. Store the tool in its case when not in use. If storing for an extended time, remove batteries before storage to prevent possible damage.
7. Do not dispose of this product with household waste.
8. Always dispose of batteries per local code.
9. Please recycle in line with local provisions for the collection and disposal of electrical and electronic waste under the WEEE Directive.

BATTERY & CHARGER SAFETY

⚠ WARNING: Only use the charger supplied with this kit to charge the 3.7V Li-ion battery for this tool. Charging any other batteries may damage the charger and possibly cause serious injury.

Do not store or carry the battery in a manner in which metal objects could contact the exposed metal end. Do not place the battery in aprons, pockets, drawers, etc. with loose nails, screws, keys etc. The battery could short circuit causing a fire, personal injury, or damage to the battery.

⚠ WARNING: Batteries can explode, or leak, and can cause injury or fire. To reduce this risk:

- Carefully follow all instructions and warnings on the battery label and package.
- Do not short battery terminals.
- Do not charge disposable batteries.
- Do not dispose of batteries in fire.
- Keep battery out of reach of children.
- Remove battery when the device is not in use.

Use the charger only in a standard 120V, 60 Hz electrical outlet.

Do not use the charger in wet or damp conditions. It is intended for indoor use only.

Do not use the charger near sinks or tubs. Do not immerse the charger in water.

Do not allow the cord to hang over the edge of a table or counter or touch hot surfaces.

The charger should be placed away from sinks and hot surfaces.

Do not use the charger to charge any batteries other than the cordless drill batteries. Other batteries may explode.

Do not allow the cord to hang over the edge of a table or counter or touch hot surfaces. The charger should be placed away from sinks and hot surfaces.

Do not operate charger if the cord or plug is damaged. Replace the damaged cord and plug immediately.

Do not operate the charger if it has received a sharp blow, been dropped or otherwise damaged in any way. Have a qualified technician examine the charger and repair it if necessary. Do not disassemble the charger.

Do NOT charge the batteries when the work area or the battery temperature is at or below 5° C (41° F) or above 40.5° C (105° F).

Unplug the charger when not in use and before cleaning or maintenance.







BATTERY PACK RECYCLING



To preserve our natural resources, please recycle or dispose of batteries properly. The batteries charged by this charger may contain chemicals and metals that are harmful to the environment. Never dispose of rechargeable batteries in your normal household garbage or in landfill sites as they will add to the pollution of the environment.

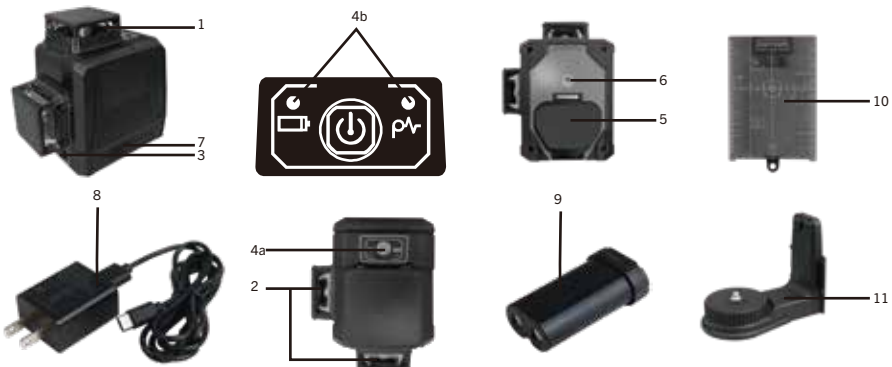
SYMBOLS

The rating plate on your tool may show symbols. These represent important information about the product or instructions on its use.

	Direct current, DC		Waste electrical products should not be disposed of with household waste. Please recycle where facilities exist. Check with your Local Authority or retailer for recycling advice.
	Refer to instruction manual/ booklet		
	General warning		Regulator compliance mark

KNOW YOUR 3 x 360° CROSS LINE LASER LEVEL

1. LASER BEAM OUTLET FOR 360° HORIZONTAL PLANE BEAM
2. LASER BEAM OUTLET FOR VERTICAL PLANE BEAM
3. PENDULUM/TRANSIT LOCK SWITCH
- 4a. KEYPAD
- 4b. KEYPAD OPERATION; LED INDICATOR (LEFT=CHARGING), LED INDICATOR (RIGHT=PULSE MODE).
5. BATTERY COMPARTMENT COVER
6. 1/4"-20 THREADED MOUNT
7. USB (C) PORT
8. CHARGER AND USB CABLE
9. BATTERY
10. LASER TARGET
11. HOLDER



OPERATION

NOTE: This tool can be used either plugged in with the USB cord (included) or "cordless" with the battery (included), inserted into the tool.

INSTALLING THE BATTERY

Open the Battery compartment cover (5) and insert the battery. Close the battery compartment cover.

NOTE: The battery is "keyed" and will only correctly fit into the level one way. If the battery is not going into the tool, DO NOT force, Turn the battery and attempt to insert again.

CHARGING THE BATTERY

NOTE: The tool will automatically turn OFF when the battery is depleted, indicating it is necessary to charge the battery. The battery can be charged in two ways:

1. WITH BATTERY REMOVED FROM LEVEL

- A. Insert the larger end of the USB cable into the charger.
- B. Insert the smaller end of the USB cable into the port on the battery.
- C. Plug the charger into a power outlet.

The red light on the battery will flash red to indicate the battery is charging. Once the battery is fully charged (A completely depleted battery will take approximately 5hrs.) the red light will go out, and a solid green light will come on.

2. WITH BATTERY INSTALLED IN LEVEL

- A. Insert the larger end of the USB cable into the charger.
- B. Insert the smaller end of the USB cable into the USB C port on the laser level (8).
- C. The green light on the top left of the keypad will flash green when the unit is charging.
- D. Once the battery is fully charged (up to 5 hrs for a fully drained battery) the green light will remain solid.

USING THE TOOL WITH THE USB CABLE

Insert the smaller end of the USB cable into the USB (C) port (8) located on the tool. Insert the larger end of the USB cable into the charger and then plug into a power outlet.

OPERATING THE CROSS LINE LASER LEVEL MANUAL OR TILT MODE

1. Move the Pendulum/Transit Lock switch (3) to the "locked" position to display all lasers in manual mode.
2. Push and hold the green button on the Keypad (4a) until the lasers turn on.

NOTE: The lasers will blink every 5 seconds to remind the user that the level is in manual mode and is NOT self-leveling.

3. Press the green button again to cycle through the available laser modes as follows;

- a) 1 horizontal laser plane and 2 vertical laser planes (default status)
- b) 1 horizontal laser plane
- c) 1 vertical laser plane
- d) 1 horizontal laser plane and 1 vertical laser plane
- e) 2 vertical laser planes

NOTE: Laser beams projected in manual mode cannot be used as a "level" horizontal or "level" vertical references in nature. If you require true level then switch to **SELF LEVELING MODE**.

TURNING THE LASER LEVEL OFF IN MANUAL OR TILT MODE

Press and hold the green button on the the keypad (4a) until the laser turns OFF.

SELF LEVELING MODE

1) Move the Pendulum/Transit Lock switch (3) to the "unlocked" position to unlock the pendulum and display all lasers in self-leveling mode.

NOTE: IF THE LASER BEAM FLASHES CONTINUOUSLY, THE LASERS ARE NOT LEVEL (OR PLUMB) AND SHOULD NOT BE USED FOR DETERMINING OR MARKING LEVEL OR PLUMB. TRY REPOSITIONING THE LASER ON A LEVEL SURFACE UNTIL THE LASERS STOP FLASHING.

2. Press the green button to cycle through the available laser modes as follows;

- a) 1 horizontal laser plane and 2 vertical laser planes (default status)
- b) 1 horizontal laser plane
- c) 1 vertical laser plane
- d) 1 horizontal laser plane and 1 vertical laser plane
- e) 2 vertical laser planes

TURNING THE LASER LEVEL OFF IN SELF LEVELING MODE:

Move the Pendulum/Transit Lock switch (3) to the "locked" position.

OPERATING TIPS

- Always mark the center of the beam (dot) created by the laser.
- Extreme temperature changes may cause movement of internal parts that can affect accuracy. Check your accuracy often while working.
- If the laser is ever dropped, check to make sure it is still calibrated.

PULSE MODE

Pulse Mode is activated by pressing and holding down the green button on the keypad (4a) when the Pendulum/Transit lock switch (3) is in the "unlocked" position. Release the button on the keypad and the blue light on the top right corner of the keypad (4b) will illuminate, indicating the level is in pulse mode. Repeat to turn pulse mode off. Use Pulse Mode with a laser receiver (not included and must be purchased separately).

NOTE: Using the level in Pulse Mode in conjunction with a laser receiver (not included/purchase separately), will allow for greater visibility outside and extends the working range of the lasers.

LASER TARGET

The laser target enhances the brightness of the laser line or point for easier visibility outdoors, as laser beams are generally not visible in daylight. Use the stand on back to keep the target steady, or attached the target's magnetic base to metal for hands free use.

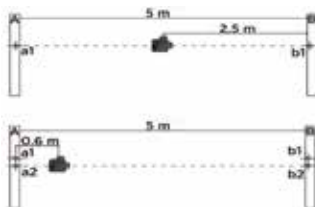
USING THE LASER TARGET

- Aim the laser level where the reading is required.
- Place the laser target where the lasers are projected.
- Either use the magnet on the laser target or, open the stand on the back, and place on a flat surface at the same height as the laser level.
- Slowly move the laser target until it catches the laser beam from the level. Upon finding the beam, steady the target into position.

CHECKING THE ACCURACY OF THE LEVEL'S CALIBRATION

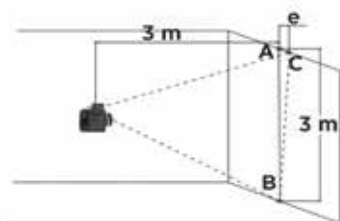
Checking horizontal laser line accuracy

1. Find two walls at a distance of 16.4ft (5meters).
- 2 Put the laser on a level surface and place it in the middle (8.2ft / 2.5 meters) between the two walls.
3. Slide the lock switch to "UNLOCK" position.
4. Turn on the horizontal line and then point the laser cross to the point marked as a1 on wall A. Mark this position.
5. Turn the laser 180 degrees and point the laser cross to the point marked b1 on wall B. Mark this position.
6. Move the tripod so the laser is 2ft / 60cm from wall A. Lower the tripod by about 0.79~1.2in / 2-3cm and then point the laser cross to point a2 and b2 and mark the position.
7. Measure the difference in height between a1 and a2 (a1-a2). Do the same for b1 and b2 (b1-b2). If the difference between the two results (a1-a2) - (b1-b2) is more than 0.1in / 2.5mm, the accuracy is out of tolerance and the unit needs to be calibrated.



Checking vertical laser line accuracy

1. Find a wall that is 3 m tall and place the laser 3 m away from the wall.
2. Slide the lock switch to “UNLOCK” position.
3. Turn on the vertical line and mark point A on the wall. Please note that the distance from point A to the ground should be 3 m.
4. Hang a plumb line from point A to the ground and mark the plumb point B on the ground.
5. Turn on the laser to make the vertical laser line to meet at point B on the ground.
6. Follow the laser line from the ground and mark point C on the wall. Please note that the distance from point C to the ground should be 3 m. Measure the distance from point A to point C; it is called “e”. If “e” exceeds 0.08in / 2 mm, the accuracy is out of tolerance and the unit needs to be calibrated.



MAINTENANCE

⚠ WARNING: When servicing, use only identical replacement parts. The use of any other part may create a hazard or cause product damage.

DO NOT use solvents when cleaning plastic parts. Plastics are susceptible to damage from various types of commercial solvents and may be damaged by their use. Use a clean cloth to remove dirt, dust, oil, grease, etc.

⚠ WARNING: Do not allow brake fluids, gasoline, petroleum-based products, penetrating oils, etc. to come into contact with plastic parts. They contain chemicals that can damage, weaken or destroy plastic.

DO NOT abuse power tools. Abusive practices can damage the tool and the workpiece.

⚠ WARNING: DO NOT attempt to modify tools or create accessories. Any such alteration or modification is misuse and could result in a hazardous condition leading to possible serious injury. It will also void the warranty.

LUBRICATION

All of the bearings in this tool are lubricated with a sufficient amount of high-grade lubricant for the life of the unit under normal conditions. Therefore, no further lubrication is required.

BATTERY PACK REMOVAL AND PREPARATION FOR RECYCLING

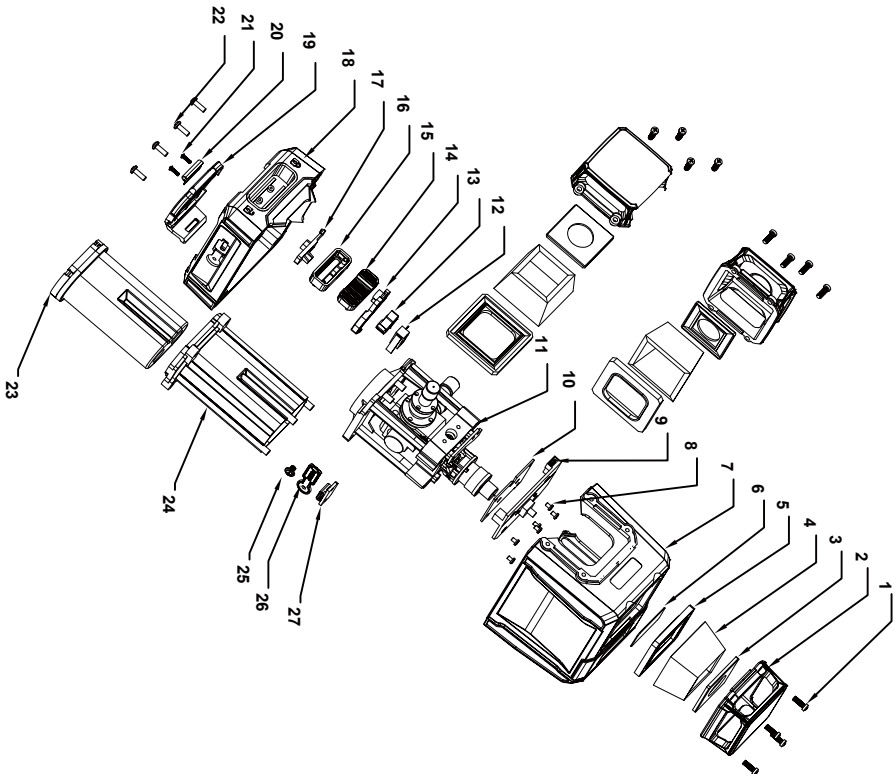
To preserve our natural resources, please recycle or dispose of batteries properly.

The batteries accompanying this tool may contain chemicals and metals that are harmful to the environment. Never dispose of rechargeable batteries in your normal household garbage or in landfill sites, because they will add to the pollution of the environment.

Consult your local waste authority for information regarding available recycling and disposal options.

⚠ WARNING: Upon removal of the battery pack, cover the terminals of the battery pack with electrical tape or heavy-duty tape. Never touch both terminals with metal objects or parts, because a short circuit may result. Keep away from children. Do not attempt to destroy or disassemble battery pack or remove any of its components. Rechargeable batteries must be recycled or disposed of properly.

EXPLODED VIEW



PARTS LIST

Always order by part number.

KEY #	PART #	PART NAME / QUANTITY	KEY #	PART #	PART NAME / QUANTITY
1	301110002	Phillips pan head self-tapping screws / 20	16	302090019	Slide switch / 1
2	302010276	Window cover / 3	17	302050023	Locking push piece / 1
3	305070022	Window glass upper pad / 3	18	302060180	Bottom cover / 1
4	304120049	Window glasse / 3	19	302180010	Battery cover / 1
5	305070021	Window glass lower pad / 3	20	301050002	Battery cover pressing piece / 1
6	403010071	Key pad / 1	21	301110034	Phillips flat head tapping screws / 2
7	302010248	Top cover / 1	22	301110007	Phillips pan head tapping screws / 4
8	301110048	Phillips flat head tapping screws / 6	23	303140013	Lithium battery / 1
9	303050177	Main board / 1	24	302040038	Lithium battery compartment / 2
10	301060028	Battery board / 1	25	301110062	Cross-head with screws / 1
11	201020044	Laser module core / 1	26	305070009	Type-C plug / 1
12	303090001	Micro switch / 1	27	303050086	Type-C board / 1
13	302050001	Locking clamp angle A / 1			
14	302050002	Locking clamp angle B / 1			
15	302010114	Slide switch Cover / 1			

WARRANTY

BENCHMARK WARRANTY FOR 3 x 360° CROSS LINE LASER LEVEL

If this Benchmark tool fails due to a defect in material or workmanship within five years from the date of purchase, return it to any Home Hardware store with the original bill of sale for exchange. Three year warranty for the battery and charger. This warranty does not include expendable parts including but not limited to blades, brushes, belts, light bulbs.

This warranty covers defects in material or workmanship only. It does not cover normal wear and tear, failure due to abuse/misuse, or defects caused by careless or accidental mishandling. If this Benchmark product is used for commercial or rental purposes, this warranty does not apply.

3 x 360° CROSS LINE LASER LEVEL



5 Year Limited Warranty on tool

BENCHMARK™
MC

BENCHMARK TOOLS CANADA
ST. JACOBS, ONTARIO N0B 2N0
© 2022 Home Hardware Stores Limited

CUSTOMER SERVICE/TECH SUPPORT
1-866-349-8665

1082-002

Made in China



* This Benchmark™ product carries a five (5) year LIMITED warranty against defects in workmanship and materials. The charger and batteries carry a three (3) year LIMITED warranty. See Owner's Manual for full details.

IC
AK360G

**READ ALL INSTRUCTIONS BEFORE FIRST USE.
KEEP THIS MANUAL FOR FUTURE REFERENCE.
KEEP AWAY FROM CHILDREN.**



**WEAR CSA APPROVED
EYE PROTECTION**



**WEAR EAR
PROTECTION**



**WEAR A
FACE MASK**