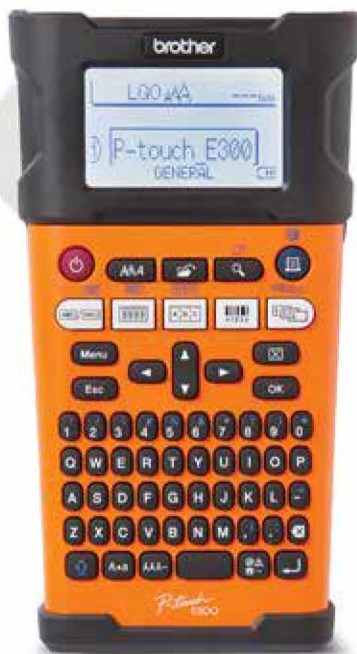


P-TOUCH industrial labellers

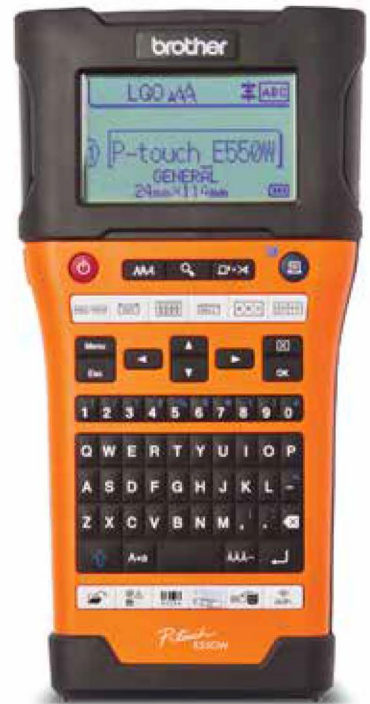
Power for industry pros



PT-E300VP

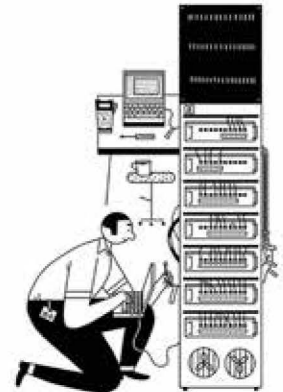


PT-E500VP



PT-E550WVP

Ideal for:
data communication
Electrical
Security
Audiovisual



brother
at your side

P-touch industrial labellers

Power for industry pros

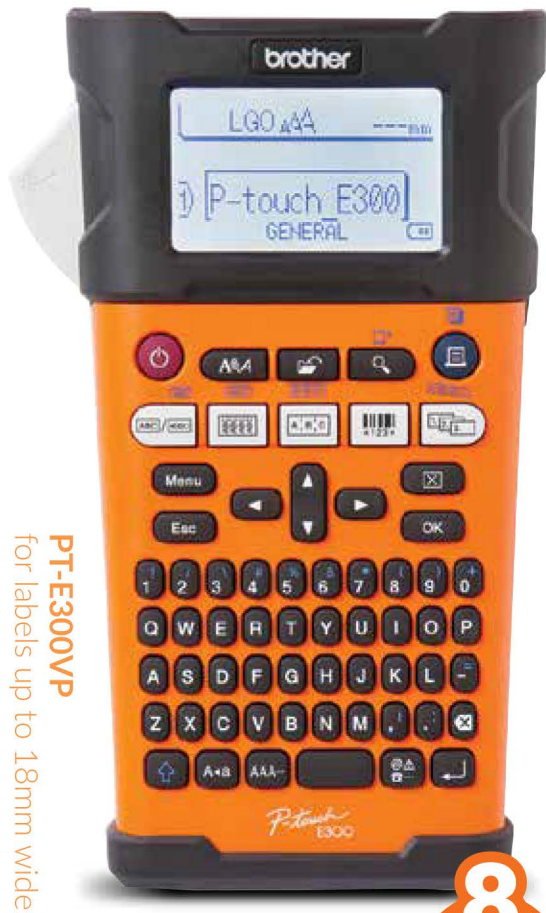
PT-E300VP

Advanced Industrial Handheld Labelling Tool

Create laminated labels and heat shrink tubes up to 18mm quickly and easily

- Creates rugged, industrial labelling on laminated labels and heat shrink tubes up to 18mm wide
- Backlit graphical display allows users to easily create labels in dark or dimly-lit environments
- Easily mark wires, cables, faceplates, outlet covers and more with professional labelling features
- Built-in and intuitive label application keys simplify label creation
- Large QWERTY keyboard makes data entry as easy as texting
- Over 160 built-in industrial symbols and 9 barcode symbologies

- Faceplate
- Cable wrap
- Cable flag
- Patch panel
- Punch block
- Barcode
- Serialize
- Advanced serialize



PT-E300VP
for labels up to 18mm wide



When we set out to design a truly professional industrial labeller, we went straight to the industry pros who label for a living.

We learned all about the challenges of labelling on the job—from confined spaces and heights, to construction sites, extreme weather conditions, and more. Combining this knowledge with our reputation for quality and innovation, we created durable, easy-to-carry, reliable industrial labellers packed with powerful, professional features.

With clearly identified application keys and shortcuts, intuitive menus, and on-screen prompts, Brother's P-touch industrial labellers are so easy to use that you can get going in seconds. Labelling becomes as simple as print, cut, peel and apply. All without ever having to open a manual.

PT-E500VP

PC-connectable Industrial Handheld Labelling Tool

Labels up to 24mm wide, PC connectivity and auto cutter for higher productivity and efficiency

All the features of the PT-E300VP plus:

- PC connectivity, an auto cutter, and the ability to produce durable, laminated labels and heat shrink tubes up to 24mm wide make it ideal for more complex projects like data centres
- Built-in preformatted and custom designed label templates for fast and easy label creation
- Download up to 6MB worth of files, such as databases, directly from a PC or Mac, saving time, minimizing keystrokes and human error
- Create label designs from a PC or Mac with included software and print while connected, or load the designs into the labelling tool and print on the go.

- Faceplate
- Cable wrap
- Cable flag
- Patch panel
- Punch block
- Saved templates
- Barcode
- Serialize
- Advanced serialize
- Database printing

PT-E500VP
for labels up to 24mm wide



10
HOT
KEYS

Easy and affordable labelling with professional results: a win-win proposition. And much is thanks to our industry-leading tape technology that's second to none. We're talking tapes that are easy-to-apply, resilient, long-lasting and come in an impressive range of formats, colours, sizes and adhesives types...all at an unrivaled cost of ownership.

P-touch industrial labellers – easy-to-use professional tools for industry pros.



PT-E550WVP

Wireless Industrial Handheld Labelling Tool

Labels up to 24mm wide, wireless connectivity and auto label strip cutter for versatility and work flow integration

All the features of the PT-E500VP plus:

- **Wireless connectivity** for even greater flexibility and efficiency, making it ideal for handling complex IT projects.
 - **Transfer files and print directly** from popular Windows®, IOS® and Android™ mobile devices, minimizing keystrokes and reducing input errors.
 - **Handle changes to projects on the job site, in real time!** Updated databases can be sent directly to your smartphone or tablet and transferred right to the PT-E550WVP, so you can continue your work where you left off.
 - **Wi-Fi Direct** so you can connect your smartphone/tablet to your PT-E550WVP, no matter the infrastructure.
- **Automatic dual-blade cutter** - create labels in easy-peel strips. Serialized or repetitive labels stay in order, saving time, increasing productivity, and reducing waste.
- **Print individual and strips of laminated labels on the jobsite**
No more sorting through clumsy preprinted label sheets.

- Faceplate
- Cable wrap
- Cable flag
- Patch panel
- Punch block
- Wi-Fi
- Saved templates
- Barcode
- Serialize
- Advanced serialize
- Database printing



PT-E550WVP
for labels up to 24mm wide



brother
at your side

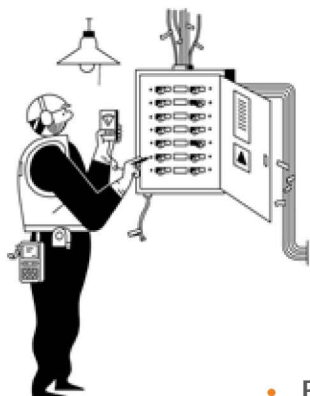
Make your mark easily with P-Touch industrial labellers

Brother's P-touch handheld industrial labellers are packed with professional features, making onsite labelling easier, faster and more efficient.

- **Label application keys** for preformatted templates of the labels you need most often. Pick an application, follow the on-screen prompts, enter your text, print and cut. There's no guesswork.
- **Store common labels** in memory for quick recall.
- **Auto tape sensing** so your labeller always knows what tape size is loaded.
- **Auto type sizing** automatically adjusts your type size to fit the tape.
- **Graphical LCD display** to preview your label before you print.
- **Vertical and rotated printing** for added flexibility.
- **Repeat printing** for multiple copies.
- **Automatic serialization** to minimize keystrokes and repetitive tasks.
- **Built-in datacom and industrial symbols** for customized labels.
- **Built-in tape cutter** for labels with crisp, clean cuts.
- **Easy-swap drop-in tape cassettes** let you change label colour, size and adhesive type in seconds.
- **Impressive range of tapes** for virtually every application.
- **Handheld design** for ease of use on the jobsite.
- **Complies with industry standards and best practices** such as ANSI/EIA/TIA-606-A/B.
- **P-touch industrial labellers boast an unparalleled cost of ownership** - all models come as a bundled kit at a price lower than the cost of a competitive labeller alone. You get:
 - Hard shell, protective carrying case
 - AC adapter
 - Li-ion rechargeable battery pack
 - One full roll of flexible ID tape
 - Convenient wrist strap



The tale of the tape



When you're creating professional-grade industrial labellers, you need professional-grade tapes to go with them. Brother has both. Our HGe and TZe tapes conform to the highest industry standards* and have been tested and certified to become a UL recognized component under the UL-969 standard, Marking and Labeling Systems (ISBN 1-55989-895X) categories PGJ12 and PGJ18. They're designed for every kind of use and to withstand the most extreme conditions (-30° C to 100° C). Fading, abrasion, moisture, grease and industrial solvents like acetone are no issue. And, they come in easy-swap, drop-in cassettes. Changing tape types is super-fast, efficient and uncomplicated, saving you valuable time and money. Plus, all tapes come in 8m rolls†. That's a lot more, for a lot less than the other guys.

- **Flexible ID Tape** – ideal for wrapping and flagging wires and cables
- **Extra-Strength Adhesive Tape** – perfect for rough, textured and powder-coated surfaces
- **Heat Shrink Tube** – the choice for meeting industry requirements
- **Standard Laminated Tape** – super for flat, smooth surfaces

P-TOUCH industrial labellers

Print. Cut. Peel. Apply. It's that simple.



Specifications

Features	PT-E300VP	PT-E500VP	PT-E550WVP
Tape Line**	HGE, TZE, HSE		
Tape Width**	3.5mm, 6mm, 9mm, 12mm, 18mm	3.5mm, 6mm, 9mm, 12mm, 18mm, 24mm	
Heat Shrink Tube	Yes		
Max. Print Resolution	180 dpi		
Max. Print Height	15.8mm	18.1mm	
Print Speed	Up to 0.8 ips (Adapter or Battery)	Up to 1.2 ips (Adapter) and 0.8 ips (Battery)	
Print Preview	WYSIWYG		
Display	15 Character x 2 Line Backlit		
Tape Cutter	Manual	Automatic	
Power Source: Batteries	Rechargeable (BA-E001 Li-ion battery pack, included), 6 "AA"***		
Rechargeable Battery	Li-ion (Included)		
Power Source: AC Adapter	AD-E001 (included)		
Interface	-	USB	Wi-Fi® (802.11 b/g) and USB
Number of Lines	5	7	
Keyboard	QWERTY		
Rotate Printing	Yes		
Fonts	7	14	
Download Feature	-	Yes	
Type Sizes	8	9	
Type Widths	4	5	
Type Styles	11		
(PC) Connectivity	-	Yes, download and printing	Yes, download and printing directly from Windows®, Mac®, iOS® or Android™ computer or mobile devices****
Operating Systems†	-	Windows® 8/7/XP, Windows Vista®, Mac OS® 10.7.5 - 10.9x*	
Unit Weight	1.63 lbs.†	2.0 lbs.†	
Auto Formats	Yes	Yes, plus download templates	

Tape types Get the right type of label for the exact application every time.



Heat shrink tubing



Laminated and durable tapes designed to work with all P-touch industrial labellers, as well as all other TZE compatible P-touch labellers



UL-recognized laminated, durable tapes designed for commercial and industrial labelling applications; come in 5-piece packs

Available tapes**

HEAT SHRINK TUBE Printable heat shrink tubing designed to mark cables, fibre and wires. 1.5m (4.9ft) long. 2:1 shrink ratio / 300V / 125° / VW-1

HEAT SHRINK TUBE WIDTH:	5.8mm (0.23in)	8.8mm (0.34in)	11.7mm (0.46in)	17.7mm (0.69in)	23.6mm (0.92in)	
RECOMMENDED FOR (OUTSIDE DIAMETER):	1.7-3.2mm (0.07-0.13in)	2.6-5.1mm (0.10-0.20in)	3.6-7.0mm (0.14-0.28in)	5.4-10.6mm (0.21-0.42in)	7.3-14.3mm (0.28-0.56in)	
HSe	BLACK ON WHITE	HSE211	HSE221	HSE231	HSE241	HSE251

EXTRA STRENGTH ADHESIVE TAPE Laminated tape designed for plastics & textured surfaces.

		6mm	9mm	12mm	18mm	24mm
HSe	BLACK ON WHITE	HGES2115PK	HGES2215PK	HGES2315PK	HGES2415PK	HGES2515PK
HSe	BLACK ON YELLOW		HGES6215PK	HGES6315PK	HGES6415PK	HGES6515PK
HSe	BLACK ON MATTE SILVER				HGES9415PK	HGES9515PK
HSe	BLACK ON CLEAR		HGES1215PK	HGES1315PK	HGES1415PK	HGES1515PK
TZe	BLACK ON WHITE	TZES211	TZES221	TZES231	TZES241	TZES251
TZe	BLACK ON CLEAR			TZES131		TZES151
TZe	BLACK ON YELLOW			TZES631	TZES641	TZES651
TZe	BLACK ON MATTE SILVER				TZES941	TZES951

FLEXIBLE ID TAPE Laminated tape designed for cable wraps and adhesive-to-adhesive cable flags.

TZe	BLACK ON WHITE			TZEFX231	TZEFX241	TZEFX251
TZe	BLACK ON YELLOW			TZEFX631		TZEFX651

STANDARD ADHESIVE TAPE Laminated tape designed for smooth & flat surfaces, and general purpose applications.

HSe	BLACK ON WHITE		HGE2215PK	HGE2315PK	HGE2415PK	HGE2515PK
HSe	BLACK ON YELLOW				HGE6415PK	HGE6515PK
HSe	BLACK ON MATTE SILVER				HGE9415PK	HGE9515PK
HSe	BLACK ON CLEAR				HGE1415PK	HGE1515PK
TZe	BLACK ON WHITE	TZE211	TZE221	TZE231	TZE241	TZE251
TZe	BLACK ON CLEAR	TZE111	TZE121	TZE131	TZE141	TZE151
TZe	BLACK ON RED			TZE431		TZE451
TZe	BLACK ON YELLOW			TZE631	TZE641	TZE651
TZe	BLACK ON BLUE			TZE531		
TZe	BLACK ON GREEN			TZE731		
TZe	BLACK ON FL. ORANGE				TZEB41	TZEB51
TZe	WHITE ON BLACK	TZE315	TZE325	TZE335	TZE345	TZE355
TZe	WHITE ON CLEAR			TZE135		
TZe	WHITE ON RED			TZE435		
TZe	WHITE ON BLUE				TZE545	
TZe	RED ON WHITE		TZE222	TZE232	TZE242	TZE252
TZe	RED ON CLEAR			TZE132		
TZe	BLUE ON WHITE		TZE223	TZE233	TZE243	TZE253
TZe	BLUE ON CLEAR			TZE133		

TAMPER EVIDENT TAPE Laminated tape designed to reveal a security pattern when label is removed or disturbed.

TZe	BLACK ON WHITE			TZESE4

PRINT HEAD CLEANING TAPES Maintains and restores print quality - Approx. 100 uses per tape.

			TZECL4

* Not all TZe tapes are UL recognized. Please consult the table above. ** Requires additional purchase. *** Transfer function not supported for Mac® computers. iOS® and Android™ apps are available from the Apple® App Store™ and Google Play™ store. † See system requirements on www.brother.ca. ‡ Without tape and battery. * All HGe and TZe laminated tapes are 8m (26.2ft) in length, except Black on FL Orange 5m (16.4ft), and are heat resistant, cold resistant, UV resistant, abrasive resistant, chemical resistant and water resistant. ©2016 Brother International Corporation (Canada) Ltd. BROTHER and Brother product names and service names are either a trademark or a registered trademark of Brother Industries, Ltd. All trademarks and registered trademarks referenced herein are the property of their respective companies. Photos are for illustration purposes only. 73958/08/2016