

PocketJet® 7 Mobile Printer



Mobile Printers

Full-page Mobile Printing Solutions

Major new advances in printing performance, wireless connectivity, battery life, and OS compatibility.

- Out-of-the-box ready to support full-page mobile printing from the most popular computer and mobile devices.
- Compact enough to fit into a briefcase or handbag, and versatile enough to mount nearly anywhere in a field service, transport or public safety vehicle.
- Freedom Architecture™ design adapts to diverse range of in-field and mobile use scenarios and wide range of operating systems.
- A leading printer in its class, recognized for compact, semi-rugged, full-page format and extreme field reliability.

Engineered to offer a new level of print freedom to mobile professionals spanning virtually any industry.

- Public Safety
- Home Healthcare
- Transportation & Logistics
- Route Accounting/DSD
- Pest Management
- Field Services Industries
- Today's Mobile Professional



Made for iPod iPhone iPad

Technical Specifications

Model	PocketJet® 722	PocketJet® 723	PocketJet® 762	PocketJet® 763	PocketJet® 763MFi	PocketJet® 773
Maximum Paper Width	8.5" (215.9mm)					
Maximum Printing Speed	8 ppm (pages per minute)					
Printing Method	Direct Thermal Technology					
Printer Resolution	203 x 200	300 x 300	203 x 200	300 x 300	300 x 300	300 x 300
Media (Direct Thermal)	Cut Sheet, Continuous Roll, Perforated Roll					
Media Sizes	Letter, legal, A4, continuous, custom sizes and pre-printed media are available upon request					
Interfaces	USB 2.0	USB 2.0	USB 2.0; Bluetooth Ver.2.1+EDR SPP, BIP, OPP and HCRP supported	USB 2.0; Bluetooth Ver.2.1+EDR SPP, BIP, OPP and HCRP supported	USB 2.0; Bluetooth Ver.2.1+EDR SPP, BIP, OPP, HCRP and IAP(MFi) Supported	USB 2.0; Wi-Fi 802.11b/g/n (Infrastructure Mode) 802.11b/g/n (Adhoc Mode) 802.11g/n (Wireless direct)
Wi-Fi Security (Adhoc)	NA	NA	NA	NA	NA	Open System (None/WEP)
Wi-Fi Security	NA	NA	NA	NA	NA	Infrastructure <Personal Mode> Open System (None/WEP) Public Key Authentication (WEP) WPA-PSK/WPA2-PSK (TKIP/AES) <Enterprise Mode> LEAP (CKIP) EAP-FAST (TKIP/AES) PEAP (TKIP/AES) EAP-TTLS (TKIP/AES) EAP-TLS (TKIP/AES); Direct WPA2-PSK (AES)
External Dimensions	260 x 32 x 57 mm (WxDxH)					
Power Options*	Li-ion Battery; AC Adapter; DC Vehicle Adapter					
Battery Yield: Li-ion	600 pages (from 100% charge)					

Compatibility

Operating Systems Supported	Windows® Vista® / 7 / 8 / 8.1 / 10; Windows® Server 2008/2008 R2; Windows® Server 2012/2012 R2; Mac OS® X v10.8 / 10.9 / 10.10; Linux Red Hat and Debian					
Windows® Mobile	No	No	Bluetooth	Bluetooth	Bluetooth	Wi-Fi
Android™	USB	USB	Bluetooth or USB	Bluetooth or USB	Bluetooth or USB	Wi-Fi or USB
iOS®	No	No	No	No	Bluetooth	Wi-Fi
Apple AirPrint™	No	No	No	No	No	Wi-Fi (iOS®/Mac®) or USB (Mac®)
Google Cloud Print™	No	No	No	No	No	Wi-Fi
Mopria™	No	No	No	No	No	Wi-Fi

PocketJet® 7 Paper Supplies

Standard

- 7 years archiveability
- Standard sensitivity
- General purpose

Synthetic

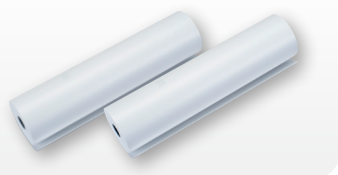
- 20 years archiveability
- Lightweight polypropylene film
- Water resistance
- High durability

Premium

- 20 years archiveability
- Higher sensitivity
- Darkest imaging

Fast Dry Paper

- 7 years archiveability
- Lightweight polypropylene film
- Water resistance
- High durability
- Ideal for applications that need ink to dry immediately (signatures, ink stamps, fingerprints)



Variety of preconfigured kits available, including:

Workforce Kit

Ideal for mobile workforces that typically carry the printer with them all day and then charge the printer when they return home or to the office. Includes the PocketJet® 7 with wireless and USB interfaces, a battery, preset auto off feature which times out when not in use, a carrying case, and a cigarette lighter adapter for contingency power.

Vehicle Kit

For a vehicle operator who will be mounting the printer inside the vehicle, and powering it primarily from the vehicle, this kit includes the printer with a USB interface and necessary power accessories. But because of the variety of mounting and placement options available, a mounting solution must be ordered separately.

Developer Kit

A specialized kit for developers, including a PocketJet® 7 printer, Brother™ SDKs, configuration software, and additional documentation is also available.

Basic Kit

Designed for the mobile professional who prints from a laptop or PC, this kit contains essentials including printer, power supply, paper and USB cable.

For more information please contact
pocketjet.sales@brother.ca