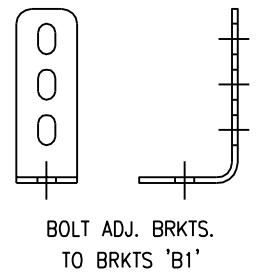
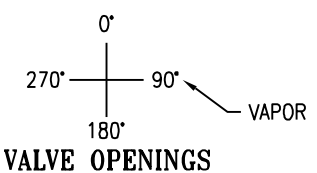
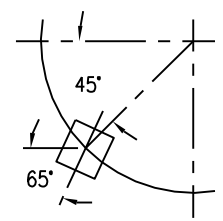
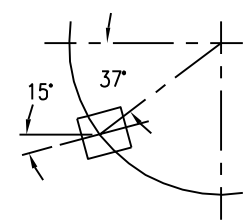
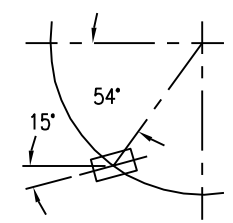
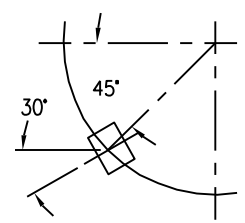
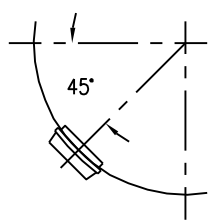
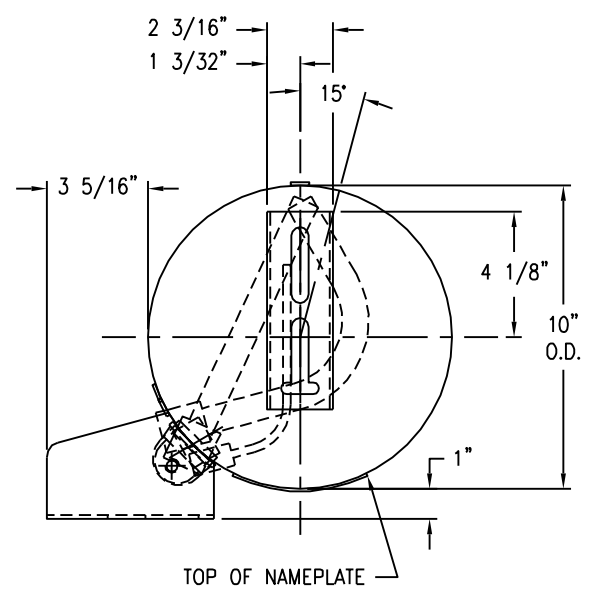
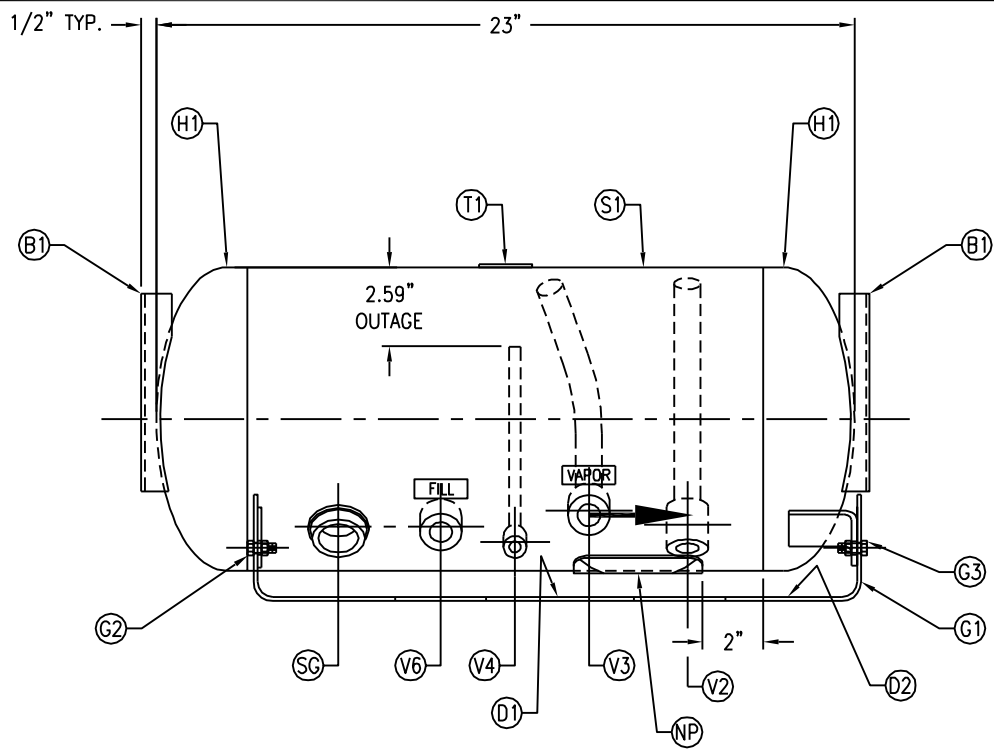


CODE/ADDENDA APPROVED
 RELEASED FOR PRODUCTION DATE
 O.C.



SG FLANGE

FILL V6 CPLNG

OUTAGE V4 CPLNG

VAPOR V3 CPLNG

RELIEF V2 CPLNG

VALVE OPENINGS

BOLT ADJ. BRKTS.
TO BRKTS 'B1'

SPECIFICATIONS	
O.D. 10	LGTH. 23
MAWP 312	PSI @ 650 °F
RT- MDMT -20°F	@ 312 PSI
EXMT	TEST PSI
XRAY	
CRN F2193.1234567890	
WELD DETAILS: M-1932	
STD. TOLERANCES (UNLESS OTHERWISE NOTED): M-2461	
GAL. 6.9	S.A. 5.3
WT. 4.3#	CU.FT. .93
CORR ALW	SH HD
CODE: ASME SEC. VIII DIV. I, LATEST EDITION & ADDENDA	

MTEFRATN.APPS\DWG\6000\
MANCHESTER TANK

VAPOR APPLIANCE TANK

DRAWN BY DN	DATE	SCALE: NONE
APP. BY JD	DATE	DRAWING NO. 6813

SYM	DATE	BY	REVISION	APP	XREF	REV.	NOTES
D		EGB		MR			1. CENTER THE 3"X 3.1/4" CUT-OUT IN THE GUARD UNDER THE FILL CPLNG.
E		EGB		EGB			
F		TA		TA			
G		EGB		EGB			