

Wide Format, Professional Label Printers

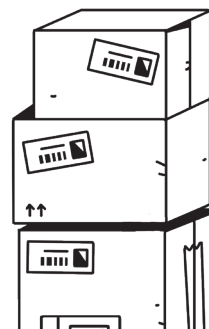
QL-1100/QL-1110NWB



QL-1100



QL-1110NWB



Ideal for warehouses, mail rooms and businesses that send packages.

- Prints labels up to 4" wide, ideal for standard shipping labels used by major carriers.
- Auto Crop function lets online sellers easily print product and other barcode labels from A4/Letter size label sheet templates (Windows only).
- Wide range of connectivity options.
- PC, Mac®, iOS and Android™ compatibility.
- High speed printing of up to 69 labels per minute*.
- Uses continuous rolls and an auto cutter to print labels and banners up to three feet long.

* Based on using standard address labels, black text only, at 300 X 300 dpi.



brother
at your side

The Brother QL-1100 series offers professional label printers with unrivalled versatility not only for offices but also for warehouses, facilities management and other industries.

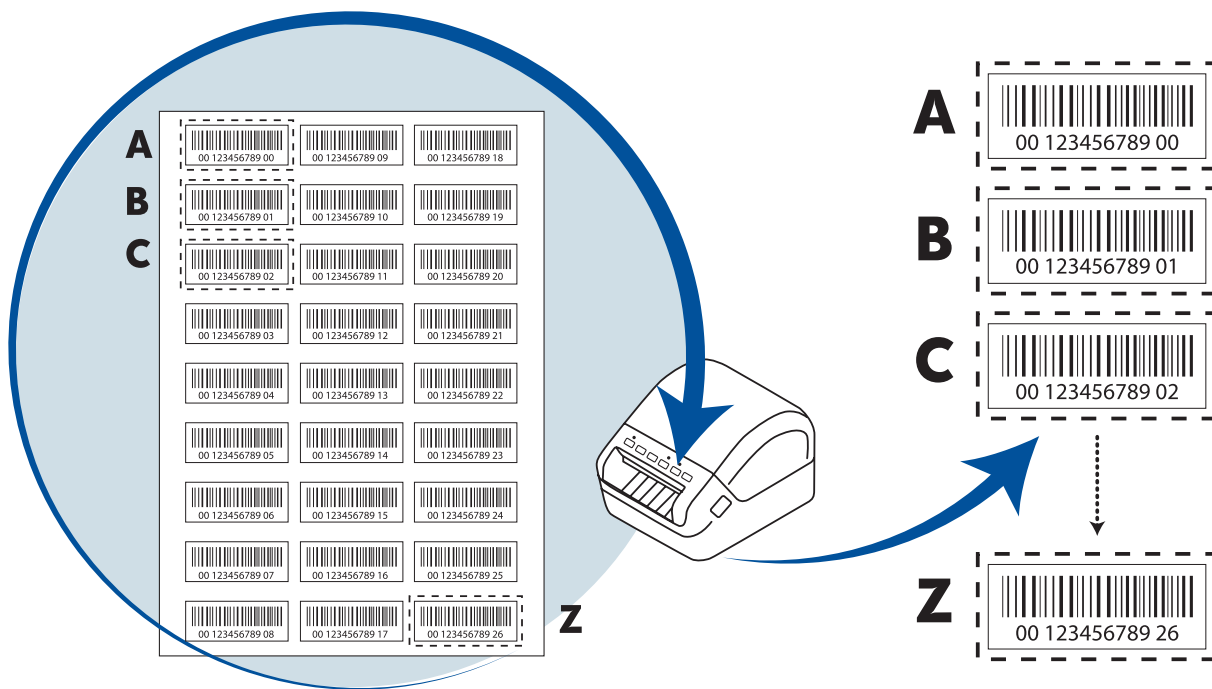
Create labels with black print up to three feet in length, from PC, Mac®, iOS or Android™ devices. All models allow easy connection to desktop computers using USB. The flagship Brother QL-1110NWB also adds Wireless, Ethernet and Bluetooth® wireless connectivity.

For developers and systems integrators looking to incorporate label printing as part of their solutions, software development kits for Windows, iOS and Android™ offer an easy way to add support for the Brother QL-1100 series label printers.



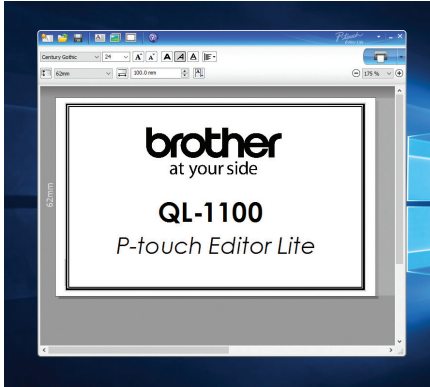
Auto crop Windows only

The Auto Crop feature automatically identifies and crops individual labels (including barcodes) from a A4/Letter sized sheet and prints each label one by one. With the Brother QL-1100 series, you can print the entire sheet of labels at once or use the snapshot feature to select a section of labels to print individually. This is a great feature for product labels or other labels where sheet formats are already generated. Now you can easily and quickly print only the labels you need.



Software Solutions

With label design apps for desktop PCs and mobile devices, and software development kits to integrate the QL-1100 range into your own applications, you can choose the best option for your label printing needs.

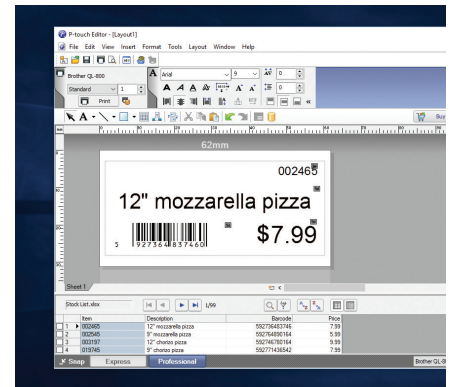


P-touch Editor Lite / P-touch Editor Lite LAN

Built inside the Brother QL-1100, this easy-to-use label design software works without the need to install software or drivers. Working like a USB flash drive, simply connect to your PC using USB, and launch the software from the drive that appears. Include images, frames and any of your fonts on your label design and print! A version for network-connected models is also available; simply run the software to allow many PCs in an office to print labels to the one printer. Again, no installation needed.

P-touch Editor with Microsoft Office add-in

Custom design professional labels with images, logos, barcodes and frames. Link to data contained in Excel or .csv files, to print many labels quickly and efficiently. The Microsoft Office add-in lets you highlight, click and print right from within Word, Excel, or Outlook.

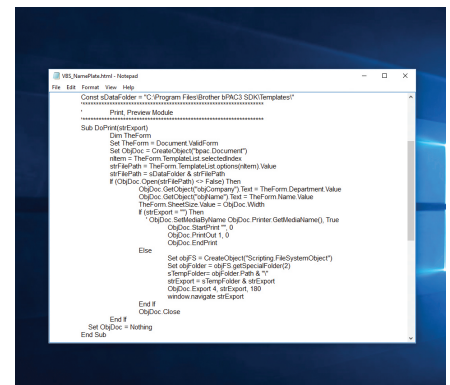


Brother iPrint&Label app** for iOS and Android™ smartphones/tablets

Print labels on the Brother QL-1100 series using the free iPrint&Label app. Connect via Wi-Fi or Bluetooth® (on Brother QL-1110NWB), and choose one of the pre-defined templates or quickly design your label from scratch. This free app is available from your mobile device's app store by searching "Brother iPrint&Label".

Software Development Kits for Windows, iOS and Android™

System integrators and software developers can now take advantage of various Brother software development kits that allow easy integration of label printing directly within their own apps and software. For more information please visit <http://www.brother-usa.com/lp/civ/home.aspx>.



** Brother QL-1100 requires separate purchase of USBtoGO cable. Compatible with Android™ only.

Logistics and Warehousing

In busy warehouses and mailrooms, accurate and timely labelling of packages, envelopes and product cartons is essential to ensure the smooth running of all logistics operations. The Brother QL-1100 series is capable of printing shipping labels used by all major carriers.



Handling labels



Address labels



Shipping labels



Product packaging



DK rolls for the QL-1100 label printer range

Wide range of labels available in paper and plastic film material, pre-sized labels or continuous rolls

Die-Cut Paper Labels:

Item Number	Description	Uses	Label Size	Colour	Labels per Roll
DK-1201	Standard Address	Postcard addresses, standard envelopes, binders, small packages, other mail	1.1" x 3.5" (29mm x 90.3mm)	Black on White	400
DK-1202	Shipping	Flat envelope addresses, binders, medium-size packages, storage boxes, other mail	2.4" x 3.9" (62mm x 100mm)	Black on White	300
DK-1203	File Folder	File folders	0.66" x 3.4" (17mm x 87.1mm)	Black on White	300
DK-1204	Multi-Purpose/Return Address	Envelope return addresses	0.66" x 2.1" (17mm x 54.3mm)	Black on White	400
DK-1208	Large Address	Files folders, flat envelopes, binders, storage boxes	1.4" x 3.5" (38mm x 90.3mm)	Black on White	400
DK-1209	Small Address	Postcard addresses, standard envelopes, binders, small packages, other mail	1.1" x 2.4" (28.9mm x 62mm)	Black on White	800
DK-1219	Round	Small microscope specimen samples	0.47" diameter (12mm)	Black on White	1,200
DK-1240*	Large Multi-Purpose	Flat envelope addresses, binders, large-size packages, storage boxes, other mail	1.9" x 4" (50.5mm x 101mm)	Black on White	600
DK-1247*	Large Shipping	Flat envelope addresses, binders, large-size packages, storage boxes, other mail	4.07" x 6.4" (103mm x 164mm)	Black on White	180
Film Labels:					
DK-1207	CD/DVD Labels	CD labels	2.2" diameter (58.2mm)	Black on White	100

Continuous Length Tapes*

Item Number	Description	Uses	Label Size	Colour	Labels per Roll
DK-2205	Wide Width	Flat envelope addresses, binders, medium-size packages, storage boxes, other mail	2.4" x 100' (62mm x 30.4m)	Black on White	300
DK-2210	Medium Width	Binder spines, postcards, standard envelopes, small packages, other mail	1.1" x 100' (29mm x 30.4m)	Black on White	300
DK-2214	Narrow Width	Video spines, file folders	0.47" x 100' (12mm x 30.4m)	Black on White	300
DK-2246*	Extra-Wide Width	Flat envelope addresses, binders, storage boxes, large-size packages, banners, signs	4.07" x 100' (103mm x 30.4m)	Black on White	300
Film Tapes:					
DK-2211	Medium (White)	Storage boxes, signs, displays	1.1" x 50' (29mm x 15.2m)	Black on White	150
DK-2212	Wide (White)	Storage boxes, signs, displays	2.4" x 50' (62mm x 15.2m)	Black on White	150
DK-2113	Wide (Clear)	Large window signs, wide envelopes	2.4" x 50' (62mm x 15.2m)	Black on Clear	150
DK-2606	Wide (Yellow)	Storage boxes, signs, displays	2.4" x 50' (62mm x 15.2m)	Black on Yellow	150
Removal Paper Tapes:					
DK-4205	Wide (White)	Name badges, storage boxes	2.4" x 100' (62mm x 30.4m)	Black on White	300
DK-4605	Wide (Yellow)	Name badges, storage boxes	2.4" x 100' (62mm x 30.4m)	Black on Yellow	300

* Additional purchase required.

* 4" wide format format DK supplies are compatible only with the Brother QL-1050/1050N/1060N/1100/1110NWB.

† Compatible with Brother QL-700/710W/720NW/QL-800/1100 series.

‡ Removable adhesive labels can be cleanly removed from general, smooth, flat surfaces.

* For use with QL-800, QL810W, and QL-820NWB.

Specifications

QL-1100

QL-1110NWB

Printing / Media		
Printing Technology	Direct Thermal	
Maximum Resolution	300 x 300dpi	
Maximum Print Speed*	Up to 69 labels per minute	
Tape Sizes	Die-cut and Continuous	
Maximum Tape Width	4.09"	
Maximum Print Width	4.0**	
Maximum Label Length	3 feet	
Cutter	Auto	
Cutter Life	Up to 300,000 (die-cut labels) 150,000 (continuous labels)	
Connectivity		
USB	USB version 2.0 full-speed	
USB Host Capability	Yes (HID class)	
Bluetooth® Wireless Technology	Bluetooth 2.1+EDR	
Bluetooth® Profiles	SPP (Serial Port Profile) OPP (Object Push Profile) BIP (Basic Imaging Profile) HCRP (Hard Copy Cable Replacement Profile) iAP/(MFI supported) profile	
Wireless LAN	IEEE802.11b/g/n	
Wireless LAN Security (Infrastructure mode)	WEP, WPA-PSK/WPA2-PSK (TKIP/AES), LEAP (CKIP), EAP-FAST (TKIP/AES), PEAP (TKIP/AES), EAP-TTLS (TKIP/AES), EAP-TLS (TKIP/AES)	
AirPrint®	Yes	
Wired LAN	10/100 Base-TX	
Mobile Device Compatibility		
Software/App^	Brother iPrint&Label, free app download for USBtoGo printing from your Android™ mobile device	AirPrint®, Brother iPrint&Label, free app download for wireless printing from your Apple® or Android™ mobile device
Memory		
Flash (for label templates)	7.8	
Locations (for label templates)	99	255
Power		
Power	120V ~ 60Hz 1.5A	120V ~ 50/60Hz 1.6A
ENERGY STAR® Certified	Yes	

* Based on using standard address labels, text only, at 300 x 300 dpi.

^ Requires connection to a wireless network. For more details regarding Brother iPrint&Label app visit www.brother-usa.com and search iPrint&Label.

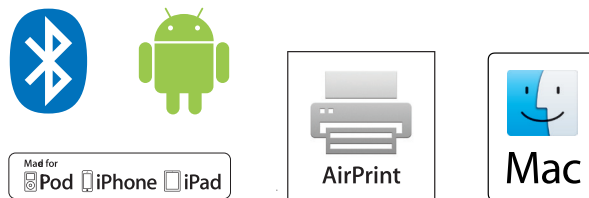
♦ There is a chance that you can't print in full width depending on your environment. For the details, see our website, support.brother.ca Note: We recommend designing with enough margin, because there is a possibility of cut off if the paper is not fed in straight.

Specifications

QL-1100

QL-1110NWB

Weights / Dimensions		
Dimensions	17.0 x 21.9 x 14.8 cm (W x D x H)	
Weight	1.65 kgs	1.73 kgs
Software / Firmware		
Operating System	PC: Windows 10, Windows 8/8.1, Windows 7, Windows Server 2008, 2008 R2, 2012, 2012 R2, 2016. Mac: OS X® v10.11.x - v10.13.x	
SDK Availability (visit http://www.brother-usa.com/lp/civ/home.aspx)	b-PAC (for Windows) Brother Print SDK for Android™ (only USB)	b-PAC (for Windows) Brother Print SDK for Android™ Brother Print SDK for iPhone/iPad (for iOS)
Supported Printer Commands	Raster ESC/P P-touch Template	
Barcode Symbologies (using P-touch Editor)	CODE39, CODE128, UCC/EAN128 (GS1-128), ITF (I-2/5), CODABAR (NW-7), UPC-A, UPC-E, EAN13, EAN8, ISBN-2 (EAN13 AddOn2), ISBN-5 (EAN13 AddOn5), Laser Barcode, POSTNET, RSS (RSS14 Standard, RSS14 Truncated, RSS14 Stacked, RSS14 Stacked Omni, RSS Limited, RSS Expanded, RSS Expanded Stacked), PDF417 (Standard, Truncate, Micro), QR code (Model1, Model2, Micro), Data Matrix (ECC Square, ECC Rectangular), MaxiCode (Model2, Model3, Model4, Model5) RSS symbols / CODE93 / POSTNET / UPC/EAN EXTENSION / MSI / QR Code (model 1, model 2, micro QR) PDF417 (Standard, Truncate, MicroPDF417) / Data Matrix (ECC200 Square, ECC200 Rectangular) / MaxiCode / Aztec (Windows only), IMB	
Barcode Symbologies (Built-in printer firmware)	CODE39, CODE128, UCC/EAN-128(GS1-128), ITF(I-2/5), CODABAR(NW-7), UPC-A, UPC-E, EAN13(JAN13), EAN8, GS1 DataBar(RSS)(GS1 DataBar Omnidirectional,GS1 DataBar Truncated,GS1 DataBar Stacked,GS1 DataBar Stacked Omnidirectional,GS1 DataBar Limited,GS1 DataBar Expanded,GS1 DataBar Expanded Stacked), PDF417(Standard, Truncate, Micro), QR Code(Model 1, Model 2, Micro), Data Matrix (ECC200 Square, ECC200 Rectangular), MaxiCode, CODE93, POSTNET, UPC-E EXTENTION, MSI, Aztec	
Internal Fonts	Bitmap fonts: Letter Gothic Bold, Helsinki, Brussels, San Diego, Brougham Font sizes: 24, 32, 48 dots Outline fonts: Letter Gothic Bold, Helsinki, Brussels Font sizes: 33-400 dots (22 sizes)	
Date/Time Stamp	PC generated	
Included Items		
In the Box	P-touch Editor Software & Driver (Web Download), AC Power Cable, USB Cable, Starter Rolls: DK-1247 Diecut Large Shipping Labels (41 labels), DK-2205 Continuous Length Paper Tape – 2.4" (62mm) x 16.4'	



"Made for iPod," "Made for iPhone," and "Made for iPad" mean that an electronic accessory has been designed to connect specifically to iPod, iPhone, or iPad, respectively, and has been certified by the developer to meet Apple performance standards. Apple is not responsible for the operation of this device or its compliance with safety and regulatory standards. Please note that the use of this accessory with ipod, iPhone, or iPad may affect wireless performance.

iPad, iPhone, iPod, AirPrint and Mac are trademarks of Apple Inc., registered in the U.S. and other countries. Bluetooth word mark and logos are owned by the Bluetooth SIG, Inc. and any use of such marks by Brother Industries, Ltd. is used under license.

The Android robot is reproduced or modified from work created and shared by Google and used according to terms described in the Creative Commons 3.0 Attribution License.

Wi-Fi Certified logo is a registered trademark of Wi-Fi Alliance®.

All specifications correct at time of printing. Brother is a registered trademark of Brother Industries Ltd. All other brand names and product names are registered trademarks or trademarks of their respective companies. © 2015 Google Inc. All rights reserved. Android is a trademark of Google.

brother
at your side