



P-touch
ELECTRONIC LABELLING SYSTEMS

PT-9500PC

Perfect for:

- Asset management
- Property management
- Manufacturing
- Telecom & datacom
- General office



Commercial / Industrial Label Printer



Advanced printing features allow you to produce crisp text, bar codes and more, on crack and peel laminated labels - fast.

KEY FEATURES:

- Fast, 360 dpi high-resolution printing
- Includes PT-Editor software with predesigned label templates for easy label creation
- NEW half-cutter — makes backing easy to remove
- Professional formatting features
- Print labels from databases
- 16 industry-standard bar codes
- Easy USB or serial connection to your PC or Mac®

360 dpi



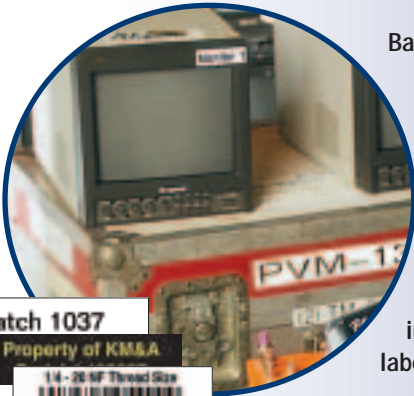
At your side.™
brother®



ELECTRONIC LABELLING SYSTEMS

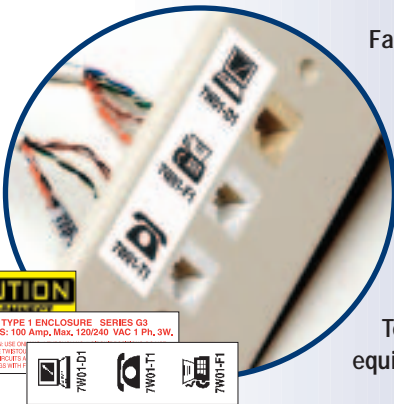
The high-performance solution for all your applications

Asset Management



- Bar code labels
- Document tracking
- Computer hardware
- Serial numbers and inventory management labels

Telecommunications



- Face plates
- Patch panels
- Cable wrapping and wire flagging
- Telephone/computer equipment

Manufacturing and General Office



- Warehouse shelf identification
- Warning & instruction labels
- Calibration
- Storage media – CDs, video tapes, DATs, etc.
- File folders
- Visitor name badges

High-performance label printer ... Exceptional label-design software



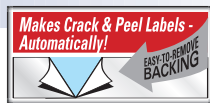
The PT-9500PC
Advanced printing features
allow you to produce crisp
text, bar codes and more on
crack-and-peel laminated
labels – fast.

Fast, 360 dpi high-resolution label printing

- Prints laser-quality text and graphics – even black and white photos – on laminated labels at speeds up to 20mm per second
- Prints industry-standard bar code labels
- Prints horizontal, vertical, rotated and "mirror" labels
- Prints up to 16 lines on a label
- Prints labels from 1/4" to 1 1/2" wide

NEW half-cutter – makes crack-and-peel laminated labels

- Heavy-duty, industrial-strength cutter
- Makes easy-peel labels one at a time or in strips
- Slits label for easy removal



Easy USB or serial connection to your PC or Mac®

- USB cable, serial cable, and drivers included

Uses the widest variety of interchangeable TZ tapes and cassettes

- All TZ tapes: Standard, Extra-Strength Adhesive, Flexible ID, Tamper-Evident, even Fabric Iron-on (for clothing)
- Accepts Avery® die-cut label cassettes: address, return-address and file folder

INCLUDES

The most powerful, versatile – and easy-to-use – P-touch label-design software, ever.

There's never been a better way to design and produce the exact P-touch label you need for all your applications.

P-touch Editor 4.0 gives you a full range of sophisticated label design and production tools to meet your most demanding challenges. It features a true what-you-see-is-what-you-get (WYSIWYG) interface, innovative enhancements like Screen Capture, built-in label templates and tools to craft and store your own, plus hundreds of symbols and clip art. It even allows you to import your own text and graphics, and link to data from Microsoft Access® databases and Microsoft Excel® spreadsheets without recreating the data.



This powerful label design and production software is included on CD with your purchase of the PT-9500PC, and contains drivers for both PC and Mac® platforms.

Prints labels from databases

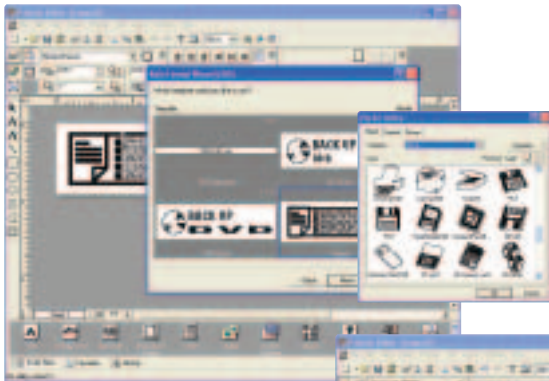
- ▶ Drag and drop database fields onto your label
- ▶ View database and label design together on one screen
- ▶ Use optional b-PAC SDK† to print directly from Microsoft Excel® and Microsoft Access®



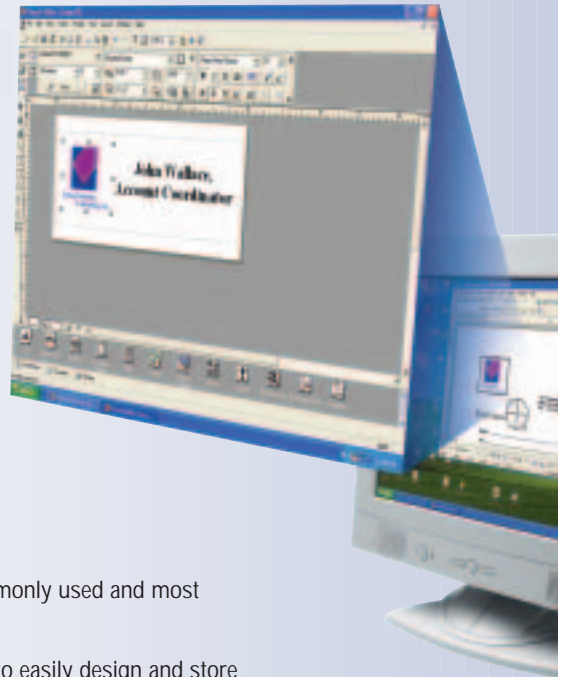
† Available at www.brother.com

NEW P-touch Editor 4.0 label-design software

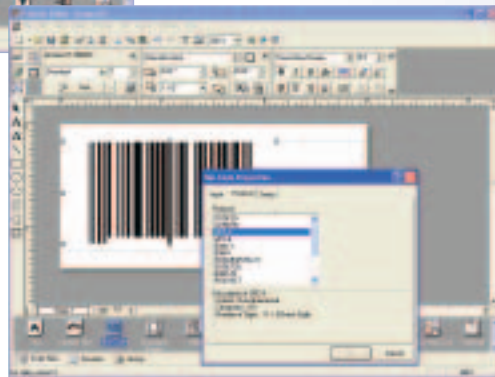
Powerful, professional label-design features



- ▶ What-you-see-is-what-you-get (WYSIWYG) editing
- ▶ Built-in Screen Capture icon – select an area of your screen, and click to include on a label
- ▶ Uses TrueType® fonts, plus import common graphic formats (*.jpg/jpeg *.tif/tiff; *.gif; *.bmp, and more)

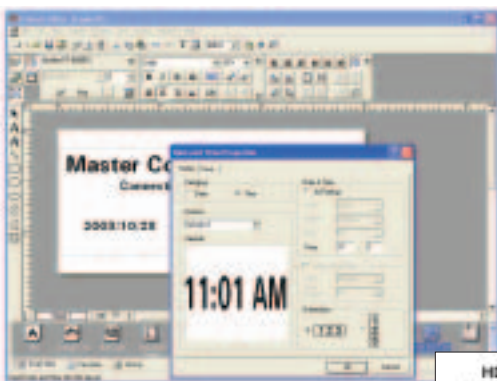


- ▲ Includes pre-designed label templates – and hundreds of symbols and clip art – for office, industrial, asset management, and telecom/ datacom applications
- ▶ Offers up to 16 built-in bar code symbologies, including 2-D bar codes

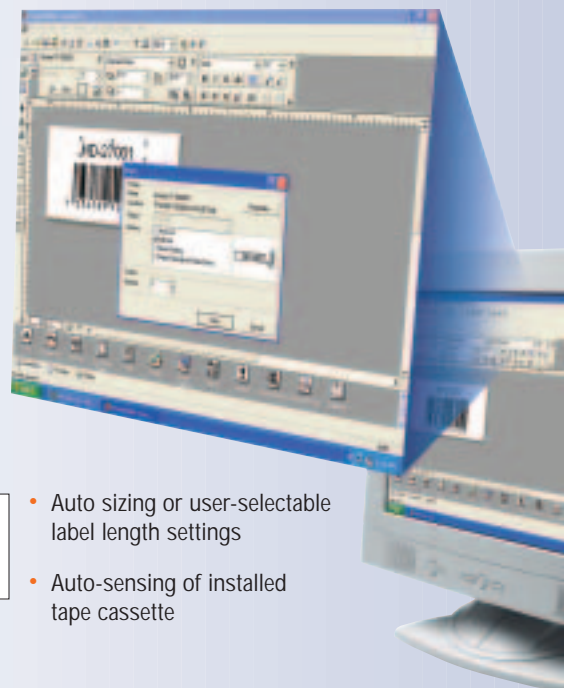


- Stores commonly used and most recent files
- Allows you to easily design and store your own custom label templates
- Link to data in Access® and Excel® databases, through drag-and-drop of fields into label layouts

Built-in, commercial label-production features



- ▶ Auto serialization (up to 999) even for bar codes, and repeat (multi-copy) printing up to 5000 copies
- ▼ Chain printing and minimal margin (1mm) settings to reduce tape waste



- ▲ Fixed or auto time/date stamping

- Auto sizing or user-selectable label length settings
- Auto-sensing of installed tape cassette

Networkable, too!

Add the optional NEW PS-9000 USB Print Server*

Share the power of the PT-9500PC on your Ethernet network with the PS-9000.

Extend the versatility of the PT-9500PC to all the users on your 10/100 BaseT network, and allow them to design and print durable laminated P-touch labels directly from their connected desktops.

It's the perfect solution for small workgroups.



Just install the optional external PS-9000 USB Print Server using the included software, the PT-9500PC's included USB cable, and connect it to your network via a standard Ethernet cable (not included).

The software features step-by-step guidance, and a full array of network administration tools to simplify installation and monitor print jobs sent to the PT-9500PC.

Find out more today – including detailed specifications – by visiting the P-touch section within www.brother.ca

*Requires additional purchase



ELECTRONIC LABELING SYSTEMS

Model PT-9500PC Electronic Labeling System

PT-9500PC Specifications

PRINTING FEATURES

- Crisp, professional-quality 360 dpi printing of text and graphics
- Prints durable laminated labels from 1/4" to 1 1/2" wide
- Prints Avery® address, return address, and file folder labels* simply by switching cassettes
- Prints from Microsoft and text-formatted databases (*.csv, *.xls, *.mdb)
- Prints up to 16 lines
- Fast 20 mm/sec printing
- Print a strip of labels or print labels one at a time

LABEL-DESIGN FEATURES

- Includes pre-designed telecom/datacom and other commercial templates plus hundreds of industrial and business symbols and clip art
- Design and save your own custom templates
- Accepts all TrueType® fonts
- Prints 16 scannable industry standard bar code symbologies
- Prints .gif, .jpg, JPEG, TIF/TIFF and other graphic formats
- Import text and graphics from leading office software suites
- Prints serialized alpha/numeric labels

EASE-OF USE FEATURES

- Built-in automatic cutter (makes easy-peel labels)
- Uses interchangeable TZ tape cassettes
- Includes USB and RS-232C interfaces for connection to a computer
- Compatible with Windows 98/Me/2000 Professional/XP and Mac OS 8.6 to 9.x, OS X 10.1 to 10.2.6

CARTON CONTENTS

- PT-9500PC Label Printer
- AC Adapter
- Serial Interface Cable
- CD (Design Software & Drivers)
- Tape Catch Tray
- USB Cable
- One TZ261 1 1/2" Black on White TZ Laminated Tape

SPECIFICATIONS

- Powered by AC Adapter (included)
- Unit Weight: 1.2Kg / 2.64 lbs.
- Unit Dimensions: 4.6" (117mm) (w) x 5" (127mm) (h) x 7.5" (191mm) (d)
- One year limited warranty

16 BAR CODE PROTOCOLS (included in software)

- CODE39
- 1-2/5 (ITF)
- UPC-A
- UPC-E
- EAN13
- EAN8
- CODABAR (NW-7)
- CODE128
- EAN128
- POSTNET
- ISBN-2
- ISBN-5
- PDF417
- QR CODE
- Data Matrix
- Laser Bar Code

PT-9500PC SYSTEM REQUIREMENTS

Port	Microsoft® Windows®		Macintosh
	Serial port (RS-232C)	USB 1.1 port	USB 1.1 port
Operating System	Installed with Microsoft® Windows® 95 ¹ , NT 4.0 ¹ , 98, 98SE, Me, 2000 Pro or XP	Pre-installed with Microsoft® Windows® 98, 98SE, Me, 2000 Pro or XP	Installed with Mac OS 8.6 to 9.x or Mac OS X 10.1 to 10.2.6, and equipped with a USB port as standard equipment
Memory	Minimum 64 MB		Minimum of 24 MB of available memory
Hard-Disk Free Space	Minimum of 70 MB of available hard-disk space ¹¹		Minimum of 100 MB of available hard-disk space ¹¹
Others	CD-ROM drive (required to install the software)		

Uses interchangeable TZ tape cassettes.*

Standard Adhesive Tape – Laminated

For Flat, Smooth Surfaces, Indoors and Outdoors

Perfect for labelling:

- File folders and binders
- Name badges
- Small signage

Our standard adhesive tapes are designed for flat, smooth surfaces, and resist water, grease or grime – the laminated surface wipes clean – and fading and abrasion. They also withstand temperatures from -30 to 100 degrees C and can be used for indoor and outdoor applications.

5.8m long, unless otherwise noted	1/4"	3/8"	1/2"	3/4"	1"	1 1/2"
BLACK ON WHITE	✓	✓	✓	✓	✓	✓
BLACK ON CLEAR	✓	✓	✓	✓	✓	✓
BLACK ON CLEAR MATTE				✓		
BLACK ON RED		✓	✓	✓	✓	
BLACK ON YELLOW			✓	✓	✓	✓
BLACK ON GREEN				✓	✓	
BLACK ON BLUE				✓	✓	
BLACK ON FL. ORANGE				✓	✓	
WHITE ON BLACK	✓	✓	✓	✓	✓	✓
WHITE ON CLEAR				✓	✓	
WHITE ON BLUE				✓	✓	
RED ON WHITE				✓	✓	
BLUE ON WHITE				✓	✓	
GOLD ON BLACK				✓	✓	



* 16.4' long

Extra Strength Adhesive Tape – Laminated

For Tough Applications – With up to 2x the adhesion strength of our standard laminated labels

Perfect for labelling:

- Harsh environments
- Painted surfaces
- A variety of plastics
- Textured surfaces

8m long	1/4"	3/8"	1/2"	3/4"	1"	1 1/2"
BLACK ON WHITE	✓	✓	✓	✓	✓	✓
BLACK ON CLEAR	✓	✓	✓	✓	✓	✓
BLACK ON YELLOW	✓	✓	✓	✓	✓	✓
WHITE ON CLEAR				✓	✓	
BLACK ON MATTE SILVER				✓	✓	✓



Flexible ID Tape – Laminated

Special Adhesive For Bending, Wrapping & Flagging

Perfect for labelling:

- Cable & wire
- Pipes and other round surfaces
- Vials, beakers & test tubes
- Electrical fittings and connectors*

* Not suitable as an electrical insulator

8m long	1/4"	3/8"	1/2"	3/4"	1"	1 1/2"
BLACK ON WHITE	✓	✓	✓	✓	✓	✓

Tamper Evident Tape – Laminated

Security Pattern Appears If Removed

Perfect for labelling:

- Computers / electronic devices
- Furniture & other company property
- Equipment after calibration
- Items sealed for security



8m long	1/4"	3/8"	1/2"	3/4"	1"	1 1/2"
BLACK ON WHITE	✓	✓	✓	✓	✓	✓

For a system with Microsoft® Windows® NT 4.0, 2000 Pro or XP, be sure to install it from an account with administrator privileges.

¹ With Microsoft® Windows® 95 and NT 4.0, connection is possible only from a serial port. Internet Explorer 3.02 or later is required for installation. In addition, when using NT 4.0, Service Pack 6 or later must be installed, and Internet Explorer 5.5 is needed for clip art. P-touch Quick Editor and P-touch AV Editor cannot be used with Microsoft® Windows® 95 and NT 4.0.

¹¹ The hard-disk free space is required for installing all options. Additional hard-disk space required for HTML manual.

* Requires additional purchase

© 2004 Brother International Corporation
1, rue Hôtel de Ville, Dollard-des-Ormeaux, Québec, H9B 3H6.
All registered trademarks referenced herein are the property of their respective companies. All specifications subject to change without notice.
Printed in Canada. Brother is a registered trade mark of Brother Ltd. Negoya, Japan

For P-touch information, visit www.brother.ca or call 1-877-BROTHER (1-877-276-8437)

Got questions? Please contact the Product Manager by e-mailing your questions to:
service@brother.ca



P/N 200405/CAT9500EN