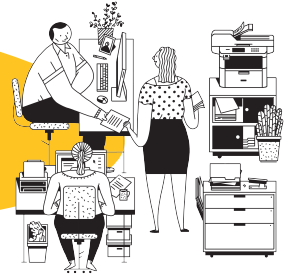


Compact Laser Multifunction copier

DCP-L2550DW

with Duplex Printing
and Wireless Networking



50 Page capacity
Automatic Document
Feeder

Automatic duplex
Printing

Up to 36ppm Printing
& copying

Mobile Device Printing

Wireless and Wired
Networking



8 YEARS
IN A ROW
—2016—
BROTHER PRINTERS
A trademark of Ziff Davis.
Used under license.



4 YEARS
IN A ROW
—2016—
BROTHER PRINTERS
A trademark of Ziff Davis.
Used under license.

TOP FEATURES

Fast Printing & copying

Fast, high-quality printing and copying at up to 36ppm

Wireless and Wired Networking

Easy to set up and share on your wired or wireless network or connect locally via Hi-Speed USB 2.0 interface

Automatic Duplex Printing

Help save paper with automatic duplex printing

Standalone copying

No PC required to make copies. Valuable copy features including: ID copy, Sort/Stack, Reduce/Enlarge documents from 25-400%, and N-in-1 copying

High-Quality colour Scanning

Offers a variety of "scan-to" and advanced features including ID Scan* and more

50-Page capacity Auto Document Feeder

Convenient for copying and scanning multi-page documents (up to legal size)

Convenient Paper Handling

250-sheet capacity paper tray adjustable for letter or legal size paper, plus a manual feed slot for envelopes

Mobile Device Printing

Wireless printing from your mobile device via : Airprint™, Google Cloud Print™, Brother iPrint&Scan (free downloadable app) and Wi-Fi Direct™

High-Yield Replacement Toner cartridge*

Help lower your operating costs with a high-yield 3,000-page[†] replacement toner cartridge*

Outstanding Support

We are Canadians serving Canadians. We provide machine-lifetime support including extensive online technical support options such as videos, TWITTER, FACEBOOK and more. We also provide a 1-year limited warranty. We're at your side every step of the way.

brother
at your side

Specifications:

Print Technology	Electrophotographic Laser
LCD Display (type/size)	2-line Mono
Paper Size	Paper Tray: Up to 8.5" x 14" (legal) Manual Feed Slot: 3" to 8.5" (W), 5" to 14" (L)
Print Speed (maximum)	Up to 36ppm
Print Resolution (maximum)	Up to 2400 x 600 dpi
Emulations	PCL6, BR-Script3 [±]
Memory (std./max)	128 MB/128 MB
Duplex Printing Capability	Yes
Paper Input Capacity (maximum) [∞]	250-sheet capacity lower paper tray, plus a single-sheet manual feed slot
Output Capacity (maximum) [∞]	100 sheets (face down), 1 sheet (face up)
Standard Interfaces	Wireless 802.11b/g/n, Ethernet, Hi-Speed USB 2.0
Copy Speed (maximum)	Up to 36cpm
Copy Resolution (maximum)	600 x 600 dpi
Copy Reduction/Enlargement	25% - 400% in 1% increments
Copy Options	Sorting, N-in-1, Multi-copying/stack (up to 99), ID copy
Scanner Type	Colour Flatbed with ADF
Document Glass Size	8.5" x 11" (letter)
Scan Resolution (maximum)	Optical: Up to 1200 x 1200 dpi ¹ Interpolated: Up to 19200 x 19200 dpi ¹
Scan To Capability	File, Image, E-mail, OCR, Microsoft® SharePoint [®] *
Document Viewer / OCR Software	Nuance™ PaperPort™ 14SE w/ OCR for Windows® (by download)
Operating Systems Compatibility ²	Windows® 8.1, 8, 7 / Windows® 10 Home / 10 Pro / 10 Education / 10 Enterprise Windows Server® 2016 / 2012 R2 / 2012 / 2008 R2 / 2008 Mac® OS X® v10.10.5, 10.11.x, 10.12.x, 10.13.x Linux
Mobile Device Compatibility ³	AirPrint™, Google Cloud Print™, Brother iPrint&Scan, Wi-Fi Direct™
Maximum Monthly Duty Cycle ⁴	Up to 15,000 pages/month
Recommended Monthly Volume ⁵	Up to 2,000 pages/month
Warranty	1-year limited warranty

Supplies & Accessories*:

TN-730	Standard Capacity Black Toner Cartridge (1,200 pgs) [†]
TN-760	High Capacity Black Toner Cartridge (3,000 pgs) [†]
DR-730	Drum Unit (12,000 pgs) [†]

Carton contents:

Brother DCP-L2550DW
Starter Black Toner Cartridge (700 pages) [†]
DR730 Drum Unit (12,000 pgs) [†]
Quick Setup Guide and Basic User's Guide
Installation CD-ROM (Mac OS available from download links)
AC Power Cord

Setup information:

UPC Code	012502649663
Unit Dimensions	410 x 399 x 319 mm (WxDxH)
Unit Weight	11.7 Kg
Carton Dimensions	517 x 580 x 434 mm (WxDxH)
Carton Weight	15.3 Kg

- ± PostScript[®]3™ compatible.
- * Additional purchase required.
- ∞ Maximum capacity based on using 20 lb. paper.
- 1 Max. dpi from glass: max 600x600 dpi from ADF
- 2 Server 2003 / 2008 / 2012 network printing only
- 3 Requires connection to a wireless network. See www.brother.ca for details, availability, and mobile device compatibility.
- 4 Maximum number of printed pages per month can be used to compare designed durability between like Brother products. For maximum printer life, it is best to choose a printer with a duty cycle that far exceeds your print requirements.
- 5 The recommended range of monthly printed pages to achieve the best possible performance and printer life. Printers are intended to handle occasional usage beyond this range with little or no effect. Consistently printing above the recommended print volume, however, may adversely affect the print quality or life of the machine. It is always best to choose a printer with an appropriate recommended print volume to allow for any anticipated increase in printing needs.
- † Approximate toner cartridge yield in accordance with ISO/IEC 19752 (letter/A4).
- ^ Drum yield is approx., and may vary by type of use.
- ♦ Feature available using Brother ControlCenter

